

AUSTRALASIAN HFG STANDARD COMPONENTS

Room Layout Sheet

Room Name 2 Bed Room - Shared Ensuite

RLS Room Code 2 BR-ST-C

RDS Room Code 2 BR-ST

- AS

CG

COM/2

DDG

DHT

DP

DS

DSA

EC

FS

GPO/1

GPO/1EP

GPO/C

LS/B

LS/ENS

LS/R

LS/UDL

MA

NA

NC

O2

RCD

S

SBB

SK4

V1

V6
- ADJUSTABLE SHELF

CORNER GUARD

COMMUNICATION OUTLET - DOUBLE

DISPENSER - DISPOSABLE GLOVES

DISPENSER - HAND TOWEL

DOOR AND DOOR FRAME PROTECTION

DISPENSER - SOAP

DISPENSER - SOAP ANTISEPTIC

EMERGENCY CALL

FIXED SHELF

GENERAL PURPOSE OUTLET-SINGLE

EMERGENCY POWER - SINGLE

GENERAL PURPOSE OUTLET- CLEANER'S

LIGHT SWITCH - BED

LIGHT SWITCH - ENSUITE

LIGHT SWITCH - ROOM

LIGHT SWITCH - UP-DOWN LIGHT

MEDICAL AIR

NURSE ASSIST CALL

PATIENT NURSE CALL

OXYGEN

RESIDUAL CURRENT DEVICE

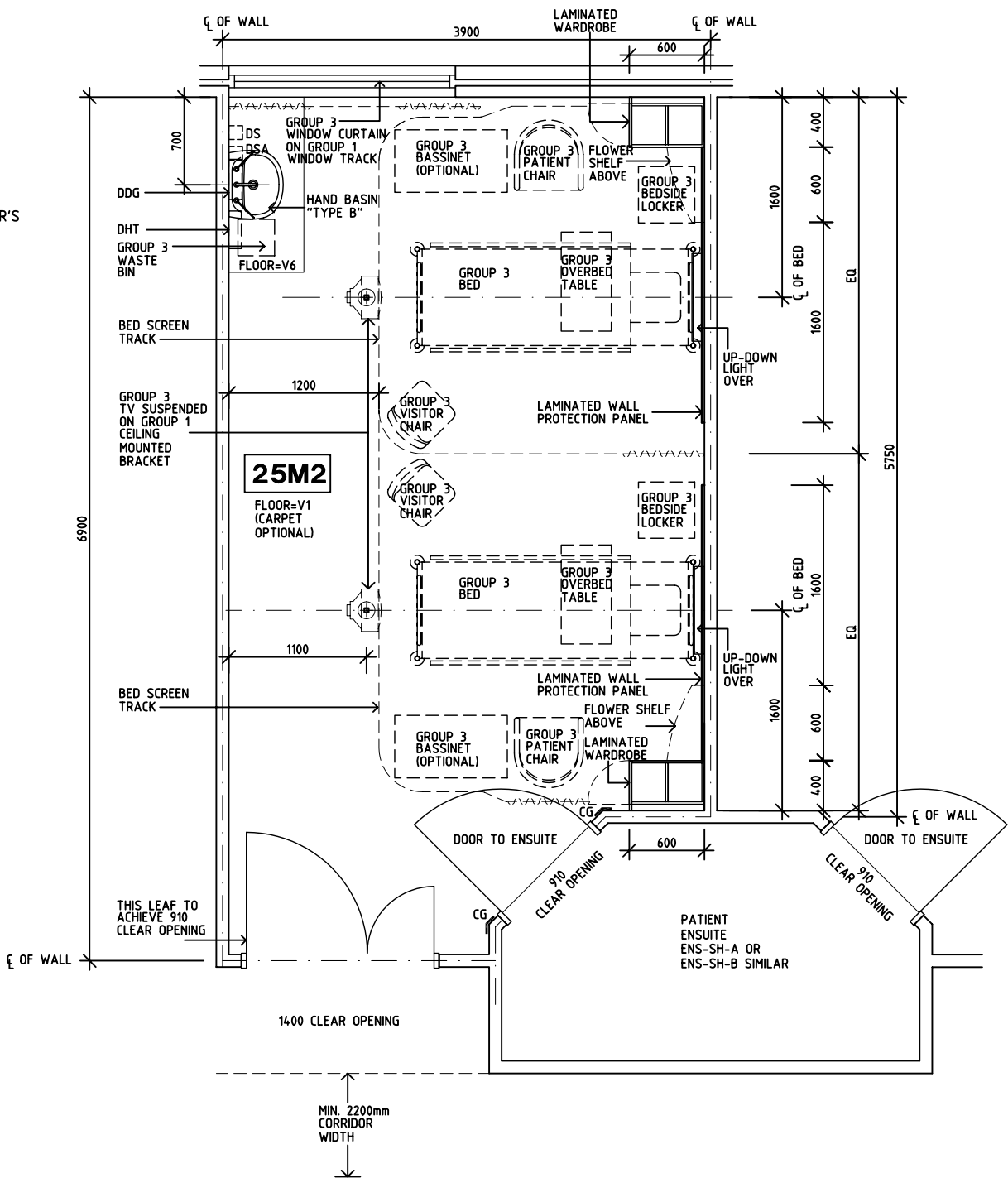
SUCTION

SUCTION BOTTLE BRACKET

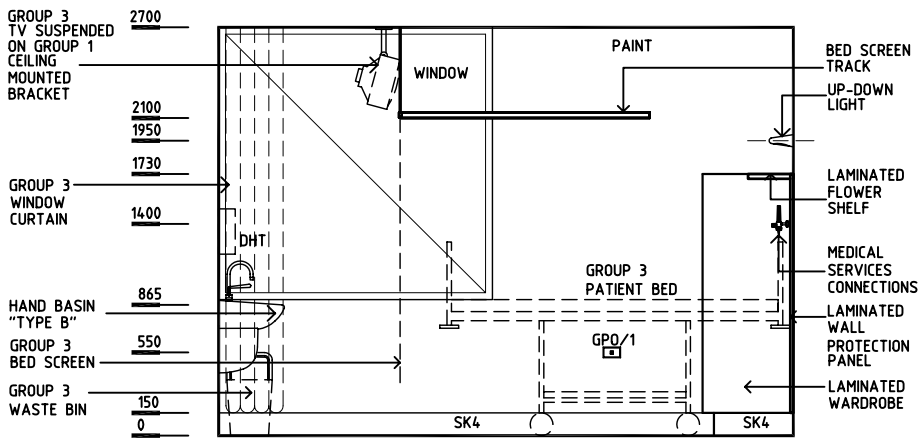
FLOOR VINYL COVED SKIRTING

VINYL FLOORING, STANDARD

VINYL FLOORING, TEXTURED



PLAN



ELEVATION 1

REV	DESCRIPTION	DATE	BY	REV	DESCRIPTION	DATE	BY	REV	DESCRIPTION	DATE	BY
1	FIRST ISSUE	10.10.03	CC								
2	GENERAL REVISIONS INCL NAME CHANGE	1.6.05	AL								
<div><div><div>Australasian</div><div>HFG</div></div><div><div>HCAMC</div><div>in association with</div><div>UNSW</div></div><div>HPI</div></div>								DESIGNED	APPROVED	SCALE(S)	ZONE(S)
								CC/AL	DB	150 in A3	
								CAD FILE NAME		PAPER DRAWING ID	
								2 BR-ST-C		2 BR-ST-Ca	

AUSTRALASIAN HFG STANDARD COMPONENTS

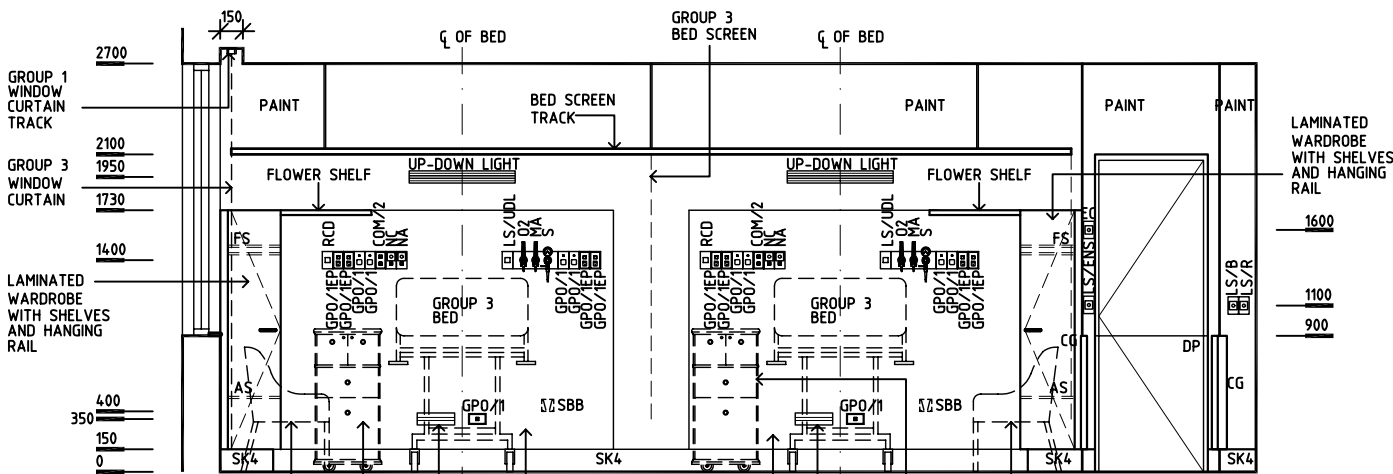
Room Layout Sheet

Room Name **2 Bed Room - Shared Ensuite**

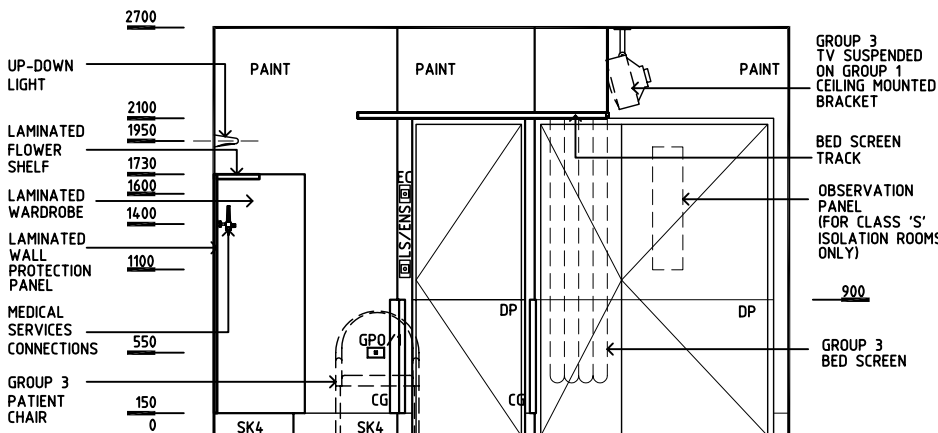
RLS Room Code 2 BR-ST-C

RDS Room Code 2 BR-ST

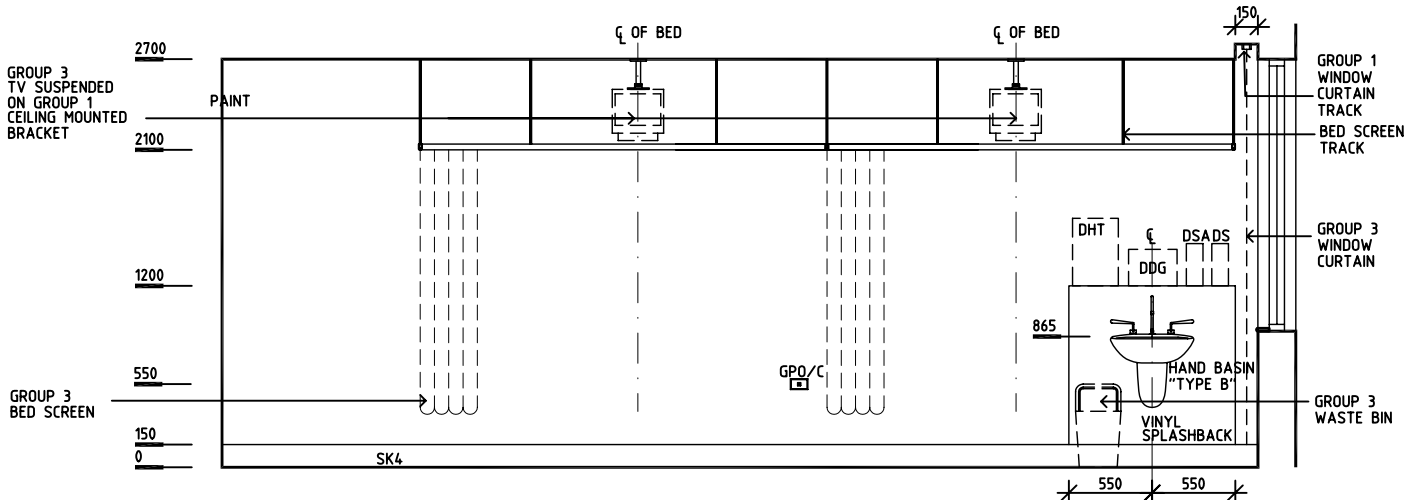
AS	ADJUSTABLE SHELF
CG	CORNER GUARD
COM/2	COMMUNICATION OUTLET - DOUBLE
DDG	DISPENSER - DISPOSABLE GLOVES
DHT	DISPENSER - HAND TOWEL
DP	DOOR AND DOOR FRAME PROTECTION
DS	DISPENSER - SOAP
DSA	DISPENSER - SOAP ANTISEPTIC
EC	EMERGENCY CALL
FS	FIXED SHELF
GPO/1	GENERAL PURPOSE OUTLET-SINGLE
GPO/1EP	EMERGENCY POWER - SINGLE
GPO/C	GENERAL PURPOSE OUTLET- CLEANER'S
LS/B	LIGHT SWITCH - BED
LS/ENS	LIGHT SWITCH - ENSUITE
LS/R	LIGHT SWITCH - ROOM
LS/UDL	LIGHT SWITCH - UP-DOWN LIGHT
MA	MEDICAL AIR
NA	NURSE ASSIST CALL
NC	PATIENT NURSE CALL
O2	OXYGEN
RCD	RESIDUAL CURRENT DEVICE
S	SUCTION
SBB	SUCTION BOTTLE BRACKET
SK4	FLOOR VINYL COVERED SKIRTING
V1	VINYL FLOORING, STANDARD
V6	VINYL FLOORING, TEXTURED



ELEVATION 2



ELEVATION 3



ELEVATION 4

[illegible]

Department	Standard Components	Room Tag: 1633
Room Name	Bay - Storage, 2m2	Room Code: BS-2
Net Room Area Briefed	2.0 M2	
No of Rooms	1	
Subtotal of Briefed Area	2.00 M2	
Hours of Operation	Available 24 Hours	
Occupancy	N/A	
Also covers these Rooms		
Description/ Special Requirements	<p>An open storage bay for holding of supplies in frequent use. Stock will be stored in open, heavy duty, adjustable shelving units.</p> <p>Special Design Requirements:</p> <ul style="list-style-type: none"> - The Bay should not impede corridor circulation 	
Amendment	<p>01.05.06, - First Draft</p> <p>15.12.08, - 2008 AUSHFG Review; Description amended, remarks added to FF & Services</p>	

Room Fabric and outline specifications

ID	Fabric	Material	Finish	Specification	Selection	Remarks
5010	Ceiling	Plasterboard	Paint, washable	Flush set, suspended		consistent with adjacent area
6030	Cornice	Aluminium	Powdercoat	24mm shadow angle		consistent with adjacent area
1000	Floor finish	Vinyl	Standard slip resistant	Seamless, coved		consistent with adjacent area
2000	Skirting	Vinyl	Prefinished	Floor vinyl coved, 150 mmH		consistent with adjacent area
3000	Wall finish	Paint	Acrylic, washable			
4031	Wall protection	Composite	Prefinished PVC	Corner guards to 1500 AFFL		Equal to 'Acrovyn'

Fittings and Furniture (FF)

ID	Description	Category	Group	Qty	Selection / Remarks
13660	Metal shelving: 900x400x2100	Furniture/ Fitting	3	3	heavy duty

Fixtures, Equipment and associated Services (FE)**Services**

ID	Description	Service Category	Qty	Selection / Remarks
5000	Airconditioning	HVAC		consistent with adjacent area
6000	General fluorescent	Lighting		consistent with adjacent area

AUSTRALASIAN HFG STANDARD COMPONENTS

Room Layout Sheet

Room Name Bay - Storage, 2m2

RLS Room Code BS-2
RDS Room Code BS-2

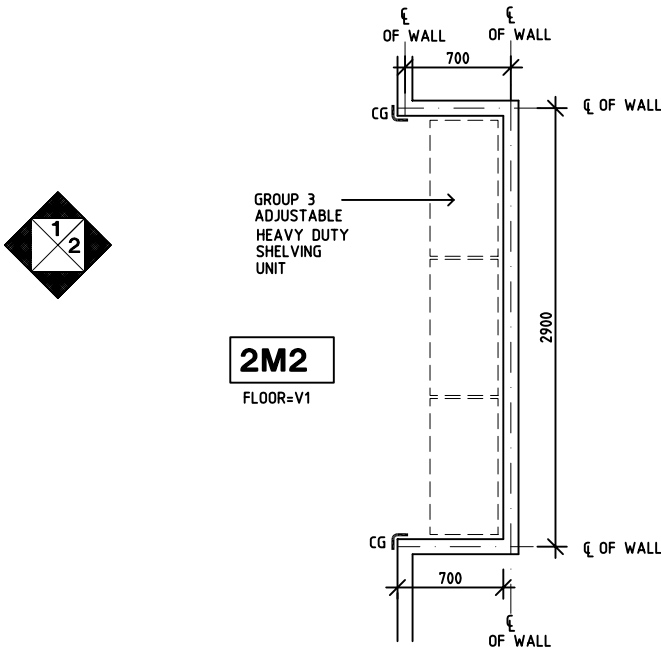
- CG

SK4

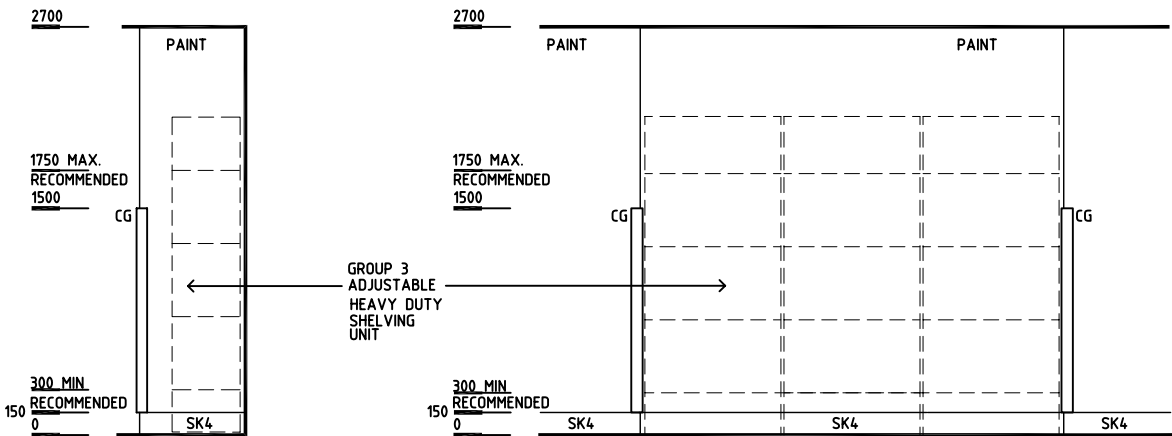
V1
- CORNER GUARD

FLOOR VINYL COVED SKIRTING

VINYL FLOORING, STANDARD



PLAN



ELEVATION 1

ELEVATION 2

REV	DESCRIPTION	DATE	BY	REV	DESCRIPTION	DATE	BY	REV	DESCRIPTION	DATE	BY
1	FIRST ISSUE	24.4.06	AL								
2	2008 AUS HFG REVIEW, GENERAL REVISION	10.12.08	AL								

Australasian	HFG	AHIA	in association with	UNSW	HPI	DESIGNED	APPROVED	SCALE(S)	ZONE(S)
						AL/ASD/JH	DB	1:50 in A3	
						CAD FILE NAME		PAPER DRAWING ID	
						BS-2		BS-2	

Department	Standard Components	Room Tag: 1634
Room Name	Bay - Storage, 3m2	Room Code: BS-3
Net Room Area Briefed	3.0 M2	
No of Rooms	1	
Subtotal of Briefed Area	3.00 M2	
Hours of Operation	Available 24 Hours	
Occupancy	N/A	
Also covers these Rooms		
Description/ Special Requirements	<p>An open storage bay for holding of supplies in frequent use. Stock will be stored in open, heavy duty, adjustable shelving units.</p> <p>Special Design Requirements:</p> <ul style="list-style-type: none"> - The Bay should not impede corridor circulation 	
Amendment	<p>01.05.06, - First Draft</p> <p>15.12.08, - 2008 AUSHFG Review; Description amended, remarks added to FF & Services</p>	

Room Fabric and outline specifications

ID	Fabric	Material	Finish	Specification	Selection	Remarks
5010	Ceiling	Plasterboard	Paint, washable	Flush set, suspended		consistent with adjacent area
6030	Cornice	Aluminium	Powdercoat	24mm shadow angle		consistent with adjacent area
1000	Floor finish	Vinyl	Standard slip resistant	Seamless, coved		consistent with adjacent area
2000	Skirting	Vinyl	Prefinished	Floor vinyl coved, 150 mmH		consistent with adjacent area
3000	Wall finish	Paint	Acrylic, washable			
4031	Wall protection	Composite	Prefinished PVC	Corner guards to 1500 AFFL		Equal to 'Acrovyn'

Fittings and Furniture (FF)

ID	Description	Category	Group	Qty	Selection / Remarks
13660	Metal shelving: 900x400x2100	Furniture/ Fitting	3	4	heavy duty

Fixtures, Equipment and associated Services (FE)**Services**

ID	Description	Service Category	Qty	Selection / Remarks
5000	Airconditioning	HVAC		consistent with adjacent area
6000	General fluorescent	Lighting		consistent with adjacent area

AUSTRALASIAN HFG STANDARD COMPONENTS

Room Layout Sheet

Room Name Bay - Storage, 3m2

RLS Room Code BS-3
RDS Room Code BS-3

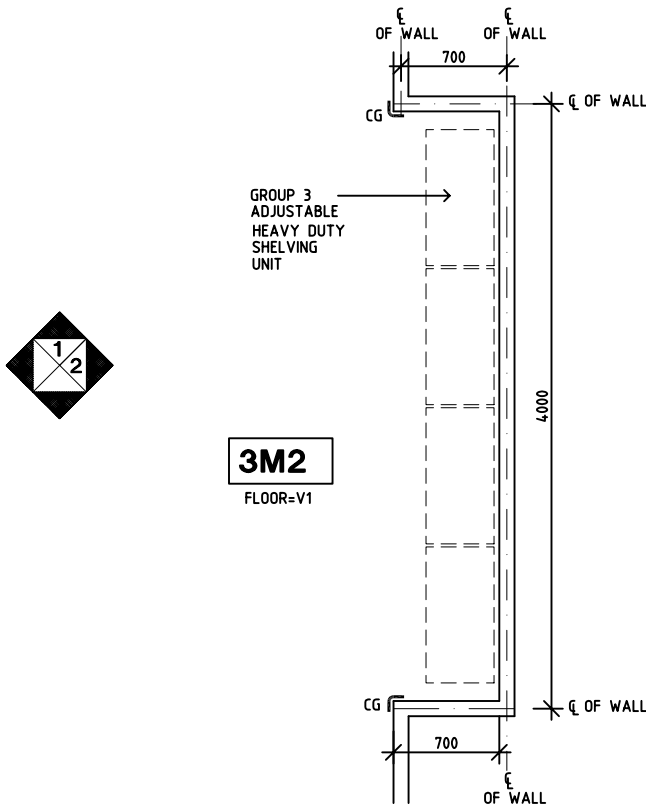
- CG

SK4

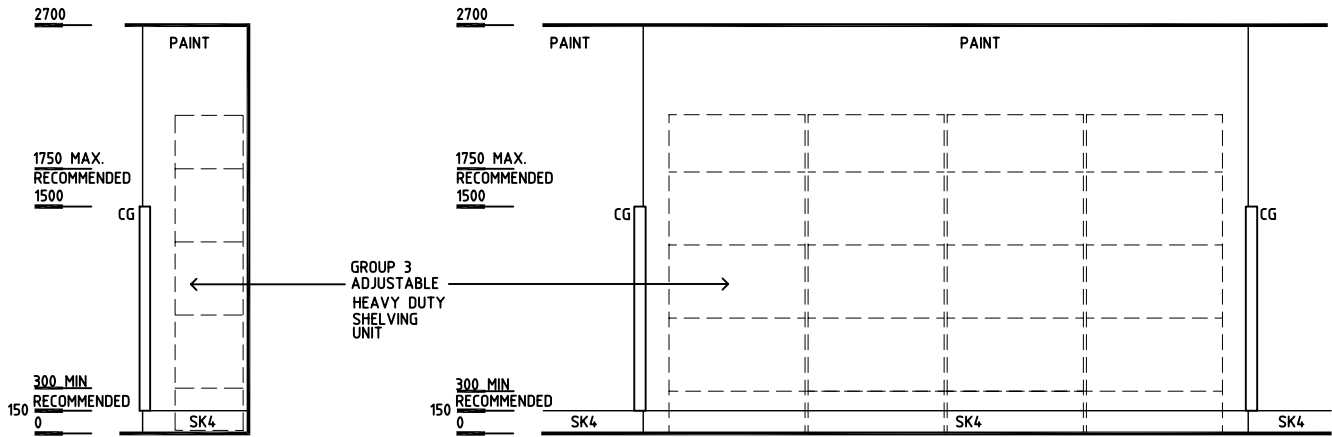
V1
- CORNER GUARD

FLOOR VINYL COVED SKIRTING

VINYL FLOORING, STANDARD



PLAN



ELEVATION 1

ELEVATION 2

REV	DESCRIPTION	DATE	BY	REV	DESCRIPTION	DATE	BY	REV	DESCRIPTION	DATE	BY
1	2008 AUS HFG REVIEW, FIRST ISSUE	10.12.08	AL								
<div><div>AustralasianHFG</div><div>AHIAin association withUNSW</div><div>HP</div></div>								DESIGNED	APPROVED	SCALE(S)	ZONE(S)
								AL/ADS/JH	DB	1:50 in A3	
								CAD FILE NAME	PAPER DRAWING ID		
								BS-3	BS-3		

Department	Standard Components	Room Tag: 1642
Room Name	Bay - Utility, 1.5m2	Room Code: BUT-1.5
Net Room Area Briefed	1.5 M2	
No of Rooms	1	
Subtotal of Briefed Area	1.50 M2	
Hours of Operation	24 Hours	
Occupancy	1	
Also covers these Rooms		
Description/ Special Requirements	The Utility Bay provides an area with a bench and sink for use as a preparation area. The bay may be located adjacent to patient treatment areas. The bay should be located in close proximity to a staff handwashing basin.	
Amendment	01.05.06, - First Draft 15.12.08, - 2008 AUSHFG Review, Fabric & Services amended	

Room Fabric and outline specifications

ID	Fabric	Material	Finish	Specification	Selection	Remarks
5010	Ceiling	Plasterboard	Paint, washable	Flush set, suspended		or consistent with adjacent area
6030	Cornice	Aluminium	Powdercoat	24mm shadow angle		or consistent with adjacent area
1000	Floor finish	Vinyl	Standard slip resistant	Seamless, coved		
2000	Skirting	Vinyl	Prefinished	Floor vinyl coved, 150 mmH		
3000	Wall finish	Paint	Acrylic, washable			
3052	Wall finish	Vinyl	Prefinished	Wall vinyl to 1500 AFFL		to whole bay
4031	Wall protection	Composite	Prefinished PVC	Corner guards to 1500 AFFL		Equal to 'Acrovyn'

Fittings and Furniture (FF)

ID	Description	Category	Group	Qty	Selection / Remarks
1010	Bench: stainless steel	Metalwork	1	1	with wet edge and inset sink, open under part
6154	Dispenser: paper/ hand towel	Furniture/ Fitting	2	1	to sink
6156	Dispenser: soap	Furniture/ Fitting	2	1	to sink
19820	Shelf: SS, under	Metalwork	1	1	under part bench
20000	Shelving unit: adjustable	Furniture/ Fitting	1		over bench
24100	Waste bin: paper, 20 Litre	Furniture/ Fitting	3	1	under bench

Fixtures, Equipment and associated Services (FE)

ID	Description	Group	Qty	Ele	Data	CdW	HtW	WmW	Tap	Dns	Gas	Selection / Remarks
47800	Sink, SS: single in bench	1	1	___	___	yes	opt	opt	yes	yes	___	warm water if located in a patient accessible area

Services

ID	Description	Service Category	Qty	Selection / Remarks
5000	Airconditioning	HVAC		consistent with adjacent area

Department	Standard Components	Room Tag: 1642
Room Name	Bay - Utility, 1.5m2	Room Code: BUT-1.5

ID	Description	Service Category	Qty	Selection / Remarks
6000	General fluorescent	Lighting		consistent with adjacent area

AUSTRALASIAN HFG STANDARD COMPONENTS

Room Layout Sheet

Room Name

Bay - Utility, 1.5m2

RLS Room Code BUT-1.5

RDS Room Code BUT-1.5

- AS

CG

CP

DHT

DS

FW

SK4

SS

V4
- ADJUSTABLE SHELF

CORNER GUARD

CHROME PLATED

DISPENSER - HAND TOWEL

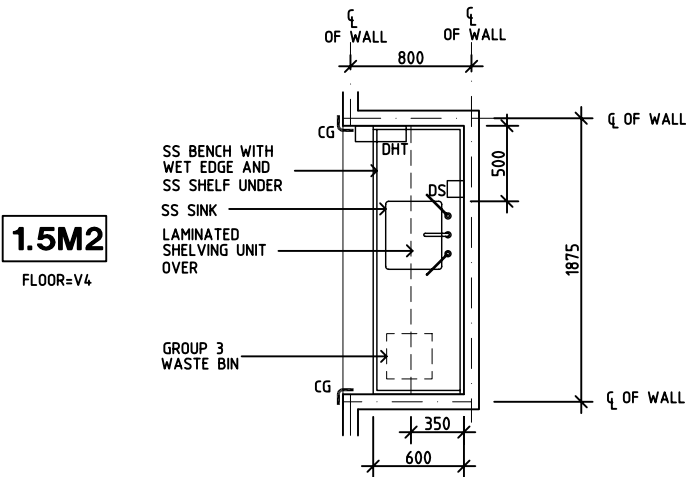
DISPENSER - SOAP

FLOOR WASTE

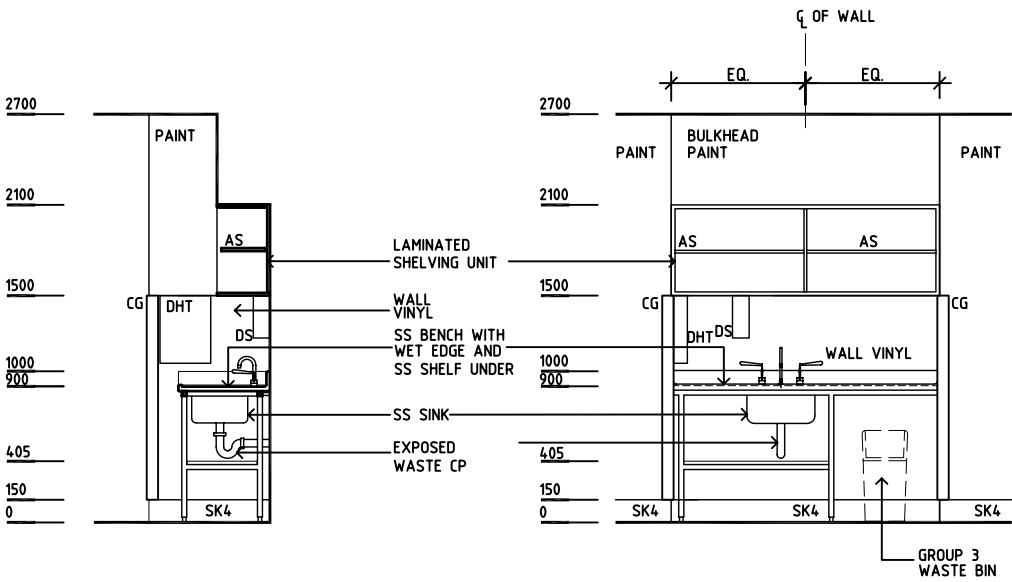
FLOOR VINYL COVERED SKIRTING

STAINLESS STEEL

VINYL FLOORING, SAFETY



PLAN



ELEVATION 1

ELEVATION 2

REV	DESCRIPTION	DATE	BY	REV	DESCRIPTION	DATE	BY	REV	DESCRIPTION	DATE	BY
1	FIRST ISSUE	24.04.06	AL								
2	2008 AUS HFG REVIEW, GENERAL REVISION	10.12.08	CX								

<div>AustralasianHFG</div>	<div>AHIAin association withUNSW</div>	<div>HPI</div>	DESIGNED	APPROVED	SCALE(S)	ZONE(S)
			AL/JH	DB	1:50 in A3	
			CAD FILE NAME		PAPER DRAWING ID	
BUT-1.5		BUT-1.5				

Australasian Standard Project

Room Data Sheets

Department	Standard Components	Room Tag: 2120
Room Name	Dark Room	Room Code: DARK
Area	6.0 M2	
No of Rooms	1	
Subtotal of Area		
Hours of Operation	Available 24 Hours	
Occupancy	1	
Also covers these Rooms		
Description/ Special Requirements	Dark room for processing and developing light sensitive radiographic film. Room requirements include good ventilation, light proof door and dark room lighting.	
Amendment	09.03.05, - First Draft	

Room Fabric and outline specifications

ID	Fabric	Material	Finish	Specification	Selection	Remarks
5010	Ceiling	Plasterboard	Paint, washable	Flush set, suspended		
6030	Cornice	Aluminium	Powdercoat	24mm shadow angle		
9001	Doors	Solid Core	Paint	Single leaf		light proof seals or revolving lightproof door
1000	Floor finish	Vinyl	Standard slip resistant	Seamless, coved		
2000	Skirting	Vinyl	Prefinished	Floor vinyl coved, 150 mmH		
3000	Wall finish	Paint	Acrylic, washable			
3060	Wall finish	Vinyl	Prefinished	Splashback		tiles also acceptable

Fittings and Furniture (FF)

ID	Description	Category	Group	Qty	Selection
1010	Bench: stainless steel	Metalwork	1	1	
6154	Dispenser: paper/ hand towel	Furniture/ Fitting	2	1	to sink
6156	Dispenser: soap	Furniture/ Fitting	2	1	to sink
19820	Shelf: SS, under	Metalwork	1	1	under bench
20010	Shelving unit	Furniture/ Fitting	3	1	over bench
24100	Waste bin: paper, 20 Litre	Furniture/ Fitting	3	1	

Fixtures, Equipment and associated Services (FE)

ID	Description	Group	Qty	Ele	Data	CdW	HtW	WmW	Tap	Dns	Gas	Selection
65000	IMG: processor, darkroom	3	1	yes	___	yes	___	___	___	yes	___	
65900	IMG: silver recovery unit	3	1	___	___	___	___	___	___	yes	___	
48910	Sink: 600x400x250D	1	1	___	___	yes	opt	opt	yes	yes	___	hot water

Services

ID	Description	Service Category	Qty	Remarks
5000	Airconditioning	HVAC		
5019	Exhaust	HVAC		

Australasian Standard Project
Room Data Sheets

Department	Standard Components	Room Tag: 2120
Room Name	Dark Room	Room Code: DARK

ID	Description	Service Category	Qty	Remarks
4033	Floor waste	Hydraulics	1	
6000	General fluorescent	Lighting		
6052	Special: dark room safe light	Lighting		
9001	GPO: Double	Power	1	
9060	Special: for equipment	Power	1	darkroom processor

AUSTRALASIAN HFG STANDARD COMPONENTS

Room Layout Sheet

Room Name Dark Room

RLS Room Code DARK
RDS Room Code DARK

- DHT

DS

FS

FW

GP0/2

GP0/S

LS

LS-DARK

SK4

SS

V1
- DISPENSER - HAND TOWEL

DISPENSER- SOAP

FIXED SHELF

FLOOR WASTE

GENERAL PURPOSE OUTLET - DOUBLE

SPECIAL POWER OUTLET - SINGLE

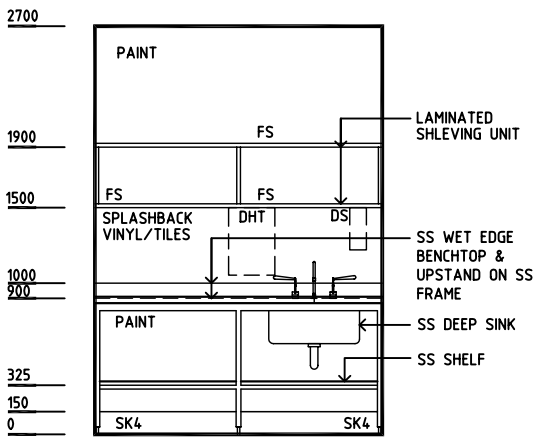
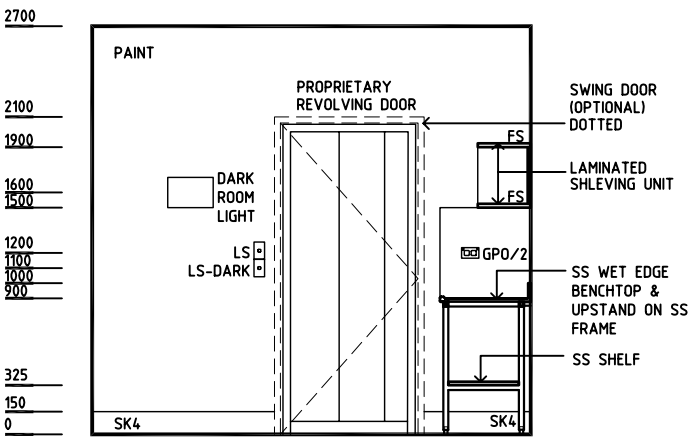
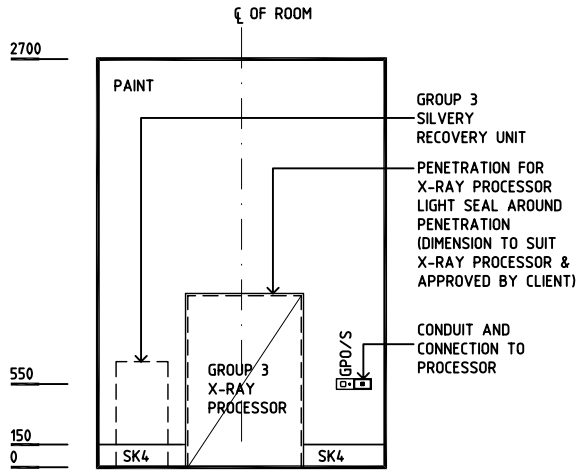
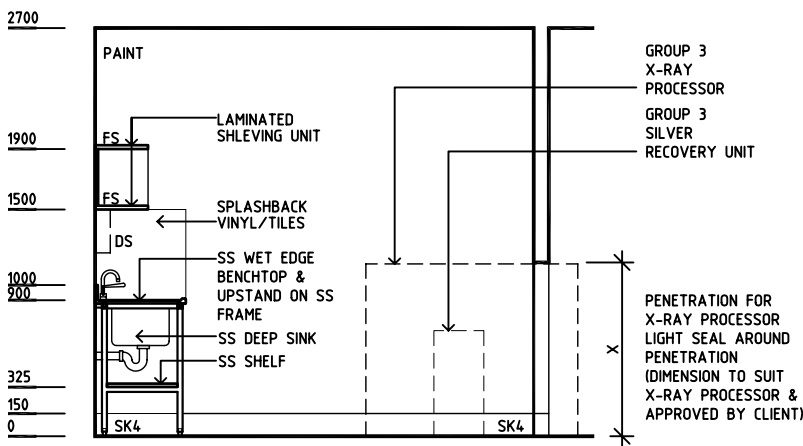
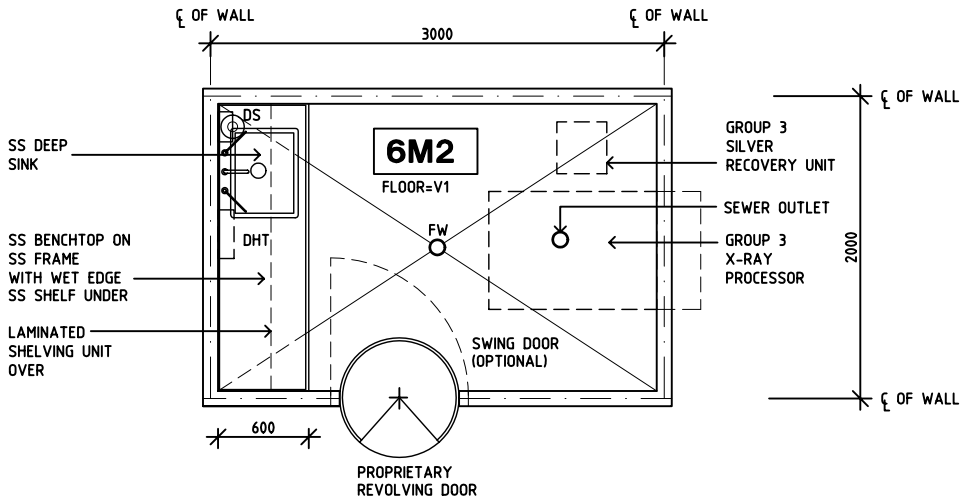
LIGHT SWITCH

LIGHT SWITCH - DARK LIGHT

FLOOR VINYL COVED SKIRTING

STAINLESS STEEL

VINYL FLOORING, STANDARD



REV	DESCRIPTION	DATE	BY	REV	DESCRIPTION	DATE	BY	REV	DESCRIPTION	DATE	BY
1	FIRST ISSUE	26.4.05	HS								
<div><div>AustralasianHFG</div><div>HCAMC in association with UNSW</div><div>HPI</div></div>								DESIGNED	APPROVED	SCALE(S)	ZONE(S)
								HS	DB	1:50 in A3	
								CAD FILE NAME	PAPER DRAWING ID		
								DARK	DARK		

Department	Standard Components	Room Tag: 2810
Room Name	Lounge - Patient, 15m2	Room Code: LNPT-15
Net Room Area Briefed	15.0 M2	
No of Rooms	1	
Subtotal of Briefed Area	15.00 M2	
Hours of Operation	24 Hours	
Occupancy	Up to 10 patients/ visitors; 1-2 staff intermittently	
Also covers these Rooms		
Description/ Special Requirements	<p>The Patient Lounge provides a change of environment away from clinical areas for patients and visitors. It is an area where family groups can visit and patients can socialise. An external outlook is essential.</p> <p>Access for patient lifters and beds are required</p> <p>Acoustics: Sound attenuation level - Medium; Acoustic privacy required.</p> <p>Body Protected electrical area</p>	
Amendment	<p>10.10.03, - First Draft</p> <p>08.02.05, - BOB User review, GPOs modified</p> <p>15.12.08, - 2008 AUSHFG Review; fabric amended, furnishings amended, description amended, services amended</p>	

Room Fabric and outline specifications

ID	Fabric	Material	Finish	Specification	Selection	Remarks
5060	Ceiling	Acoustic	Prefinished	Drop-in tiles, 600x1200		
8010	Door protection	Composite	Prefinished PVC	Protection plate to 900 AFFL		Equal to Acrovyn
8040	Door protection	Composite	Prefinished PVC	To door frame		Equal to Acrovyn
9115	Doors	Solid Core/ Glass	Paint	1 1/2 leaf, half glazed		1400mm clear opening
1000	Floor finish	Vinyl	Standard slip resistant	Seamless, coved		Default = Vinyl: carpet also acceptable
7035	Observation	Alum/ Glass	Powdercoat	Internal window		optional
2000	Skirting	Vinyl	Prefinished	Floor vinyl coved, 150 mmH		Default = coved skirting: feather edge acceptable if carpet used.
3000	Wall finish	Paint	Acrylic, washable			
7001	Windows					essential

Fittings and Furniture (FF)

ID	Description	Category	Group	Qty	Selection / Remarks
350	Artwork	Furniture/ Fitting	3	2	optional
23410	Bracket: television, wall mount	Metalwork	1	1	optional
2150	Chair: patient	Furniture/ Fitting	3	6	may require adjustable height
2655	Chair: visitor	Furniture/ Fitting	3	4	
4900	Curtain track: window	Metalwork	1	1	
5410	Curtain: window, drapes	Furniture/ Fitting	3	1	or blinds
22800	Table: low	Furniture/ Fitting	3	2	

Department **Standard Components**
 Room Name **Lounge - Patient, 15m2**

Room Tag: **2810**
 Room Code: **LNPT-15**

Fixtures, Equipment and associated Services (FE)

ID	Description	Group	Qty	Ele	Data	CdW	HtW	WmW	Tap	Dns	Gas	Selection / Remarks
54510	Telephone: handset, standard	3	1	___	yes	___	___	___	___	___	___	optional, on table
54580	Television: 54 cm	3	1	yes	___	___	___	___	___	___	___	on bracket, optional- flat screen

Services

ID	Description	Service Category	Qty	Selection / Remarks
1090	TV: MATV	Communications	1	optional
1006	Voice / Data outlet: double	Communications	1	1 outlet for telephone
5000	Airconditioning	HVAC		
6000	General fluorescent	Lighting		
6046	Indirect lighting	Lighting		optional
8080	Emergency call	Nurse Call	1	+ indicator button & light
8005	Patient call handset	Nurse Call	1	call button on the handset
8000	Patient/ Staff call	Nurse Call	1	+ indicator button & light
8010	Staff/ Nurse assist call	Nurse Call	1	+ indicator button & light
9040	Body protected	Power		
9015	GPO: Cleaner	Power	1	as required
9000	GPO: Single	Power	6	
9060	GPO: Special: for equipment	Power	1	TV, optional

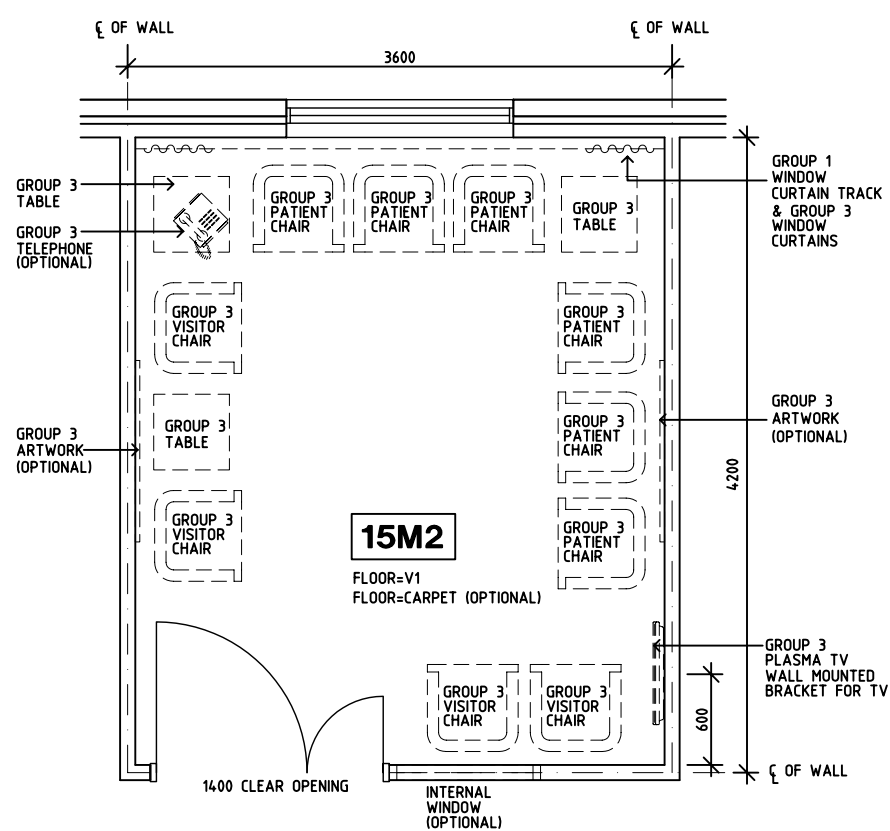
Room Layout Sheet

Room Name	Lounge - Patient, 15m2
-----------	------------------------

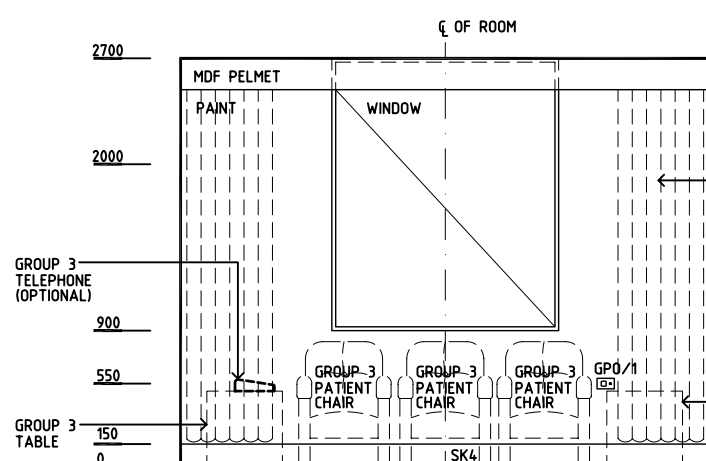
RLS Room Code LNPT-15

RDS Room Code LNPT-15

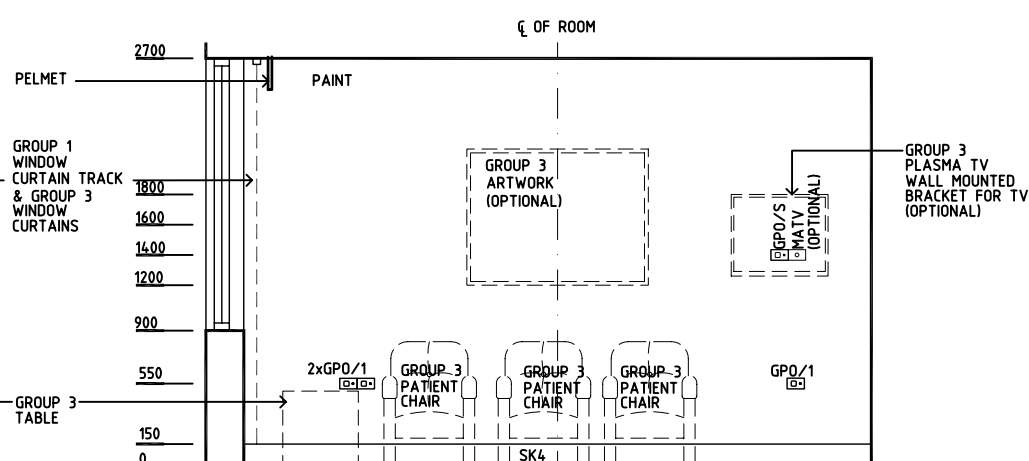
COM/2	COMMUNICATIONS OUTLET - DOUBLE
DP	DOOR AND DOOR FRAME PROTECTION
EC	EMERGENCY CALL
GPO/1	GENERAL PURPOSE OUTLET - SINGLE
GPO/C	GENERAL PURPOSE OUTLET - CLEANER
GPO/S	GENERAL PURPOSE OUTLET - SPECIAL
LS	LIGHT SWITCH
MATV	TV CONNECTION
NA	NURSE ASSIST CALL
NC	PATIENT NURSE CALL
OP	OBSERVATION PANEL
RCD	RESIDUAL CURRENT DEVICE
SK4	FLOOR VINYL COVED SKIRTING
V1	VINYL FLOORING. STANDARD



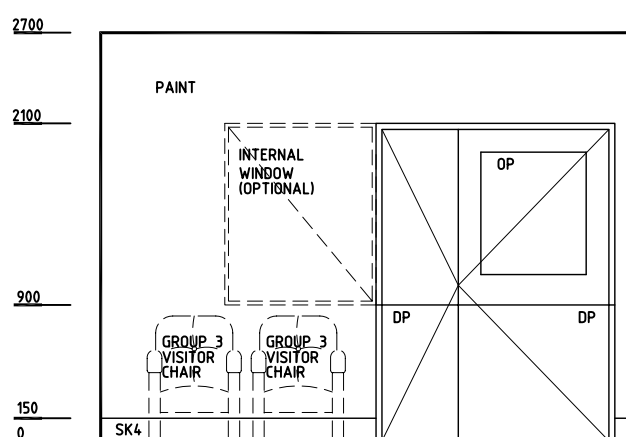
PLAN



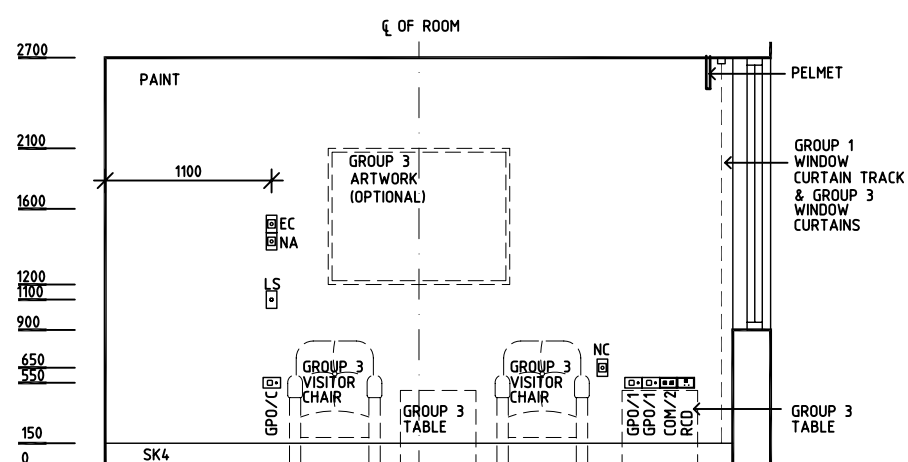
ELEVATION 1



ELEVATION 2



ELEVATION 3



ELEVATION 4

   	DESIGNED	APPROVED	SCALE(S)	ZONE(S)
	CC/BJ/AL	DB	1:50 in A3	
	CAD FILE NAME LNPT-15		PAPER DRAWING ID LNPT-15	

This document is for advisory purpose only

Australasian Standard Project

Room Data Sheets

Department	Standard Components	Room Tag: 2570
Room Name	Patient Bay - Acute Treatment, 10 m2	Room Code: PBTR-A10
Area	10.0 M2	
No of Rooms	1	
Subtotal of Area	10.0 M2	
Minimum Dimension	0.0 M2	
Hours of Operation	24 Hours	
Occupancy	1 patient; 1 - 2 staff	
Also covers these Rooms		
Description/ Special Requirements	<p>The Patient Bed Bay Acute Treatment may be used for assessment and treatment of patients with acute conditions and will be located within the Emergency Unit. The Bay may have partition side walls; glazing is recommended. The Patient Bay will have close access to a staff handwashing basin.</p> <p>Body Protected electrical area</p>	
Amendment	<p>20.11.03, - First Draft</p> <p>01.03.05, - BOB User review, shelf & N20 added</p>	

Room Fabric and outline specifications

ID	Fabric	Material	Finish	Specification	Selection	Remarks
5010	Ceiling	Plasterboard	Paint, washable	Flush set, suspended		
6030	Cornice	Aluminium	Powdercoat	24mm shadow angle		
1000	Floor finish	Vinyl	Standard slip resistant	Seamless, coved		
7055	Observation	Alum/ glass	Anodised	Internal window, double glazed		to partition walls, if provided
2000	Skirting	Vinyl	Prefinished	Floor vinyl coved, 150 mmH		
3000	Wall finish	Paint	Acrylic, washable			
3092	Wall protection	MDF	Laminate	Bed protection wall panel		
4020	Wall protection	Composite	Prefinished PVC	Crash rail at 900 AFFL		As required, Equal to 'Acrovyn'
4031	Wall protection	Composite	Prefinished PVC	Corner guards to 1500 AFFL		As required, Equal to 'Acrovyn'

Fittings and Furniture (FF)

ID	Description	Category	Group	Qty	Selection
150	Air flowmeter	Furniture/ Fitting	3	1	
700	Bed: inpatient, manual	Furniture/ Fitting	3	1	
1252	Blind: Venetian integral	Furniture/ Fitting	1	2	to internal windows if provided
15100	Bracket: monitor	Furniture/ Fitting	3	1	optional, may have ergonomic arm
1470	Bracket: sharps	Furniture/ Fitting	2	1	
1465	Bracket: suction bottle	Furniture/ Fitting	2	2	
2650	Chair: visitor, patient	Furniture/ Fitting	3	1	
4600	Curtain track: bed screen	Metalwork	1	1	
5000	Curtain: bed screen	Furniture/ Fitting	3	1	

Australasian Standard Project

Room Data Sheets

Department

Standard Components

Room Tag: 2570

Room Name

Patient Bay - Acute Treatment, 10 m2

Room Code: PBTR-A10

ID	Description	Category	Group	Qty	Selection
6152	Dispenser: disposable glove	Furniture/ Fitting	2	1	
10700	IV hanger for ceiling track	Metalwork	1	1	
11200	IV track: ceiling mounted	Metalwork	1	1	
12900	Louvred panel: for storage-bins	Metalwork	1	2	optional, for storage
16250	Oxygen flowmeter	Furniture/ Fitting	3	2	
19700	Sharps bin	Furniture/ Fitting	3	1	
19800	Shelf: laminate	Furniture/ Fitting	1	1	above services panel, optional
21755	Storage bins	Furniture/ Fitting	3	10	optional, for storage on louvred panel
21950	Suction adapter	Furniture/ Fitting	3	2	
22000	Suction bottle	Furniture/ Fitting	3	2	
23952	Trolley: small	Furniture/ Fitting	1	1	

Fixtures, Equipment and associated Services (FE)

ID	Description	Group	Qty	Ele	Data	CdW	HtW	WmW	Tap	Dns	Gas	Selection
15900	Diagnostic set: wall mounted	3	1	yes	—	—	—	—	—	—	—	optional
32150	Light: procedure, ceiling		1	yes	—	—	—	—	—	—	—	
36050	Monitor: cardiac	3	1	yes	opt	—	—	—	—	—	—	optional

Services

ID	Description	Service Category	Qty	Remarks
1120	Monitor connection facilities and cabling	Communications	1	optional, if networked monitoring required
1006	Voice / Data outlet: double	Communications	1	services panel, 1 outlet for telephone
5000	Airconditioning	HVAC		
6001	General: colour corrected	Lighting		
7020	Medical Air (MA)	Medical Gases	1	services panel
7010	Nitrous Oxide (N2O)	Medical Gases	1	services panel, optional
7000	Oxygen (O2)	Medical Gases	2	services panel
7070	Scavenge	Medical Gases	1	services panel, if N2O provided
7040	Suction	Medical Gases	2	services panel
8080	Emergency call	Nurse Call	1	+ indicator button & light
8005	Patient call handset	Nurse Call	1	call button on the handset
8000	Patient/ Staff call	Nurse Call	1	+ indicator button & light
8010	Staff/ Nurse assist call	Nurse Call	1	+ indicator button & light
9040	Body protected	Power		
9010	GPO: Emergency power, single	Power	4	services panel, 1 for monitor, if required
9000	GPO: Single	Power	3	services panel
9000	GPO: Single	Power	1	for electric bed
9060	Special: for equipment	Power	1	procedure light
11000	Wall panel	Services Panels	1	

AUSTRALASIAN HFG STANDARD COMPONENTS

Room Layout Sheet

Room Name Patient Bay - Acute Treatment, 10m2

RLS Room Code PBTR-A10
RDS Room Code PBTR-A10

- COM/2

CG

CR

DDG

EC

FG

GPO/1

GPO/1 EP

MA

NC

NA

N20

LS

O2

PL

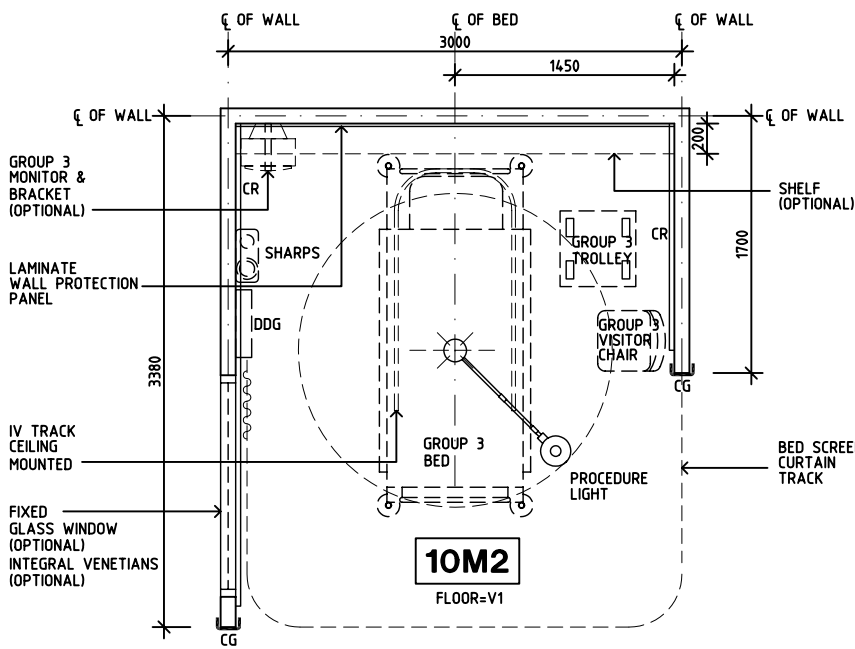
RCD

S

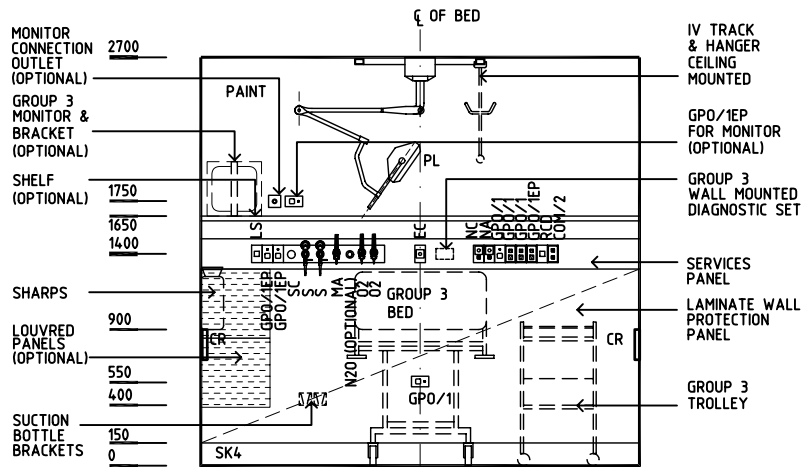
SC

SK4

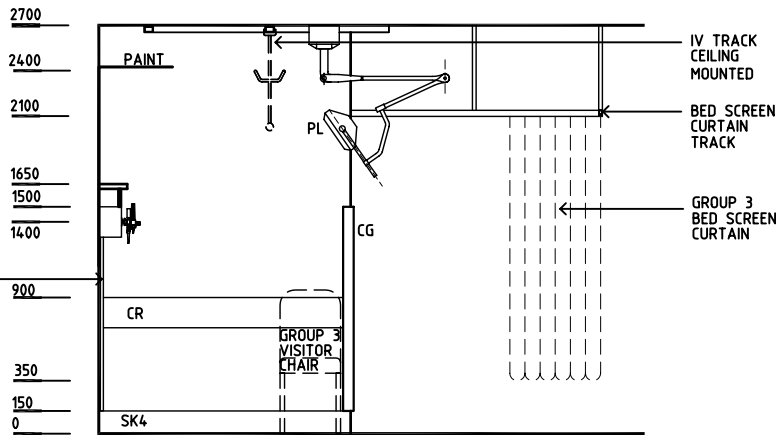
V1
- COMMUNICATION OUTLET - DOUBLE
CORNER GUARD
CRASH RAIL
DISPENSER - DISPOSABLE GLOVE
EMERGENCY CALL
FIXED GLAZING
GENERAL PURPOSE OUTLET - SINGLE
EMERGENCY POWE - SINGLE
MEDICAL AIR
PATIENT/NURSE CALL
NURSE ASSIST CALL
NITROUS OXIDE
LIGHT SWITCH
OXYGEN
PROCEDURE LIGHT
RESIDUAL CURRENT DEVICE
SUCTION
SCAVENGE
FLOOR VINYL COVED SKIRTING
VINYL FLOORING, STANDARD



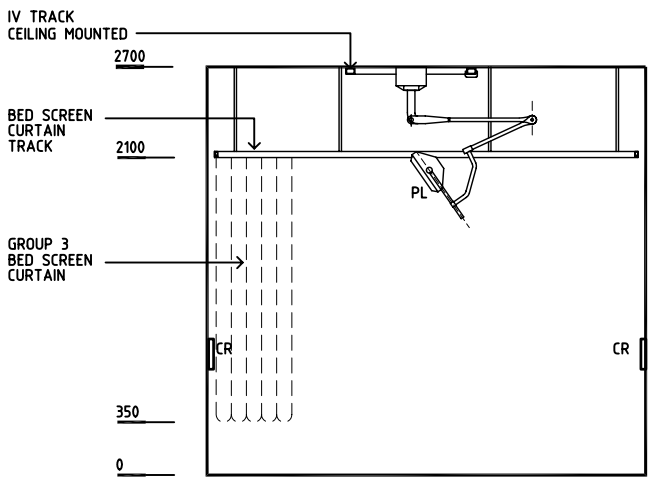
PLAN



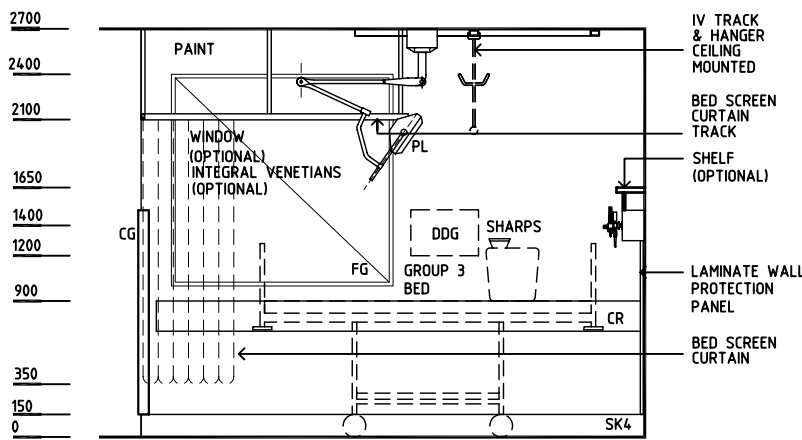
ELEVATION 1



ELEVATION 2



ELEVATION 3



ELEVATION 4

REV	DESCRIPTION	DATE	BY	REV	DESCRIPTION	DATE	BY	REV	DESCRIPTION	DATE	BY
1	FIRST ISSUE	20.11.03	AL								
2	ROOM NAME CHANGED	10.3.05	JMH								
3	GENERAL REVISIONS	20.5.05	AL								

Australasian

HFG

HCAMC

in association with

UNSW

HPI

DESIGNED	APPROVED	SCALE(S)	ZONE(S)
AL	DB	1:50 in A3	
CAD FILE NAME	PAPER DRAWING ID		
PBTR-A10	PBTR-A10		

Department	Standard Components	Room Tag: 3455
Room Name	Patient Bay - Holding, Enclosed, 12m2	Room Code: PBTR-H-E-12
Net Room Area Briefed	12.0 M2	
No of Rooms	1	
Subtotal of Briefed Area	12.00 M2	
Hours of Operation	24 Hours	
Occupancy	1 patient; 1 - 2 staff intermittently	
Also covers these Rooms		
Description/ Special Requirements	An enclosed Patient Bed Bay used for holding of patients prior to procedures, observation of patients following procedures or for assessment and treatment of patients with non acute conditions. The Enclosed Patient Bay may be used for isolation of patients and will contain a staff handwashing basin.	
Amendment	Body Protected electrical area 10.03.09, - 2009 AUSHFG review; new room	

Room Fabric and outline specifications

ID	Fabric	Material	Finish	Specification	Selection	Remarks
5010	Ceiling	Plasterboard	Paint, washable	Flush set, suspended		
6030	Cornice	Aluminium	Powdercoat	24mm shadow angle		
9120	Doors	Alum/ Safety glass	Powdercoat/ paint	1 1/2 leaf, fully glazed		1400mm clear opening
1000	Floor finish	Vinyl	Standard slip resistant	Seamless, coved		
7035	Observation	Alum/ Glass	Powdercoat	Internal window		optional to side walls
2000	Skirting	Vinyl	Prefinished	Floor vinyl coved, 150 mmH		
3000	Wall finish	Paint	Acrylic, washable			
3060	Wall finish	Vinyl	Prefinished	Splashback		to basin; default = vinyl, tiles also acceptable
3092	Wall protection	MDF	Laminate	Bed protection wall panel		

Fittings and Furniture (FF)

ID	Description	Category	Group	Qty	Selection / Remarks
150	Air flowmeter	Furniture/ Fitting	3	1	optional
1465	Bracket: suction bottle	Furniture/ Fitting	2	1	
2650	Chair: visitor, patient	Furniture/ Fitting	3	1	optional
4600	Curtain track: bed screen	Metalwork	1	1	
5000	Curtain: bed screen	Furniture/ Fitting	3	1	
6152	Dispenser: disposable glove	Furniture/ Fitting	2	1	
6154	Dispenser: paper/ hand towel	Furniture/ Fitting	2	1	to basin
6156	Dispenser: soap	Furniture/ Fitting	2	1	to basin
6158	Dispenser: soap antiseptic	Furniture/ Fitting	2	1	to basin

Department

Standard Components

Room Tag: 3455

Room Name

Patient Bay - Holding, Enclosed, 12m2

Room Code: PBTR-H-E-12

ID	Description	Category	Group	Qty	Selection / Remarks
12900	Louvred panel: for storage-bins	Metalwork	1	1	optional
16250	Oxygen flowmeter	Furniture/ Fitting	3	1	
21755	Storage bins	Furniture/ Fitting	3	3	on louvred panel, optional
21950	Suction adapter	Furniture/ Fitting	3	1	
22000	Suction bottle	Furniture/ Fitting	3	1	
24108	Waste bin: paper, 10 Litre	Furniture/ Fitting	3	1	to basin

Fixtures, Equipment and associated Services (FE)

ID	Description	Group	Qty	Ele	Data	CdW	HtW	WmW	Tap	Dns	Gas	Selection / Remarks
2800	Basin: handwash, Type B	1	1	___	___	yes	___	yes	yes	yes	___	
3700	Bed: inpatient, electric	3		yes	___	___	___	___	___	___	___	spatial provision required
31700	Light: examination, ceiling	1	1	yes	___	___	___	___	___	___	___	

Services

ID	Description	Service Category	Qty	Selection / Remarks
1006	Voice / Data outlet: double	Communications	1	
5000	Airconditioning	HVAC		
6001	General: colour corrected	Lighting		
6030	Special: downlights	Lighting		over bed/ trolley
7020	Medical Air (MA)	Medical Gases	1	
7000	Oxygen (O2)	Medical Gases	1	
7040	Suction	Medical Gases	1	
8080	Emergency call	Nurse Call	1	+ indicator button & light
8005	Patient call handset	Nurse Call	1	call button on the handset
8000	Patient/ Staff call	Nurse Call	1	+ indicator button & light
8010	Staff/ Nurse assist call	Nurse Call	1	+ indicator button & light
9040	Body protected	Power		
9015	GPO: Cleaner	Power	1	as required
9010	GPO: Emergency power, single	Power	3	to bedhead
9000	GPO: Single	Power	3	to bedhead
9000	GPO: Single	Power	1	to bedhead, low level for bed
11000	Wall panel	Services Panels	1	flush mounted

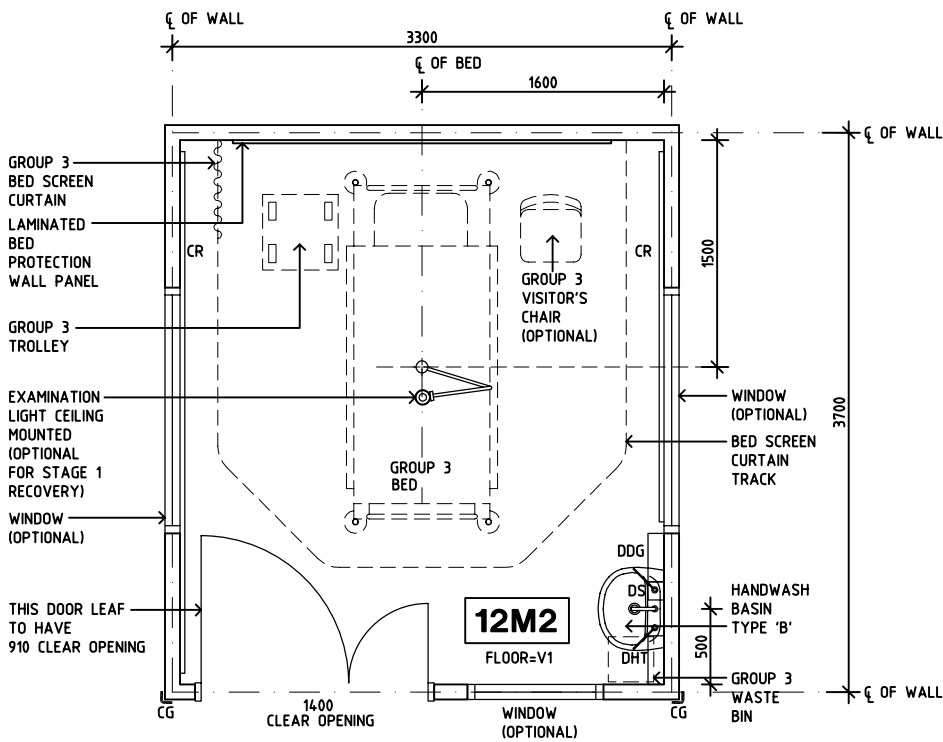
AUSTRALASIAN HFG STANDARD COMPONENTS

Room Layout Sheet

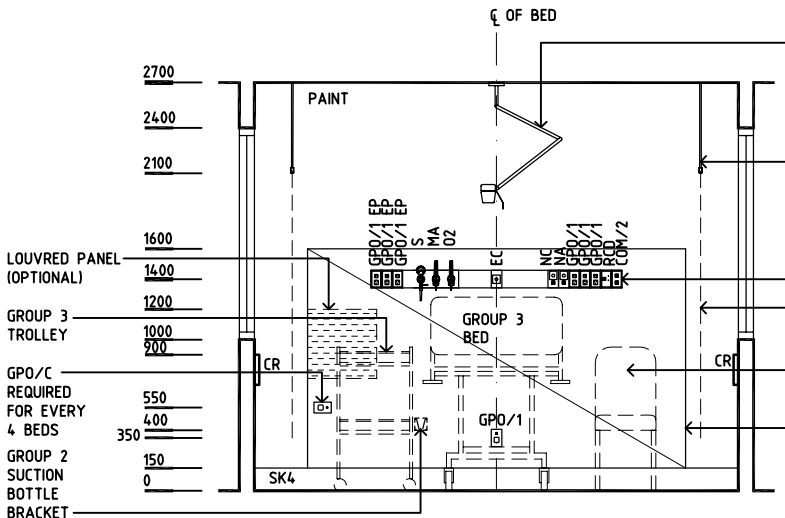
Room Name Patient Bay - Holding, Enclosed, 12m2

RLS Room Code PBTR-H-E-12
RDS Room Code PBTR-H-E-12

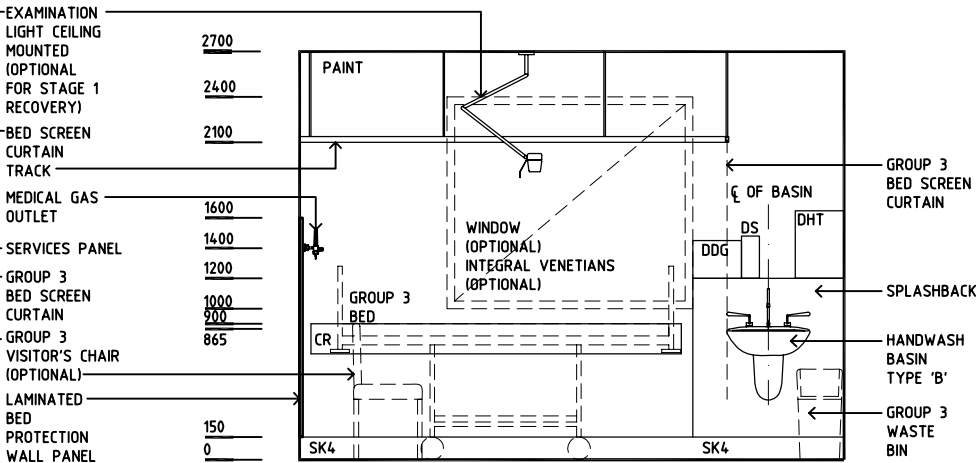
- COM/2
CG
CR
DDG
DHT
DS
EC
FG
GPO/1
GPO/1 EP
GPO/C
LS
MA
NC
NA
O2
RCD
S
SK4
V1
- COMMUNICATION OUTLET - DOUBLE
CORNER GUARD
CRASH RAIL
DISPENSER - DISPOSABLE GLOVE
DISPENSER - HAND TOWEL
DISPENSER - SOAP
EMERGENCY CALL
FIXED GLASS
GENERAL PURPOSE OUTLET - SINGLE
EMERGENCY POWER OUTLET - SINGLE
GENERAL PURPOSE OUTLET - CLEANER
LIGHT SWITCH
MEDICAL AIR
PATIENT/NURSE CALL
NURSE ASSIST CALL
OXYGEN
RESIDUAL CURRENT DEVICE
SUCTION
FLOOR VINYL COVED SKIRTING
VINYL FLOORING, STANDARD



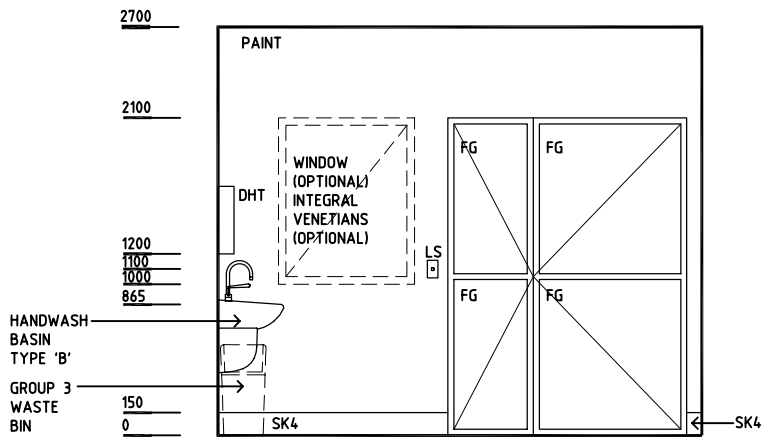
PLAN



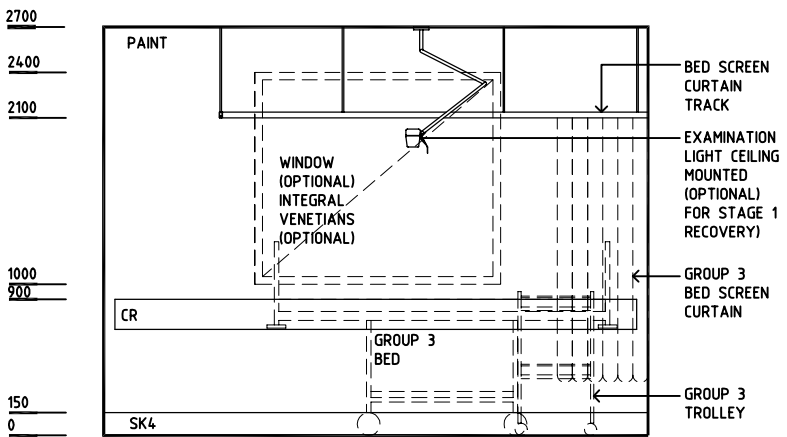
ELEVATION 1





ELEVATION 2



ELEVATION 3



ELEVATION 4

REV	DESCRIPTION	DATE	BY	REV	DESCRIPTION	DATE	BY	REV	DESCRIPTION	DATE	BY
1	FIRST ISSUE	10.03.09	KC								
<div><div>Australasian</div><div><div>AHIA</div><div>in association with</div><div>UNSW</div></div><div></div></div>								DESIGNED	APPROVED	SCALE(S)	ZONE(S)
								AL/KC	DB	150 in A3	
								CAD FILE NAME PBTR-H-E-12		PAPER DRAWING ID PBTR-H-E-12	

Australasian HFG

AHIA in association with
UNSW



Department	Standard Components	Room Tag: 3591
Room Name	Play Area - Paediatric, 15m2	Room Code: PLAP-15
Net Room Area Briefed	15.0 M2	
No of Rooms	1	
Subtotal of Briefed Area	15.00 M2	
Hours of Operation	Available 24 Hours	
Occupancy	Up to 6	
Also covers these Rooms		
Description/ Special Requirements	An area where children may play while parents wait or are attended to by staff, associated with a Waiting area or located within a Paediatric Unit. The Play Area should allow access for prams. Public toilets and baby change facilities should be located nearby. The Play Area should be designed to keep children in the area, minimise noise transfer and be observable by parents / staff from the adjacent area.	
Amendment	11.04.05, - First Draft 10.03.09, - 2009 AUSHFG Review; description modified; fabric remarks amended	

Room Fabric and outline specifications

ID	Fabric	Material	Finish	Specification	Selection	Remarks
5060	Ceiling	Acoustic	Prefinished	Drop-in tiles, 600x1200		
6030	Cornice	Aluminium	Powdercoat	24mm shadow angle		
1149	Floor finish	Carpet	90/10 Wool/ Nylon	Broadloom, 48 oz.		default = carpet; cushioned vinyl also acceptable
2010	Skirting	Vinyl	Prefinished	Feather edged, 150 mmH		or coved vinyl skirting
3000	Wall finish	Paint	Acrylic, washable			
7001	Windows					desirable

Fittings and Furniture (FF)

ID	Description	Category	Group	Qty	Selection / Remarks
1130	Blackboard	Metalwork	2	1	child height, optional
1250	Blind: Venetian	Metalwork	3	1	to external window if provided, no dangling cords
1600	Chair: child	Furniture/ Fitting	3	2	
2655	Chair: visitor	Furniture/ Fitting	3	2	
19506	Security screen: child proof	Furniture/ Fitting	1	1	with gate
22700	Table: child	Furniture/ Fitting	3	1	
22800	Table: low	Furniture/ Fitting	3	1	
23800	Toy box & toys	Furniture/ Fitting	3	1	

Fixtures, Equipment and associated Services (FE)

Department	Standard Components	Room Tag: 3591
Room Name	Play Area - Paediatric, 15m2	Room Code: PLAP-15

Services

ID	Description	Service Category	Qty	Selection / Remarks
5000	Airconditioning	HVAC		
6000	General fluorescent	Lighting		

AUSTRALASIAN HFG STANDARD COMPONENTS

Room Layout Sheet

Room Name

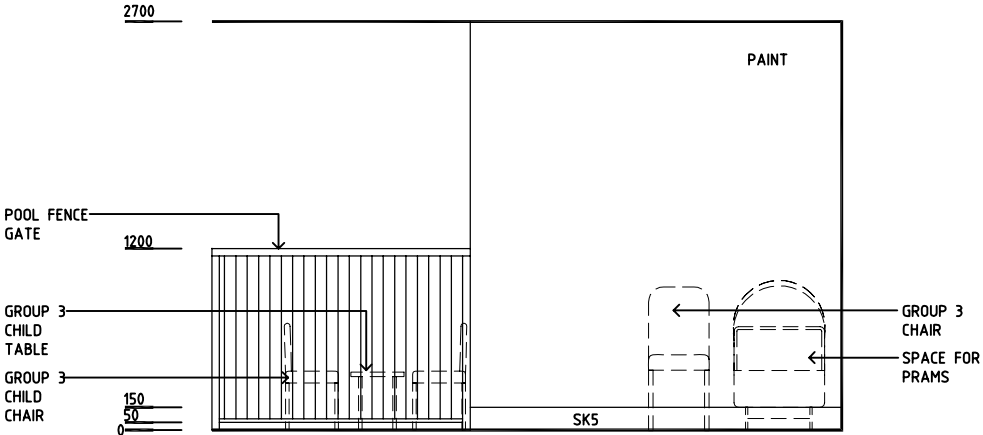
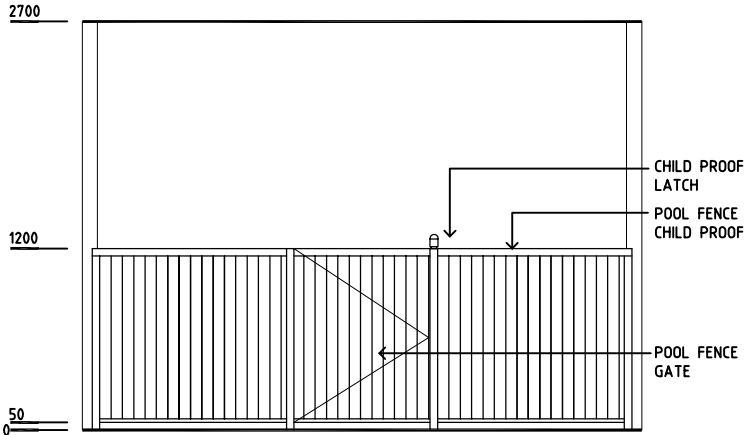
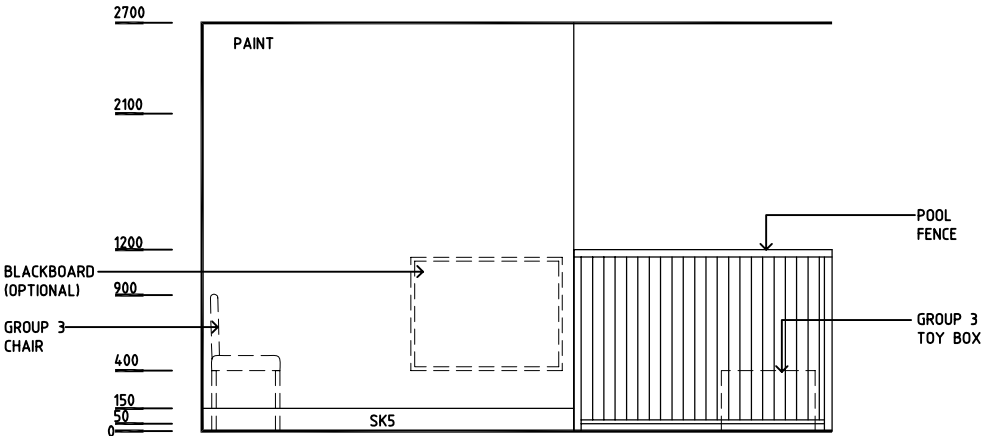
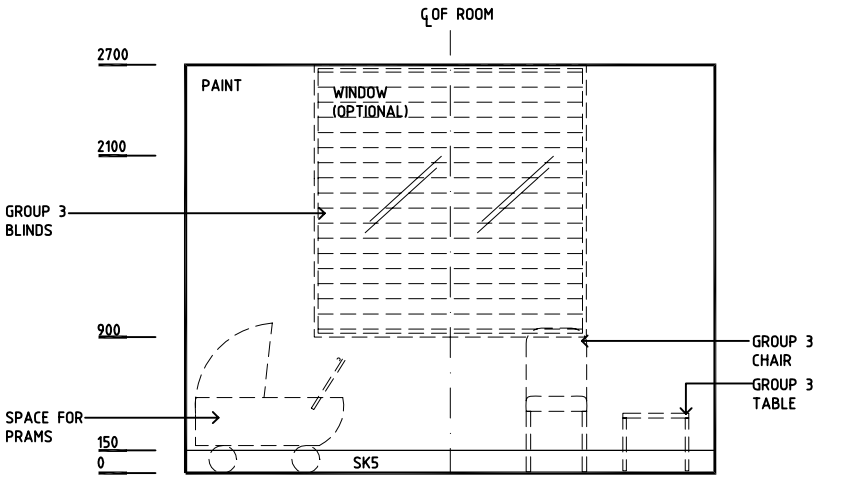
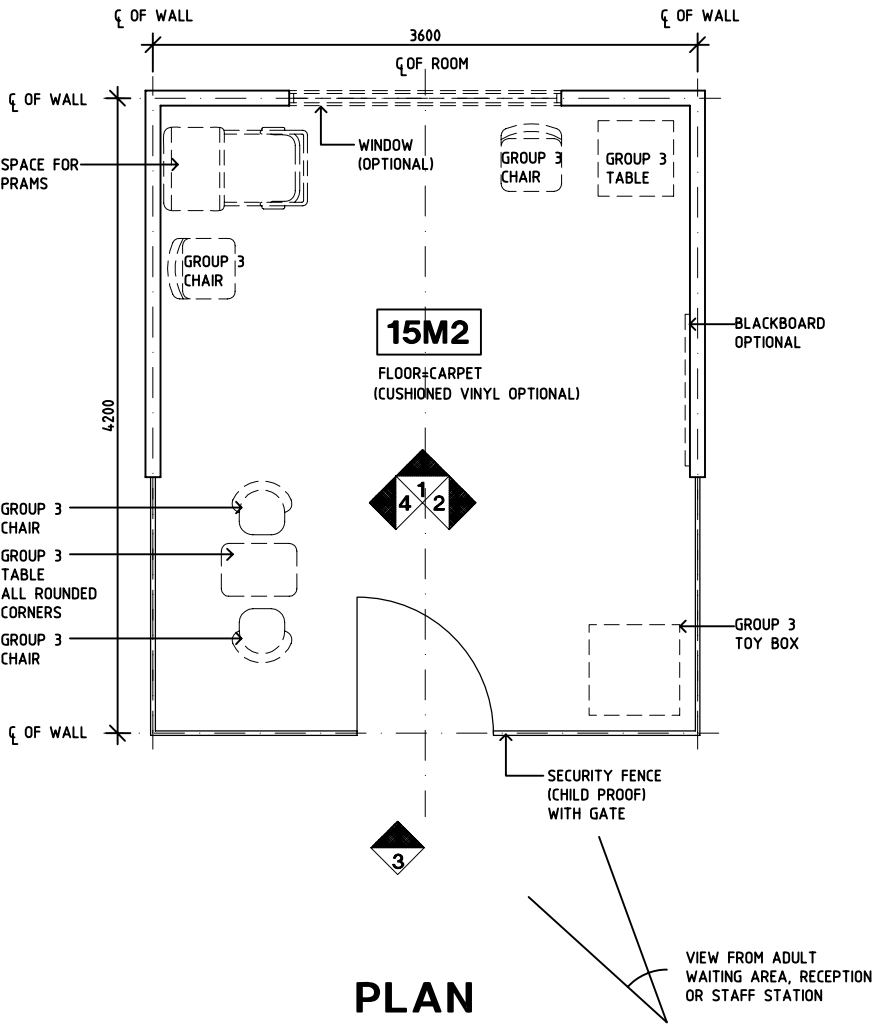
Play Area - Paediatric, 15m2

RLS Room Code PLAP-15

RDS Room Code PLAP-15

SK5

FEATHER EDGE VINYL SKIRTING



REV	DESCRIPTION	DATE	BY	REV	DESCRIPTION	DATE	BY	REV	DESCRIPTION	DATE	BY
1	FIRST ISSUE	18.7.05	JMH								
2	2009 AUS HFG REVIEW, BOTTOM RAIL LOWERED	10.03.09	CT								

Australasian HFG

AHIA in association with
UNSW



DESIGNED	APPROVED	SCALE(S)	ZONE(S)
AL	DB	150 in A3	
CAD FILE NAME PLAP-15		PAPER DRAWING ID PLAP-15	

Australasian HFG Standard Components

Milestone: Default

Room Data Sheets

Department	Standard Components	Room Tag: 3840
Room Name	Security Room, 14m2	Room Code: SECR-14
Area	14.0 M2	
No of Rooms	1	
Subtotal of Area	14.0 M2	
Hours of Operation	24 Hours	
Occupancy	Up to 2 staff	
Also covers these Rooms		
Description/ Special Requirements	<p>A lockable room for security personnel to monitor surveillance equipment. Staff identity photographs may also be taken in this area. The Security Room should be located close to the Main Entrance / Emergency Unit after hours entry. The Security Room configuration may alter to suit different monitoring arrangements; refer to Security Room-Alternative for an alternative arrangement of surveillance monitors.</p> <p>Acoustics: Sound attenuation level - medium; Acoustic privacy required</p>	
Amendment	08.04.05, - First Draft	

Room Fabric and outline specifications

ID	Fabric	Material	Finish	Specification	Selection	Remarks
5060	Ceiling	Acoustic	Prefinished	Drop-in tiles, 600x1200		
6030	Cornice	Aluminium	Powdercoat	24mm shadow angle		
8000	Door protection	Vinyl	Prefinished	Kickplate, 300mm high		
9004	Doors	Solid Core/ Glass	Paint	Single leaf, observation panel		910mm clear opening, lockable
1149	Floor finish	Carpet	90/10 Wool/ Nylon	Broadloom, 48 oz.		
7031	Observation	Alum/ Safety glass	Powdercoat/ paint	Internal window		one way glass; with communication/document slots
2010	Skirting	Vinyl	Prefinished	Feather edged, 150 mmH		
3000	Wall finish	Paint	Acrylic, washable			
7001	Windows					Desirable, for surveillance of external areas

Fittings and Furniture (FF)

ID	Description	Category	Group	Qty	Selection
1050	Bench: laminate	Furniture/ Fitting	1	1	
1250	Blind: Venetian	Metalwork	3	1	to external window, if provided
2100	Chair: ergonomic, office	Furniture/ Fitting	3	2	
2600	Chair: visitor, office	Furniture/ Fitting	3	1	
3400	Coathook	Metalwork	1	2	
4230	Counter top	Furniture/ Fitting	1	1	to communication window
4360	Cupboard: door ht adj. shelves	Furniture/ Fitting	1	1	lockable
17360	Pinboard: fabric covered	Furniture/ Fitting	1	1	above bench

Australasian HFG Standard Components

Milestone: Default

Room Data Sheets

Department
Room Name

Standard Components
Security Room, 14m2

Room Tag: 3840
Room Code: SECR-14

ID	Description	Category	Group	Qty	Selection
18160	Projection screen: ceiling mount	Furniture/ Fitting	1	1	900mmW, for photo backdrop, as required
20012	Shelving unit: fixed shelves	Furniture/ Fitting	1	1	monitor chambers for CCTV monitors, optional
24100	Waste bin: paper, 20 Litre	Furniture/ Fitting	3	1	under bench

Fixtures, Equipment and associated Services (FE)

ID	Description	Group	Qty	Ele	Data	CdW	HtW	WmW	Tap	Dns	Gas	Selection
7500	Camera: ID photo	3	1	yes	___	___	___	___	___	___	___	optional, on tripod stand
11400	Computer: PC & monitor	3	2	yes	yes	___	___	___	___	___	___	flat screen
35860	Monitor: CCTV	3	9	yes	yes	___	___	___	___	___	___	to monitor chambers, if provided
41100	Printer: networked	3	1	yes	yes	___	___	___	___	___	___	
54510	Telephone: handset, standard	3	2	___	yes	___	___	___	___	___	___	

Services

ID	Description	Service Category	Qty	Remarks
1090	TV: MATV	Communications	1	
1006	Voice / Data outlet: double	Communications	2	to workstations; 1 outlet on each panel for telephone
1006	Voice / Data outlet: double	Communications	1	to printer
1005	Voice / Data outlet: single	Communications	9	to monitor chambers, if provided
5000	Airconditioning	HVAC		
6000	General fluorescent	Lighting		
9001	GPO: Double	Power	5	2 per workstation +1-printer
9000	GPO: Single	Power	9	to monitor chambers, if provided

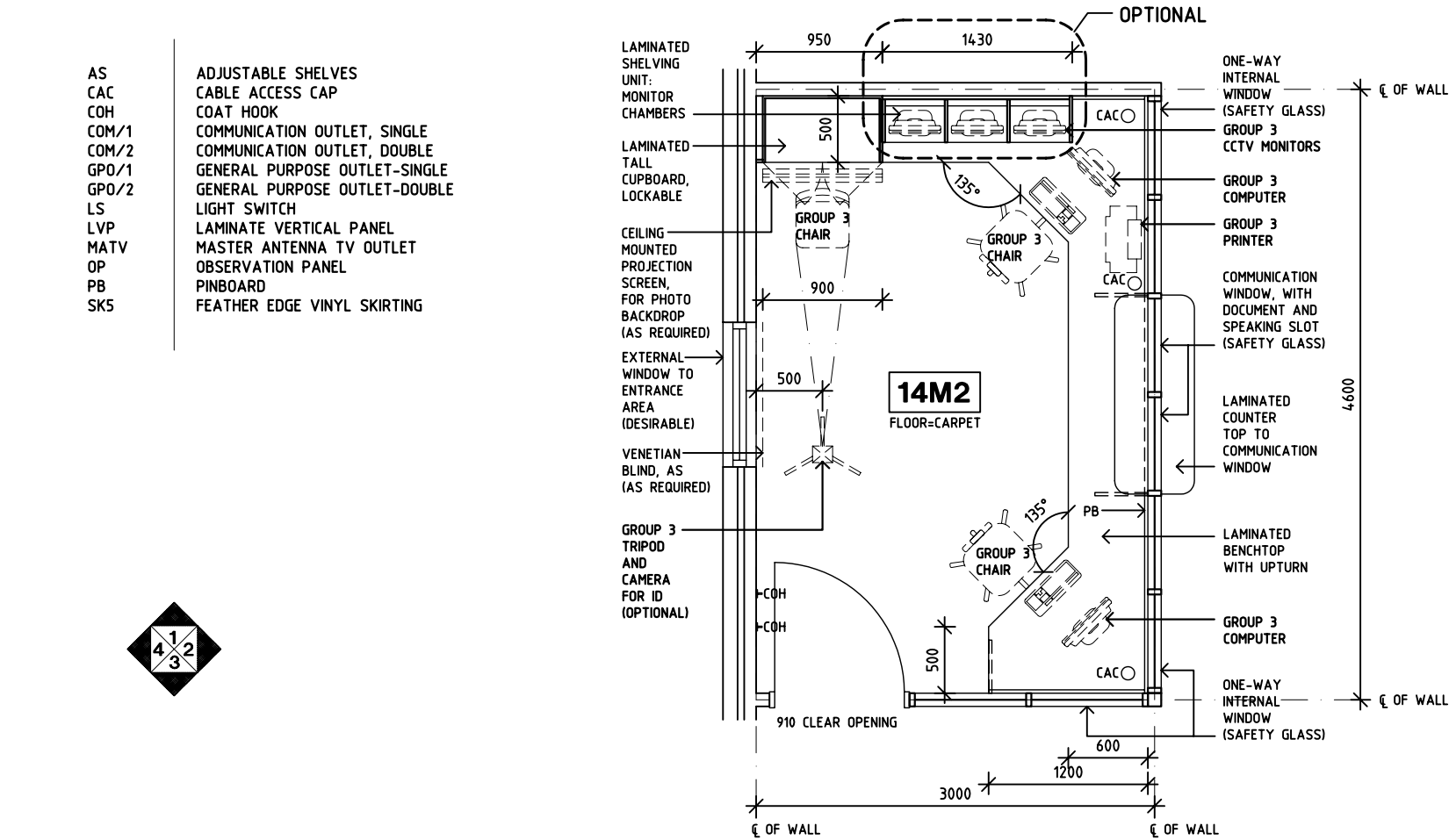
AUSTRALASIAN HFG STANDARD COMPONENTS

Room Layout Sheet

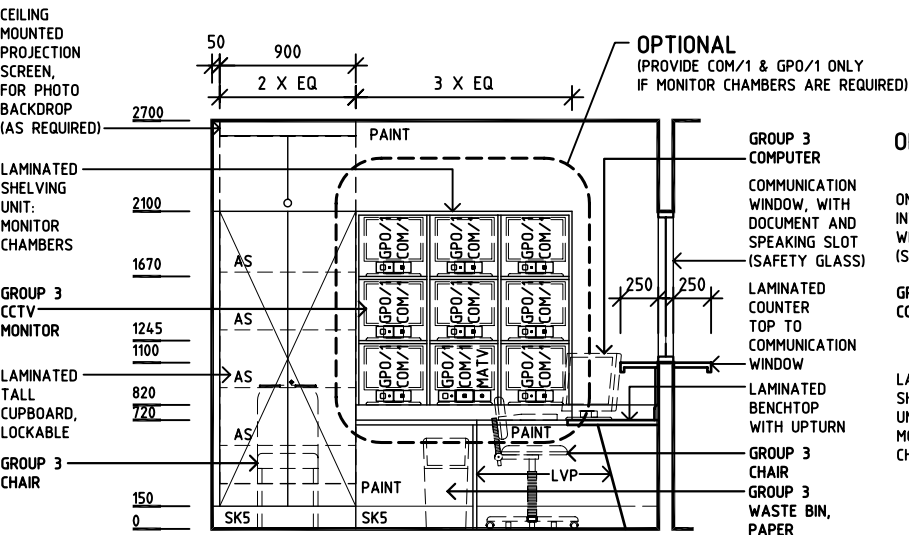
Room Name Security Room, 14m2

RLS Room Code SECR-14

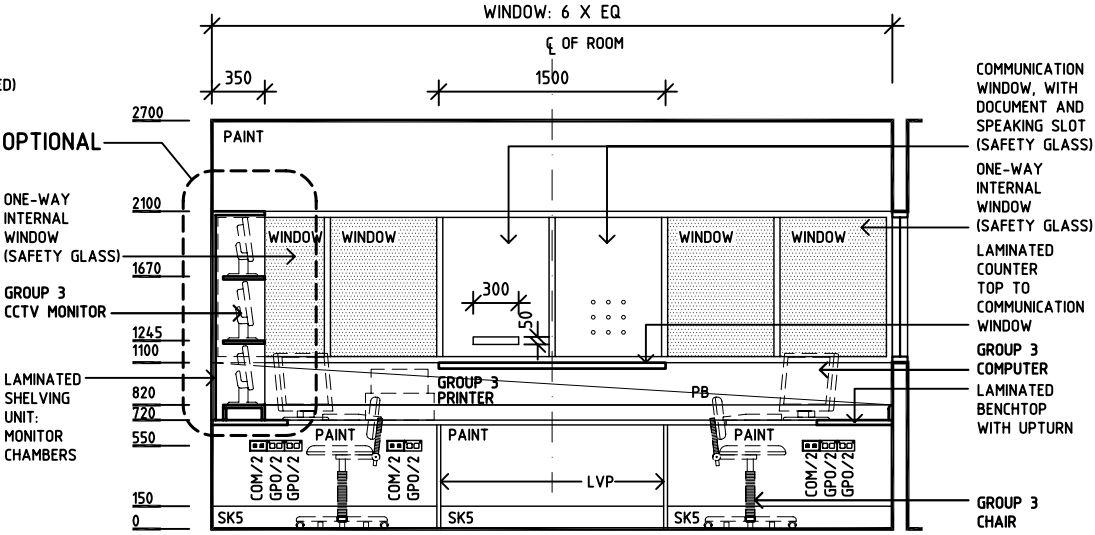
RDS Room Code SECR-14



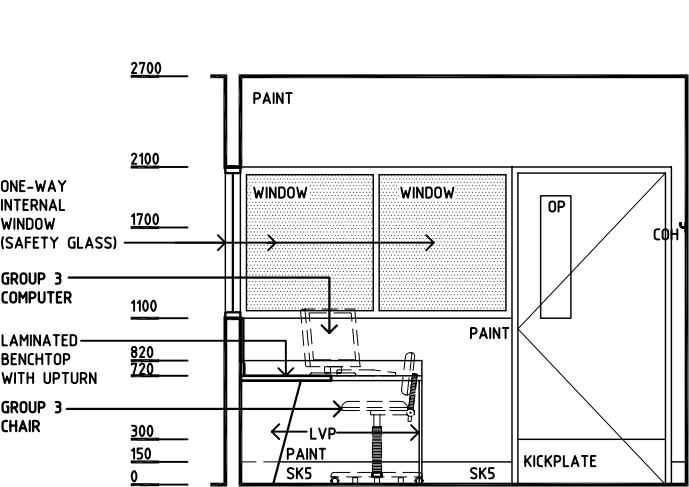
PLAN



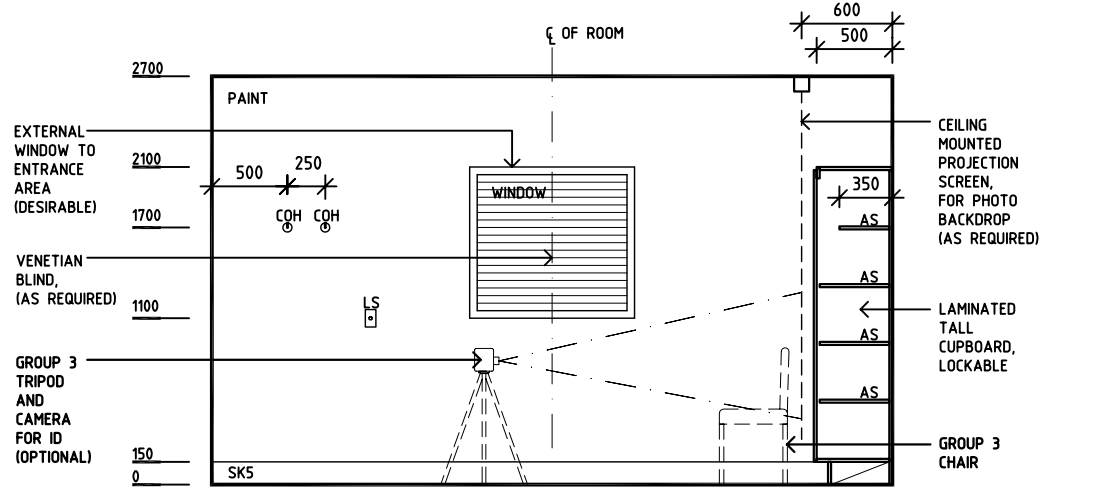
ELEVATION 1



ELEVATION 2



ELEVATION 3



ELEVATION 4

REV	DESCRIPTION	DATE	BY	REV	DESCRIPTION	DATE	BY	REV	DESCRIPTION	DATE	BY
1	FIRST ISSUE	29.07.05	HS								
AustralasianHFG						HCAMC in association with UNSW		HPI		DESIGNED BJJ/HS	
										APPROVED DB	
										SCALE(S) 1:50 in A3	
										ZONE(S)	
										PAPER DRAWING ID SECR-14	

Department	Standard Components	Room Tag: 4040
Room Name	Staff Room, 30m2	Room Code: SRM-30
Net Room Area Briefed	30.0 M2	
No of Rooms	1	
Subtotal of Briefed Area	30.00 M2	
Hours of Operation	24 Hours	
Occupancy	Up to 25	
Also covers these Rooms		
Description/ Special Requirements	<p>The Staff Room is a shared facility for staff to use for respite, rest and relaxation during meal breaks, especially where it is difficult for staff to use common facilities particularly at night. The room may also be used for small meetings or tutorials and for the storage of staff resources or library materials. Facilities for food and beverage preparation and storage should be provided. Where possible the Staff Room should be shared between two Inpatient Units or one per floor in a larger facility. An external outlook is desirable.</p> <p>Acoustics: Sound attenuation level - high; Acoustic privacy is required.</p>	
Amendment	<p>24.01.05, - First Draft 08.02.05, - BOB User review, telephone & whiteboard added 10.03.09, - 2009 AUSHFG Review; Description modified, default finishes noted</p>	

Room Fabric and outline specifications

ID	Fabric	Material	Finish	Specification	Selection	Remarks
5060	Ceiling	Acoustic	Prefinished	Drop-in tiles, 600x1200		
6030	Cornice	Aluminium	Powdercoat	24mm shadow angle		
8000	Door protection	Vinyl	Prefinished	Kickplate, 300mm high		
9004	Doors	Solid Core/ Glass	Paint	Single leaf, observation panel		910mm clear opening, lockable
1149	Floor finish	Carpet	90/10 Wool/ Nylon	Broadloom, 48 oz.		Default = carpet; vinyl also acceptable
1000	Floor finish	Vinyl	Standard slip resistant	Seamless, coved		to dining area
2010	Skirting	Vinyl	Prefinished	Feather edged, 150 mmH		Default = featheredge vinyl; floor vinyl coved skirting
3000	Wall finish	Paint	Acrylic, washable			
3060	Wall finish	Vinyl	Prefinished	Splashback		to sink bench; Default = vinyl; tiles also acceptable
7001	Windows					desirable

Fittings and Furniture (FF)

ID	Description	Category	Group	Qty	Selection / Remarks
1050	Bench: laminate	Furniture/ Fitting	1	1	with inset sink/ drainer
1250	Blind: Venetian	Metalwork	3	1	to windows, curtains also acceptable
23410	Bracket: television, wall mount	Metalwork	1	1	optional
1700	Chair: dining	Furniture/ Fitting	3	16	
1800	Chair: easy	Furniture/ Fitting	3	3	

Department
Room Name

Standard Components
Staff Room, 30m2

Room Tag: 4040
Room Code: SRM-30

ID	Description	Category	Group	Qty	Selection / Remarks
4430	Cupboard: drawer unit	Furniture/ Fitting	1	1	under bench
4410	Cupboard: under bench	Furniture/ Fitting	1	1	adjustable shelves
4460	Cupboard: wall mounted	Furniture/ Fitting	1	1	over bench, adjustable shelves
6154	Dispenser: paper/ hand towel	Furniture/ Fitting	2	1	to sink
6156	Dispenser: soap	Furniture/ Fitting	2	1	to sink
12750	Lounge: 2 seat	Furniture/ Fitting	3	3	
17360	Pinboard: fabric covered	Furniture/ Fitting	1	1	900mm x 900mm; optional
16455	Rack: magazine	Furniture/ Fitting	3	1	optional
19990	Shelving unit: microwave	Furniture/ Fitting	1	1	over bench
23000	Table: dining	Furniture/ Fitting	3	2	
22800	Table: low	Furniture/ Fitting	3	3	
24102	Waste bin: general	Furniture/ Fitting	3	1	under bench
24400	Whiteboard	Furniture/ Fitting	2	1	900mm x 900mm; optional

Fixtures, Equipment and associated Services (FE)

ID	Description	Group	Qty	Ele	Data	CdW	HtW	WmW	Tap	Dns	Gas	Selection / Remarks
5000	Boiling water unit: 5 Litre	1	1	yes	___	yes	___	___	yes	yes	___	
44100	Refrigerator: 250 Litre, domestic	3	1	yes	___	___	___	___	___	___	___	or underbench
47890	Sink & drainer: single, 930mmL	1	1	___	___	yes	opt	opt	yes	yes	___	hot water
54510	Telephone: handset, standard	3	1	___	yes	___	___	___	___	___	___	wall telephone
54580	Television: 54 cm	3	1	yes	___	___	___	___	___	___	___	optional

Services

ID	Description	Service Category	Qty	Selection / Remarks
1000	Telephone: PABX	Communications	1	wall telephone
1090	TV: MATV	Communications	1	
1006	Voice / Data outlet: double	Communications	2	
5000	Airconditioning	HVAC		
6000	General fluorescent	Lighting		
8040	Annunciator	Nurse Call		to be audible in this room
9001	GPO: Double	Power	3	1 over bench
9000	GPO: Single	Power	3	fridge, BWU, microwave
9060	GPO: Special: for equipment	Power	1	TV, optional

AUSTRALASIAN HFG STANDARD COMPONENTS

Room Layout Sheet

Room Name

Staff Room, 30m2

RLS Room Code SRM-30

RDS Room Code SRM-30

- AS

BWU

COM/2

DHT

DS

GPO/1

GPO/2

LS

OP

PB

MATV

SK5

V1

WB

WT
- ADJUSTABLE SHELF

BOILING WATER UNIT

COMMUNICATION OUTLET - DOUBLE

DISPENSER - HAND TOWEL

DISPENSER - SOAP

GENERAL PURPOSE OUTLET - SINGLE

GENERAL PURPOSE OUTLET - DOUBLE

LIGHT SWITCH

OBSERVATION PANEL

PINBOARD

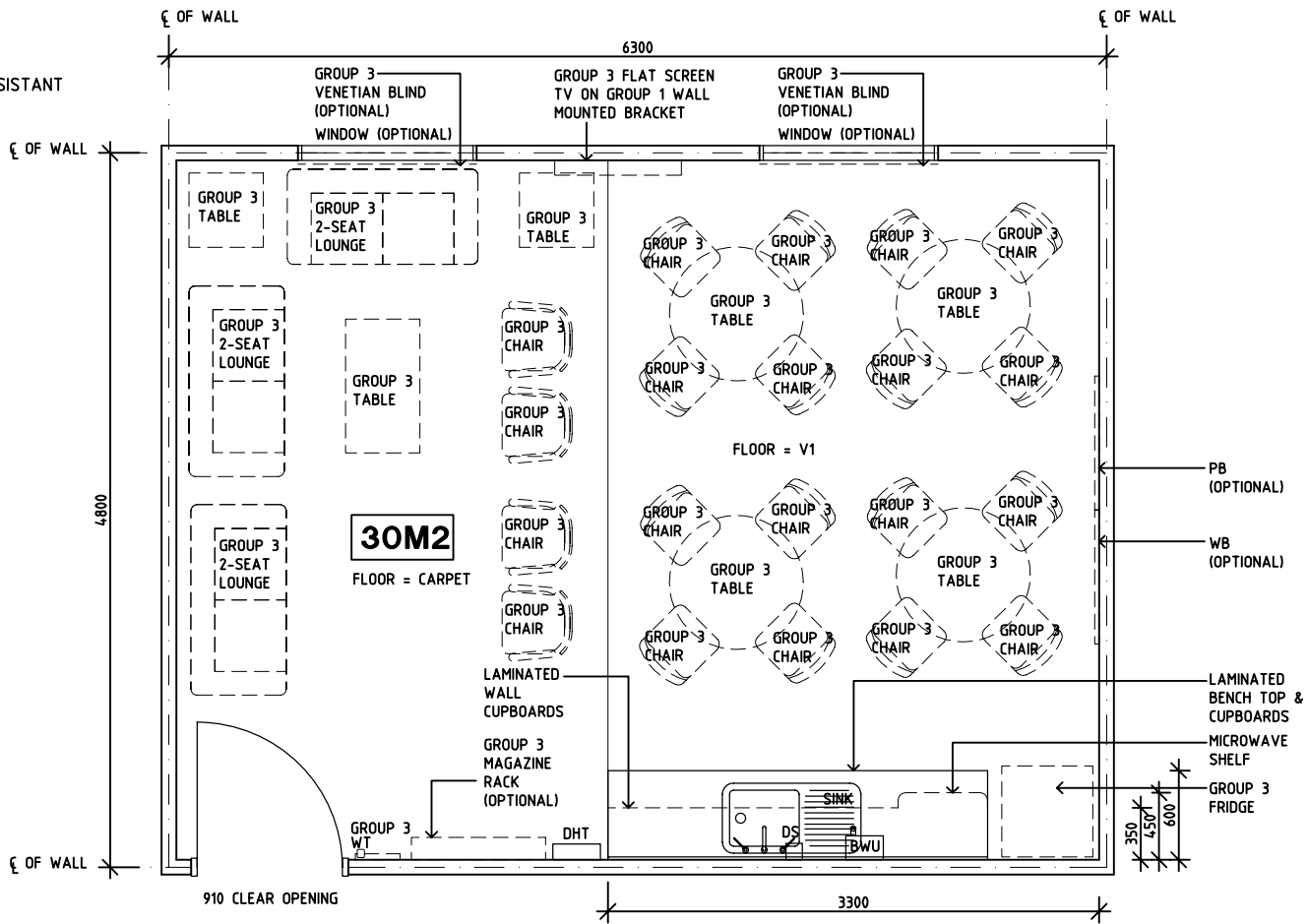
TV CONNECTION

VINYL FEATHER EDGE SKIRTING

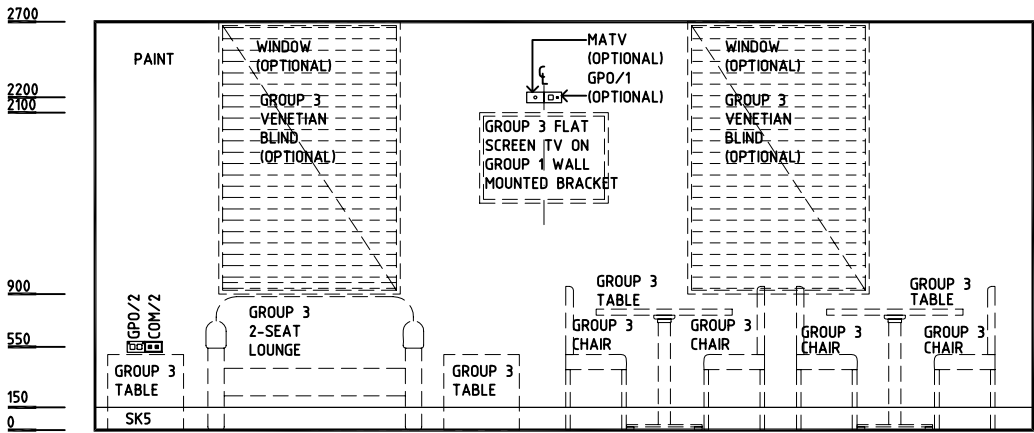
VINYL FLOORING, STANDARD SLIP RESISTANT

WHITE BOARD

WALL TELEPHONE



PLAN



ELEVATION 1

REV	DESCRIPTION	DATE	BY	REV	DESCRIPTION	DATE	BY	REV	DESCRIPTION	DATE	BY
1	FIRST ISSUE	14.6.05	BJ								
2	2009 AUS HFG REVIEW, GENERAL REVISION	10.03.09	KC								

AustralasianHFG

AHIAin association withUNSW



DESIGNED	APPROVED	SCALE(S)	ZONE(S)
AA	DB	1:50 in A3	
CAD FILE NAME		PAPER DRAWING ID	
SRM-30		SRM-30a	

AUSTRALASIAN HFG STANDARD COMPONENTS

Room Layout Sheet

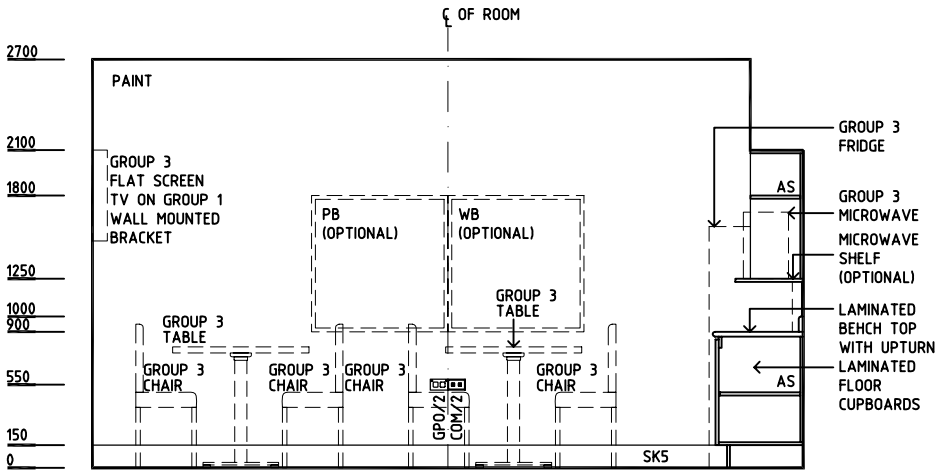
Room Name

Staff Room, 30m2

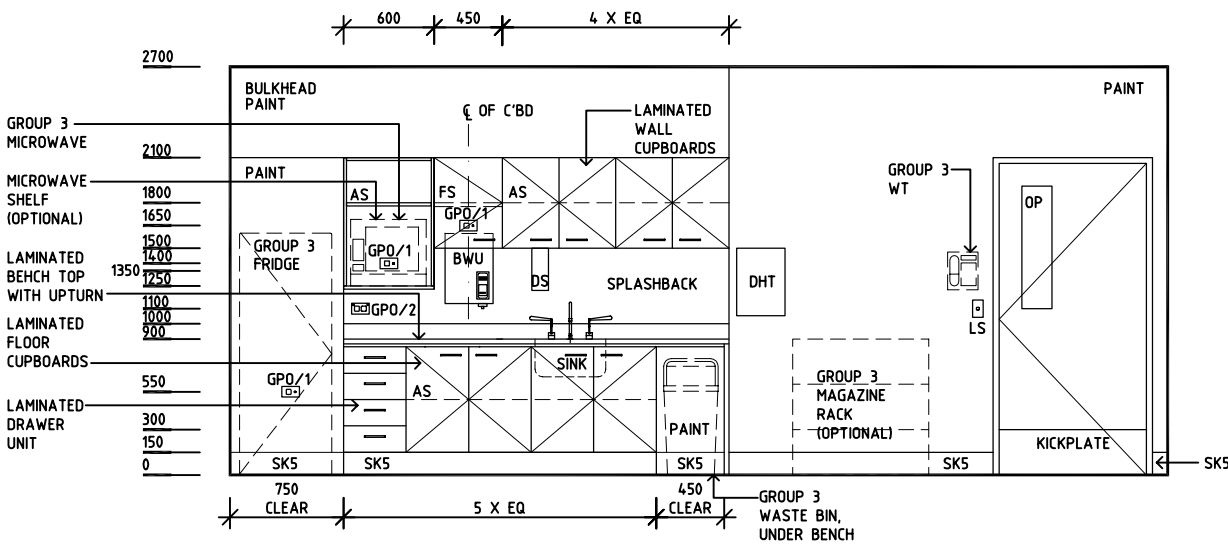
RLS Room Code SRM-30

RDS Room Code SRM-30

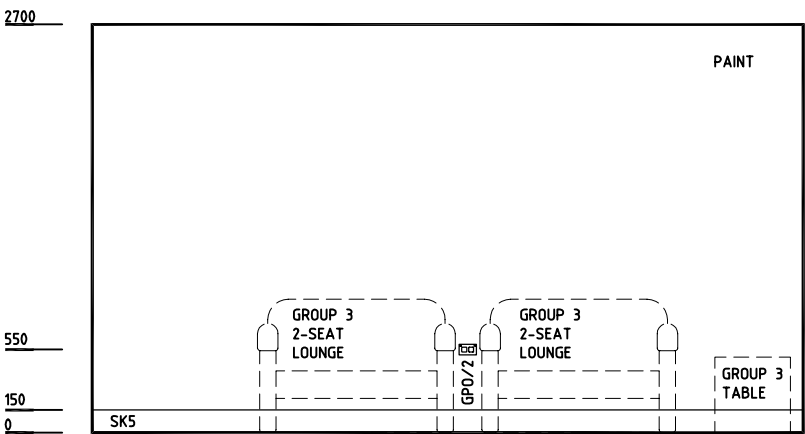
AS	ADJUSTABLE SHELF
BWU	BOILING WATER UNIT
COM/2	COMMUNICATION OUTLET - DOUBLE
DHT	DISPENSER - HAND TOWEL
DS	DISPENSER - SOAP
GP0/1	GENERAL PURPOSE OUTLET - SINGLE
GP0/2	GENERAL PURPOSE OUTLET - DOUBLE
LS	LIGHT SWITCH
OP	OBSERVATION PANEL
PB	PINBOARD
MATV	TV CONNECTION
SK5	VINYL FEATHER EDGE SKIRTING
V1	VINYL FLOORING, STANDARD SLIP RESISTANT
WB	WHITE BOARD
WT	WALL TELEPHONE



ELEVATION 2



ELEVATION 3



ELEVATION 4

REV	DESCRIPTION	DATE	BY	REV	DESCRIPTION	DATE	BY	REV	DESCRIPTION	DATE	BY
1	FIRST ISSUE	14.6.05	BJ								
2	2009 AUS HFG REVIEW, GENERAL REVISION	10.03.09	KC								

Australasian HFG	AHIA in association with UNSW	HPI	DESIGNED	APPROVED	SCALE(S)	ZONE(S)
			AA	DB	150 in A3	
			CAD FILE NAME SRM-30		PAPER DRAWING ID SRM-30b	

Department	Standard Components	Room Tag: 4070
Room Name	Staff Station, 12m2	Room Code: SSTN-12
Net Room Area Briefed	12.0 M2	
No of Rooms	1	
Subtotal of Briefed Area	12.00 M2	
Hours of Operation	24 Hours	
Occupancy	Up to 2 staff	
Also covers these Rooms		
Description/ Special Requirements	<p>The Staff Station is the administrative base for a Unit in which it is located, and enquiry point for patients and visitors. It provides for the co-ordination of patient care, observation, writing up of clinical notes, entering data into computers and making and receiving telephone calls. The Staff Station may also accommodate a Unit Receptionist/ Clerk. The floor area may vary according to the Health Planning Unit in which it is located, activity level, number of full and part-time staff, the Operational Model and the building layout.</p> <p>Acoustics: Sound attenuation level - Medium; acoustic privacy required.</p> <p>Special Design Requirements:</p> <ul style="list-style-type: none"> - Staff Station should have a set down area for disabled access - Lockable counter height doors may be provided for additional security if required - If doors are required, access for disabled staff may require consideration 	
Amendment	<p>24.01.05, - First Draft 08.02.05, - BOB User review, unchanged 10.03.09, - 2009 AUSHFG Review; Description modified; default fabric noted</p>	

Room Fabric and outline specifications

ID	Fabric	Material	Finish	Specification	Selection	Remarks
5060	Ceiling	Acoustic	Prefinished	Drop-in tiles, 600x1200		
5007	Ceiling	Plasterboard	Paint	Bulkhead		optional
6030	Cornice	Aluminium	Powdercoat	24mm shadow angle		
9050	Doors	Laminate	Prefinished	Single leaf, counter height		910mm clear opening, lockable, optional for security
9002	Doors	Solid Core/ Glass	Paint	Single leaf, half glazed		910mm clear opening, optional to adjoining Office-Clinical
1000	Floor finish	Vinyl	Standard slip resistant	Seamless, coved		Default = vinyl; carpet also acceptable
2000	Skirting	Vinyl	Prefinished	Floor vinyl coved, 150 mmH		Default = coved vinyl; vinyl featheredge skirting over carpet
3000	Wall finish	Paint	Acrylic, washable			
4010	Wall protection	Composite	Prefinished PVC	Combined rail & crash bar at 900 AFFL		to front of desk, optional

Department **Standard Components**
 Room Name **Staff Station, 12m2**

Room Tag: **4070**
 Room Code: **SSTN-12**

Fittings and Furniture (FF)

ID	Description	Category	Group	Qty	Selection / Remarks
2100	Chair: ergonomic, office	Furniture/ Fitting	3	2	
4230	Counter top	Furniture/ Fitting	1	1	resinate or laminate, to staff station
11465	Keyboard shelf: drop down	Furniture/ Fitting	1	2	optional
17255	Pedestal filing unit: mobile, 660mmH	Furniture/ Fitting	3	2	under bench, lockable
17360	Pinboard: fabric covered	Furniture/ Fitting	1	1	to upstand of staff station
21250	Staff station: laminate/ timber	Furniture/ Fitting	1	1	
24100	Waste bin: paper, 20 Litre	Furniture/ Fitting	3	1	under bench

Fixtures, Equipment and associated Services (FE)

ID	Description	Group	Qty	Ele	Data	CdW	HtW	WmW	Tap	Dns	Gas	Selection / Remarks
11400	Computer: PC & monitor	3	2	yes	yes	___	___	___	___	___	___	
54510	Telephone: handset, standard	3	2	___	yes	___	___	___	___	___	___	
68700	Xray viewer: 2 screen	1	1	yes	___	___	___	___	___	___	___	recessed

Services

ID	Description	Service Category	Qty	Selection / Remarks
1006	Voice / Data outlet: double	Communications	2	1 outlet on each panel for telephone
5000	Airconditioning	HVAC		
5070	Temperature control	HVAC	1	control panel, optional
6000	General fluorescent	Lighting		
6030	Special: downlights	Lighting		dimnable for night lighting
6055	Special: task light, built in	Lighting		under countertop
7050	Gas Alarm Panel	Medical Gases	1	as required
8040	Annunciator	Nurse Call	1	
9001	GPO: Double	Power	4	
9060	GPO: Special: for equipment	Power	1	X-ray viewer
10005	Duress alarm	Security	1	

AUSTRALASIAN HFG STANDARD COMPONENTS

Room Layout Sheet

Room Name

Staff Station, 12m2

RLS Room Code SSTN-12

RDS Room Code SSTN-12

- ACP

CAC

COM/2

GPO/2

LMS

LS/P

LVP

MGP

PB

SK4

XRV/2
- AIR CONDITIONING PANEL

CABLE ACCESS CAP

COMMUNICATION OUTLET, DOUBLE

GENERAL PURPOSE OUTLET-DOUBLE

LIGHTS MULTIGANG SWITCHPLATE

LIGHT SWITCH - PELMET TASK LIGHT

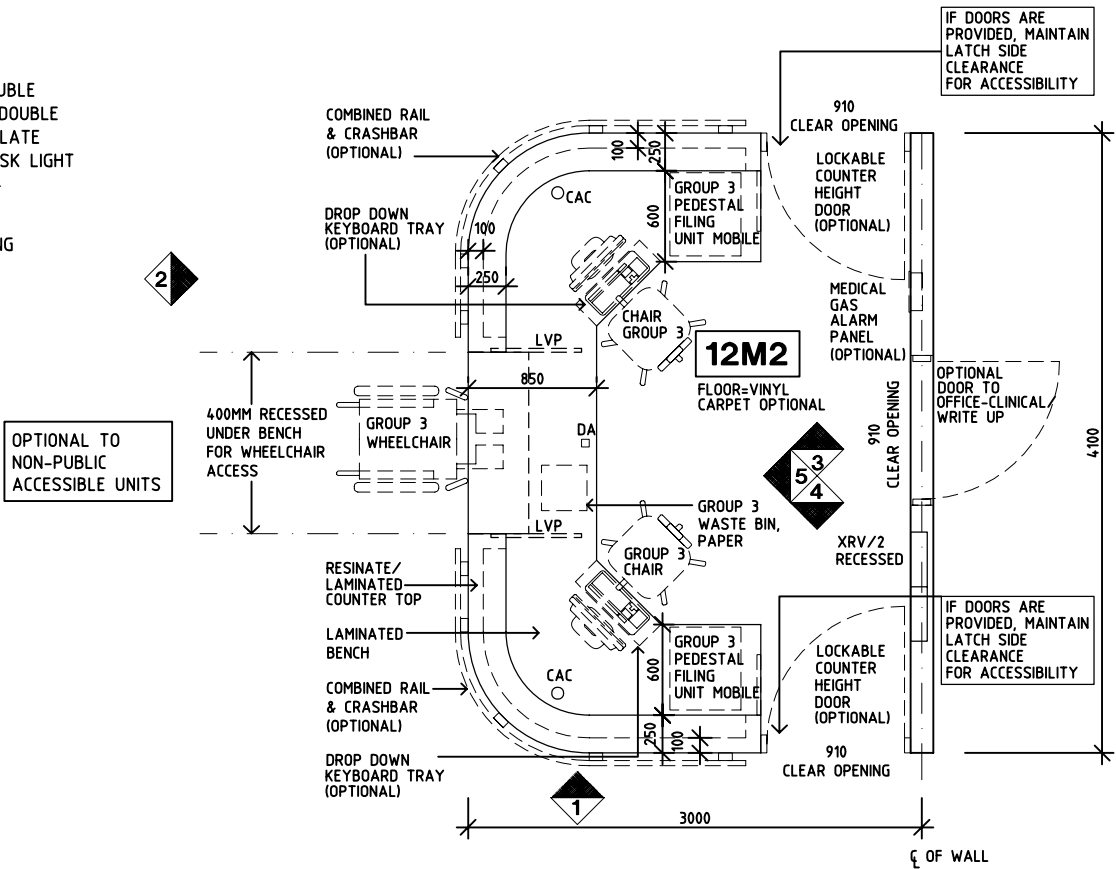
LAMINATED VERTICAL PANEL

MEDICAL GAS PANEL

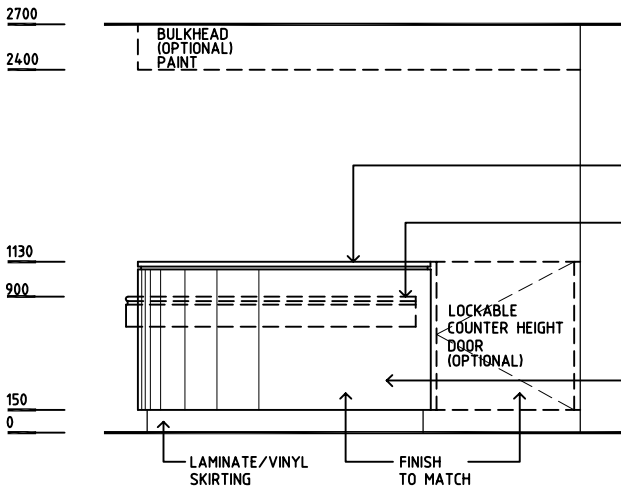
PINBOARD

FLOOR VINYL COVED SKIRTING

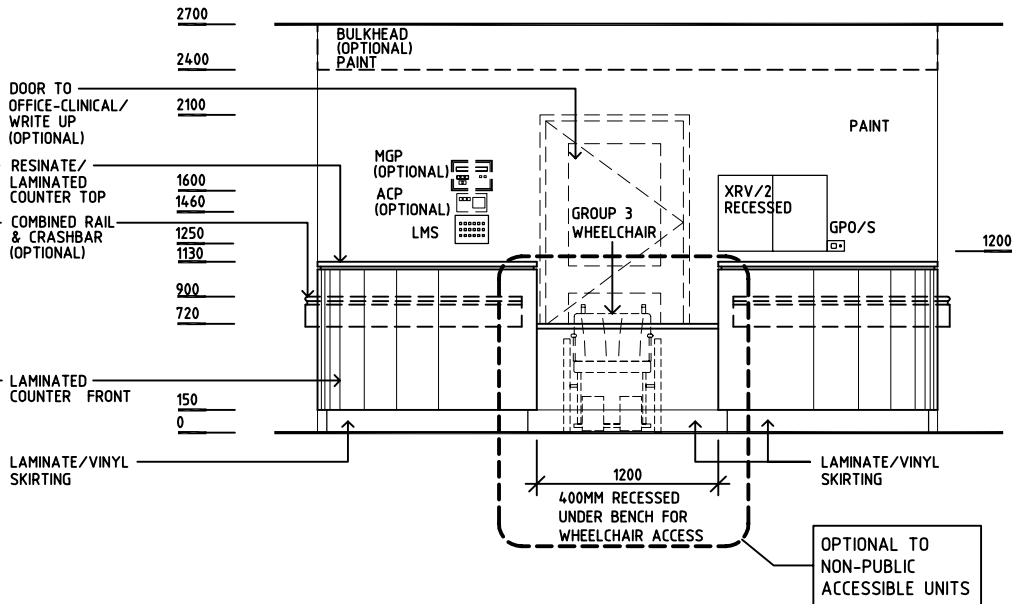
X-RAY VIEWER - 2 SCREEN



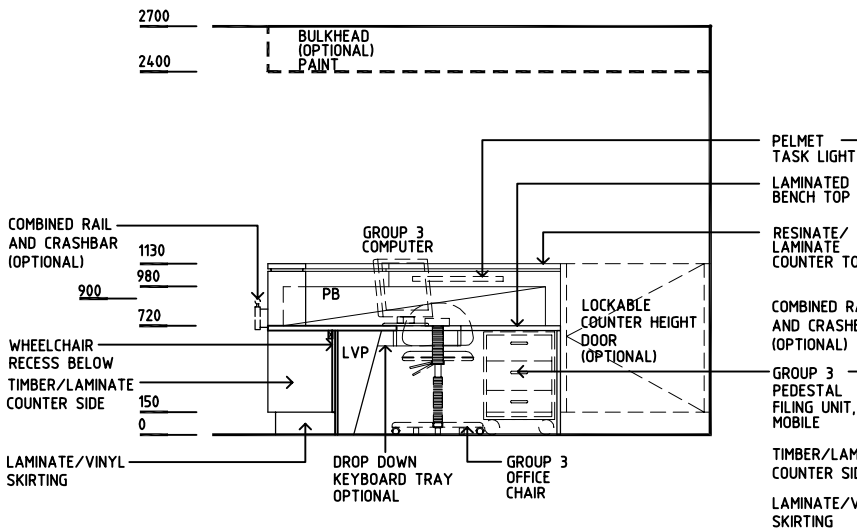
PLAN



ELEVATION 1

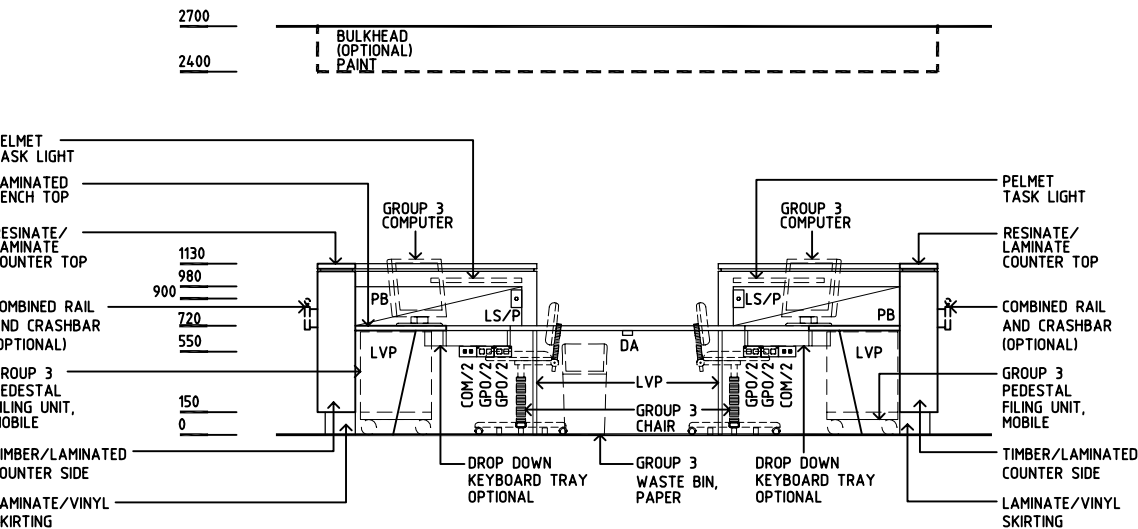


ELEVATION 2



ELEVATION 3

ELEVATION 4 (MIRRORED)



ELEVATION 5

REV	DESCRIPTION	DATE	BY	REV	DESCRIPTION	DATE	BY	REV	DESCRIPTION	DATE	BY
1	FIRST ISSUE	1.6.05	JMH								
2	GENERAL REVISIONS	14.08.08	MT								

AustralasianHFG

AHIA in association with UNSW



DESIGNED	APPROVED	SCALE(S)	ZONE(S)
AA	DB	150 in A3	
CAD FILE NAME		PAPER DRAWING ID	
SSTN-12		SSTN-12	

Australasian Standard Project

Room Data Sheets

Department	Standard Components	Room Tag: 4190
Room Name	Store - Drugs, 5m2	Room Code: STDR-5
Area	5.0 M2	
No of Rooms	1	
Subtotal of Area		
Hours of Operation	24 Hours	
Occupancy	1 - 2 intermittently	
Also covers these Rooms		
Description/ Special Requirements	The Drug Store is a room for storage of drugs and medications and may be located within an emergency care area. Secure storage and facilities for dispensing of medications is required.	
Amendment	21.02.05, - First Draft	

Room Fabric and outline specifications

ID	Fabric	Material	Finish	Specification	Selection	Remarks
5030	Ceiling	Plasterboard	Prefinished	Drop-in tiles, 600x1200		
6030	Cornice	Aluminium	Powdercoat	24mm shadow angle		
8010	Door protection	Composite	Prefinished PVC	Protection plate to 900 AFFL		Equal to 'Acrovyn'
8040	Door protection	Composite	Prefinished PVC	To door frame		Equal to 'Acrovyn'
9004	Doors	Solid Core/ glass	Paint	Single leaf, observation panel		910mm clear opening; Lock set
1000	Floor finish	Vinyl	Standard slip resistant	Seamless, coved		
2000	Skirting	Vinyl	Prefinished	Floor vinyl coved, 150 mmH		
3000	Wall finish	Paint	Acrylic, washable			
3056	Wall finish	Vinyl	Prefinished	Vinyl wall paper to 1500 AFFL		tiles also acceptable

Fittings and Furniture (FF)

ID	Description	Category	Group	Qty	Selection
1050	Bench: laminate	Furniture/ Fitting	1	1	
4375	Cupboard: medication, lockable	Furniture/ Fitting	1	1	
4420	Cupboard: under bench, lockable	Furniture/ Fitting	1	1	adjustable shelves
4470	Cupboard: wall mounted, lockable	Furniture/ Fitting	1	1	over bench
12900	Louvred panel: for storage-bins	Metalwork	1	2	above bench, optional
19060	Safe: dangerous drugs, small	Furniture/ Fitting	1	1	in cupboard
21755	Storage bins	Furniture/ Fitting	3	10	for louvred panels, optional

Fixtures, Equipment and associated Services (FE)

ID	Description	Group	Qty	Ele	Data	CdW	HtW	WmW	Tap	Dns	Gas	Selection
44350	Refrigerator: drugs	3	1	yes	opt	___	___	___	___	___	___	under bench
54510	Telephone: handset, standard	3	1	___	yes	___	___	___	___	___	___	on bench, optional

Australasian Standard Project
Room Data Sheets

Department | **Standard Components**
Room Name | **Store - Drugs, 5m2**

Room Tag: 4190
Room Code: STDR-5

Services

ID	Description	Service Category	Qty	Remarks
1006	Voice / Data outlet: double	Communications	1	1 outlet for telephone
5000	Airconditioning	HVAC		
6000	General fluorescent	Lighting		
6055	Special: task light, built in	Lighting		under O/H cupboards
9001	GPO: Double	Power	1	
9000	GPO: Single	Power	1	refrigerator

AUSTRALASIAN HFG STANDARD COMPONENTS

Room Layout Sheet

Room Name Store - Drugs, 5m2

RLS Room Code STDR-5

RDS Room Code STDR-5

- AS

DDG

DHT

DP

DS

FS

GPO/2

LS

OP

SK4

V1
- ADJUSTABLE SHELF

DISPENSER - DISPOSABLE GLOVES

DISPENSER - HAND TOWEL

DOOR AND FRAME PROTECTION

DISPENSER - SOAP

FIXED SHELF

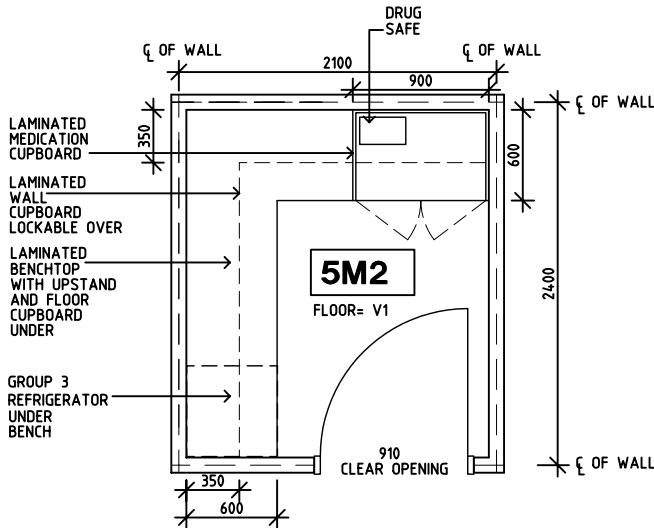
GENERAL PURPOSE OUTLET-DOUBLE

LIGHT SWITCH

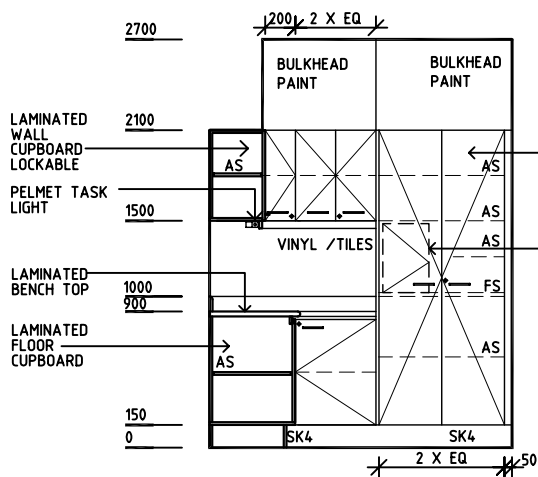
OBSERVATION PANEL

FLOOR VINYL COVERED SKIRTING

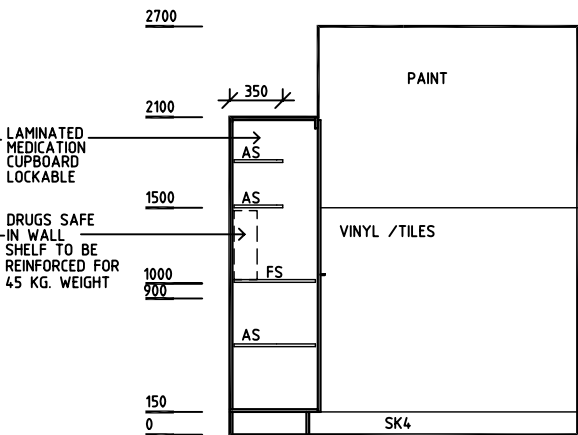
VINYL FLOORING, STANDARD



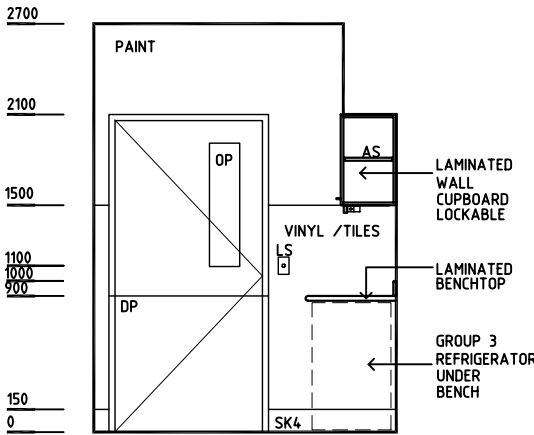
PLAN



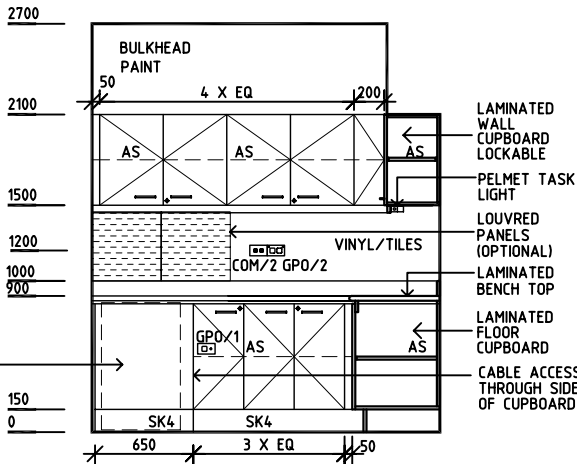
ELEVATION 1



ELEVATION 2



ELEVATION 3



ELEVATION 4

REV	DESCRIPTION	DATE	BY	REV	DESCRIPTION	DATE	BY	REV	DESCRIPTION	DATE	BY
1	FIRST ISSUE	11.7.05	HS								
<div><div>AustralasianHFG</div><div>HCAMC in association with UNSW</div><div>HPI</div></div>								DESIGNED	APPROVED	SCALE(S)	ZONE(S)
								AL	DB	1:50 in A3	
								CAD FILE NAME		PAPER DRAWING ID	
								STDR-5		STDR-5	

Department	Standard Components	Room Tag: 4730
Room Name	Waiting, 25m2	Room Code: WAIT-25
Net Room Area Briefed	25.0 M2	
No of Rooms	1	
Subtotal of Briefed Area	25.00 M2	
Hours of Operation	24 Hours	
Occupancy	Up to 20	
Also covers these Rooms		
Description/ Special Requirements	An area for visitors, patients and families to wait in comfort prior to or during visits to a Unit. A range of occupants will need to be considered including adults and children, both able-bodied, people with disabilities and provide bariatric capacity in many instances. An external outlook is desirable; waiting areas may be shared between Units; public amenities should be located nearby.	
Amendment	14.03.05, - First Draft 10.03.09, - 2009 AUSHFG Review; default finishes noted	

Room Fabric and outline specifications

ID	Fabric	Material	Finish	Specification	Selection	Remarks
5060	Ceiling	Acoustic	Prefinished	Drop-in tiles, 600x1200		
6030	Cornice	Aluminium	Powdercoat	24mm shadow angle		
1149	Floor finish	Carpet	90/10 Wool/ Nylon	Broadloom, 48 oz.		Default = Carpet: vinyl also acceptable
2010	Skirting	Vinyl	Prefinished	Feather edged, 150 mmH		Default = Feather edged: or floor vinyl coved skirting
3000	Wall finish	Paint	Acrylic, washable			
4030	Wall protection	Composite	Prefinished PVC	Corner guards to 900 AFFL		as required, Equal to Acrovyn
7001	Windows					desirable

Fittings and Furniture (FF)

ID	Description	Category	Group	Qty	Selection / Remarks
23410	Bracket: television, wall mount	Metalwork	1	1	
2700	Chair: waiting	Furniture/ Fitting	3	18	some with arms; space required for a minimum of 2 wheelchairs
4900	Curtain track: window	Metalwork	1	1	optional
5410	Curtain: window, drapes	Furniture/ Fitting	3	1	optional; may also use blinds
17360	Pinboard: fabric covered	Furniture/ Fitting	2	2	or artwork, optional
13120	Rack: magazine/ pamphlet	Furniture/ Fitting	3	1	
23295	Stand: public telephone	Furniture/ Fitting	3	1	optional
22800	Table: low	Furniture/ Fitting	3	2	

Fixtures, Equipment and associated Services (FE)

ID	Description	Group	Qty	Ele	Data	CdW	HtW	WmW	Tap	Dns	Gas	Selection / Remarks
41900	Telephone: public	3	1	yes	yes	___	___	___	___	___	___	optional
54580	Television: 54 cm	3	1	yes	___	___	___	___	___	___	___	Flat screen on bracket

Department
Room Name

Standard Components
Waiting, 25m2

Room Tag: 4730
Room Code: WAIT-25

Services

ID	Description	Service Category	Qty	Selection / Remarks
1011	Telephone: public phone	Communications	1	optional
1090	TV: MATV	Communications	1	
5000	Airconditioning	HVAC		
6000	General fluorescent	Lighting		
9015	GPO: Cleaner	Power	1	as required
9060	GPO: Special: for equipment	Power	2	TV, pay phone

AUSTRALASIAN HFG STANDARD COMPONENTS

Room Layout Sheet

Room Name Waiting - 25m2

RLS Room Code WAIT-25

RDS Room Code WAIT-25

- CG

COM/1

GPO/1

GPO/2

GPO/C

MATV

SK5
- CORNER GUARD

COMMUNICATION OUTLET, SINGLE

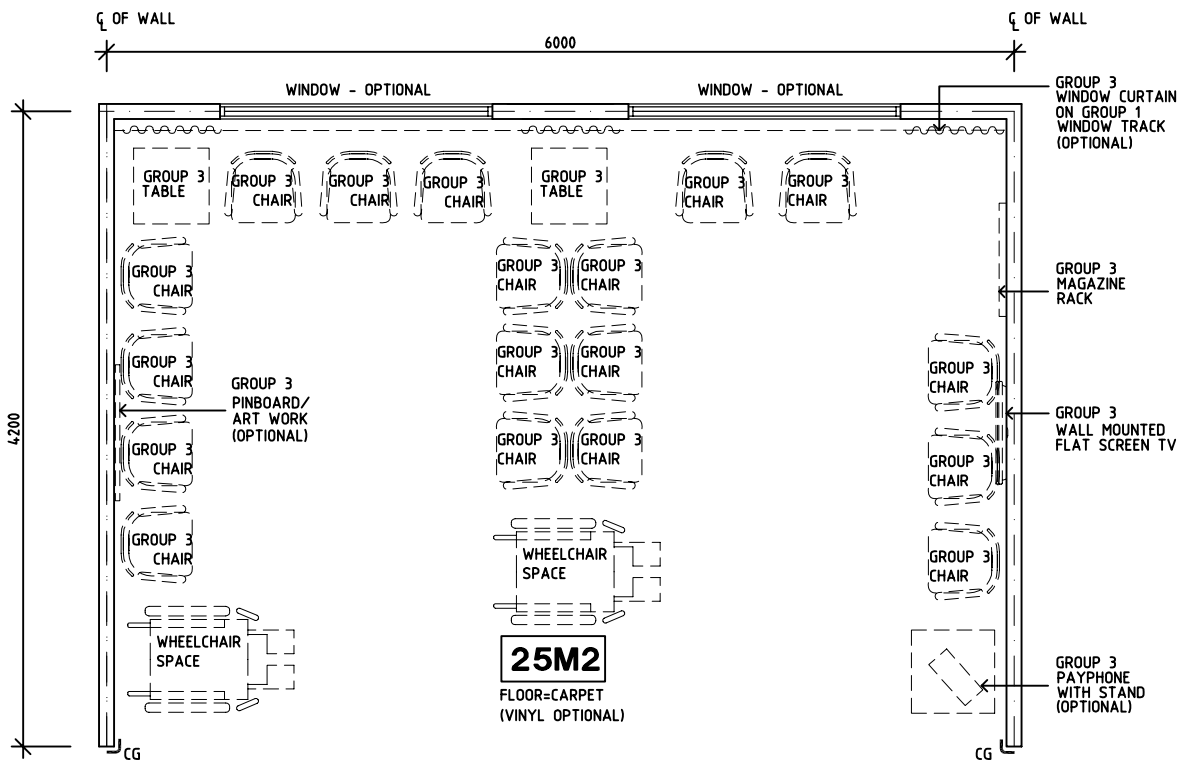
GENERAL PURPOSE OUTLET-SINGLE

GENERAL PURPOSE OUTLET-DOUBLE

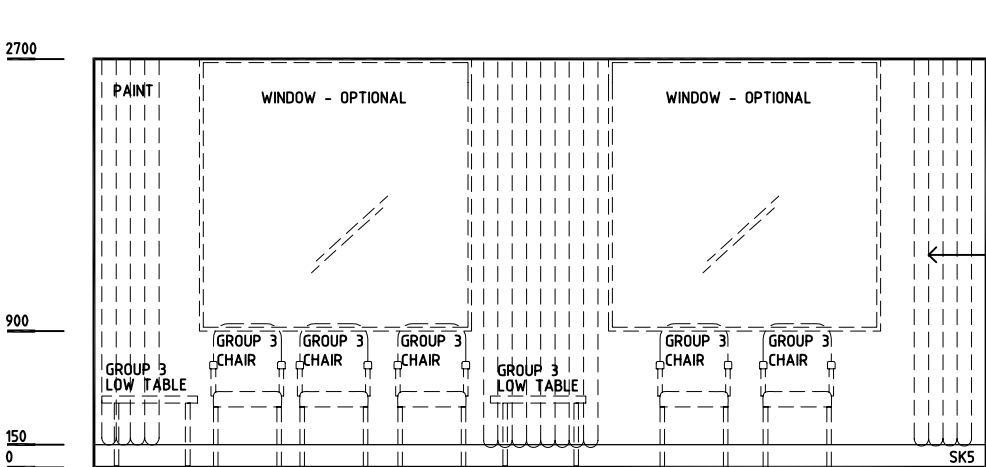
GENERAL PURPOSE OUTLET-CLEANER'S

TV ANTENNA

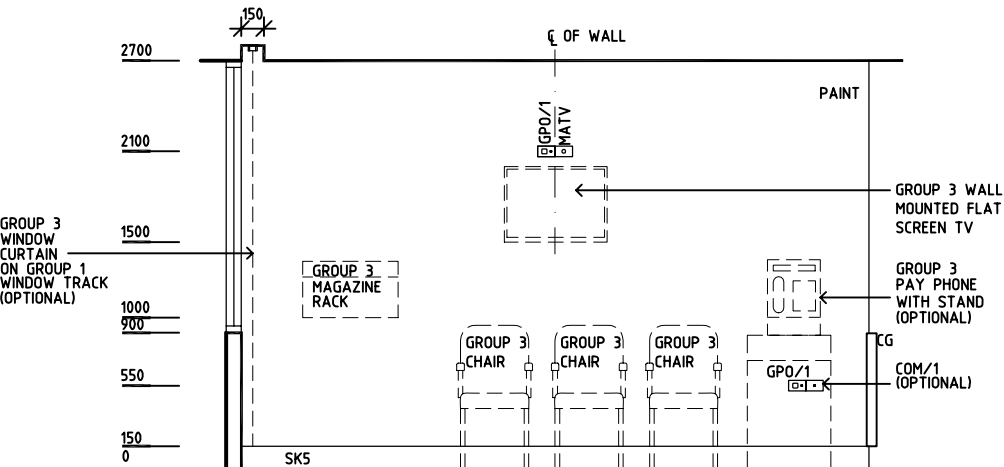
FEATHER EDGE VINYL SKIRTING



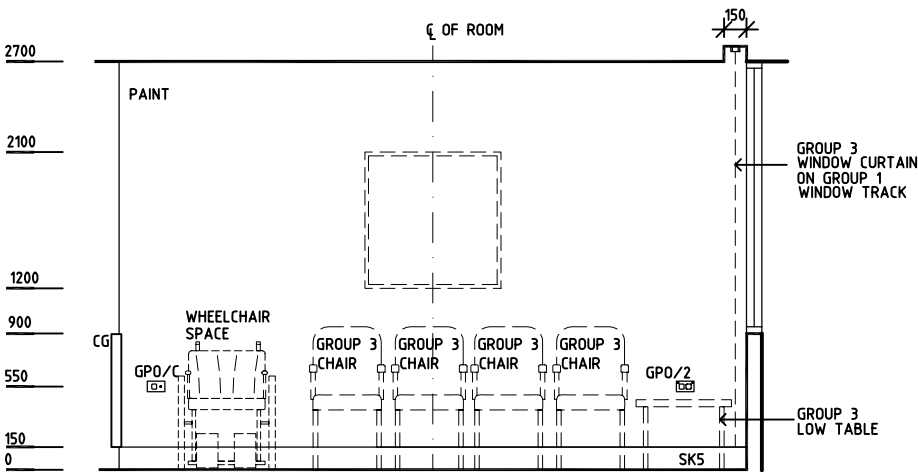
PLAN



ELEVATION 1



ELEVATION 2



ELEVATION 3

REV	DESCRIPTION	DATE	BY	REV	DESCRIPTION	DATE	BY	REV	DESCRIPTION	DATE	BY
1	FIRST ISSUE	16.6.05	AL								
2	GENERAL REVISIONS	27.4.06	ADS								
3	GENERAL REVISIONS	14.8.08	CX								

Australasian

HFG

AHIA

in association with

UNSW

HPI

DESIGNED	APPROVED	SCALE(S)	ZONE(S)
CC/AL/JH	DB	150 in A3	
CAD FILE NAME	PAPER DRAWING ID		
WAIT-25	WAIT-25		

Australasian Standard Project

Room Data Sheets

Department	Standard Components	Room Tag: 2350
Room Name	Ensuite - Standard - Additional Access	Room Code: ENS-ST-C
Area	5.0 M2	
No of Rooms	1	
Subtotal of Area	5.0 M2	
Hours of Operation	24 Hours	
Occupancy	1 patient; 1-2 staff assisting	
Also covers these Rooms		
Description/ Special Requirements	<p>An Ensuite is for a patient to wash, shave, groom themselves, shower and use the toilet, either independently or with assistance. The layout accommodates two assisting nurses, patient lifter and wheelchair access.</p> <p>The Ensuite may vary in configuration to suit different room types including an Inboard Ensuite and Outboard Ensuite.</p> <p>Acoustics: Sound attenuation level - High. Acoustic privacy required.</p> <p>Body Protected Electrical Area</p> <p>Additional Design Requirements:</p> <ul style="list-style-type: none"> - The shower floor must not have a raised hob - The entrance is to be flush with the adjoining flooring 	
Amendment	<p>24.01.05, - First Draft</p> <p>07.02.05, - BOB User review, fittings modified</p>	

Room Fabric and outline specifications

ID	Fabric	Material	Finish	Specification	Selection	Remarks
5023	Ceiling	Plasterboard	Prefinished	Water resistant, drop in tiles, 600x1200		water resistant set plasterboard ceiling also acceptable
6030	Cornice	Aluminium	Powdercoat	24mm shadow angle		
8010	Door protection	Composite	Prefinished PVC	Protection plate to 900 AFFL		Equal to Acrovyn
8040	Door protection	Composite	Prefinished PVC	To door frame		Equal to Acrovyn
9001	Doors	Solid Core	Paint	Single leaf		910 clear outward opening, privacy latch
1025	Floor finish	Vinyl, non slip	Studded	Seamless, coved		tiles also acceptable
2000	Skirting	Vinyl	Prefinished	Floor vinyl coved, 150 mmH		or tiles for a tiled floor
3000	Wall finish	Paint	Acrylic, washable			
3070	Wall finish	Vinyl	Prefinished	Wall vinyl full height		to wet areas; tiles also acceptable

Fittings and Furniture (FF)

ID	Description	Category	Group	Qty	Selection
530	Basin vanity top	Furniture/ Fitting	1	1	optional
2300	Chair: shower	Furniture/ Fitting	3	1	
3400	Coathook	Metalwork	1	2	1 @ 1200 AFFL for wheelchair users
4800	Curtain track: shower	Metalwork	1	1	

Australasian Standard Project

Room Data Sheets

Department

Standard Components

Room Tag: 2350

Room Name

Ensuite - Standard - Additional Access

Room Code: ENS-ST-C

ID	Description	Category	Group	Qty	Selection
5300	Curtain: shower	Furniture/ Fitting	3	1	
6152	Dispenser: disposable glove	Furniture/ Fitting	2	1	
6154	Dispenser: paper/ hand towel	Furniture/ Fitting	2	1	optional
6156	Dispenser: soap	Furniture/ Fitting	2	1	optional
6160	Dispenser: toilet paper	Furniture/ Fitting	1	1	locate on drop down rail
8450	Grab rail: Shower	Metalwork	1	1	
8500	Grab rail: WC, hinged	Metalwork	1	2	drop dpwn rails both sides of WC
9200	Hook: for catheter bag	Metalwork	1	2	
10800	Hook: for IV flasks	Metalwork	1	2	
13700	Mirror	Metalwork	1	1	over basin
20650	Soap/ shampoo holder	Furniture/ Fitting	1	1	
23700	Towel rail	Metalwork	1	1	with grab rail strength and fixings
24100	Waste bin: paper, 20 Litre	Furniture/ Fitting	3	1	to hand basin

Fixtures, Equipment and associated Services (FE)

ID	Description	Group	Qty	Ele	Data	CdW	HtW	WmW	Tap	Dns	Gas	Selection
3120	Basin: vanity	1	1	—	—	yes	—	yes	yes	yes	—	or basin-disabled if vanity not required
47400	Shower: hand-held	1	1	—	—	yes	—	yes	yes	yes	—	
55605	Toilet suite: patient	1	1	—	—	yes	—	—	yes	yes	—	with concealed cistern

Services

ID	Description	Service Category	Qty	Remarks
5000	Airconditioning	HVAC		
5019	Exhaust	HVAC		for heat/ steam
4033	Floor waste	Hydraulics	1	
6000	General fluorescent	Lighting		
8080	Emergency call	Nurse Call	1	+ indicator button & light
8070	Patient call pendant	Nurse Call	1	or locate NC directly on drop down rail
8000	Patient/ Staff call	Nurse Call	2	+ indicator button & light; may be located on drop down rail beside toilet
8010	Staff/ Nurse assist call	Nurse Call	1	+ indicator button & light
9040	Body protected	Power		
9001	GPO: Double	Power	1	

AUSTRALASIAN HFG STANDARD COMPONENTS

Room Layout Sheet

Room Name **Ensuite - Inboard (Alternative Option for Additional Access)**

RLS Room Code **ENS-ST-C**

RDS Room Code **ENS-ST-C**

- CH

COH

CP

DDG

DHT

DP

DS

DTP

EC

FW

GPO/2

GR

IV

IV

LS

NA

NC

S/SH

SK4

SS

TR

V3
- CATHETER HOOK

COAT HOOK

CHROME PLATED

DISPENSER - DISPOSABLE GLOVE

DISPENSER - HAND TOWEL

DOOR AND DOOR FRAME PROTECTION

DISPENSER - SOAP

DISPENSER - TOILET PAPER

EMERGENCY CALL

FLOOR WASTE

GENERAL POWER OUTLET, DOUBLE

GRAB RAIL

IV HOOK

IV HOOK

LIGHT SWITCH

NURSE ASSIST CALL

PATIENT NURSE CALL

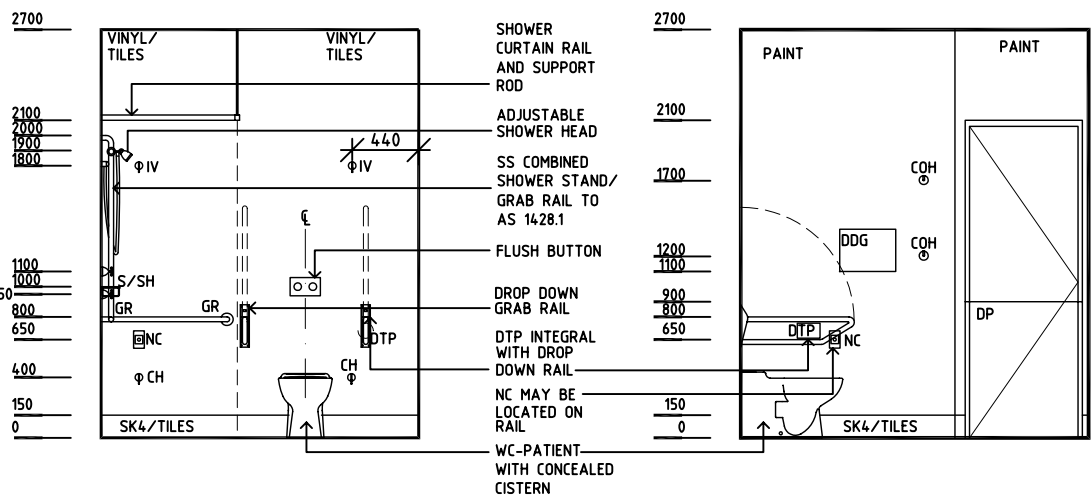
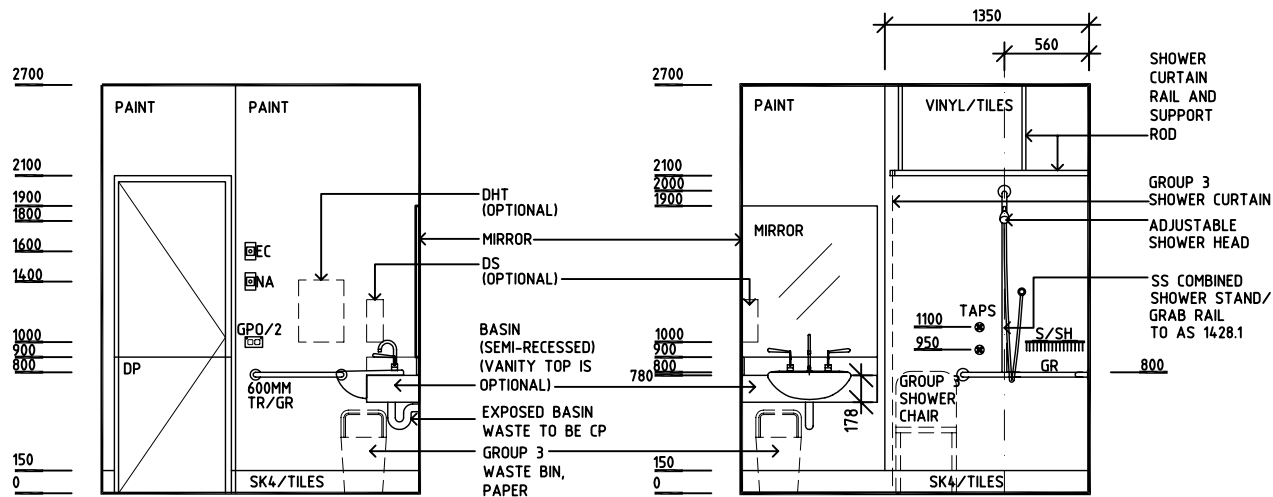
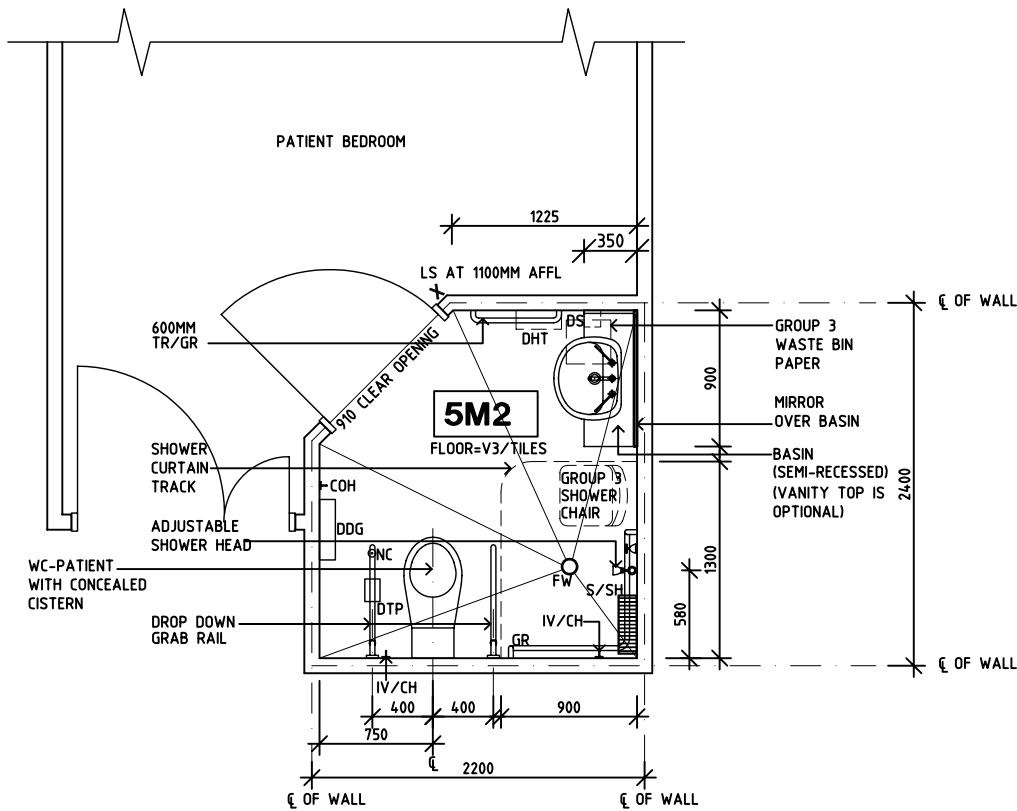
SOAP AND SHAMPOO HOLDER

FLOOR VINYL COVED SKIRTING

STAINLESS STEEL

TOWEL RAIL

FLOOR VINYL, STUDDED



REV	DESCRIPTION	DATE	BY	REV	DESCRIPTION	DATE	BY	REV	DESCRIPTION	DATE	BY
1	FIRST ISSUE	29.7.05	HS								
2	SECOND ISSUE	24.4.06	ADS								

Australasian HFG

HCAMC in association with UNSW

HPI

DESIGNED	APPROVED	SCALE(S)	ZONE(S)
CC/AL	DB	1:50 in A3	
CAD FILE NAME HYDP		PAPER DRAWING ID ENS-ST-C	