

AUSTRALASIAN HFG STANDARD COMPONENTS

Room Layout Sheet

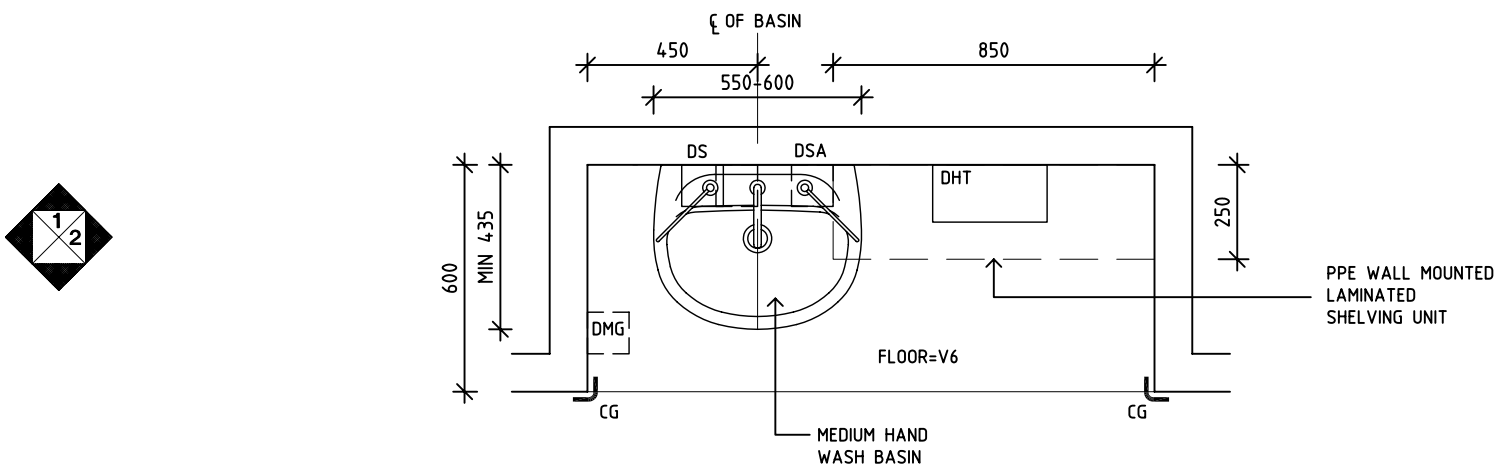
Room Name **Bay - Handwashing, PPE**

RLS Room Code **BHWS-PPE-1**

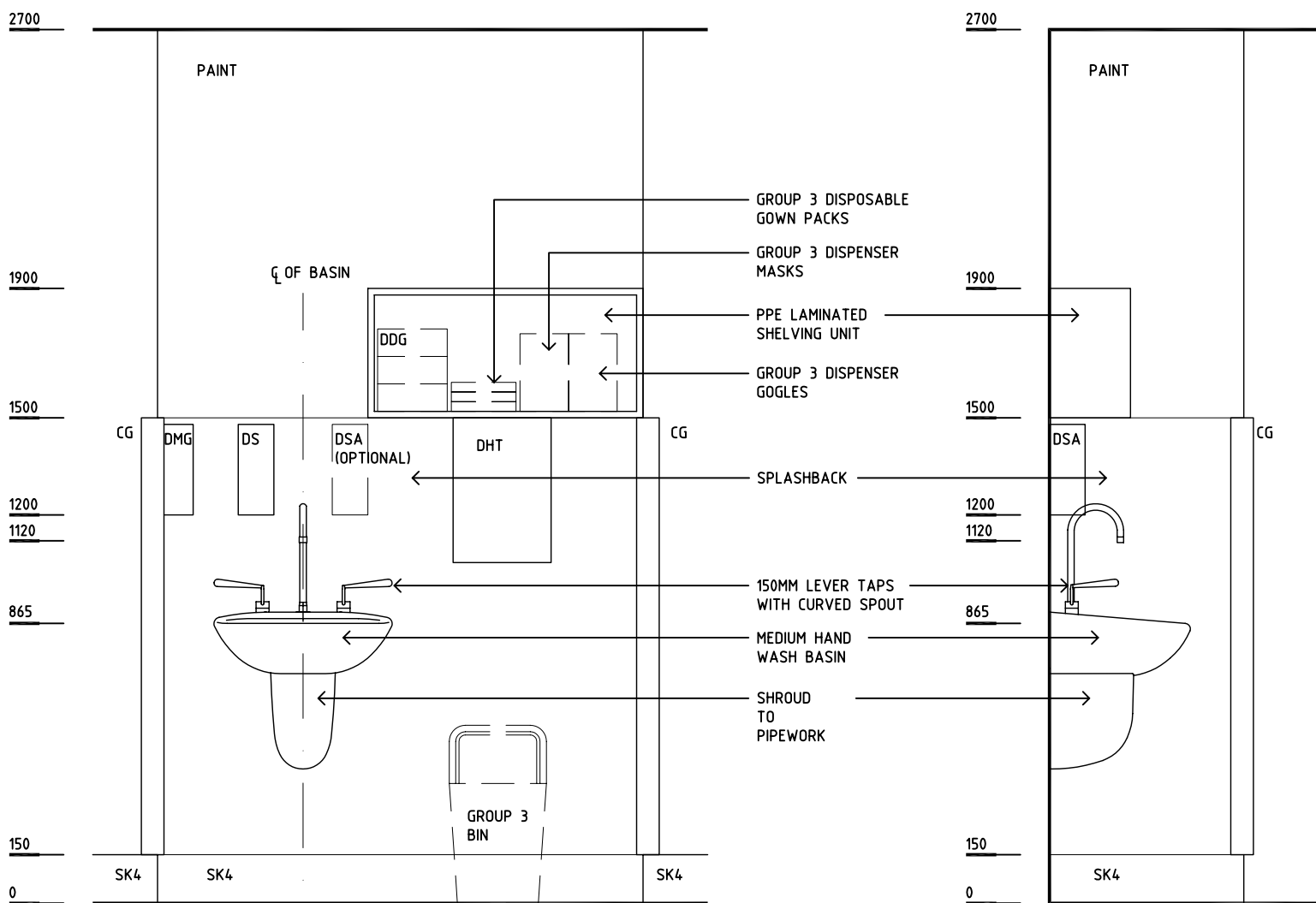
RDS Room Code **BHWS-PPE-1**

- CG CORNER GUARD
- DDG DISPENSER- DISPOSABLE GLOVE
- DMG DISPENSER- HAND TOWEL
- DHT DISPENSER- MEDICATED HAND GEL
- DS DISPENSER- SOAP
- DSA DISPENSER- SOAP ANTISEPTIC (OPTIONAL)
- SK4 FLOOR VINYL COVERED SKIRTING
- V6 VINYL FLOORING - TEXTURED

OPTION 1



PLAN



ELEVATION 1

ELEVATION 2

REV	DESCRIPTION	DATE	BY	REV	DESCRIPTION	DATE	BY	REV	DESCRIPTION	DATE	BY
1	2008 AUS HFG REVIEW, FIRST ISSUE	10.12.08	CX								

Australasian HFG

AHIA in association with
UNSW



DESIGNED	APPROVED	SCALE(S)	ZONE(S)
CX	DB	1:20 in A3	
CAD FILE NAME BHWS-PPE		PAPER DRAWING ID BHWS-PPE-1	

This document is for advisory purpose only

AUSTRALASIAN HFG STANDARD COMPONENTS

Room Layout Sheet

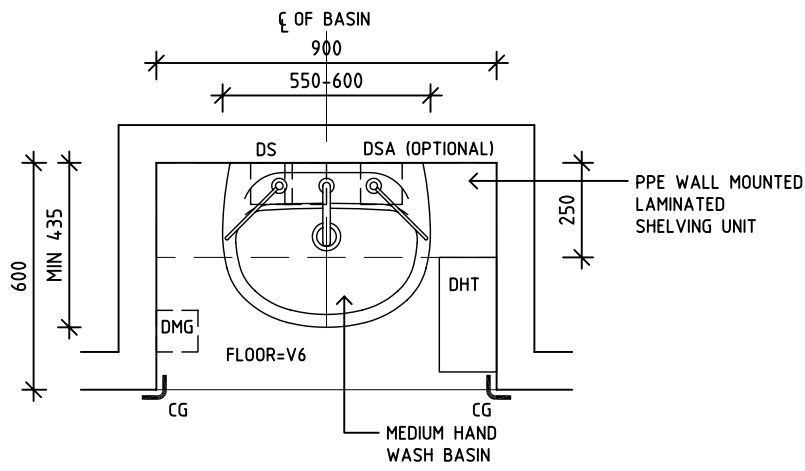
Room Name **Bay - Handwashing, PPE**

RLS Room Code **BHWS-PPE-2**

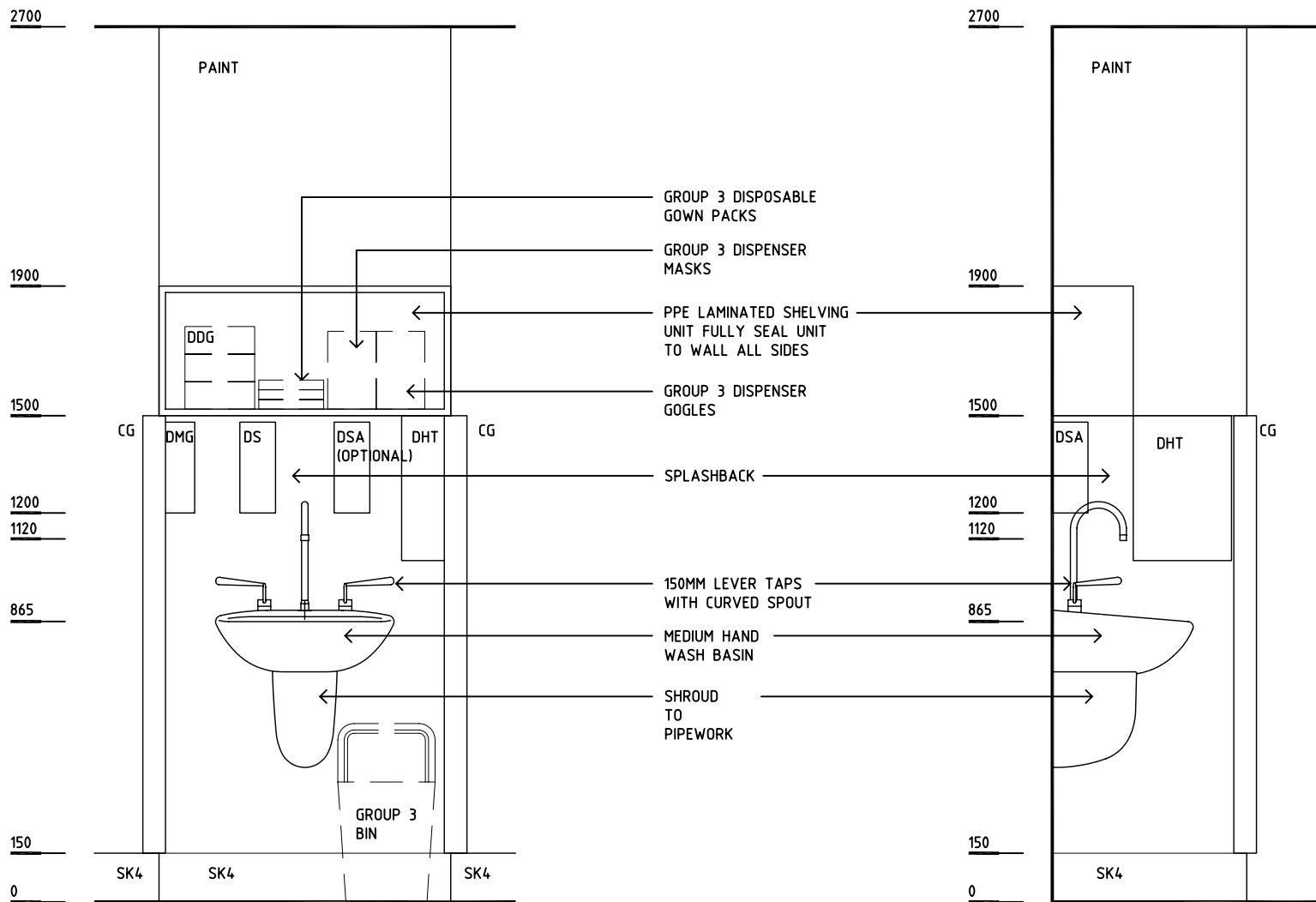
RDS Room Code **BHWS-PPE-2**

- CG CORNER GUARD
- DDG DISPENSER- DISPOSABLE GLOVE
- DMG DISPENSER- HAND TOWEL
- DHT DISPENSER- MEDICATED HAND GEL
- DS DISPENSER- SOAP
- DSA DISPENSER- SOAP ANTISEPTIC (OPTIONAL)
- SK4 FLOOR VINYL COVERED SKIRTING
- V6 VINYL FLOORING - TEXTURED

OPTION 2



PLAN



ELEVATION 1

ELEVATION 2

REV	DESCRIPTION	DATE	BY	REV	DESCRIPTION	DATE	BY	REV	DESCRIPTION	DATE	BY
1	2008 AUS HFG REVIEW, FIRST ISSUE	10.12.08	CX								



DESIGNED	APPROVED	SCALE(S)	ZONE(S)
CX	DB	1:20 in A3	
CAD FILE NAME BHWS-PPE		PAPER DRAWING ID BHWS-PPE-2	

This document is for advisory purpose only