

# AUSTRALASIAN HFG STANDARD COMPONENTS

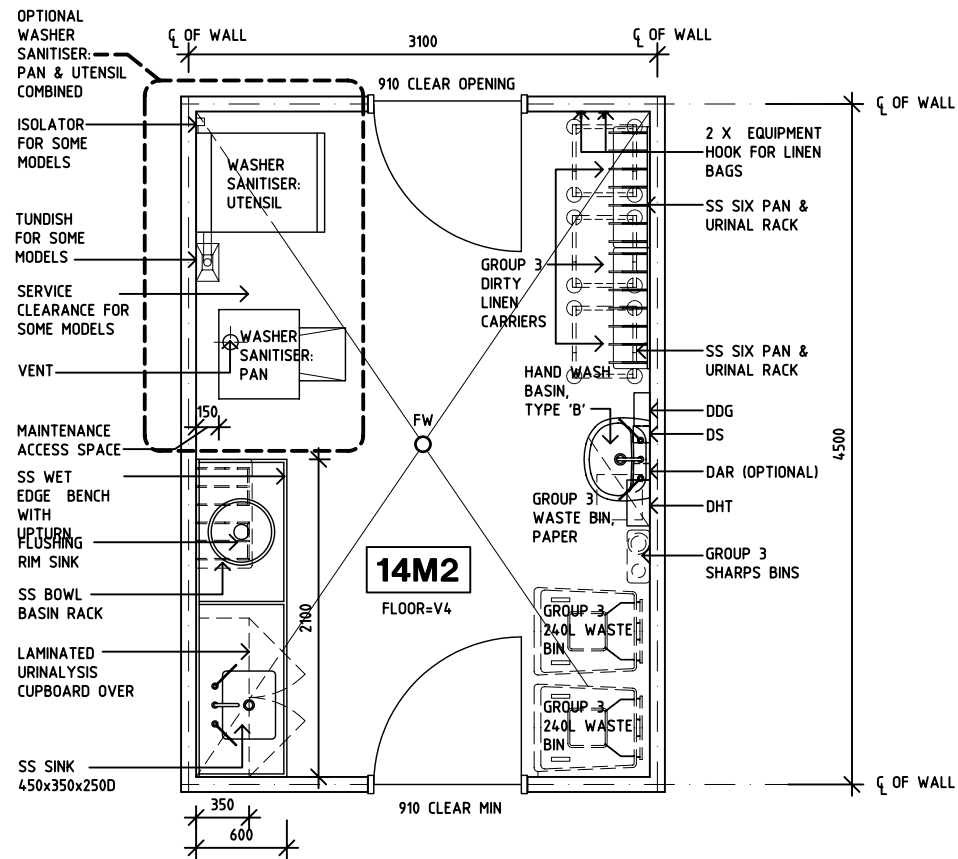
Room Layout Sheet

Room Name **Dirty Utility, 14m<sup>2</sup>**

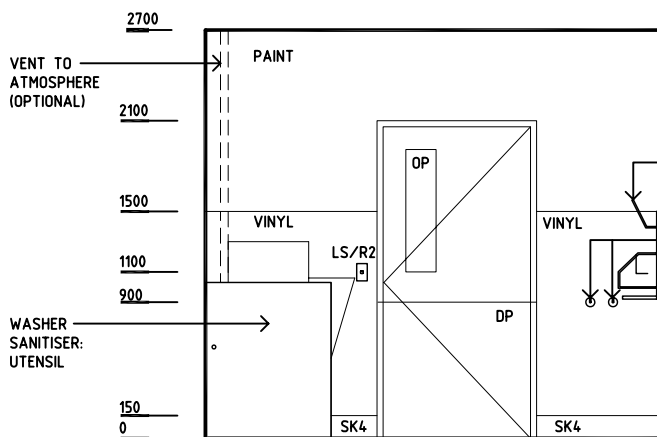
RLS Room Code **DTUR-14**

RDS Room Code **DTUR-14**

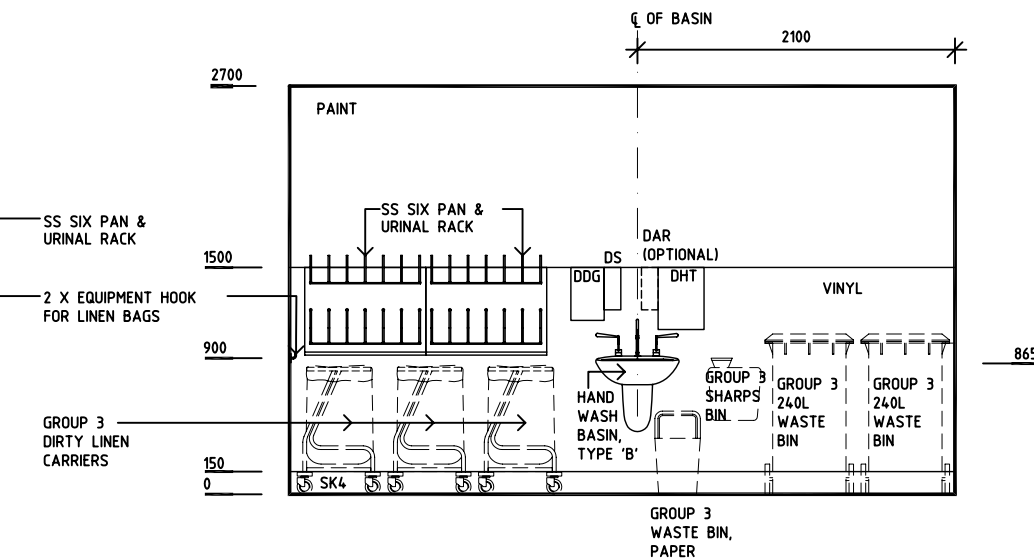
- AS ADJUSTABLE SHELF
- CH CATHETER HOOK
- CW COLD WATER OUTLET
- DAR DISPENSER - ALCOHOL RUB
- DDG DISPENSER - DISPOSABLE GLOVE
- DHT DISPENSER - HAND TOWEL
- DS DISPENSER - SOAP
- DP DOOR & DOOR FRAME PROTECTION
- FW FLOOR WASTE
- GPO/2 GENERAL PURPOSE OUTLET / DOUBLE
- GPO/S GENERAL PURPOSE OUTLET / SPECIAL FOR EQUIPMENT
- HW HOT WATER OUTLET
- LS/R2 LIGHT SWITCH - ROOM, 2 WAY
- OP OBSERVATION PANEL
- SS STAINLESS STEEL
- SK4 FLOOR VINYL COVERED SKIRTING
- V4 VINYL FLOORING - SAFETY
- WB WHITEBOARD



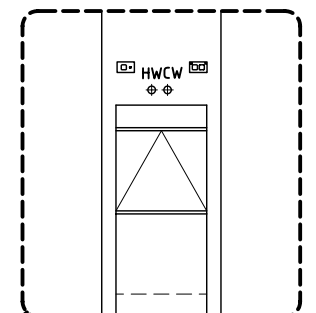
**PLAN**



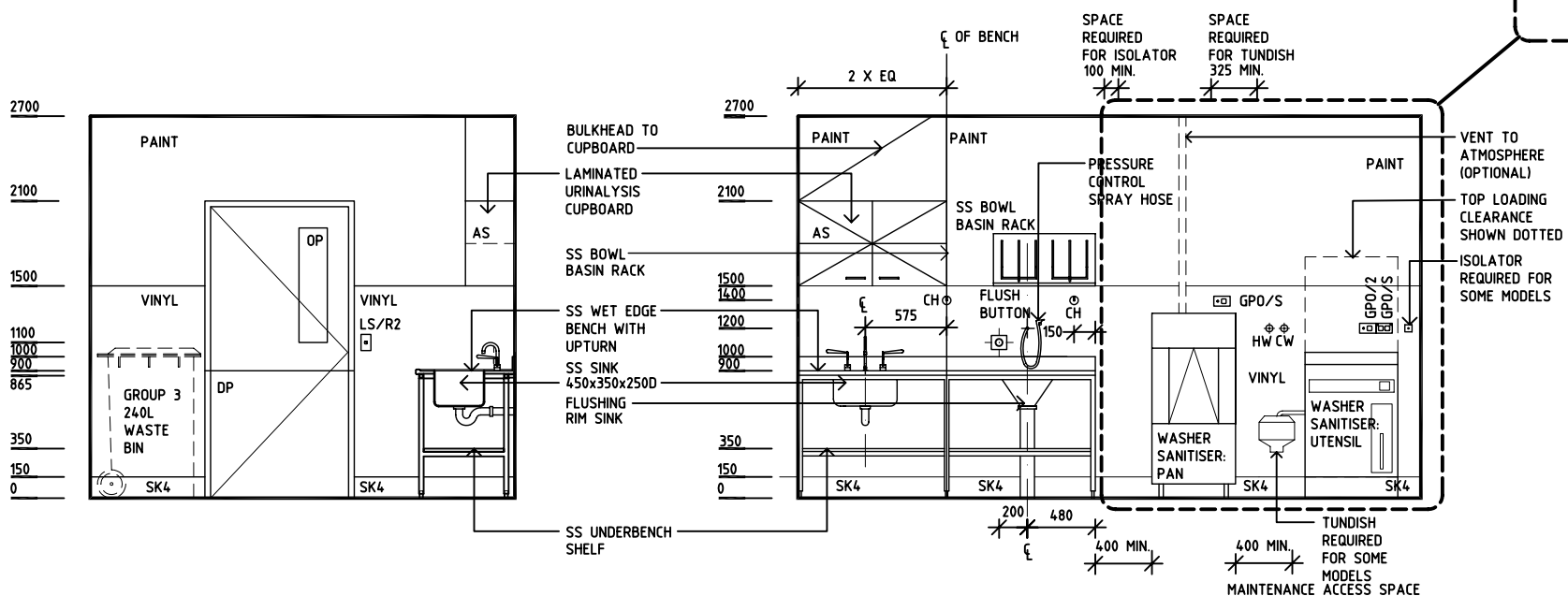
**ELEVATION 1**



**ELEVATION 2**



OPTIONAL WASHER SANITISER: PAN & UTENSIL COMBINED



**ELEVATION 3**

**ELEVATION 4**

REV	DESCRIPTION	DATE	BY	REV	DESCRIPTION	DATE	BY	REV	DESCRIPTION	DATE	BY
1	FIRST ISSUE	25.07.05	AL								
2	2008 AUS HFG REVIEW, LAYOUT RE-ARRANGEMENT	10.12.08	MT								



DESIGNED	APPROVED	SCALE(S)	ZONE(S)
AL	DB	150 in A3	
CAD FILE NAME DTUR-14		PAPER DRAWING ID DTUR-14	