

AUSTRALASIAN HFG STANDARD COMPONENTS

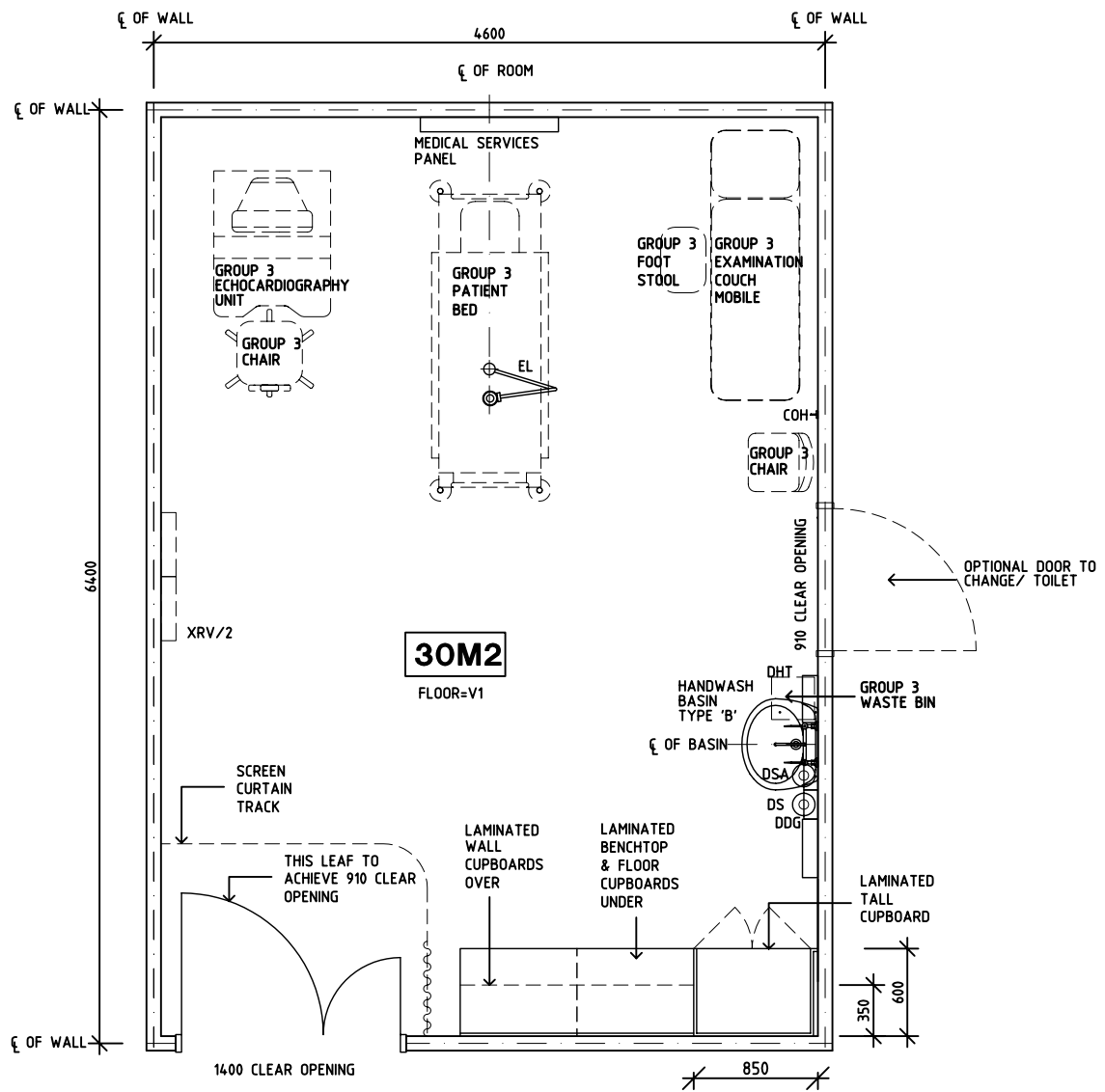
Room Layout Sheet

Room Name **Trans-oesophageal/Echocardiogram**

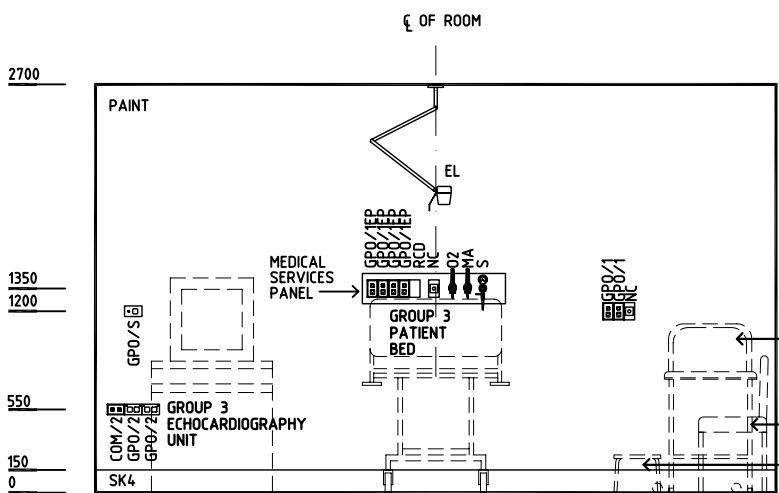
RLS Room Code **ECHO**

RDS Room Code **ECHO**

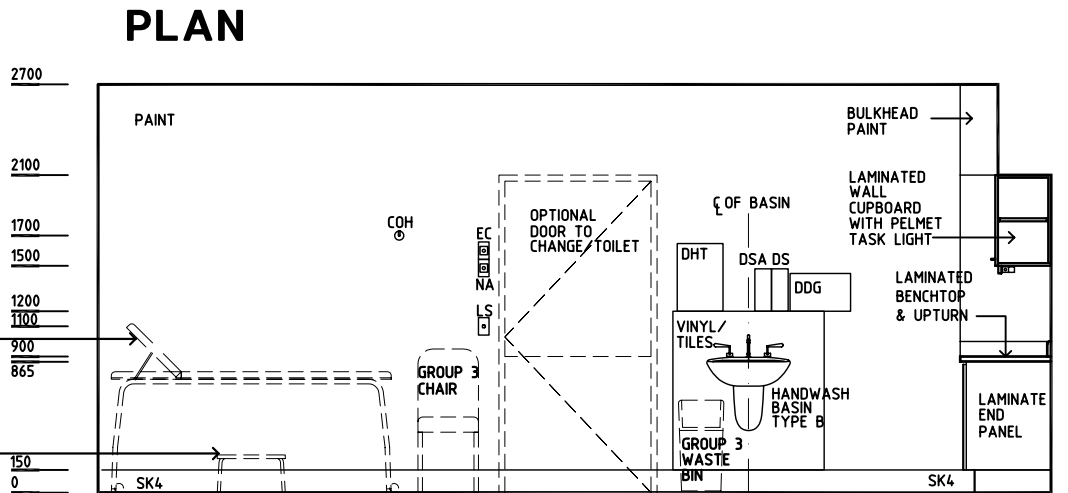
- AS ADJUSTABLE SHELF
- COH COAT HOOK
- COM/2 COMMUNICATIONS/ DATA OUTLET - DOUBLE
- DDG DISPENSER - DISPOSABLE GLOVES
- DHT DISPENSER - HAND TOWEL
- DS DISPENSER - SOAP
- DSA DISPENSER - SOAP ANTISEPTIC
- DP DOOR AND DOOR FRAME PROTECTION
- EC EMERGENCY CALL
- EL EXAMINATION LIGHT
- GPO/1 GENERAL PURPOSE OUTLET - SINGLE
- GPO/2 GENERAL PURPOSE OUTLET - DOUBLE
- GPO/S SPECIAL POWER OUTLET - SINGLE
- LS/P LIGHT SWITCH - PELMET TASK LIGHT
- LS/R LIGHT SWITCH - ROOM
- NA NURSE ASSIST CALL
- NC PATIENT/NURSE CALL
- SK4 FLOOR VINYL COVED SKIRTING
- V1 VINYL FLOORING, STANDARD
- XRV/2 X-RAY VIEWER, 2 SCREENS



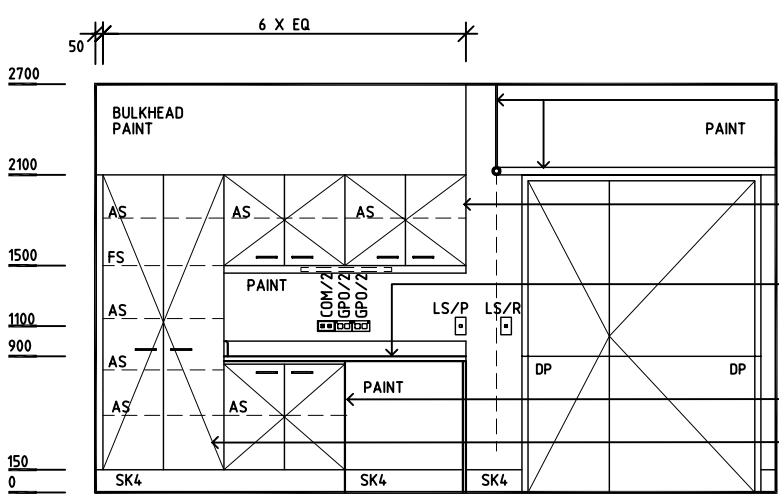
PLAN



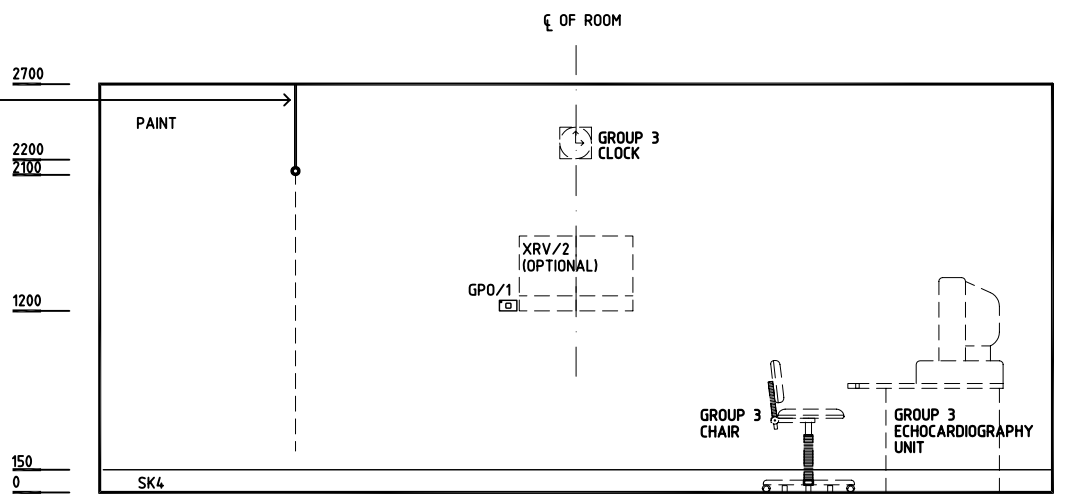
ELEVATION 1



ELEVATION 2



ELEVATION 3



ELEVATION 4

REV	DESCRIPTION	DATE	BY	REV	DESCRIPTION	DATE	BY	REV	DESCRIPTION	DATE	BY
1	FIRST ISSUE	15.07.05	AL								
2	GENERAL REVISION	08.06.07	KC								

	HCAMC in association with 	HPI	DESIGNED	APPROVED	SCALE(S)	ZONE(S)
			AL	DB	1:50 in A3	
			CAD FILE NAME ECHO		PAPER DRAWING ID ECHO	