

AUSTRALASIAN HFG STANDARD COMPONENTS

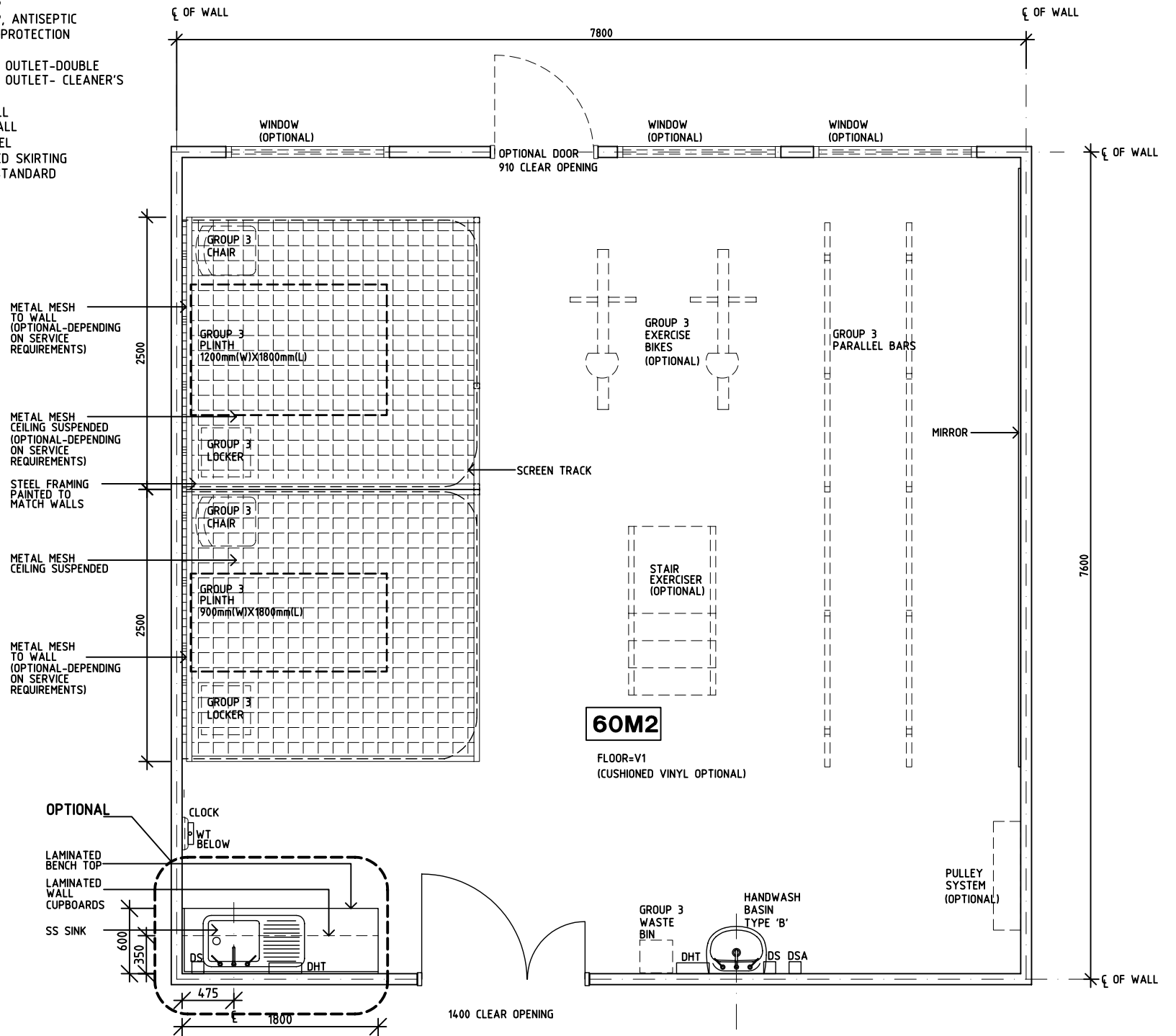
Room Layout Sheet

Room Name **Gymnasium - 60m2**

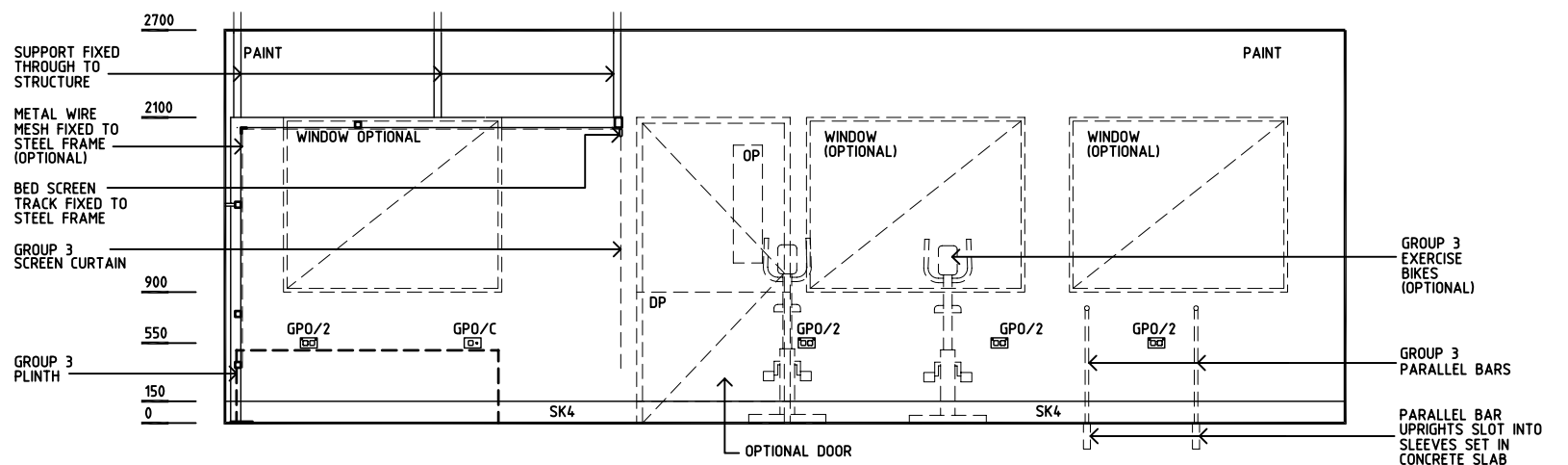
RLS Room Code **GYAH-60**

RDS Room Code **GYAH-60**

- AS ADJUSTABLE SHELF
- COM/2 COMMUNICATIONS OUTLET - DOUBLE
- DDG DISPENSER - DISPOSABLE GLOVE
- DHT DISPENSER - HAND TOWEL
- DS DISPENSER - SOAP
- DSA DISPENSER - SOAP, ANTISEPTIC
- DP DOOR AND FRAME PROTECTION
- EC EMERGENCY CALL
- GPO/2 GENERAL PURPOSE OUTLET-DOUBLE
- GPO/C GENERAL PURPOSE OUTLET-CLEANER'S
- LS LIGHT SWITCH
- NA NURSE ASSIST CALL
- NC PATIENT/NURSE CALL
- OP OBSERVATION PANEL
- SK4 FLOOR VINYL COVERED SKIRTING
- V1 VINYL FLOORING, STANDARD
- WT WALL TELEPHONE



PLAN



ELEVATION 1

REV	DESCRIPTION	DATE	BY	REV	DESCRIPTION	DATE	BY	REV	DESCRIPTION	DATE	BY
1	FIRST ISSUE	21.7.05	AL								
2	SECOND ISSUE	21.4.06	ADS								



HCAMC in association with **UNSW**

HPI

DESIGNED	APPROVED	SCALE(S)	ZONE(S)
CC/AL/JH	DB	150 in A3	
CAD FILE NAME GYAH-60		PAPER DRAWING ID GYAH-60a	

AUSTRALASIAN HFG STANDARD COMPONENTS

Room Layout Sheet

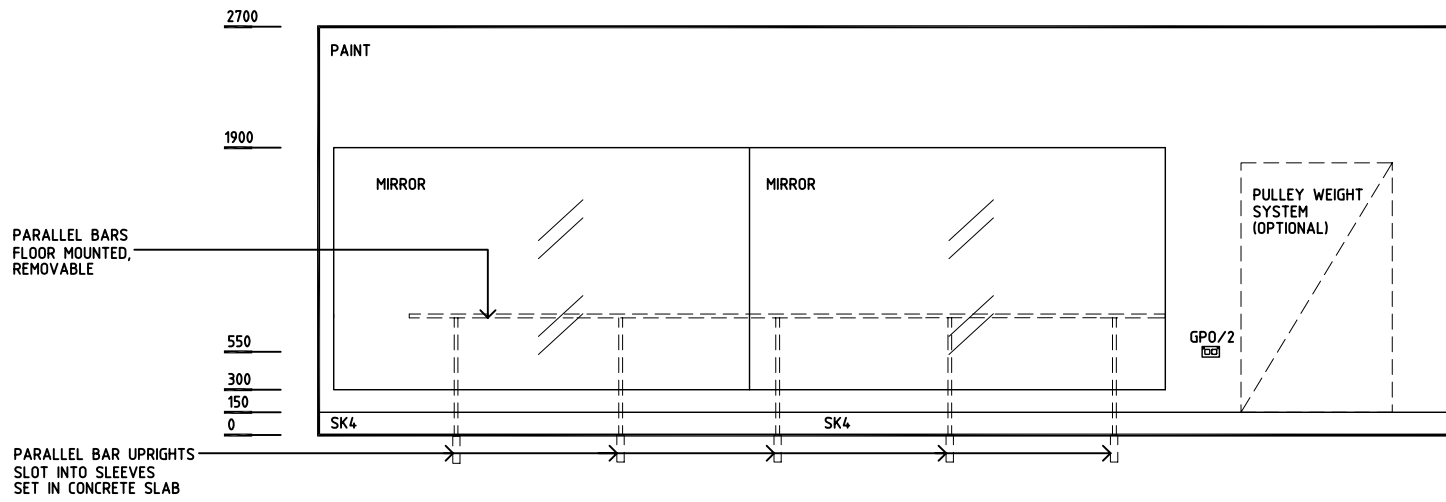
Room Name

Gymnasium - 60m2

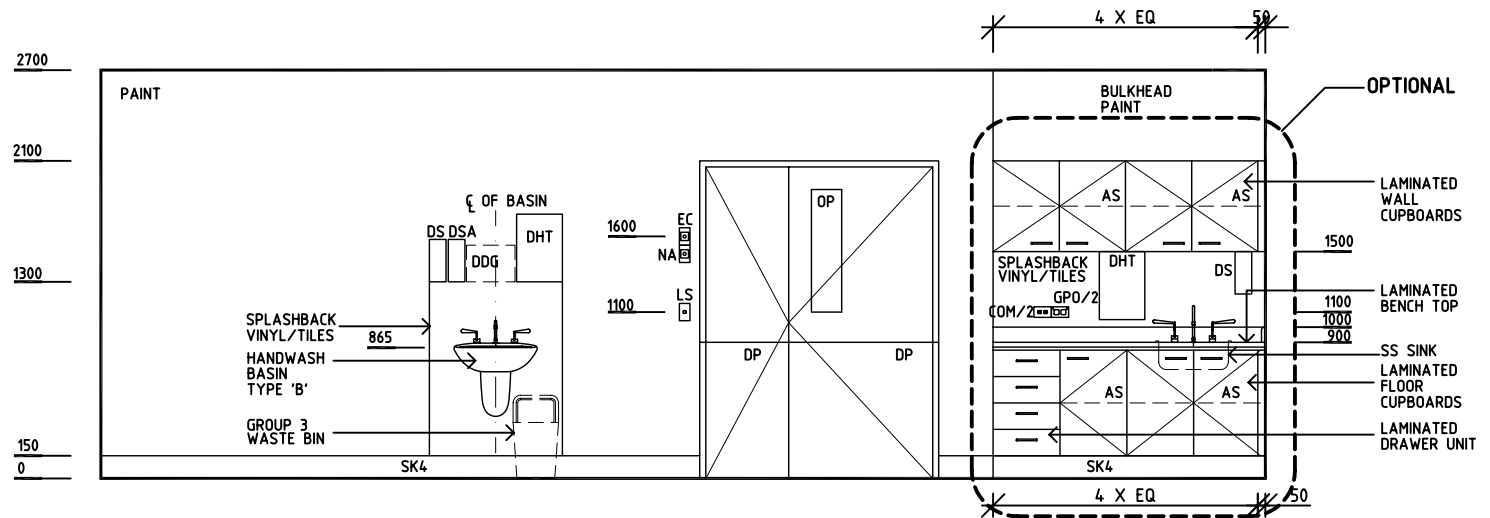
RLS Room Code GYAH-60

RDS Room Code GYAH-60

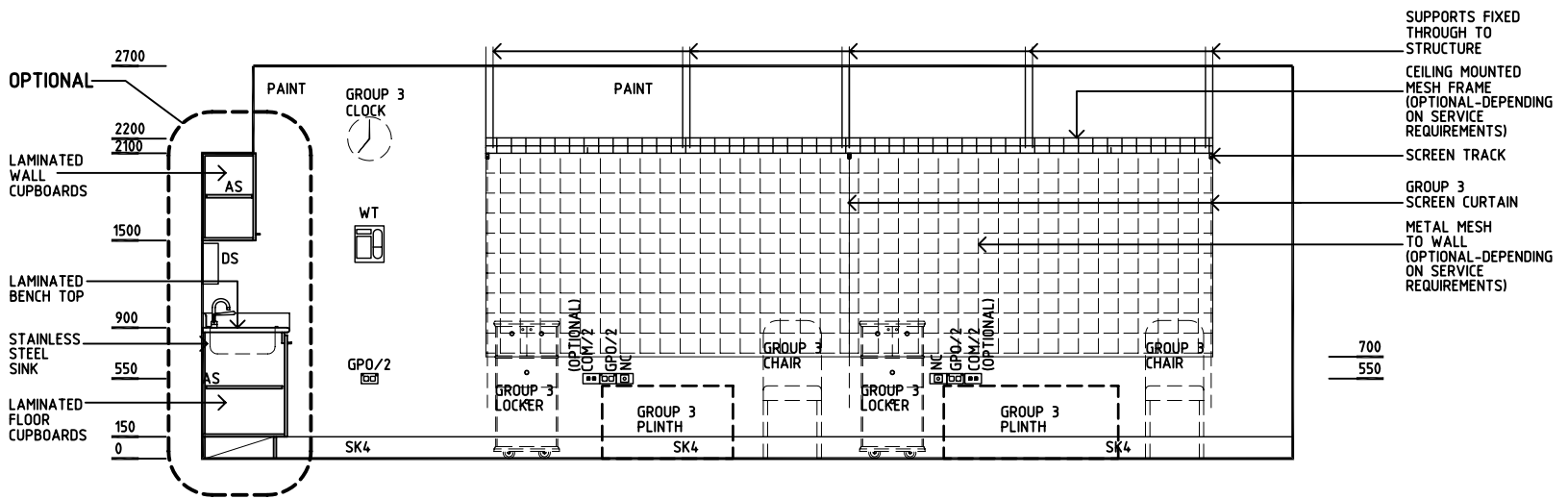
- AS ADJUSTABLE SHELF
- COM/2 COMMUNICATIONS OUTLET - DOUBLE
- DDG DISPENSER - DISPOSABLE GLOVE
- DHT DISPENSER - HAND TOWEL
- DS DISPENSER - SOAP
- DSA DISPENSER - SOAP, ANTISEPTIC
- DP DOOR AND FRAME PROTECTION
- EC EMERGENCY CALL
- GPO/2 GENERAL PURPOSE OUTLET-DOUBLE
- GPO/C GENERAL PURPOSE OUTLET- CLEANER'S
- LS LIGHT SWITCH
- NA NURSE ASSIST CALL
- NC PATIENT/NURSE CALL
- OP OBSERVATION PANEL
- SK4 FLOOR VINYL COVERED SKIRTING
- V1 VINYL FLOORING, STANDARD
- WT WALL TELEPHONE



ELEVATION 2



ELEVATION 3



ELEVATION 4

REV	DESCRIPTION	DATE	BY	REV	DESCRIPTION	DATE	BY	REV	DESCRIPTION	DATE	BY
1	FIRST ISSUE	21.7.05	AL								
2	SECOND ISSUE	21.4.06	ADS								

	 in association with 	HPI	DESIGNED	APPROVED	SCALE(S)	ZONE(S)
			CC/AL/JH	DB	150 in A3	
			CAD FILE NAME		PAPER DRAWING ID	
GYAH-60		GYAH-60b				