

# AUSTRALASIAN HFG STANDARD COMPONENTS

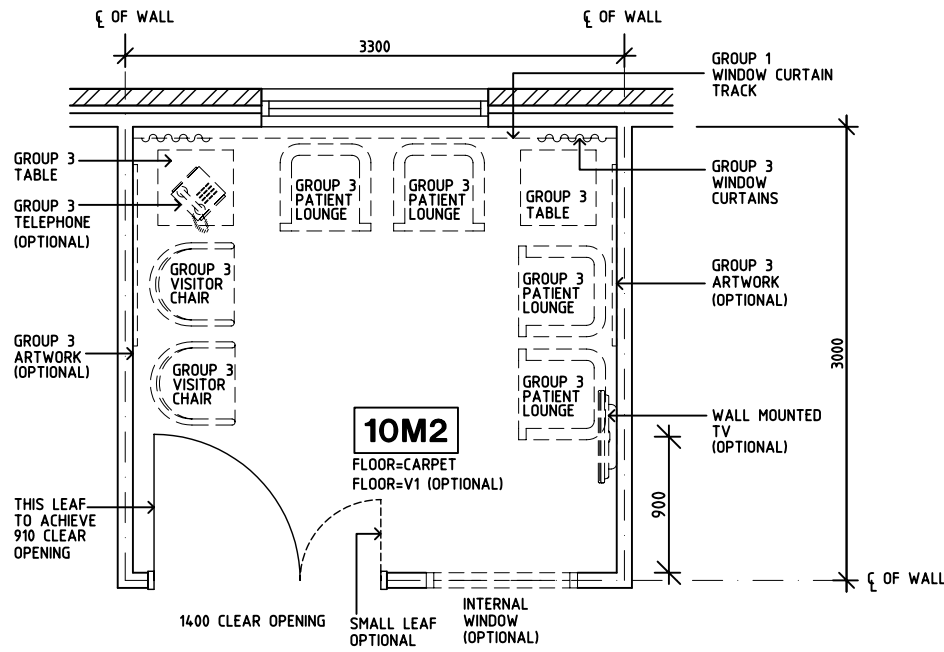
Room Layout Sheet

Room Name Lounge - Patient, 10m2

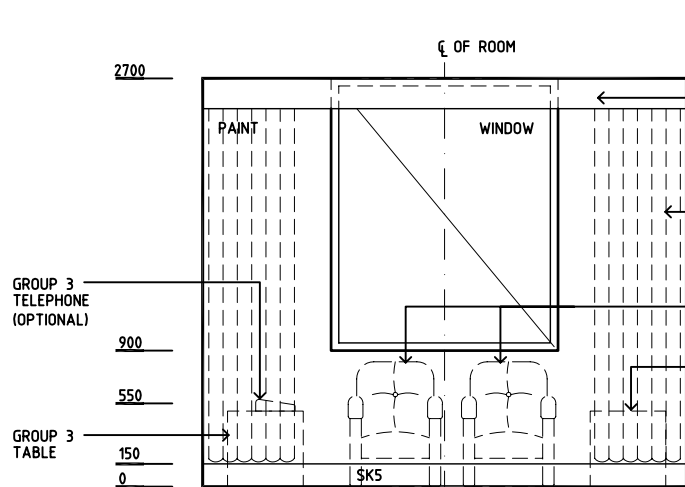
RLS Room Code LNPT-10

RDS Room Code LNPT-10

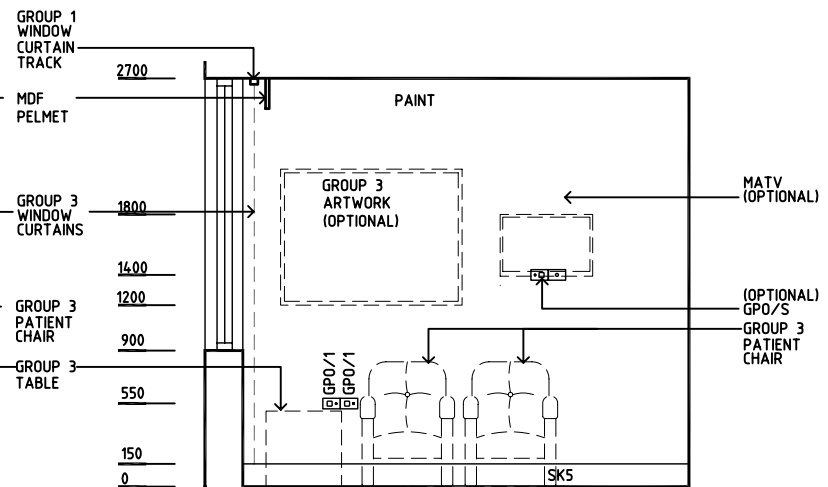
- COM/2 COMMUNICATIONS OUTLET - DOUBLE
- DP DOOR AND DOOR FRAME PROTECTION
- EC EMERGENCY CALL
- GPO/1 GENERAL PURPOSE OUTLET - SINGLE
- GPO/C GENERAL PURPOSE OUTLET - CLEANER
- GPO/S GENERAL PURPOSE OUTLET - SPECIAL
- LS LIGHT SWITCH
- MATV TV CONNECTION
- NA NURSE ASSIST CALL
- NC PATIENT NURSE CALL
- RCD RESIDUAL CURRENT DEVICE
- SK5 VINYL FEATHER EDGE SKIRTING
- V1 VINYL FLOORING, STANDARD



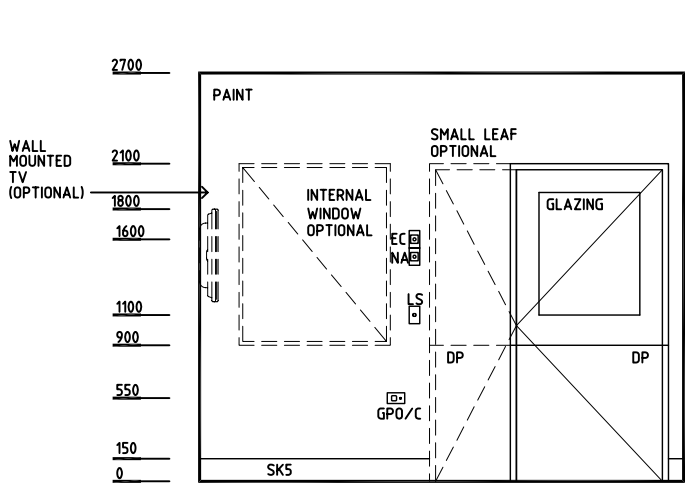
PLAN



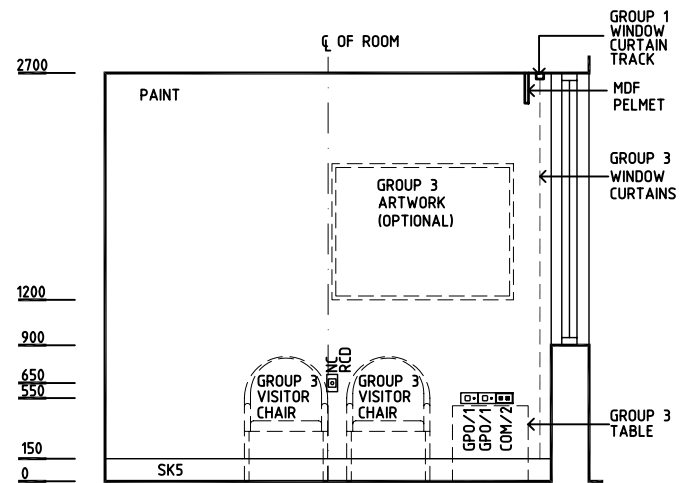
ELEVATION 1



ELEVATION 2



ELEVATION 3



ELEVATION 4

REV	DESCRIPTION	DATE	BY	REV	DESCRIPTION	DATE	BY	REV	DESCRIPTION	DATE	BY
1	FIRST ISSUE	27.6.05	EH								
2	SECOND ISSUE	18.4.06	ADS								
3	2008 AUS HFG REVIEW, GENERAL REVISION	10.12.08	CT								



DESIGNED	APPROVED	SCALE(S)	ZONE(S)
AL/HS/JH	DB	150 in A3	
CAD FILE NAME LNPT-10		PAPER DRAWING ID LNPT-10	

This document is for advisory purpose only