

AUSTRALASIAN HFG STANDARD COMPONENTS

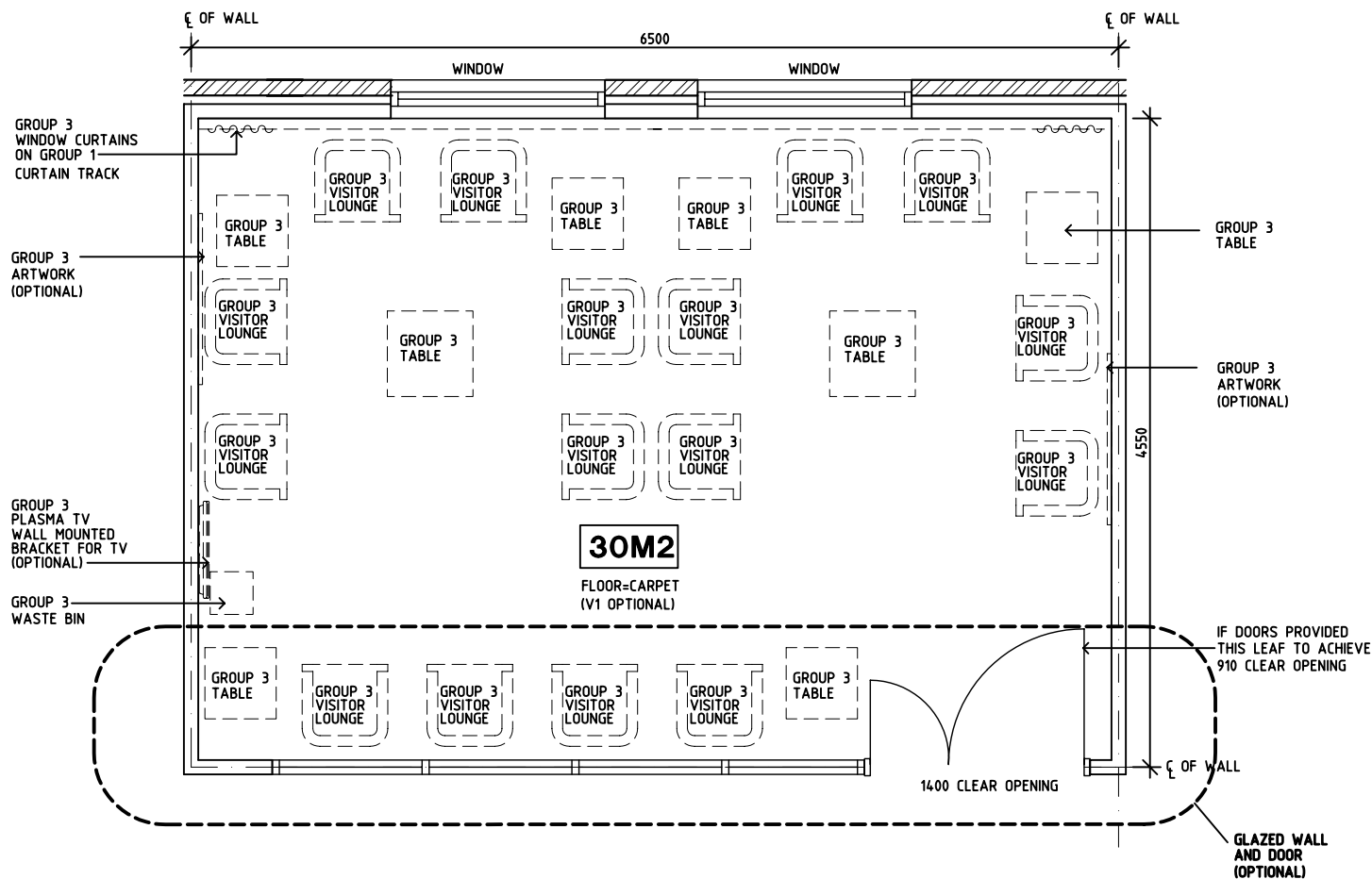
Room Layout Sheet

Room Name Lounge - Patient, 30m2

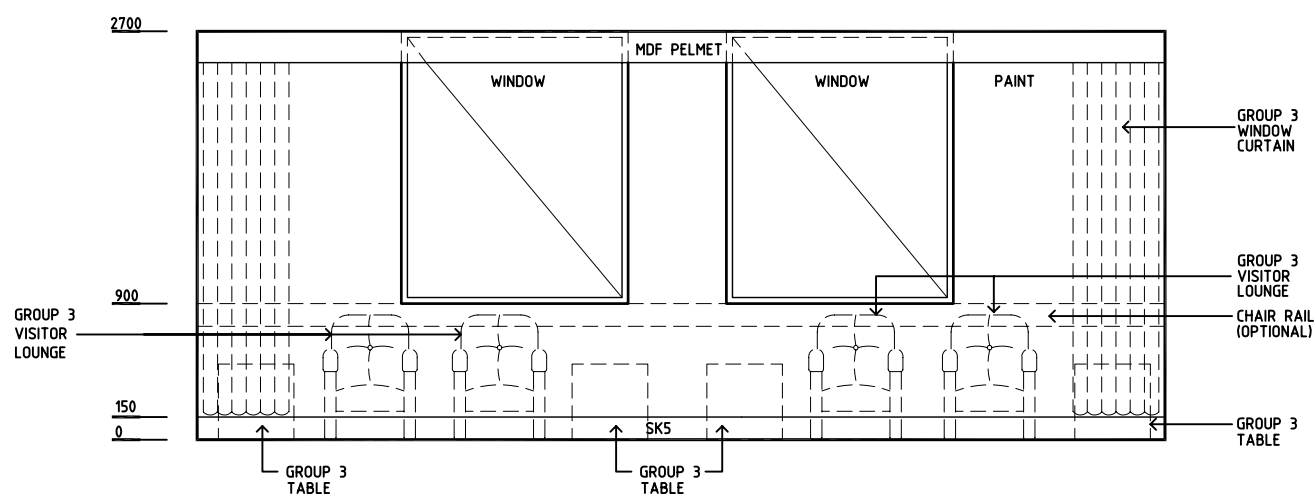
RLS Room Code LNPT-30

RDS Room Code LNPT-30

- COM/2 COMMUNICATIONS OUTLET - DOUBLE
- DP DOOR AND DOOR FRAME PROTECTION
- EC EMERGENCY CALL
- GPO/1 GENERAL PURPOSE OUTLET - SINGLE
- GPO/C GENERAL PURPOSE OUTLET - CLEANER'S
- GPO/S GENERAL PURPOSE OUTLET - SPECIAL
- LS LIGHT SWITCH
- MATV TV CONNECTION
- NA NURSE ASSIST CALL
- NC PATIENT NURSE CALL
- RCD RESIDUAL CURRENT DEVICE
- SK5 VINYL FEATHER EDGE SKIRTING
- V1 FLOOR VINYL - STANDARD



PLAN



ELEVATION 1

REV	DESCRIPTION	DATE	BY	REV	DESCRIPTION	DATE	BY	REV	DESCRIPTION	DATE	BY
1	FIRST ISSUE	11.7.05	BJ								
2	SECOND ISSUE	18.4.06	ADS								
3	2008 AUS HFG REVIEW, GENERAL REVISIONS	10.12.08	CT								

			DESIGNED	APPROVED	SCALE(S)	ZONE(S)
			AL/HS/JH	DB	150 in A3	
CAD FILE NAME			PAPER DRAWING ID			
LNPT-30			LNPT-30a			

AUSTRALASIAN HFG STANDARD COMPONENTS

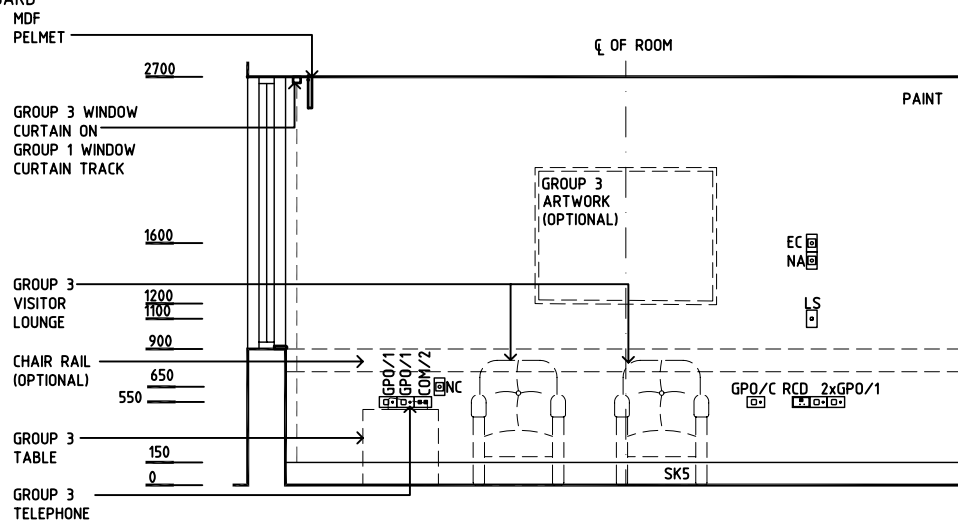
Room Layout Sheet

Room Name **Lounge - Patient, 30m2**

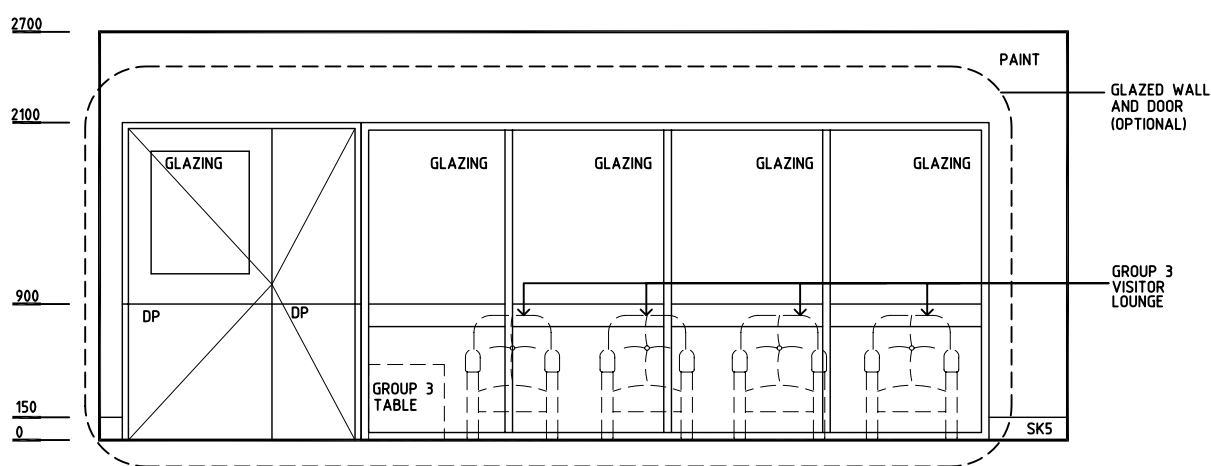
RLS Room Code **LNPT-30**

RDS Room Code **LNPT-30**

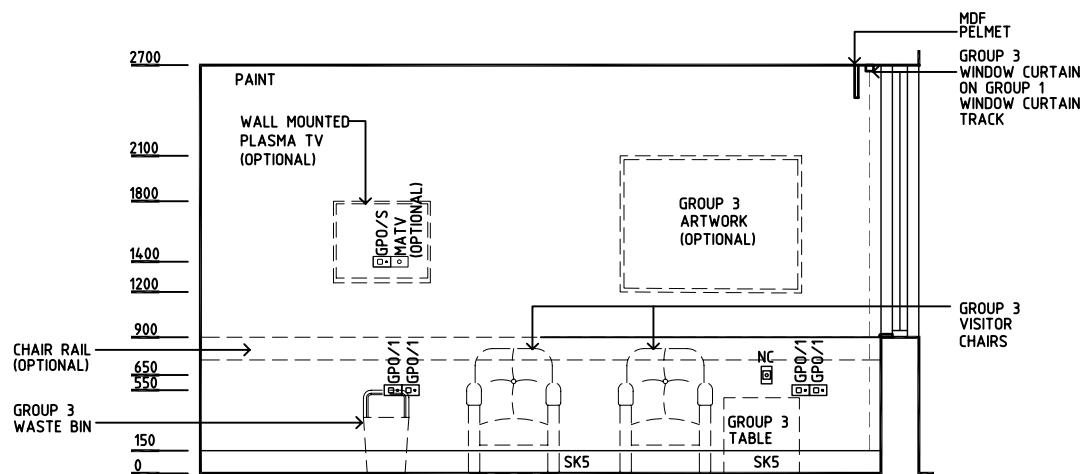
- COM/2 COMMUNICATIONS OUTLET - DOUBLE
- DP DOOR AND DOOR FRAME PROTECTION
- EC EMERGENCY CALL
- GPO/1 GENERAL PURPOSE OUTLET - SINGLE
- GPO/C GENERAL PURPOSE OUTLET - CLEANER'S
- GPO/S GENERAL PURPOSE OUTLET - SPECIAL
- LS LIGHT SWITCH
- MATV TV CONNECTION
- NA NURSE ASSIST CALL
- NC PATIENT NURSE CALL
- RCD RESIDUAL CURRENT DEVICE
- SK5 VINYL FEATHER EDGE SKIRTING
- V1 FLOOR VINYL - STANDARD



ELEVATION 2



ELEVATION 3



ELEVATION 4

REV	DESCRIPTION	DATE	BY	REV	DESCRIPTION	DATE	BY	REV	DESCRIPTION	DATE	BY
1	FIRST ISSUE	11.7.05	BJ								
2	SECOND ISSUE	18.4.06	ADS								
3	2008 AUS HFG REVIEW, GENERAL REVISIONS	10.12.08	CT								

			DESIGNED	APPROVED	SCALE(S)	ZONE(S)
			AL/HS/JH	DB	150 in A3	
CAD FILE NAME			PAPER DRAWING ID			
LNPT-30			LNPT-30b			