

# AUSTRALASIAN HFG STANDARD COMPONENTS

Room Layout Sheet

Room Name **Patient Bay - Critical, 24m<sup>2</sup>**

RLS Room Code **PBC-24**

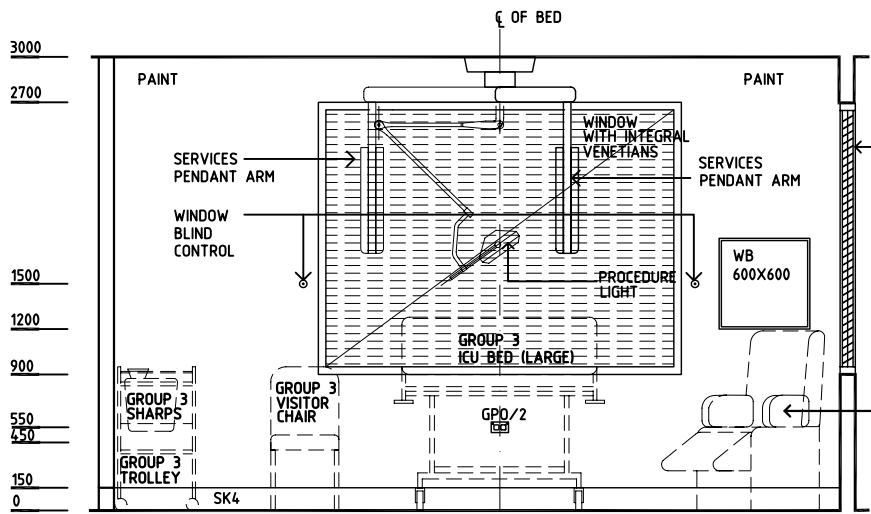
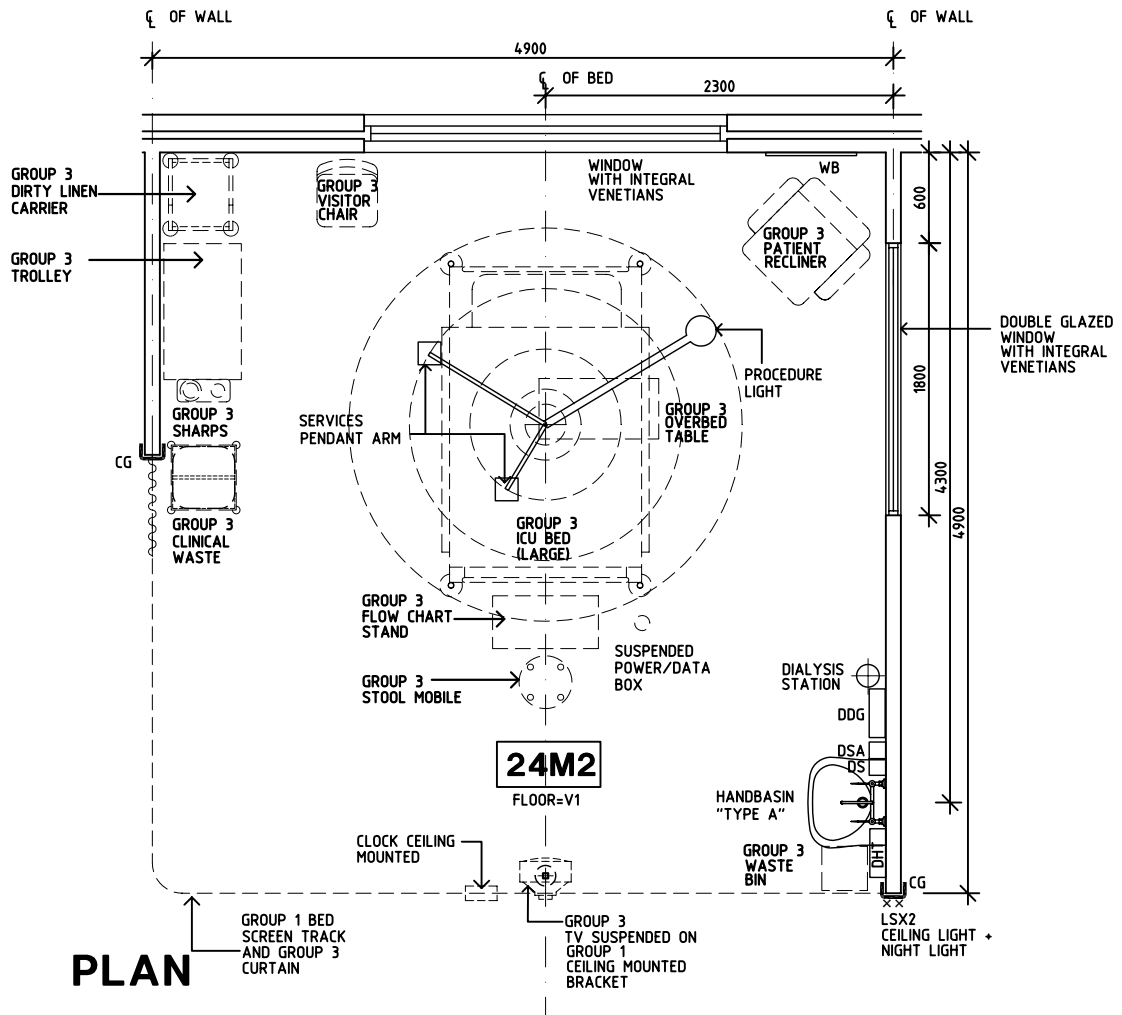
RDS Room Code **PBC-24**

COM/2  
CG  
CP  
DDG  
DGL  
DHT  
DSA  
DS  
GPO/1  
GPO/1 EP  
GPO/2 EP  
GPO/2  
GPO/C  
LS  
RCD  
RO  
SK4  
V1  
WB

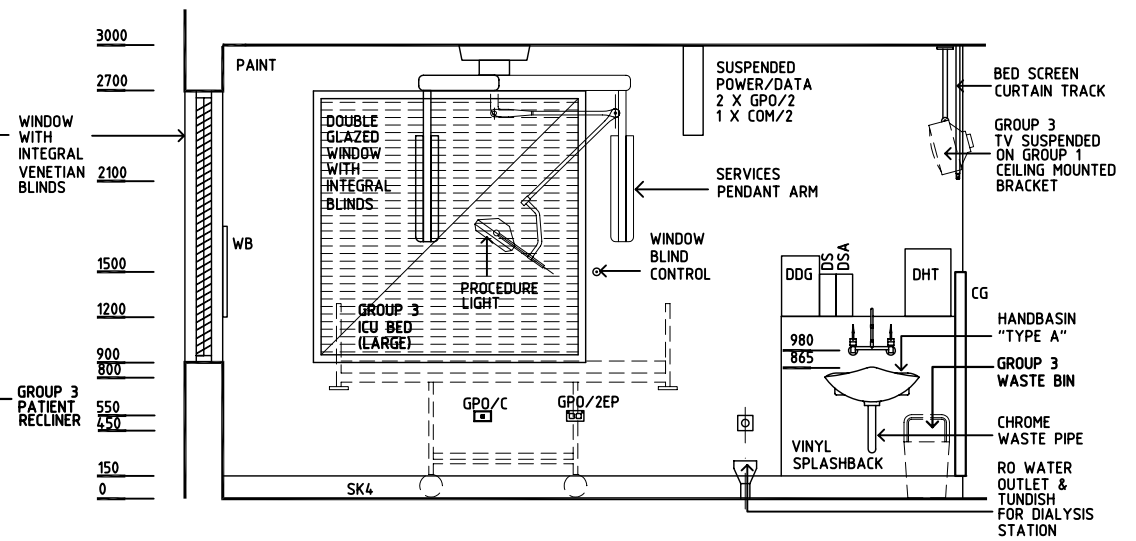
COMMUNICATION OUTLET - DOUBLE  
CORNER GUARD  
CHROME PLATED  
DISPENSER - DISPOSABLE GLOVES  
DOUBLE GLAZING  
DISPENSER - HAND TOWEL  
DISPENSER - SOAP ANTISEPTIC  
DISPENSER - SOAP  
GENERAL PURPOSE OUTLET - SINGLE  
EMERGENCY POWER - SINGLE  
EMERGENCY POWER - DOUBLE  
GENERAL PURPOSE OUTLET - DOUBLE  
GENERAL PURPOSE OUTLET - CLEANER'S  
LIGHT SWITCH  
RESIDUAL CURRENT DEVICE  
REVERSE OSMOSIS  
FLOOR VINYL COVERED SKIRTING  
VINYL FLOORING STANDARD  
WHITEBOARD

SERVICE PENDANTS:

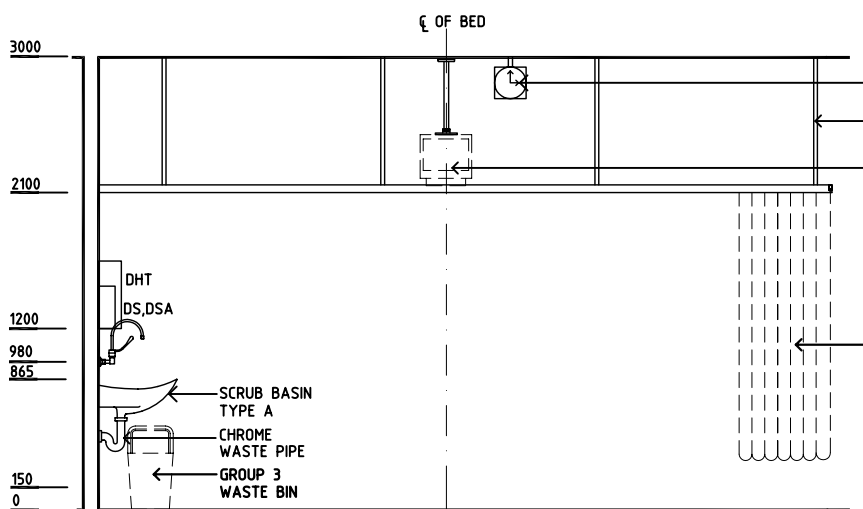
1 x EMERGENCY CALL  
1 x NURSE ASSIST CALL  
1 x PATIENT/NURSE CALL & HANDSET  
12 x GPO/1  
12 x GPO/1 EP  
4 x OXYGEN  
2 x MEDICAL AIR  
4 x SUCTION  
1 x MONITOR CONNECTION  
1 x COM/2  
1 x RCD



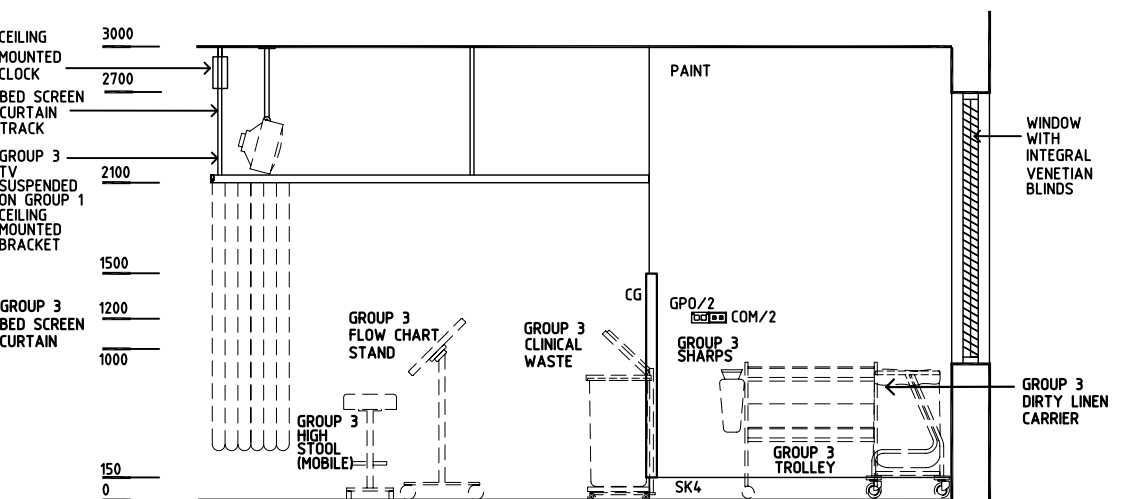
**ELEVATION 1**



**ELEVATION 2**



**ELEVATION 3**



**ELEVATION 4**

REV	DESCRIPTION	DATE	BY	REV	DESCRIPTION	DATE	BY	REV	DESCRIPTION	DATE	BY
1	FIRST ISSUE	15.07.05	JMH								

<b>Australasian HFG</b>	<b>HCAMC</b> in association with <b>UNSW</b>	<b>HPI</b>	DESIGNED	APPROVED	SCALE(S)	ZONE(S)
			CC	DB	1:50 in A3	
			CAD FILE NAME PBC-24		PAPER DRAWING ID PBC-24	