

AUSTRALASIAN HFG STANDARD COMPONENTS

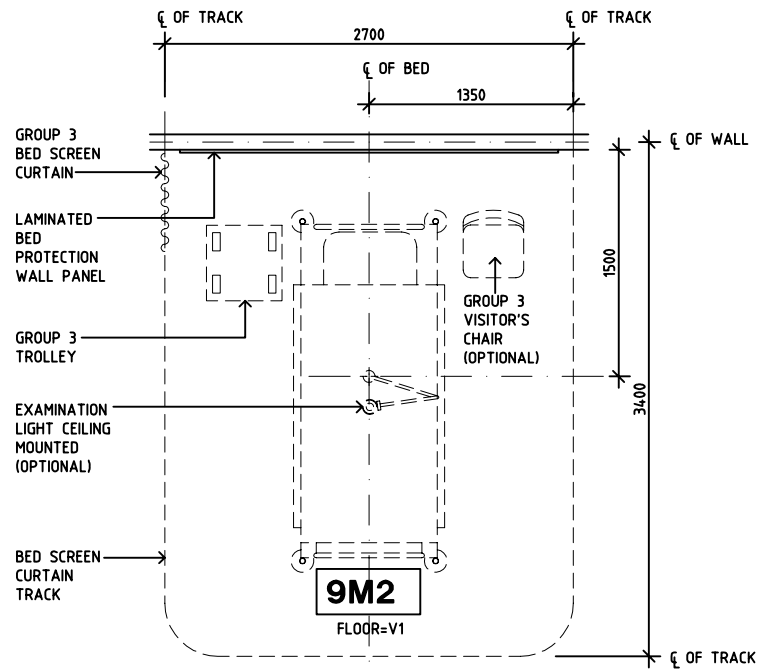
Room Layout Sheet

Room Name **Patient Bay - Holding, 9m2**

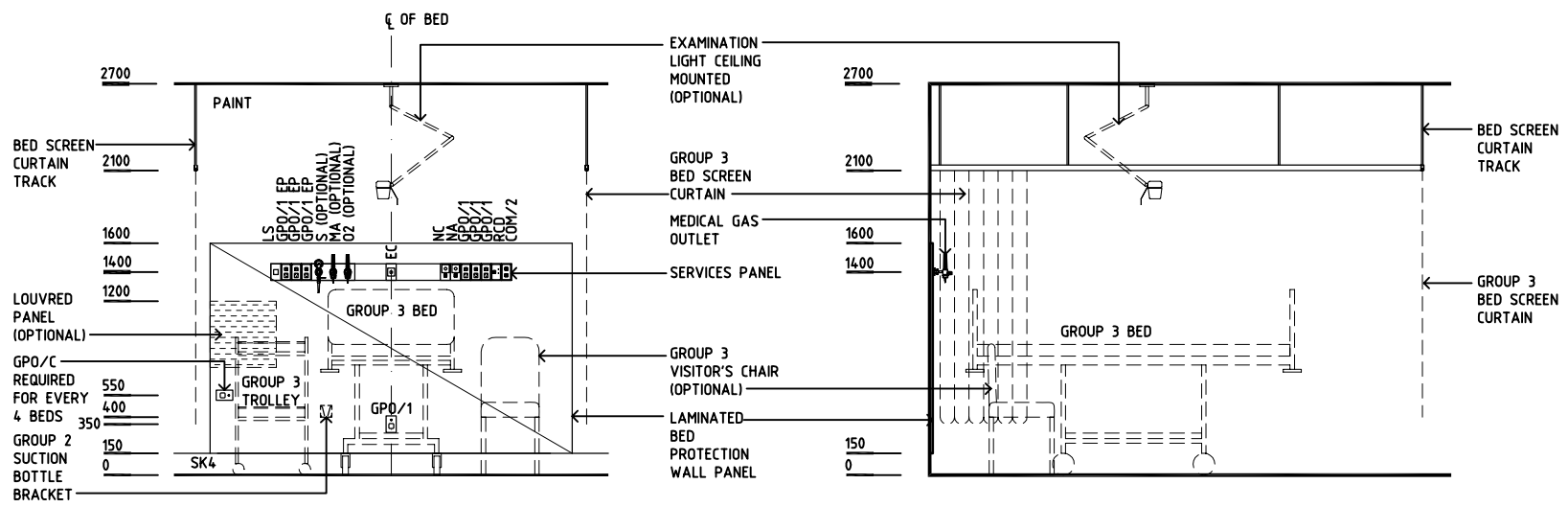
RLS Room Code **PBTR-H-9**

RDS Room Code **PBTR-H-9**

- COM/2 COMMUNICATION OUTLET - DOUBLE
- EC EMERGENCY CALL
- GPO/1 GENERAL PURPOSE OUTLET, SINGLE
- GPO/1 EP EMERGENCY POWER, SINGLE
- GPO/C GENERAL PURPOSE OUTLET, CLEANER'S
- LS LIGHT SWITCH
- MA MEDICAL AIR
- NA NURSE ASSIST CALL
- NC PATIENT/NURSE CALL
- O2 OXYGEN
- RCD RESIDUAL CURRENT DEVICE
- S SUCTION
- SK4 FLOOR VINYL COVED SKIRTING
- V1 VINYL FLOORING, STANDARD



PLAN



ELEVATION 1

ELEVATION 2

REV	DESCRIPTION	DATE	BY	REV	DESCRIPTION	DATE	BY	REV	DESCRIPTION	DATE	BY
1	FIRST ISSUE	19.11.03	CC	4	2009 AUS HFG REVIEW, GENERAL REVISIONS	10.03.09	EF				
2	GENERAL REVISIONS INCL NAME CHANGE	9.6.05	AL								
3	GENERAL REVISIONS	29.6.05	HS								

			DESIGNED	APPROVED	SCALE(S)	ZONE(S)
			CC	DB	150 in A3	
CAD FILE NAME			PAPER DRAWING ID			
PBTR-H-9			PBTR-H-9			

This document is for advisory purpose only