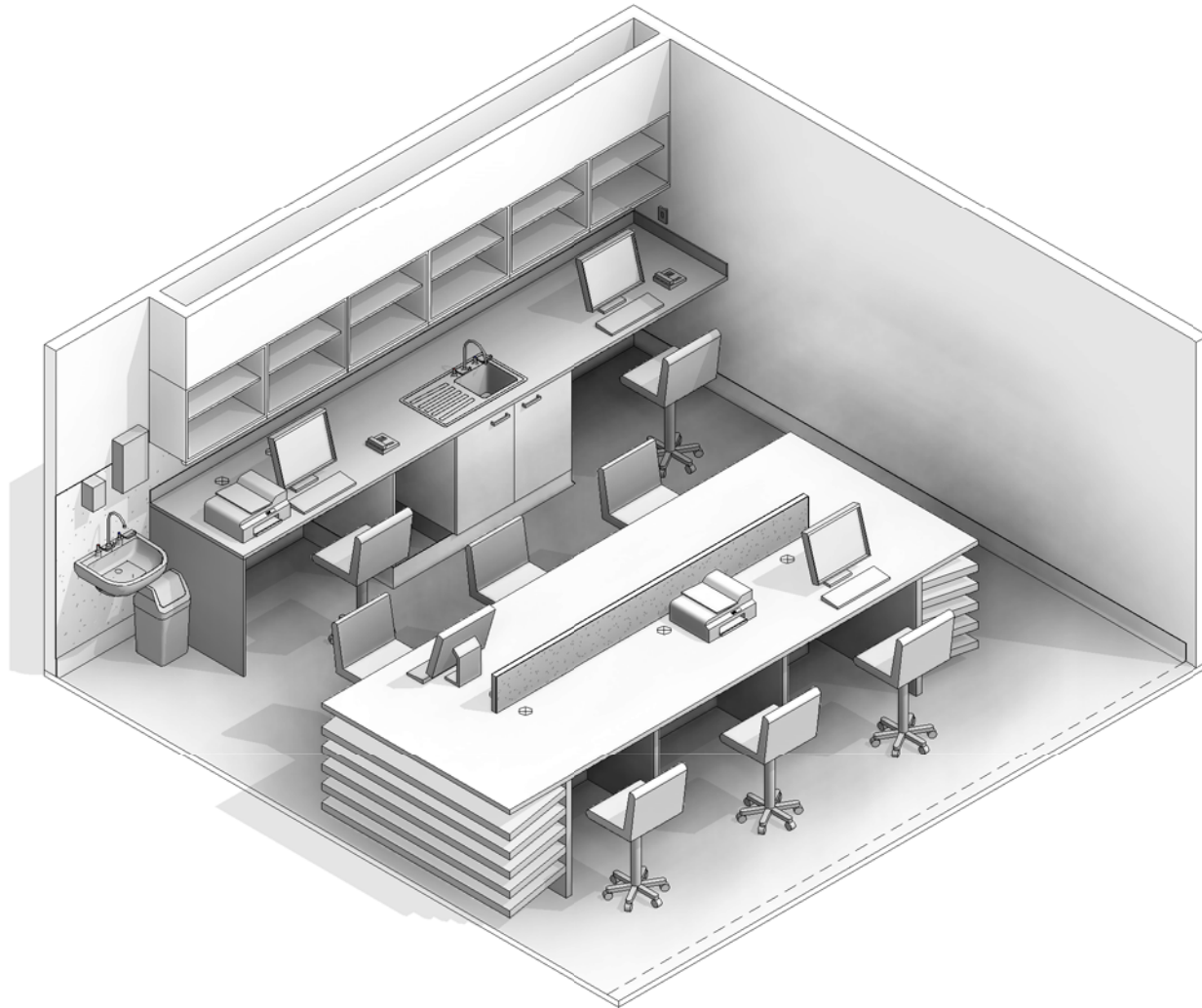


# AUSTRALASIAN HFG STANDARD COMPONENTS

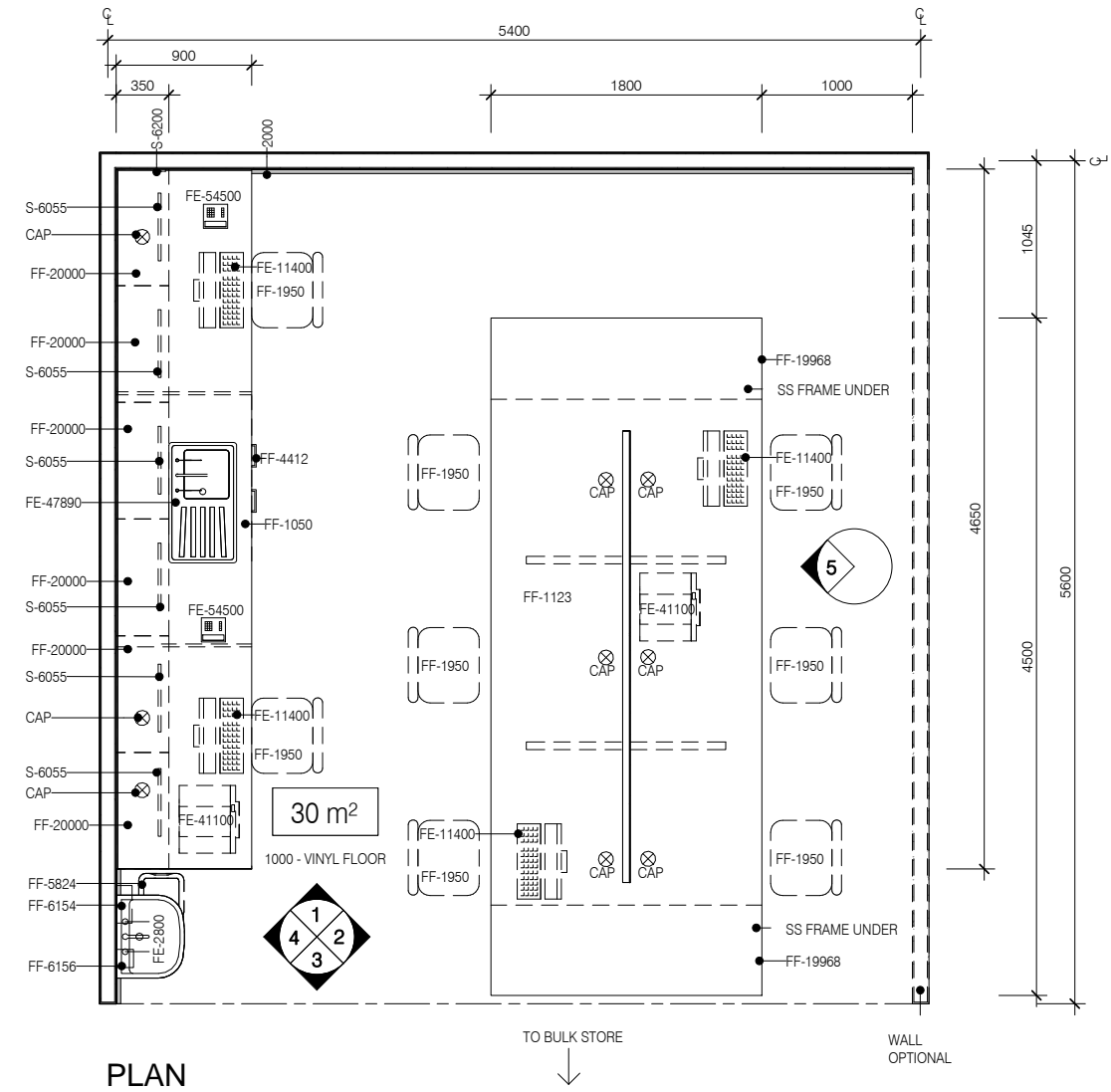
Room Layout Sheet

RLS Room Code: **ASPR-30**



BIMID	DESCRIPTION
2000	FLOOR VINYL COVERED SKIRTING
3060	WALL VINYL - 3060
FE-2800	BASIN - HANDWASH, TYPE B
FE-4045	TAP MIXER, LONG LEVER
FE-11400	COMPUTER - PC & MONITOR
FE-41100	PRINTER - NETWORKED
FE-47890	SINK WITH DRAINER, STAINLESS STEEL
FE-54500	TELEPHONE - CORDLESS
FF-1050	BENCHTOP - LAMINATE
FF-1123	BENCH LAMINATE - FREESTANDING (PHARMACY LARGE)
FF-1950	CHAIR - OFFICE ERGONOMIC - HIGH
FF-4412	CUPBOARD - UNDER BENCH DOUBLE - 1100W X 970H X 600D
FF-5824	WASTE BIN, GENERAL
FF-6154	DISPENSER - HAND TOWEL
FF-6156	DISPENSER - SOAP
FF-17360	PINBOARD - FABRIC COVERED
FF-19968	SHELVING PHARMACY STOCK FLOW
FF-20000	ADJUSTABLE SHELVES
S-1006	VOICE DATA OUTLET - DOUBLE
S-6055	SPECIAL TASK LIGHT, BUILT-IN
S-6200	LIGHT SWITCH
S-9001	GENERAL POWER OUTLET - DOUBLE

Room Name: **ASSEMBLY/ PREPARATION (PHARMACY), 30m<sup>2</sup>**



REV	DESCRIPTION	DATE
2	This RLS has been redocumented	01.03.2016

**FOR GUIDANCE**

SCALE	RLS Room Code	Room Tag	REV
1 : 50 @ A3	ASPR-30	1.029.1	2

# AUSTRALASIAN HFG STANDARD COMPONENTS

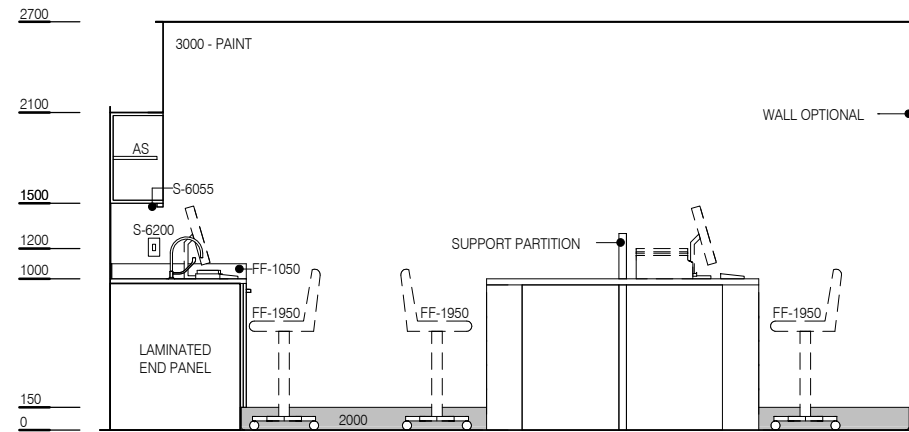
Room Layout Sheet

RLS Room Code: **ASPR-30**

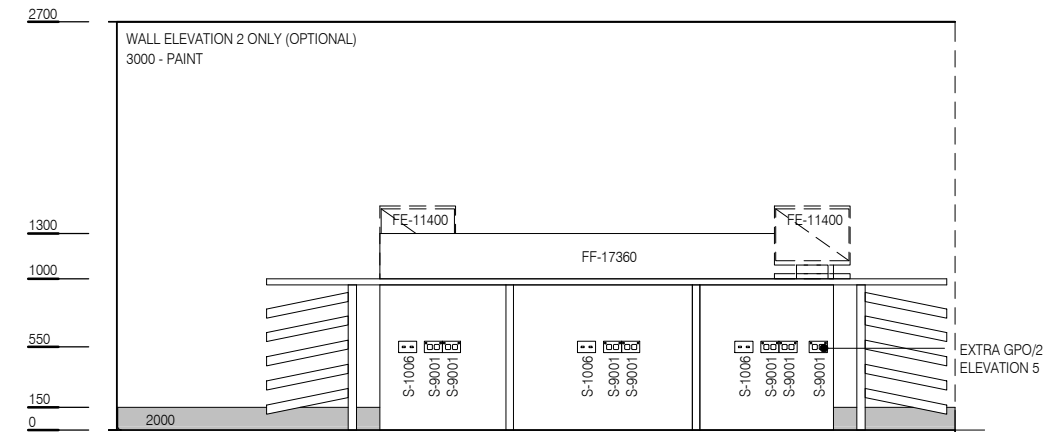
1:50 2.5m 2 1.5 1 0.5 0

Room Name: **ASSEMBLY/ PREPARATION (PHARMACY), 30m<sup>2</sup>**

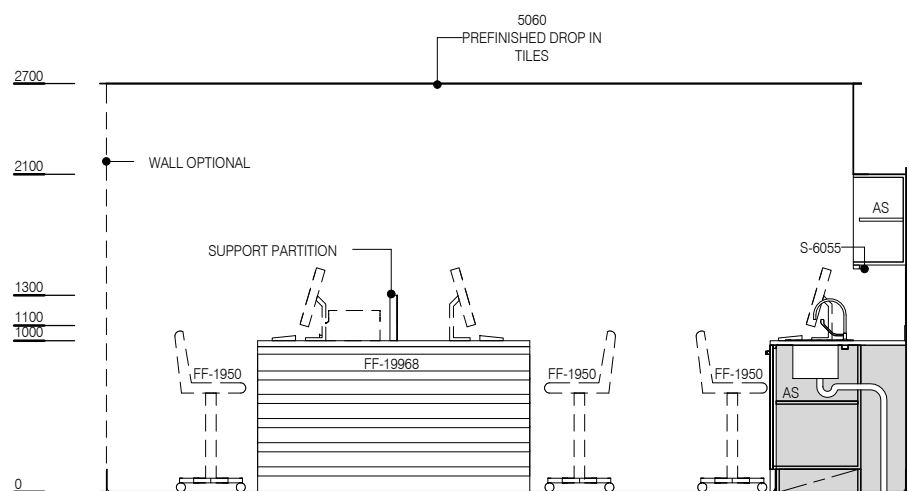
BIMID	DESCRIPTION
2000	FLOOR VINYL COVERED SKIRTING
3060	WALL VINYL - 3060
FE-2800	BASIN - HANDWASH, TYPE B
FE-4045	TAP MIXER, LONG LEVER
FE-11400	COMPUTER - PC & MONITOR
FE-41100	PRINTER - NETWORKED
FE-47890	SINK WITH DRAINER, STAINLESS STEEL
FE-54500	TELEPHONE - CORDLESS
FF-1050	BENCHTOP - LAMINATE
FF-1123	BENCH LAMINATE - FREESTANDING (PHARMACY LARGE)
FF-1950	CHAIR - OFFICE ERGONOMIC - HIGH
FF-4412	CUPBOARD - UNDER BENCH DOUBLE - 1100W X 970H X 600D
FF-5824	WASTE BIN, GENERAL
FF-6154	DISPENSER - HAND TOWEL
FF-6156	DISPENSER - SOAP
FF-17360	PINBOARD - FABRIC COVERED
FF-19968	SHELVING PHARMACY STOCK FLOW
FF-20000	ADJUSTABLE SHELVES
S-1006	VOICE DATA OUTLET - DOUBLE
S-6055	SPECIAL TASK LIGHT, BUILT-IN
S-6200	LIGHT SWITCH
S-9001	GENERAL POWER OUTLET - DOUBLE



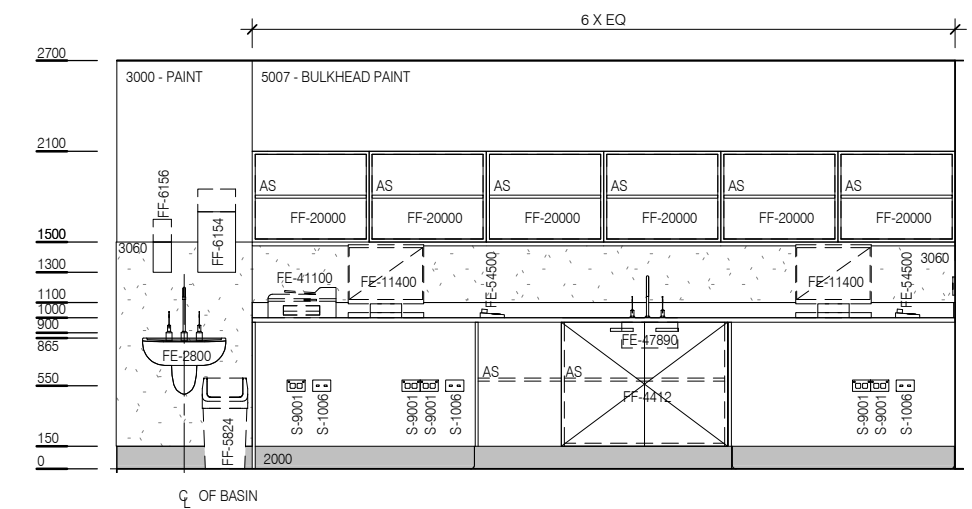
**ELEVATION 1**



**ELEVATION 2+ 5 SIMILAR (MIRRORED)**



**ELEVATION 3**



**ELEVATION 4**



REV	DESCRIPTION	DATE
2	This RLS has been redocumented	01.03.2016

**FOR GUIDANCE**

SCALE	RLS Room Code	Room Tag	REV
1 : 50 @ A3	ASPR-30	1.029.2	2