

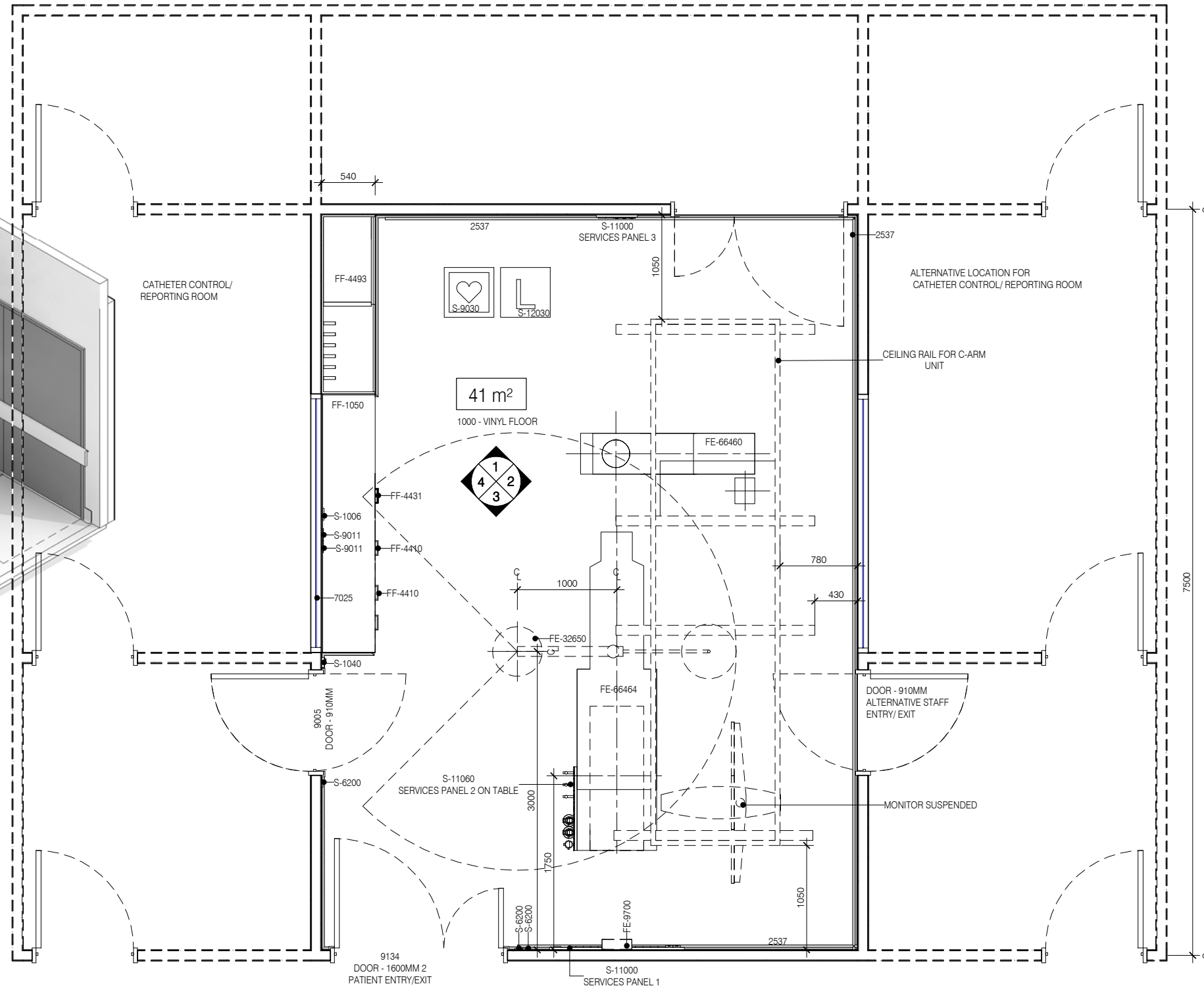
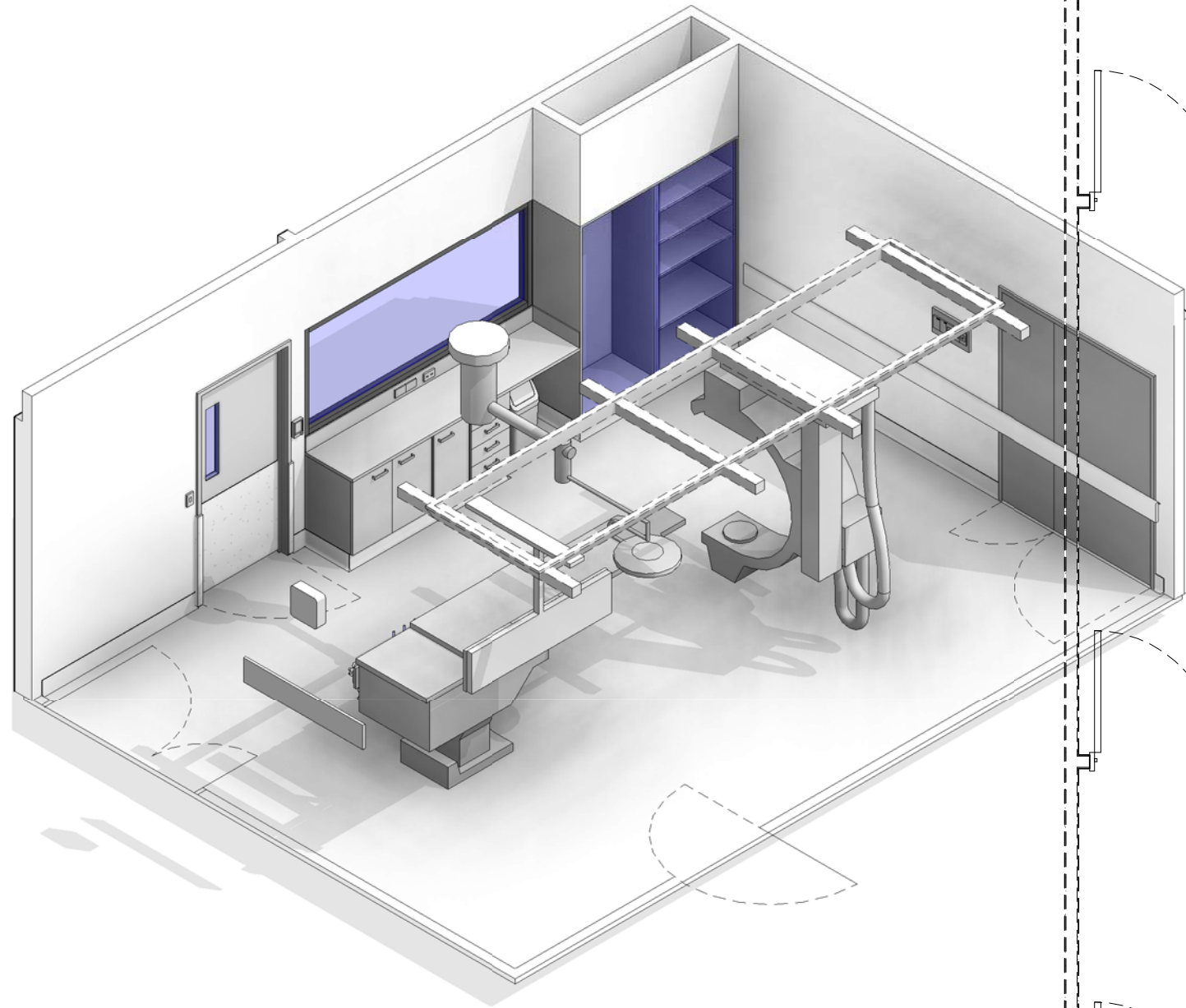
# AUSTRALASIAN HFG STANDARD COMPONENTS

Room Layout Sheet

RLS Room Code: **CLAB**

1:50 2.5m 2 1.5 1 0.5 0

Room Name: **CATHETER LABORATORY PROCEDURE ROOM**



**PLAN**

BIMID	DESCRIPTION
2000	FLOOR VINYL COVERED SKIRTING
2537	WALL PROTECTION - CRASH RAIL - 2537
7025	OBSERVATION LEAD LINED - RADIATION WINDOW
8010	DOOR PROTECTION
8040	DOOR PROTECTION - FRAME
FE-9700	CLOCK - ANALOGUE, ELECTRIC
FE-32650	LIGHT - OPERATING, SINGLE, 550Ø
FE-36052	MONITOR - CARDIAC -SUSPENDED
FE-66460	IMG - CATHETER LAB IMAGING UNIT
FE-66464	IMG - CATHETERISATION TABLE
FF-150	AIR FLOWMETER
FF-1050	BENCHTOP - LAMINATE
FF-1465	BRACKET - SUCTION BOTTLE
FF-4410	CUPBOARD - UNDERBENCH
FF-4410	CUPBOARD - UNDERBENCH DOUBLE
FF-4431	CUPBOARD - DRAWER UNITS

BIMID	DESCRIPTION
FF-4493	CUPBOARD - CATHETER HANGING, SLIDING GLASS DOORS, SHELIVING TO ONE SIDE
FF-5824	WASTE BIN, GENERAL
FF-16250	OXYGEN FLOWMETER
FF-21950	SUCTION ADAPTER
FF-22000	SUCTION BOTTLE
S-1006	VOICE DATA OUTLET - DOUBLE
S-1951	STAFF ASSIST CALL
S-6200	LIGHT SWITCH
S-7000	MEDICAL GAS OUTLET - OXYGEN
S-7010	MEDICAL GAS OUTLET - N2O
S-7020	MEDICAL GAS OUTLET - MEDICAL AIR
S-7040	MEDICAL GAS OUTLET - SUCTION
S-7070	SCAVENGE ADAPTER
S-7070	SCAVENGE OUTLET
S-8010	Staff/Nurse Assist call

BIMID	DESCRIPTION
S-8080	EMERGENCY CALL
S-9000	GENERAL POWER OUTLET - SINGLE
S-9010	EMERGENCY POWER OUTLET - SINGLE
S-9011	EMERGENCY POWER OUTLET - DOUBLE
S-9011	EMERGENCY POWER OUTLET - DOUBLE
S-9015	GENERAL POWER OUTLET - CLEANER
S-9030	CARDIAC PROTECTED
S-9060	GENERAL POWER OUTLET - SPECIAL FOR EQUIPMENT
S-11000	MEDICAL SERVICES PANEL
S-11060	SERVICES PANEL - SPECIAL
S-12030	LEAD LINING
S-9001650	GENERAL POWER OUTLET - DOUBLE (RCD PROTECTED)

REV	DESCRIPTION	DATE
2	This RLS has been redocumented	01.03.2016

**FOR GUIDANCE**

SCALE	RLS Room Code	Room Tag	REV
1 : 50 @ A3	CLAB	1.063.1	2



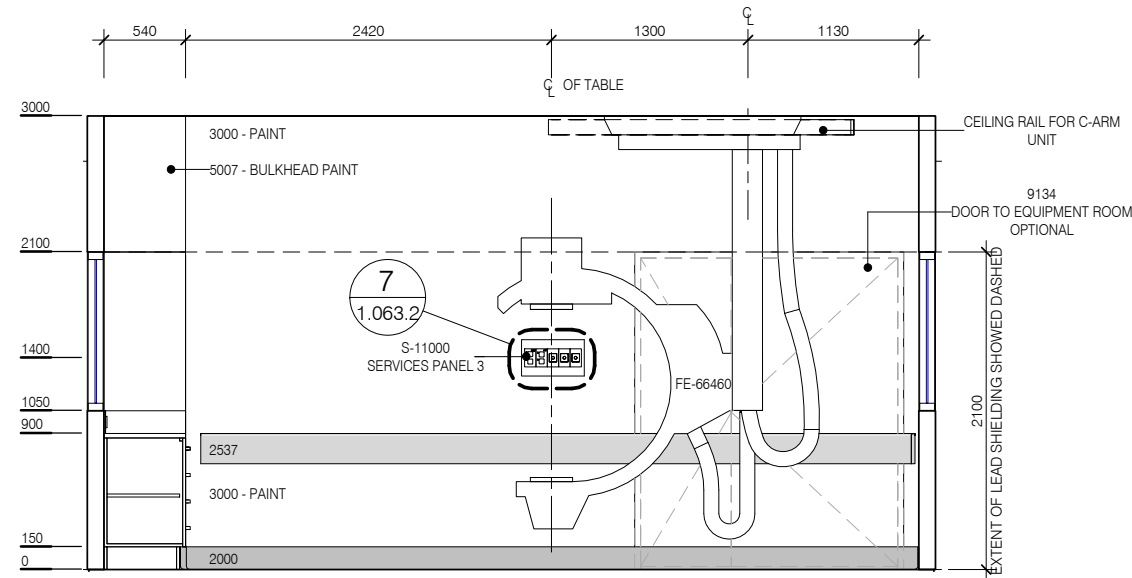
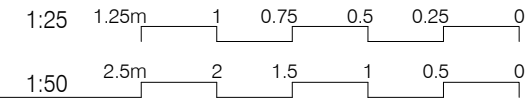
# AUSTRALASIAN HFG STANDARD COMPONENTS

Room Layout Sheet

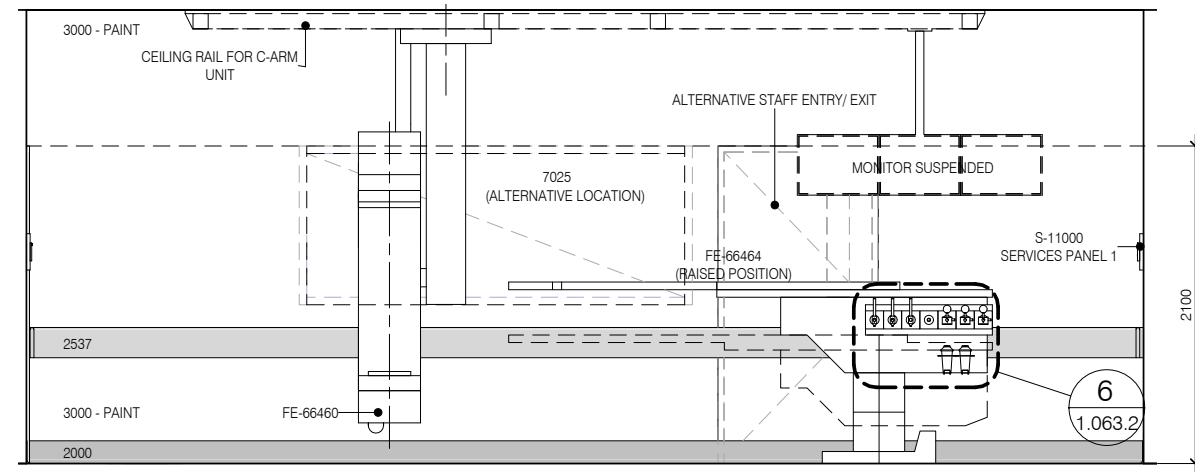
RLS Room Code: **CLAB**

Room Name:

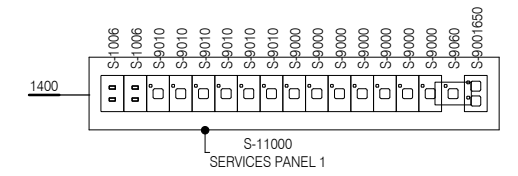
**CATHETER LABORATORY PROCEDURE ROOM**



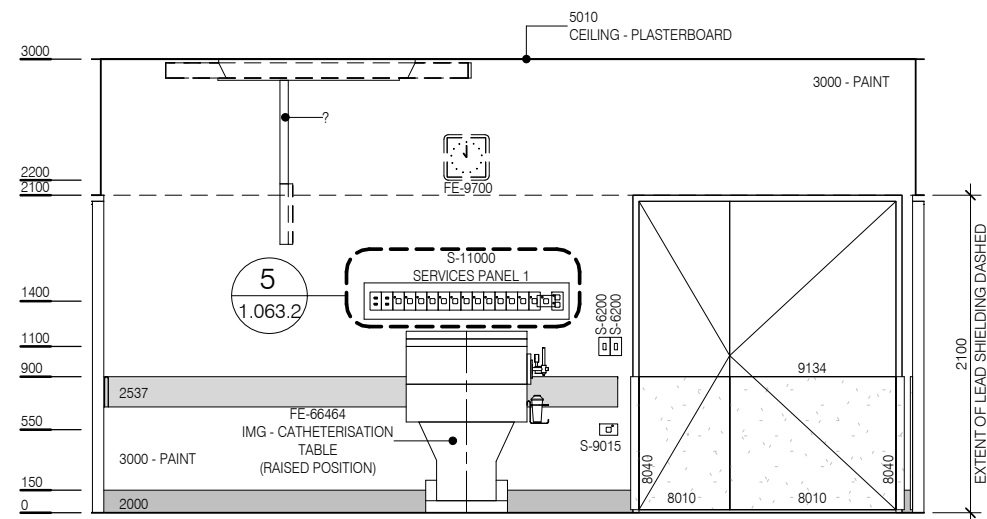
ELEVATION 1



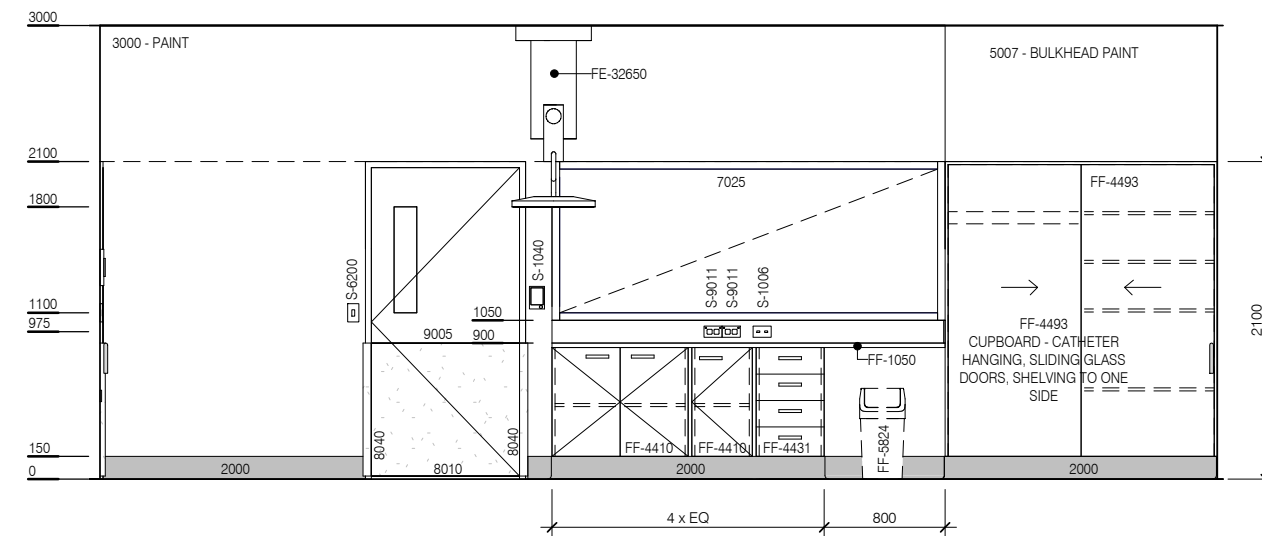
ELEVATION 2



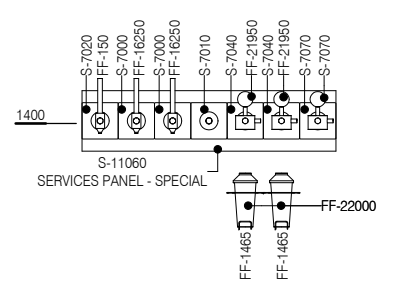
ELEVATION 5 ( 1 : 25 @ A3 )



ELEVATION 3



ELEVATION 4

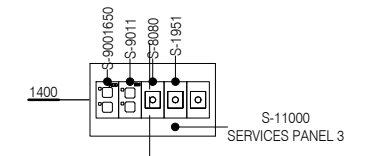


ELEVATION 6 ( 1 : 25 @ A3 )

BIMID	DESCRIPTION
2000	FLOOR VINYL COVERED SKIRTING
2537	WALL PROTECTION - CRASH RAIL - 2537
7025	OBSERVATION LEAD LINED - RADIATION WINDOW
8010	DOOR PROTECTION
8040	DOOR PROTECTION - FRAME
FE-9700	CLOCK - ANALOGUE, ELECTRIC
FE-32650	LIGHT - OPERATING, SINGLE, 5500
FE-36052	MONITOR - CARDIAC -SUSPENDED
FE-66460	IMG - CATHETER LAB IMAGING UNIT
FE-66464	IMG - CATHETERISATION TABLE
FF-150	AIR FLOWMETER
FF-1050	BENCHTOP - LAMINATE
FF-1465	BRACKET - SUCTION BOTTLE
FF-4410	CUPBOARD - UNDERBENCH
FF-4410	CUPBOARD - UNDERBENCH DOUBLE
FF-4431	CUPBOARD - DRAWER UNITS

BIMID	DESCRIPTION
FF-4493	CUPBOARD - CATHETER HANGING, SLIDING GLASS DOORS, SHELIVING TO ONE SIDE
FF-5824	WASTE BIN, GENERAL
FF-16250	OXYGEN FLOWMETER
FF-21950	SUCTION ADAPTER
FF-22000	SUCTION BOTTLE
S-1006	VOICE DATA OUTLET - DOUBLE
S-1951	STAFF ASSIST CALL
S-6200	LIGHT SWITCH
S-7000	MEDICAL GAS OUTLET - OXYGEN
S-7010	MEDICAL GAS OUTLET - N20
S-7020	MEDICAL GAS OUTLET - MEDICAL AIR
S-7040	MEDICAL GAS OUTLET - SUCTION
S-7070	SCAVENGE ADAPTER
S-7070	SCAVENGE OUTLET
S-8010	Staff/Nurse Assist call

BIMID	DESCRIPTION
S-8080	EMERGENCY CALL
S-9000	GENERAL POWER OUTLET - SINGLE
S-9010	EMERGENCY POWER OUTLET - SINGLE
S-9011	EMERGENCY POWER OUTLET - DOUBLE
S-9011	EMERGENCY POWER OUTLET - DOUBLE
S-9015	GENERAL POWER OUTLET - CLEANER
S-9030	CARDIAC PROTECTED
S-9060	GENERAL POWER OUTLET - SPECIAL FOR EQUIPMENT
S-11000	MEDICAL SERVICES PANEL
S-11060	SERVICES PANEL - SPECIAL
S-12030	LEAD LINING
S-9001650	GENERAL POWER OUTLET - DOUBLE (RCD PROTECTED)



ELEVATION 7 ( 1 : 25 @ A3 )



REV	DESCRIPTION	DATE
2	This RLS has been redocumented	01.03.2016

FOR GUIDANCE

SCALE	RLS Room Code	Room Tag	REV
1 : 50 @ A3	CLAB	1.063.2	2