

# AUSTRALASIAN HFG STANDARD COMPONENTS

Room Layout Sheet

RLS Room Code: **COMM**

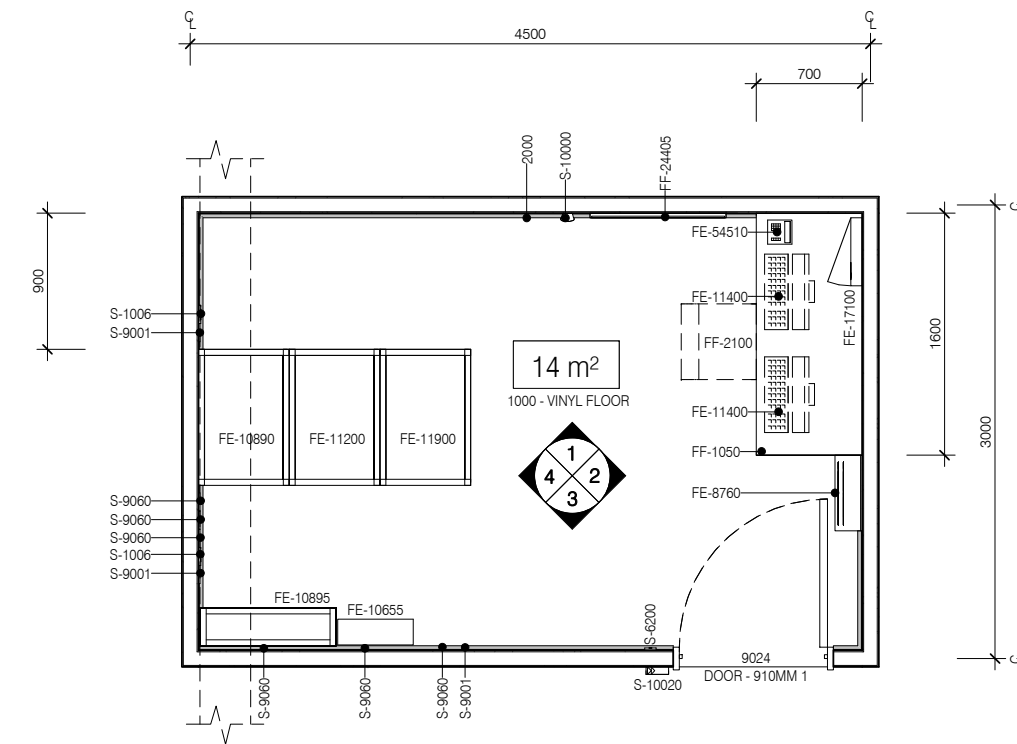
1:50 2.5m 2 1.5 1 0.5 0

Room Name:

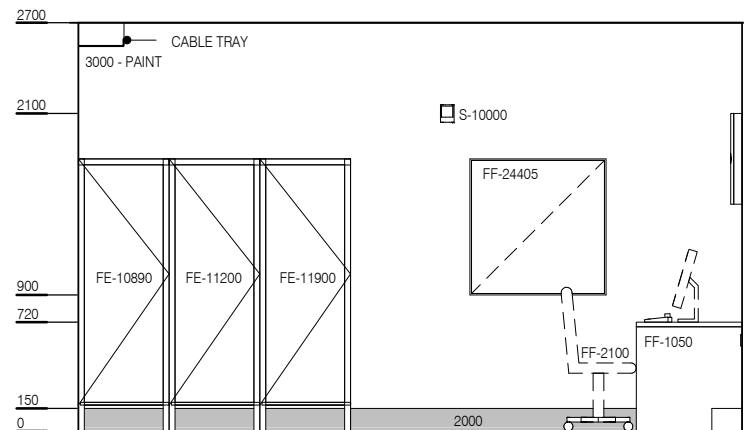
**COMMUNICATIONS ROOM**



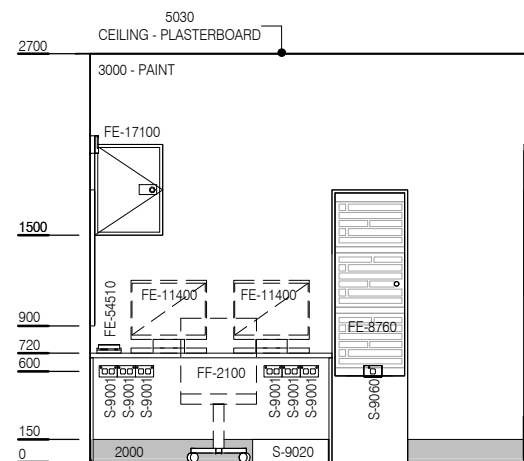
BIMID	DESCRIPTION
2000	FLOOR VINYL COVERED SKIRTING
8000	DOOR PROTECTION - KICKPLATE - 8000
FE-8760	CONTROL PANEL - FIRE AND EWIS
FE-10655	COMMUNICATIONS BOARD
FE-10890	RACK - COMMUNICATIONS
FE-10895	RACK - VOICE, IDF
FE-11200	COMPUTER - MAINFRAME
FE-11400	COMPUTER - PC & MONITOR
FE-11900	COMPUTER - SERVER
FE-17100	DISTRIBUTION BOARD
FE-54510	TELEPHONE - HANDSET, STANDARD
FF-1050	BENCHTOP - LAMINATE
FF-2100	CHAIR - ERGONOMIC OFFICE
FF-24405	WHITEBOARD - MAGNETIC
S-1006	VOICE DATA OUTLET - DOUBLE
S-6200	LIGHT SWITCH
S-9001	GENERAL POWER OUTLET - DOUBLE
S-9020	UNIVERSAL POWER SUPPLY
S-9060	GENERAL POWER OUTLET - DOUBLE SPECIAL FOR EQUIPMENT
S-9060	GENERAL POWER OUTLET - SPECIAL FOR EQUIPMENT
S-10000	MOTION DETECTOR ALARM
S-10020	CARD ACCESS



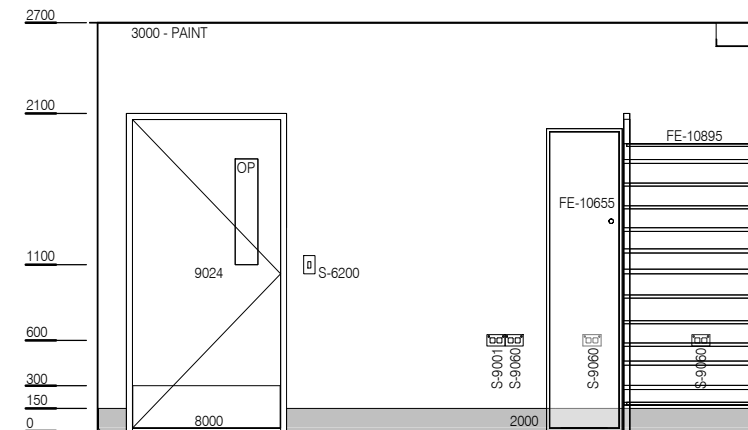
PLAN



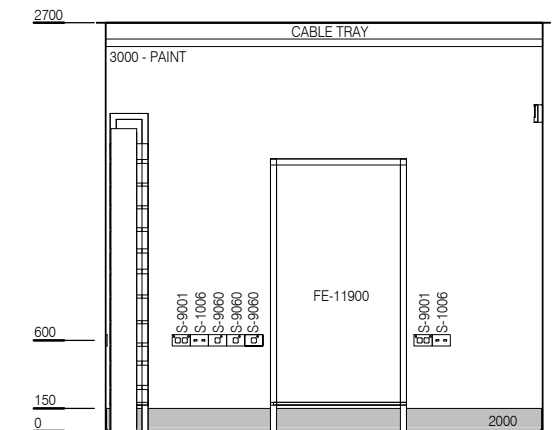
ELEVATION 1



ELEVATION 2



ELEVATION 3



ELEVATION 4



REV	DESCRIPTION	DATE
3	This RLS has been reviewed, redocumented and reissued	01.03.2016

FOR GUIDANCE

SCALE	RLS Room Code	Room Tag	REV
1 : 50 @ A3	COMM	1.077	3