

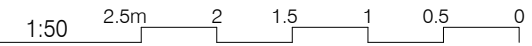
AUSTRALASIAN HFG STANDARD COMPONENTS

Room Layout Sheet

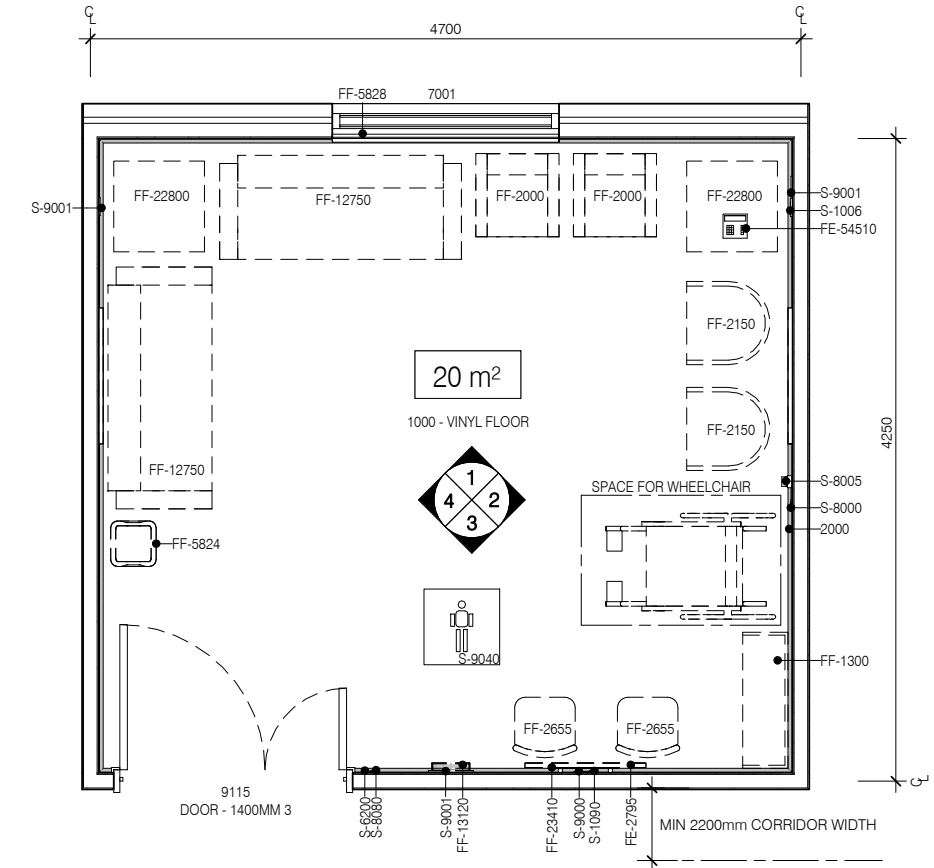
RLS Room Code: LNPF-20

Room Name:

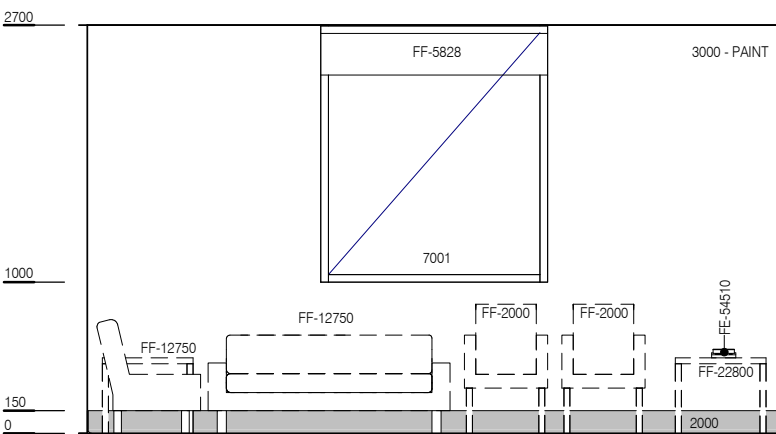
LOUNGE - PATIENT/FAMILY, 20m²



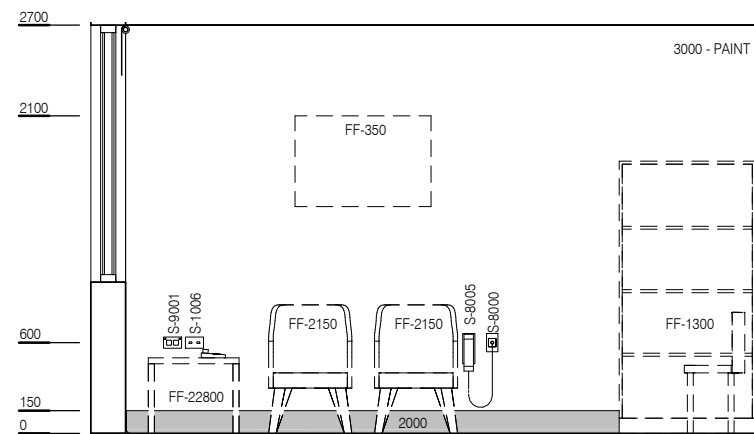
| BIMID | DESCRIPTION |
|----------|-------------------------------------|
| 2000 | FLOOR VINYL COVERED SKIRTING |
| 2529 | DOOR PROTECTION FRAME - 2529 |
| 2530 | DOOR PROTECTION PLATE - 2530 |
| 7001 | WINDOWS |
| FE-2795 | TELEVISION (LARGE FLATSCREEN) |
| FE-54510 | TELEPHONE - HANDSET, STANDARD |
| FF-350 | ARTWORK |
| FF-1300 | BOOKCASE |
| FF-2000 | CHAIR - LOUNGE |
| FF-2150 | CHAIR - PATIENT |
| FF-2655 | CHAIR - VISITOR |
| FF-5824 | WASTE BIN, GENERAL |
| FF-5828 | EXTERNAL WINDOW DRESSING (BLACKOUT) |
| FF-12750 | LOUNGE - 2 SEAT |
| FF-13120 | MAGAZINE AND PAMPHLET RACK |
| FF-22800 | TABLE - LOW |
| FF-24200 | WHEELCHAIR |
| S-1006 | VOICE DATA OUTLET - DOUBLE |
| S-1090 | TV - MATV |
| S-1951 | STAFF ASSIST CALL |
| S-6200 | LIGHT SWITCH |
| S-8000 | PATIENT TO STAFF CALL |
| S-8005 | PATIENT CALL HANDSET |
| S-8080 | EMERGENCY CALL |
| S-9000 | GENERAL POWER OUTLET - SINGLE |
| S-9001 | GENERAL POWER OUTLET - DOUBLE |
| S-9040 | BODY PROTECTED |



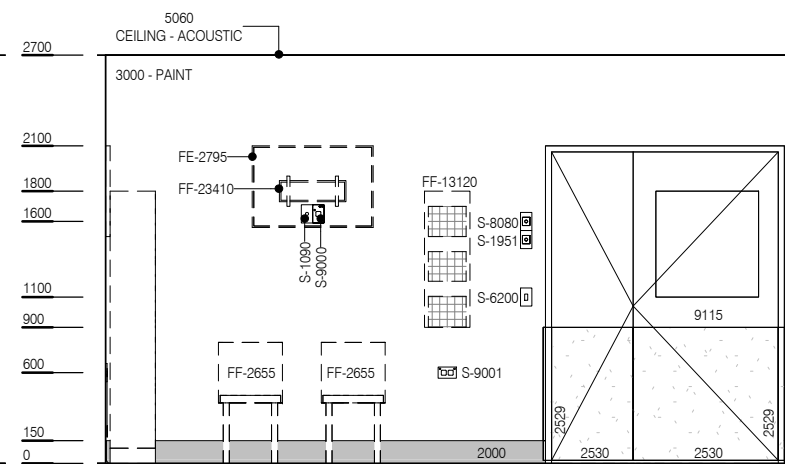
PLAN



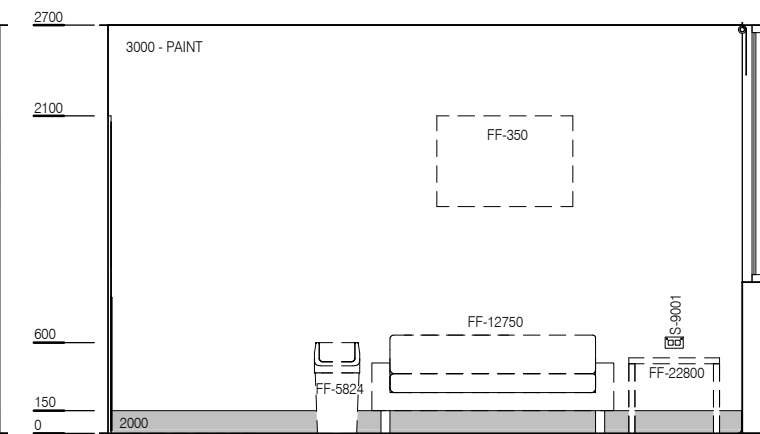
ELEVATION 1



ELEVATION 2



ELEVATION 3



ELEVATION 4



| REV | DESCRIPTION | DATE |
|-----|------------------------|------------|
| 1 | New Standard Component | 01.03.2016 |

FOR GUIDANCE

| SCALE | RLS Room Code | Room Tag | REV |
|-------------|---------------|----------|-----|
| 1 : 50 @ A3 | LNPF-20 | 1.259 | 1 |