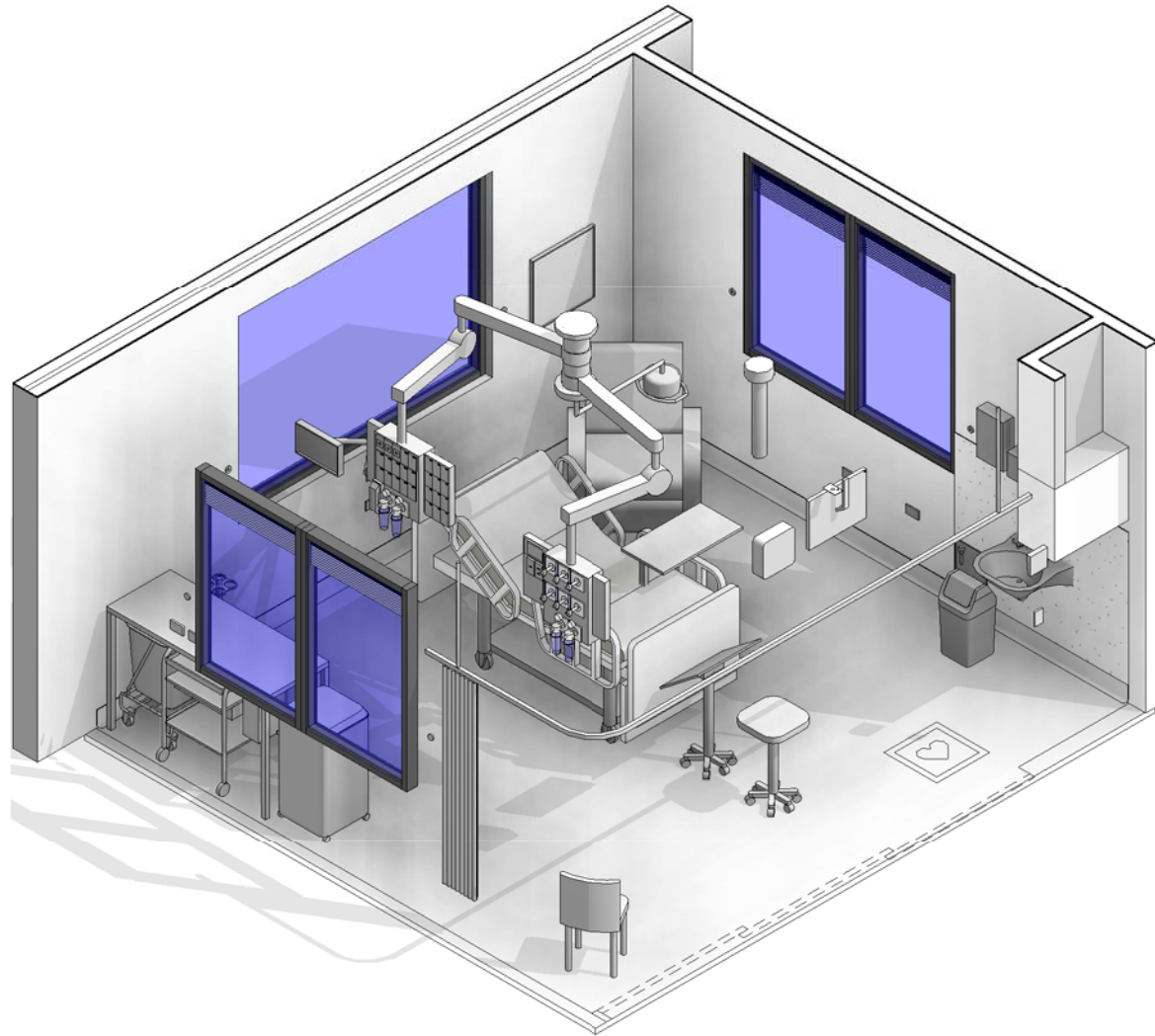


AUSTRALASIAN HFG STANDARD COMPONENTS

Room Layout Sheet

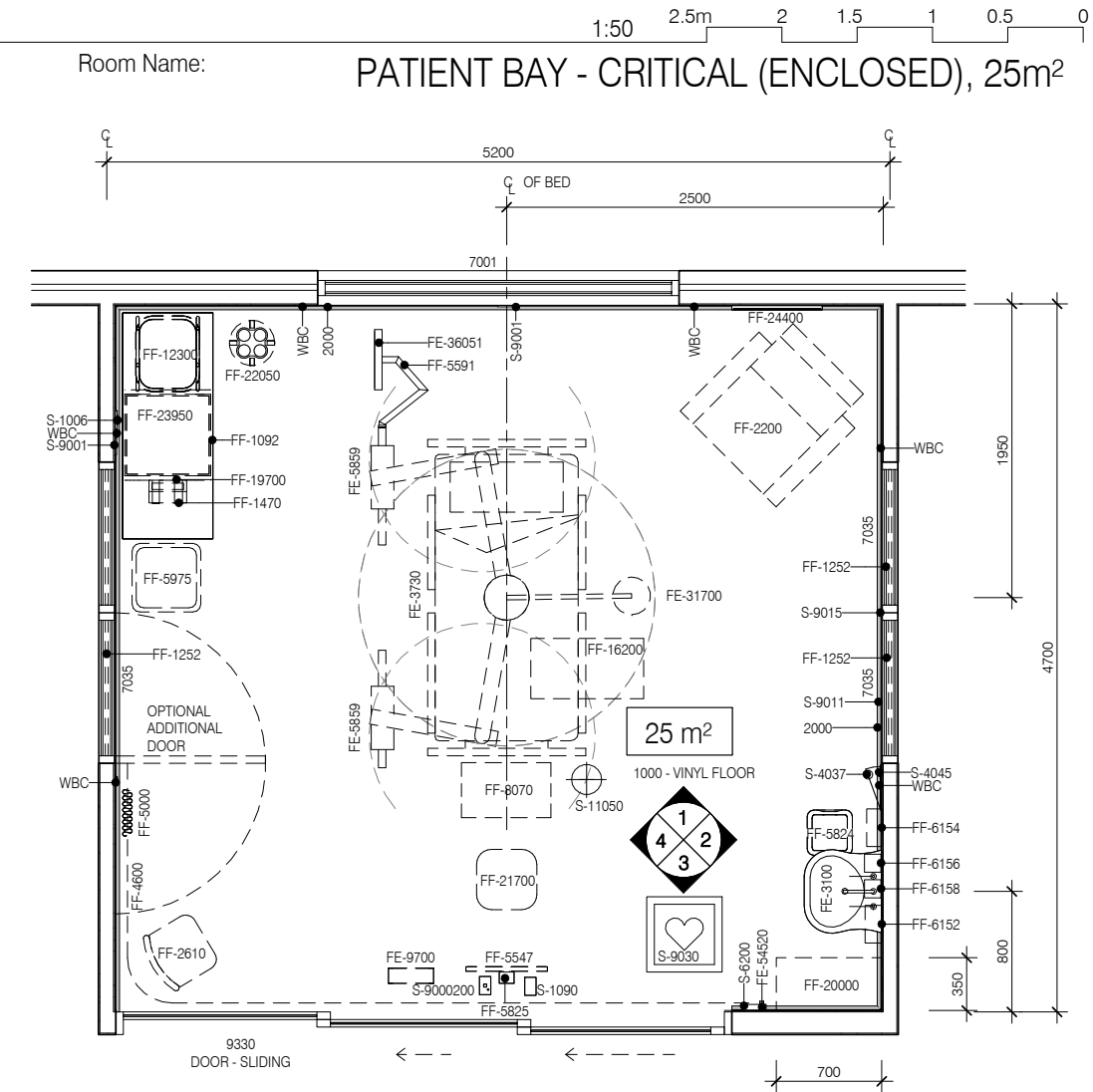
RLS Room Code: **PBCE-25**



BIMID	DESCRIPTION
2000	FLOOR VINYL COVED SKIRTING
3060	WALL VINYL - 3060
7001	WINDOWS
7035	7035 - INTERNAL WINDOW, DOUBLE GLAZED
FE-3100	BASIN - SCRUB, TYPE A
FE-3730	BED- ICU - ELECTRIC
FE-5859	SERVICES PENDANT - 2 ARM
FE-9700	CLOCK - ANALOGUE, ELECTRIC
FE-15985	DIALYSIS STATION
FE-31700	LIGHT - EXAMINATION - CEILING
FE-36051	PENDANT MOUNTED MONITORS - CARDIAC MONITOR
FE-54520	TELEPHONE - STANDARD - WALL MOUNTED HANDSFREE
FF-1092	BENCH - LAMINATED FREE STANDING 600 X 1500mm
FF-1252	BLIND - VENETIAN INTEGRAL
FF-1470	BRACKET - SHARPS
FF-2200	CHAIR - RECLINER,
FF-2610	CHAIR - VISITOR - STACKABLE
FF-4600	CURTAIN TRACK - BED SCREEN
FF-5000	CURTAIN - BED SCREEN
FF-5547	PATIENT ENTERTAINMENT
FF-5591	BRACKET - CARDIAC MONITOR
FF-5824	WASTE BIN, GENERAL
FF-5825	BRACKET - PATIENT ENTERTAINMENT, CEILING
FF-5975	WASTE BIN - CLINICAL - 120L
FF-6152	DISPENSER - DISPOSABLE GLOVES
FF-6154	DISPENSER - HAND TOWEL
FF-6156	DISPENSER - SOAP
FF-6158	DISPENSER - SOAP ANTISEPTIC
FF-8070	FLOWCHART STAND - MOBILE
FF-12300	LINEN CARRIER - DIRTY, SINGLE
FF-16200	TABLE - OVERBED
FF-19700	SHARPS BINS
FF-20000	ADJUSTABLE SHELVES
FF-21700	STOOL - ADJUSTABLE - HIGH
FF-22050	SUCTION BOTTLE - CARRIER
FF-23950	TROLLEY - PATIENT
FF-24400	WHITEBOARD
S-1006	VOICE DATA OUTLET - DOUBLE
S-1090	TV - MATV
S-4037	TUNDISH DRAIN
S-4045	REVERSE OSMOSIS (RO) WATER OUTLET
S-6200	LIGHT SWITCH
S-9001	GENERAL POWER OUTLET - DOUBLE
S-9011	EMERGENCY POWER OUTLET - DOUBLE
S-9015	GENERAL POWER OUTLET - CLEANER
S-9030	CARDIAC PROTECTED
S-9000200	GENERAL POWER OUTLET - SPECIAL MOUNT ON CEILING

Room Name:

PATIENT BAY - CRITICAL (ENCLOSED), 25m²



PLAN

PBCE PENDANTS		
BIM ID	DESCRIPTION	Count
FF-150	AIR FLOWMETER	2
FF-16250	OXYGEN FLOWMETER	4
FF-21950	SUCTION ADAPTER	4
FF-22000	SUCTION BOTTLE	4
RCD	RCD PANEL	1
S-1006	VOICE DATA OUTLET - DOUBLE	1
S-1120	MONITOR COMMUNICATION OUTLET	1
S-1951	STAFF ASSIST CALL	1
S-7000	MEDICAL GAS OUTLET - OXYGEN	4
S-7020	MEDICAL GAS OUTLET - MEDICAL AIR	2
S-7040	MEDICAL GAS OUTLET - SUCTION	4
S-8000	PATIENT TO STAFF CALL	1
S-8005	PATIENT CALL HANDSET	1
S-8080	EMERGENCY CALL	1
S-9000	GENERAL POWER OUTLET - SINGLE	12
S-9010	EMERGENCY POWER OUTLET - SINGLE	12



REV	DESCRIPTION	DATE
3	This RLS has been redocumented	01.03.2016

FOR GUIDANCE

SCALE	RLS Room Code	Room Tag	REV
1 : 50 @ A3	PBCE-25	1.164.1	3

AUSTRALASIAN HFG STANDARD COMPONENTS

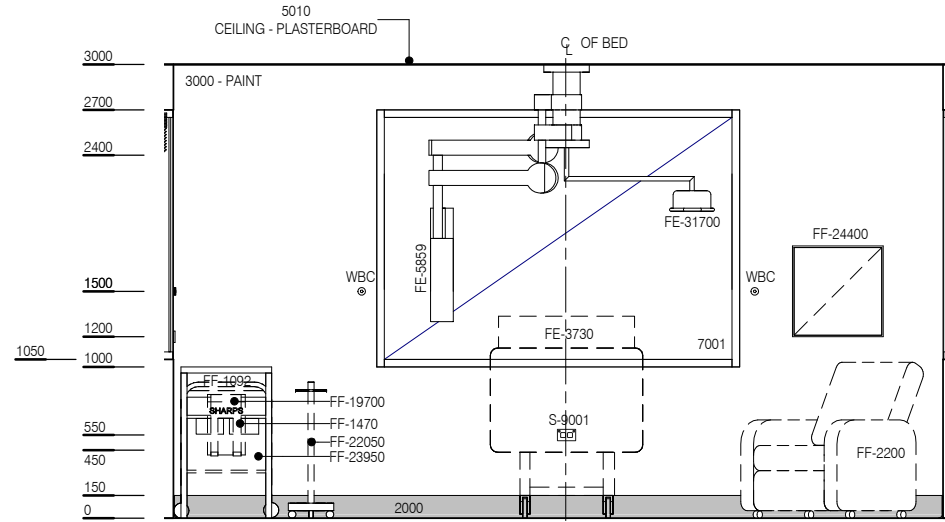
Room Layout Sheet

RLS Room Code: **PBCE-25**

1:50 2.5m 2 1.5 1 0.5 0

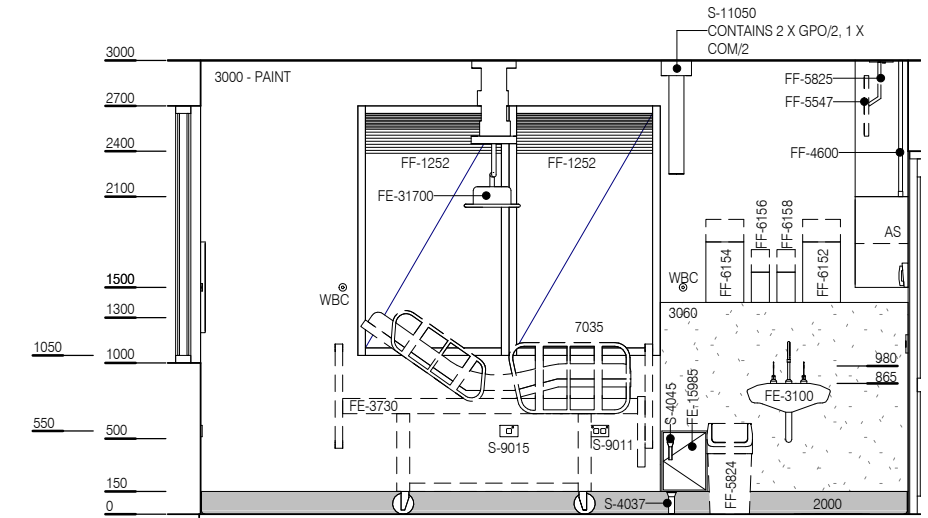
Room Name:

PATIENT BAY - CRITICAL (ENCLOSED), 25m²

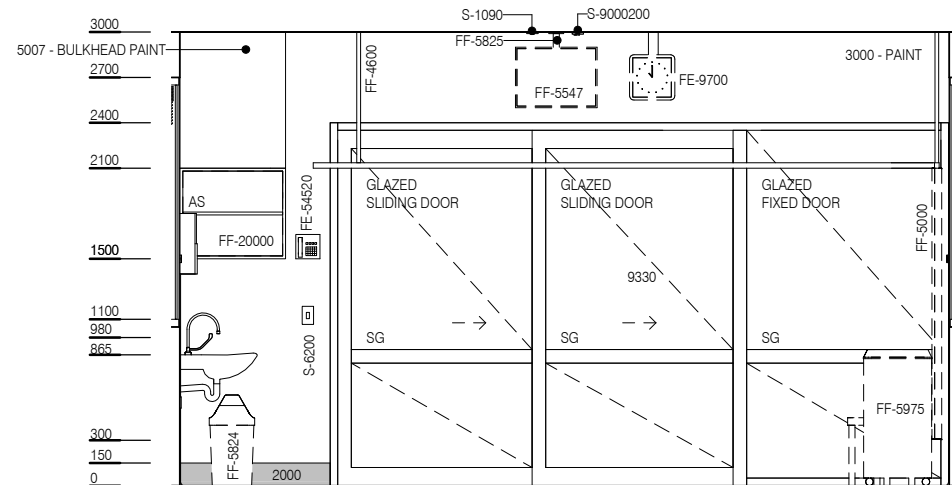


ELEVATION 1

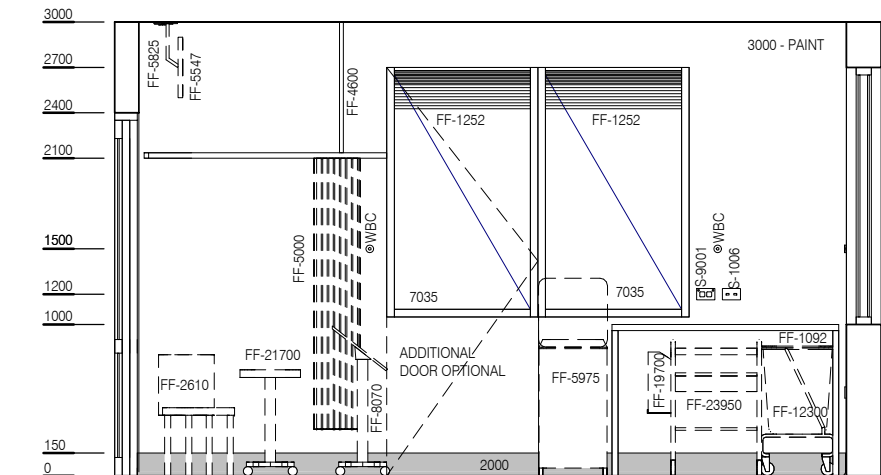
BIMID	DESCRIPTION
2000	FLOOR VINYL COVED SKIRTING
3060	WALL VINYL - 3060
7001	WINDOWS
7035	7035 - INTERNAL WINDOW, DOUBLE GLAZED
FE-3100	BASIN - SCRUB, TYPE A
FE-3730	BED- ICU - ELECTRIC
FE-5859	SERVICES PENDANT - 2 ARM
FE-9700	CLOCK - ANALOGUE, ELECTRIC
FE-15985	DIALYSIS STATION
FE-31700	LIGHT - EXAMINATION - CEILING
FE-36051	PENDANT MOUNTED MONITORS - CARDIAC MONITOR
FE-54520	TELEPHONE - STANDARD - WALL MOUNTED HANDSFREE
FF-1092	BENCH - LAMINATED FREE STANDING 600 X 1500mm
FF-1252	BLIND - VENETIAN INTEGRAL
FF-1470	BRACKET - SHARPS
FF-2200	CHAIR - RECLINER,
FF-2610	CHAIR - VISITOR - STACKABLE
FF-4600	CURTAIN TRACK - BED SCREEN
FF-5000	CURTAIN - BED SCREEN
FF-5547	PATIENT ENTERTAINMENT
FF-5591	BRACKET - CARDIAC MONITOR
FF-5824	WASTE BIN, GENERAL
FF-5825	BRACKET - PATIENT ENTERTAINMENT, CEILING
FF-5975	WASTE BIN - CLINICAL - 120L
FF-6152	DISPENSER - DISPOSABLE GLOVES
FF-6154	DISPENSER - HAND TOWEL
FF-6156	DISPENSER - SOAP
FF-6158	DISPENSER - SOAP ANTISEPTIC
FF-8070	FLOWCHART STAND - MOBILE
FF-12300	LINEN CARRIER - DIRTY, SINGLE
FF-16200	TABLE - OVERBED
FF-19700	SHARPS BINS
FF-20000	ADJUSTABLE SHELVES
FF-21700	STOOL - ADJUSTABLE - HIGH
FF-22050	SUCTION BOTTLE - CARRIER
FF-23950	TROLLEY - PATIENT
FF-24400	WHITEBOARD
S-1006	VOICE DATA OUTLET - DOUBLE
S-1090	TV - MATV
S-4037	TUNDISH DRAIN
S-4045	REVERSE OSMOSIS (RO) WATER OUTLET
S-6200	LIGHT SWITCH
S-9001	GENERAL POWER OUTLET - DOUBLE
S-9011	EMERGENCY POWER OUTLET - DOUBLE
S-9015	GENERAL POWER OUTLET - CLEANER
S-9030	CARDIAC PROTECTED
S-9000200	GENERAL POWER OUTLET - SPECIAL MOUNT ON CEILING



ELEVATION 2



ELEVATION 3



ELEVATION 4

PBCE PENDANTS		
BIM ID	DESCRIPTION	Count
FF-150	AIR FLOWMETER	2
FF-16250	OXYGEN FLOWMETER	4
FF-21950	SUCTION ADAPTER	4
FF-22000	SUCTION BOTTLE	4
RCD	RCD PANEL	1
S-1006	VOICE DATA OUTLET - DOUBLE	1
S-1120	MONITOR COMMUNICATION OUTLET	1
S-1951	STAFF ASSIST CALL	1
S-7000	MEDICAL GAS OUTLET - OXYGEN	4
S-7020	MEDICAL GAS OUTLET - MEDICAL AIR	2
S-7040	MEDICAL GAS OUTLET - SUCTION	4
S-8000	PATIENT TO STAFF CALL	1
S-8005	PATIENT CALL HANDSET	1
S-8080	EMERGENCY CALL	1
S-9000	GENERAL POWER OUTLET - SINGLE	12
S-9010	EMERGENCY POWER OUTLET - SINGLE	12



REV	DESCRIPTION	DATE
3	This RLS has been redocumented	01.03.2016

FOR GUIDANCE

SCALE	RLS Room Code	Room Tag	REV
1 : 50 @ A3	PBCE-25	1.164.2	3