

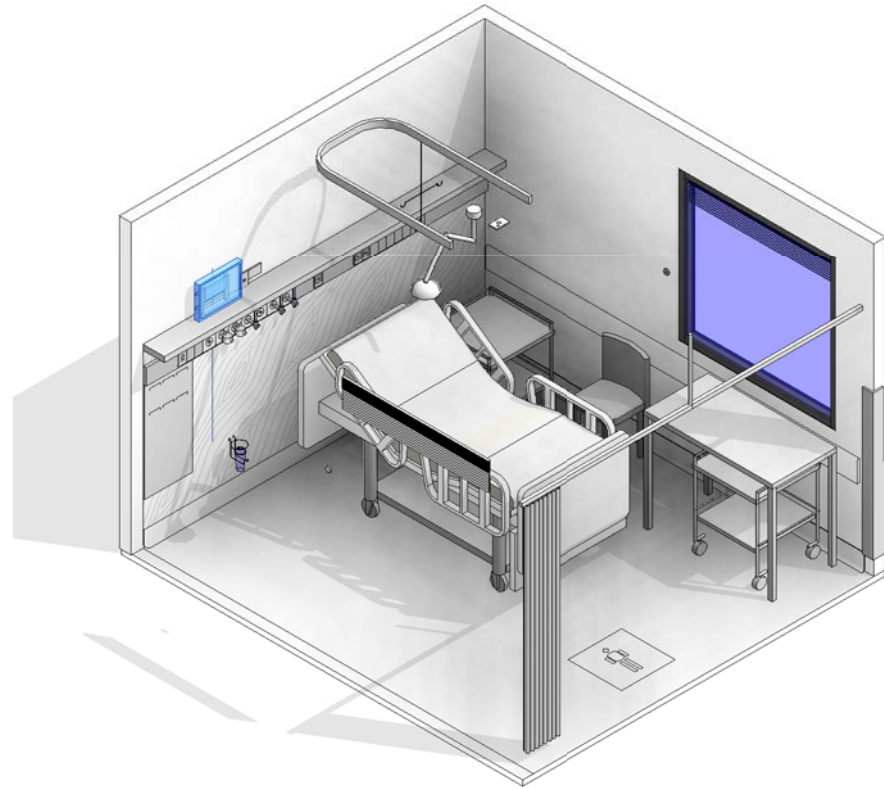
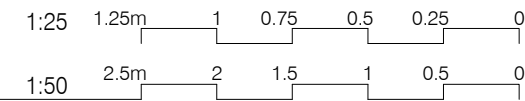
AUSTRALASIAN HFG STANDARD COMPONENTS

Room Layout Sheet

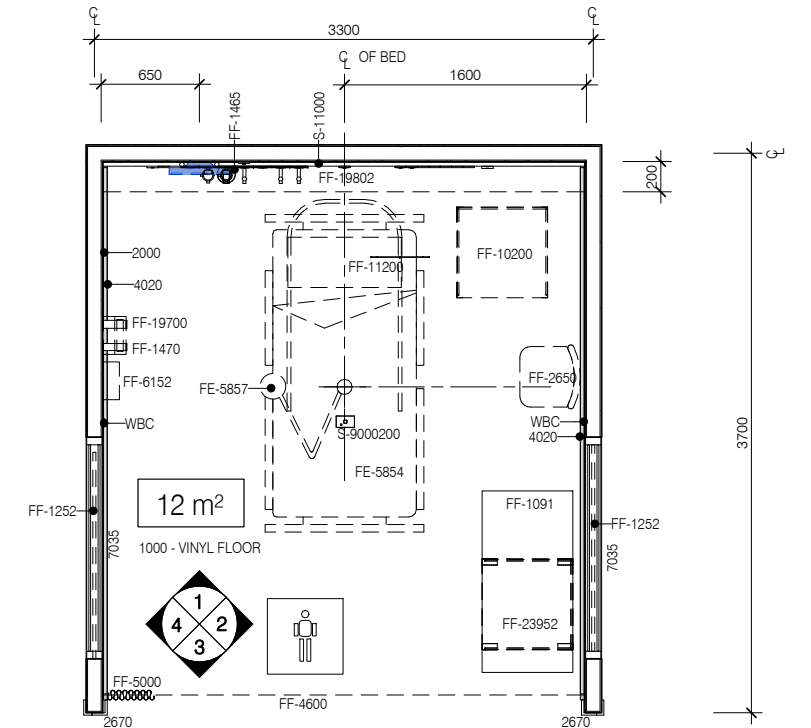
RLS Room Code: **PBTR-A12**

Room Name:

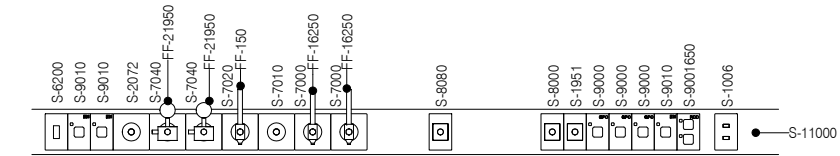
PATIENT BAY - ACUTE TREATMENT, 12m²



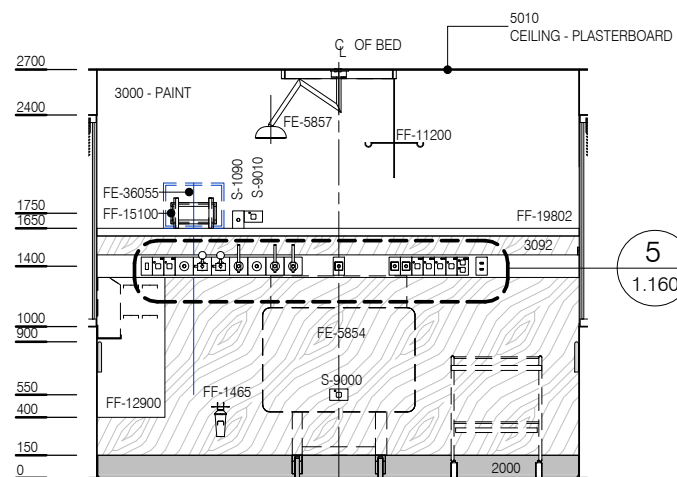
BIM ID	DESCRIPTION
2000	FLOOR VINYL COVERED SKIRTING
2670	WALL PROTECTION - CORNER GUARD
3092	WALL PROTECTION
4020	WALL PROTECTION - CRASH RAIL 4020
7035	INTERNAL WINDOW, DOUBLE GLAZED
FE-5854	BED - ICU, ELECTRIC + PATIENT MATTRESS
FE-5857	LIGHT PROCEDURE - SMALL CEILING MOUNTED
FE-36055	MONITOR - CARDIAC WITH VITAL SIGNS
FF-150	AIR FLOWMETER
FF-1091	BENCH - LAMINATED FREE STANDING 1200
FF-1252	BLIND - VENETIAN INTEGRAL
FF-1465	BRACKET - SUCTION BOTTLE
FF-1470	BRACKET - SHARPS
FF-2650	CHAIR - VISITOR, PATIENT
FF-4600	CURTAIN TRACK - BED SCREEN STRAIGHT
FF-5000	CURTAIN - BED SCREEN
FF-6152	DISPENSER - DISPOSABLE GLOVES
FF-10200	TROLLEY - INSTRUMENT
FF-11200	IV TRACK - CEILING MOUNTED
FF-12900	LOUVRED PANEL
FF-15100	BRACKET - MONITOR
FF-16250	OXYGEN FLOWMETER
FF-19700	SHARPS BINS
FF-19802	OVERHEAD SHELVING UNIT, 200mm
FF-21950	SUCTION ADAPTER
FF-22000	SUCTION BOTTLE
FF-23952	TROLLEY - SMALL
S-1006	VOICE DATA OUTLET - DOUBLE
S-1090	TV - MATV
S-1951	STAFF ASSIST CALL
S-2072	SCAVENGE OUTLET
S-6200	LIGHT SWITCH- READING
S-7000	MEDICAL GAS OUTLET - OXYGEN
S-7010	MEDICAL GAS OUTLET - N2O
S-7020	MEDICAL GAS OUTLET - MEDICAL AIR
S-7040	MEDICAL GAS OUTLET - SUCTION
S-8000	PATIENT TO STAFF CALL
S-8080	EMERGENCY CALL
S-9000	GENERAL POWER OUTLET - SINGLE
S-9000	GENERAL POWER OUTLET - SINGLE
S-9010	EMERGENCY POWER OUTLET - SINGLE
S-9010	EMERGENCY POWER OUTLET - SINGLE
S-9040	BODY PROTECTED
S-11000	MEDICAL SERVICES PANEL
S-9000200	GENERAL POWER OUTLET - SPECIAL MOUNT ON CEILING
S-9001650	GENERAL POWER OUTLET - DOUBLE (RCD PROTECTED)



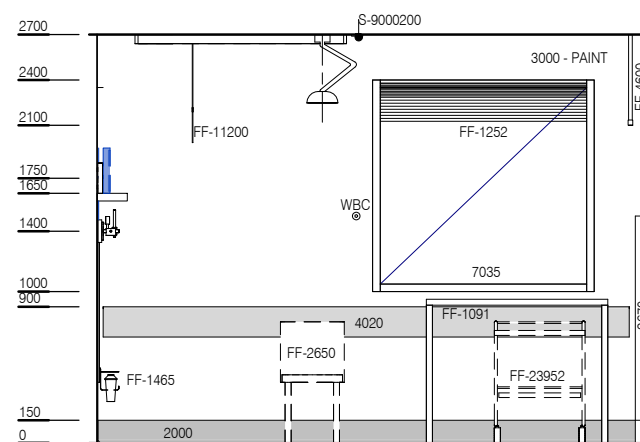
PLAN



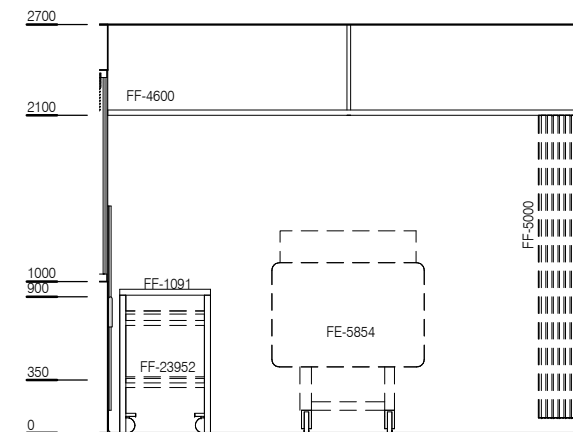
ELEVATION 5 (1 : 25 @ A3)



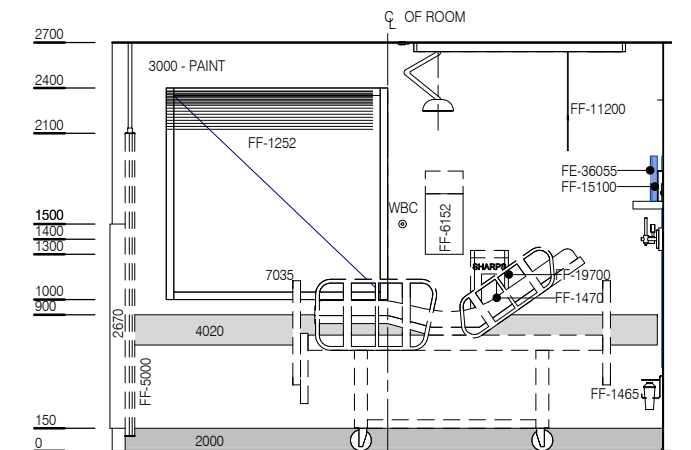
ELEVATION 1



ELEVATION 2



ELEVATION 3



ELEVATION 4



REV	DESCRIPTION	DATE
4	This RLS has been redocumented	01.03.2016

FOR GUIDANCE

SCALE	RLS Room Code	Room Tag	REV
1 : 50 @ A3	PBTR-A12	1.160	4