

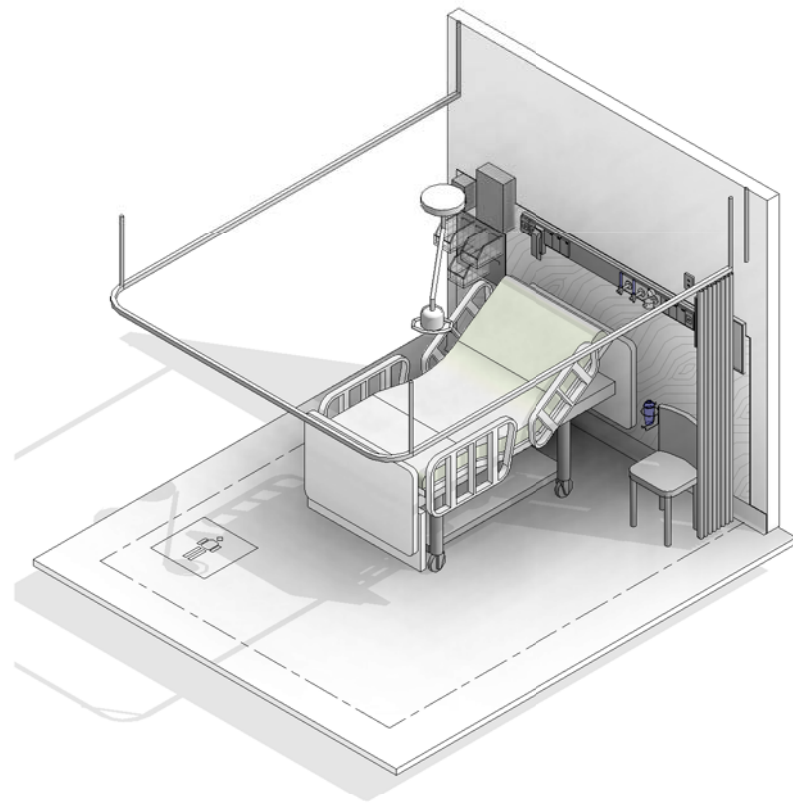
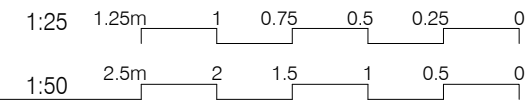
AUSTRALASIAN HFG STANDARD COMPONENTS

Room Layout Sheet

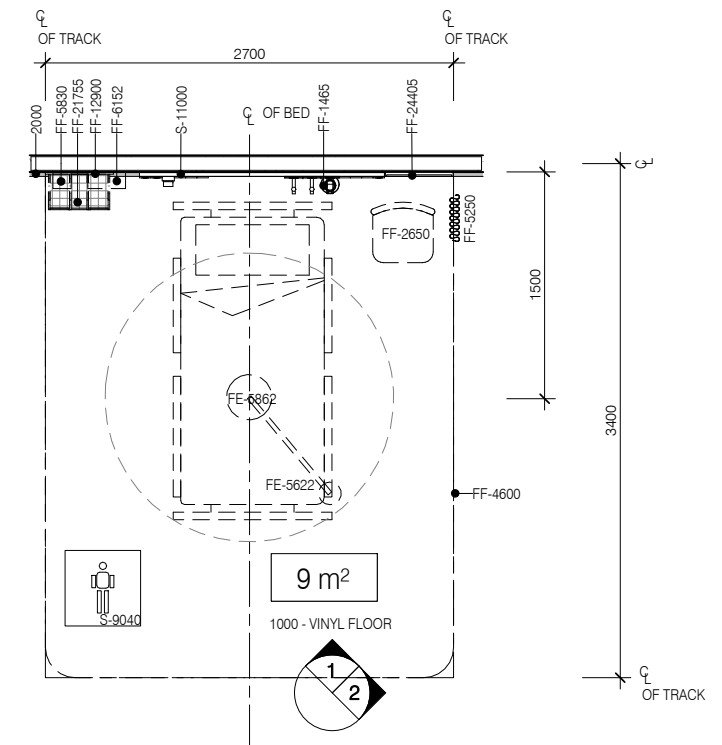
RLS Room Code: **PBTR-H-9**

Room Name:

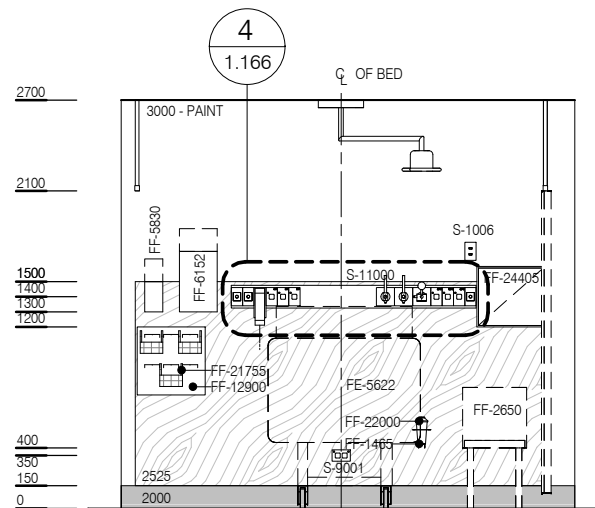
PATIENT BAY - HOLDING, 9m²



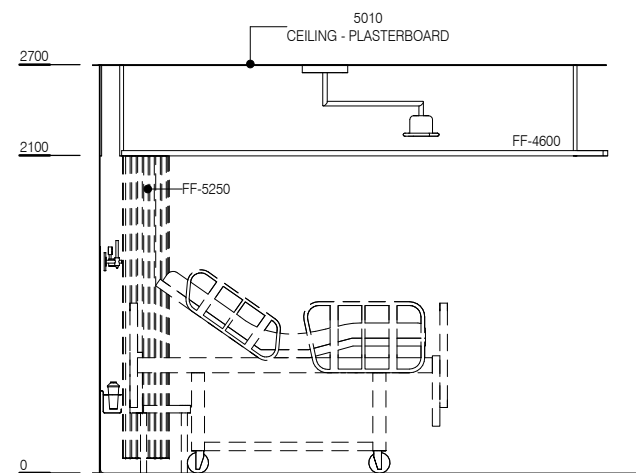
| BIMID | DESCRIPTION |
|----------|---|
| 2000 | FLOOR VINYL COVERED SKIRTING |
| 2525 | WALL PROTECTION - BED |
| FE-5622 | BED - INPATIENT, ELECTRIC + STANDARD PATIENT MATTRESS |
| FE-5862 | LIGHT PROCEDURE - SMALL |
| FF-150 | AIR FLOWMETER |
| FF-1465 | BRACKET - SUCTION BOTTLE |
| FF-2650 | CHAIR - VISITOR, PATIENT |
| FF-4600 | CURTAIN TRACK - BED SCREEN - U SHAPE |
| FF-5830 | DISPENSER - ANTISEPTIC HAND RUB |
| FF-6152 | DISPENSER - DISPOSABLE GLOVES |
| FF-12900 | LOUVRED PANEL |
| FF-16250 | OXYGEN FLOWMETER |
| FF-21755 | STORAGE BINS - FOR LOUVRED PANEL |
| FF-21950 | SUCTION ADAPTER |
| FF-22000 | SUCTION BOTTLE |
| FF-24405 | WHITEBOARD - MAGNETIC |
| S-1006 | VOICE DATA OUTLET - DOUBLE |
| S-1951 | STAFF ASSIST CALL |
| S-7000 | MEDICAL GAS OUTLET - OXYGEN |
| S-7020 | MEDICAL GAS OUTLET - MEDICAL AIR |
| S-7040 | MEDICAL GAS OUTLET - SUCTION |
| S-8000 | PATIENT TO STAFF CALL |
| S-8005 | PATIENT CALL HANDSET |
| S-8080 | EMERGENCY CALL |
| S-9000 | GENERAL POWER OUTLET - SINGLE |
| S-9001 | GENERAL POWER OUTLET - DOUBLE |
| S-9010 | EMERGENCY POWER OUTLET - SINGLE |
| S-9040 | BODY PROTECTED |
| S-11000 | MEDICAL SERVICES PANEL |



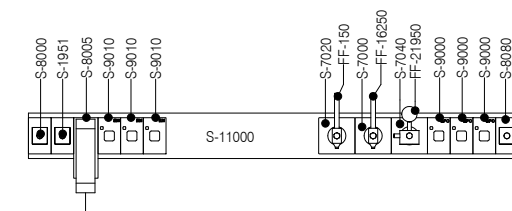
PLAN



ELEVATION 1



ELEVATION 2



ELEVATION 3 (1:25 @ A3)



| REV | DESCRIPTION | DATE |
|-----|---|------------|
| 5 | This RLS has been reviewed, redocumented and reissued | 01.03.2016 |

FOR GUIDANCE

| SCALE | RLS Room Code | Room Tag | REV |
|-------------|---------------|----------|-----|
| 1 : 50 @ A3 | PBTR-H-9 | 1.166 | 5 |