

AUSTRALASIAN HFG STANDARD COMPONENTS

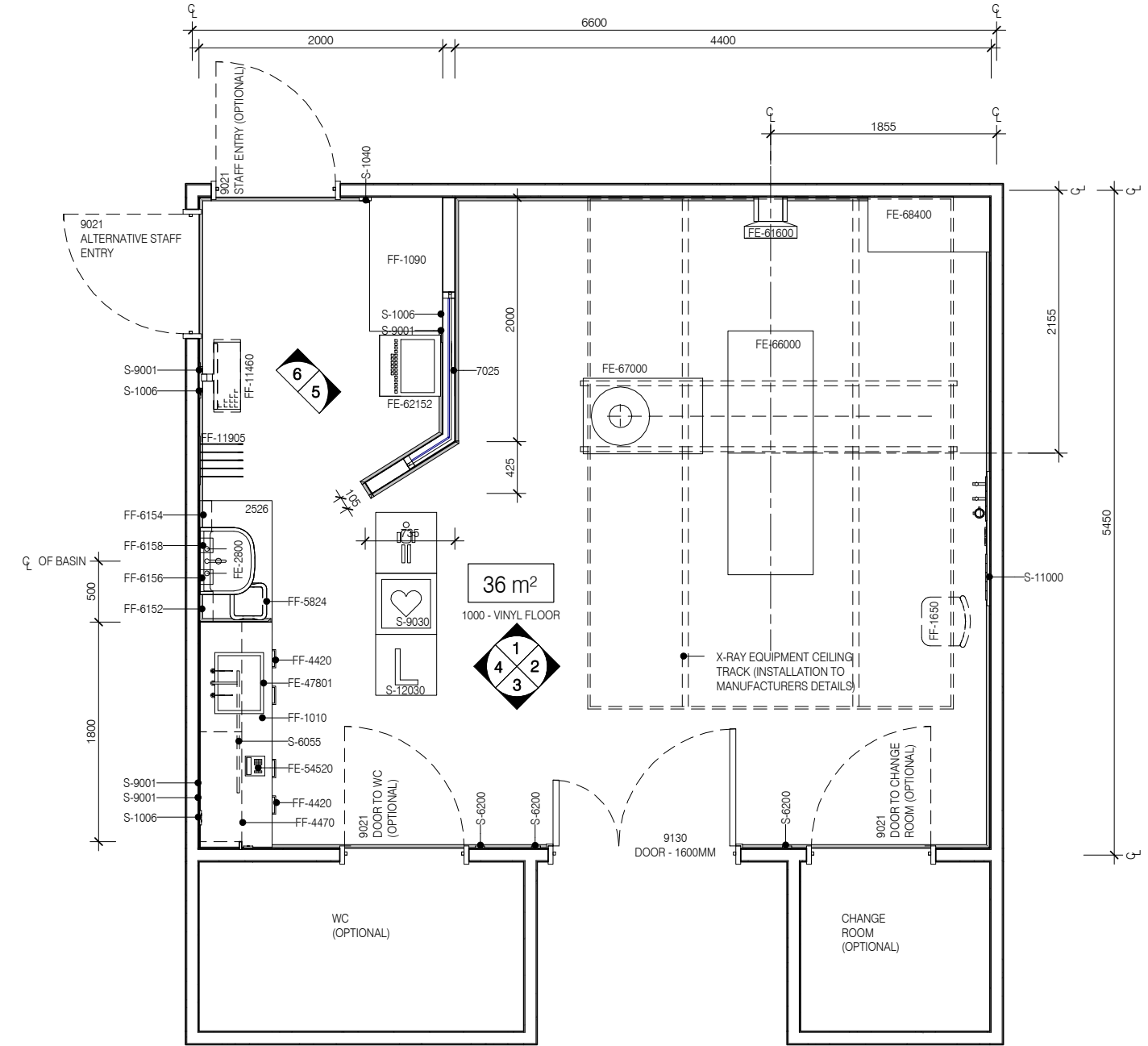
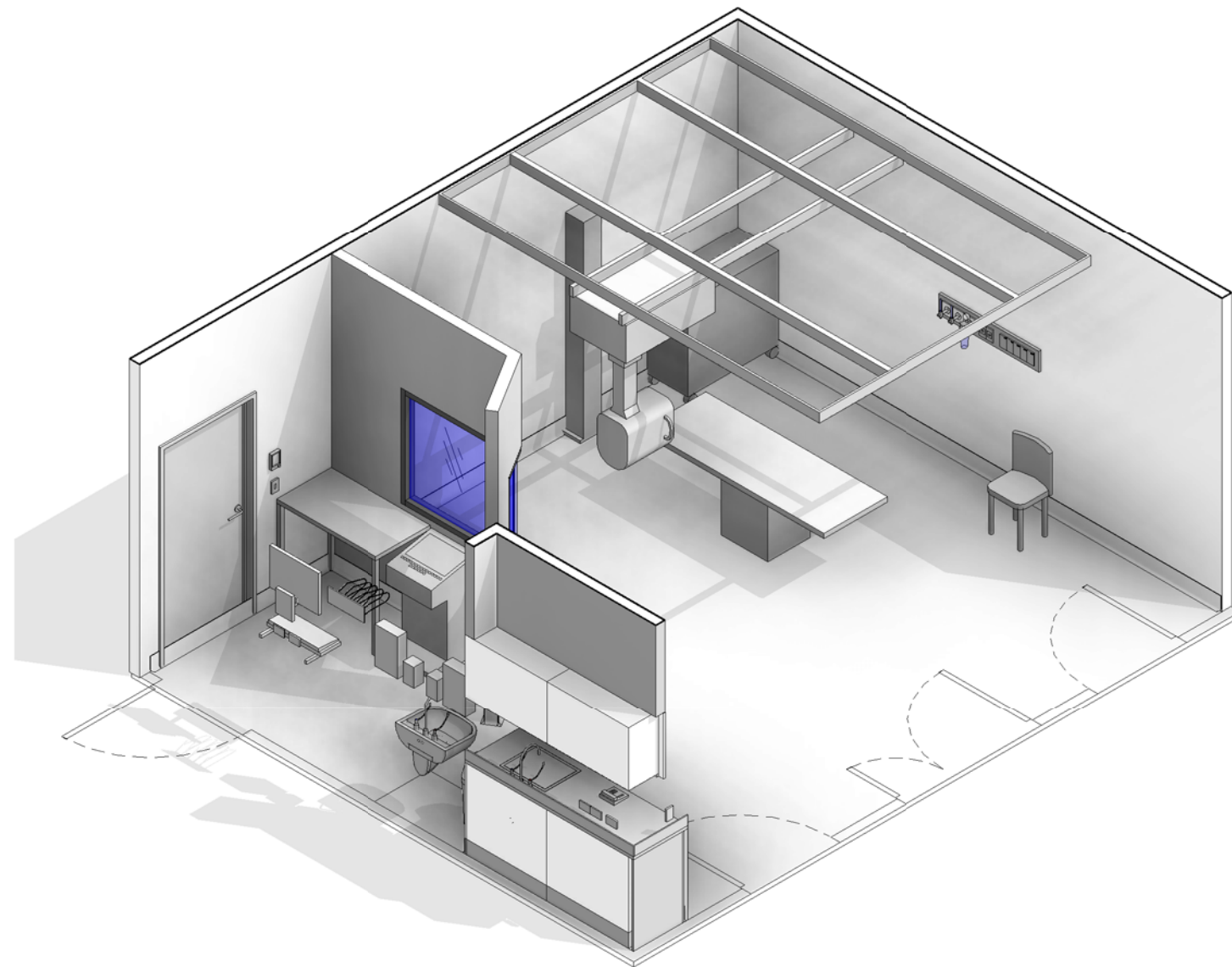
Room Layout Sheet

RLS Room Code: **SCRN**

1:50 2.5m 2 1.5 1 0.5 0

Room Name:

SCREENING ROOM (FLUOROSCOPY)



| BIM ID | DESCRIPTION |
|----------|--|
| 2000 | FLOOR VINYL COVERED SKIRTING |
| 3060 | WALL VINYL - 3060 |
| 7025 | OBSERVATION LEAD LINED - RADIATION WINDOW |
| 8000 | DOOR PROTECTION - KICKPLATE - 8000 |
| 8010 | DOOR PROTECTION |
| 8040 | DOOR PROTECTION - FRAME |
| FE-2800 | BASIN - HANDWASH, TYPE B |
| FE-4045 | TAP MIXER, LONG LEVER |
| FE-11415 | MONITOR - PACS |
| FE-47801 | SINK - SS SINGLE IN BENCH |
| FE-54520 | TELEPHONE - HANDSET, HANDSFREE |
| FE-61600 | IMG - BUCKY, CHEST |
| FE-62152 | IMG - CONSOLE CONTROL |
| FE-62401 | IMG - CONTROL BOOTH |
| FE-66000 | IMG - X-RAY TABLE, FLOATING TOP |
| FE-67000 | IMG - SCREENING (FLUOROSCOPY) IMAGING UNIT |
| FE-68400 | IMG - GENERATOR |
| FF-150 | AIR FLOWMETER |

| BIM ID | DESCRIPTION |
|----------|--|
| FF-1010 | BENCHTOP - STAINLESS STEEL WITH WET EDGE |
| FF-1090 | BENCH - LAMINATED FREE STANDING |
| FF-1480 | MONITOR BRACKET |
| FF-1650 | CHAIR - CLIENT |
| FF-4420 | CUPBOARD - UNDER BENCH DOUBLE - 900W X 870H X 600D |
| FF-4470 | CUPBOARD - WALL MOUNTED, LOCKABLE |
| FF-5824 | WASTE BIN, GENERAL |
| FF-6152 | DISPENSER - DISPOSABLE GLOVES |
| FF-6154 | DISPENSER - HAND TOWEL |
| FF-6156 | DISPENSER - SOAP |
| FF-6158 | DISPENSER - SOAP ANTISEPTIC |
| FF-11460 | KEYBOARD - SLIDE OUT |
| FF-11905 | LEAD APRON RACK |
| FF-16250 | OXYGEN FLOWMETER |
| FF-21950 | SUCTION ADAPTER |
| FF-22000 | SUCTION BOTTLE |
| S-1006 | VOICE DATA OUTLET - DOUBLE |
| S-1951 | STAFF ASSIST CALL |
| S-6055 | SPECIAL TASK LIGHT, BUILT-IN 1m LONG |

| BIM ID | DESCRIPTION |
|-----------|---|
| S-6200 | LIGHT SWITCH |
| S-7000 | MEDICAL GAS OUTLET - OXYGEN |
| S-7020 | MEDICAL GAS OUTLET - MEDICAL AIR |
| S-7040 | MEDICAL GAS OUTLET - SUCTION |
| S-8080 | EMERGENCY CALL |
| S-9000 | GENERAL POWER OUTLET - SINGLE |
| S-9001 | GENERAL POWER OUTLET - DOUBLE |
| S-9010 | EMERGENCY POWER OUTLET - SINGLE |
| S-9030 | CARDIAC PROTECTED |
| S-9040 | BODY PROTECTED |
| S-11000 | MEDICAL SERVICES PANEL |
| S-12030 | LEAD LINING |
| S-9001650 | GENERAL POWER OUTLET - DOUBLE (RCD PROTECTED) |



| REV | DESCRIPTION | DATE |
|-----|--------------------------------|------------|
| 2 | This RLS has been redocumented | 01.03.2016 |

FOR GUIDANCE

| SCALE | RLS Room Code | Room Tag | REV |
|-------------|---------------|----------|-----|
| 1 : 50 @ A3 | SCRN | 1.187.1 | 2 |

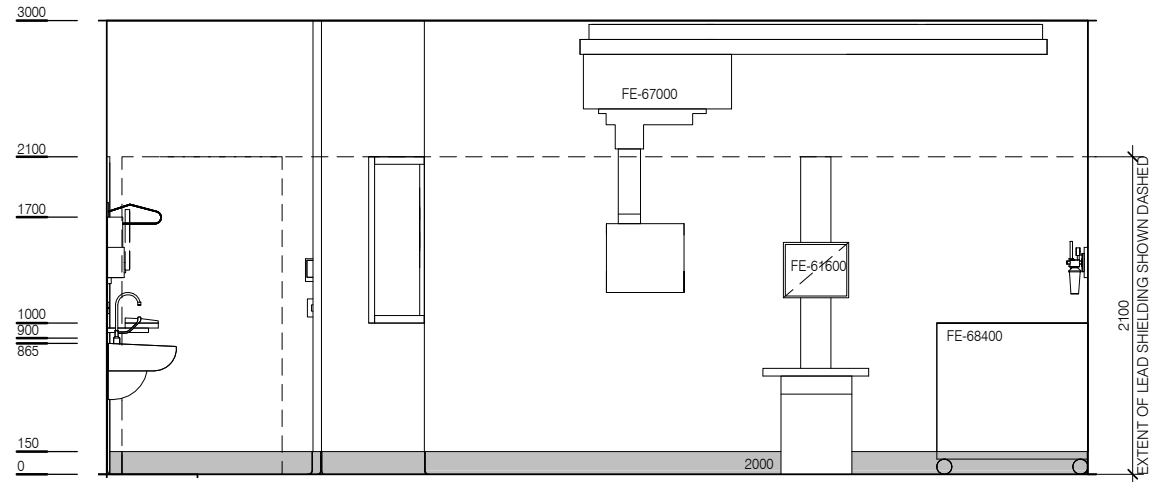
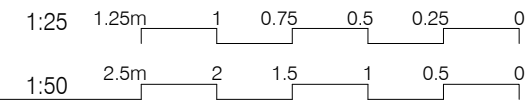
AUSTRALASIAN HFG STANDARD COMPONENTS

Room Layout Sheet

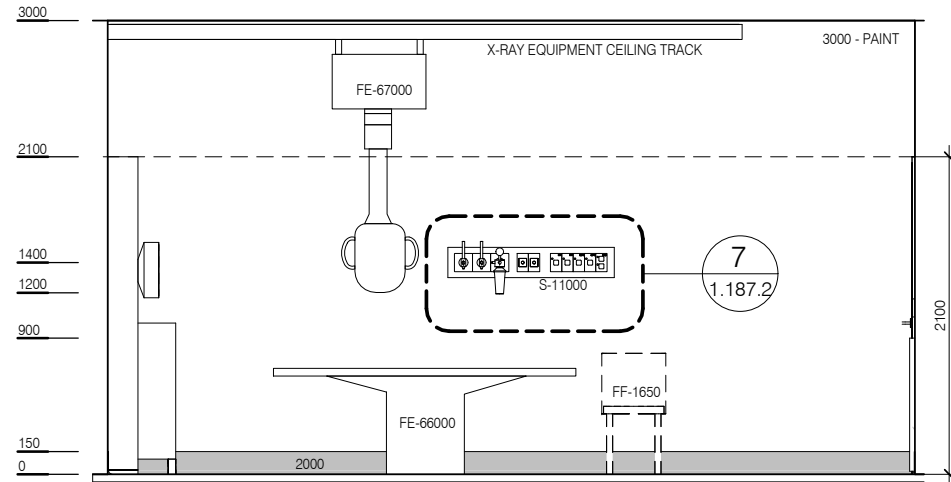
RLS Room Code: **SCRN**

Room Name:

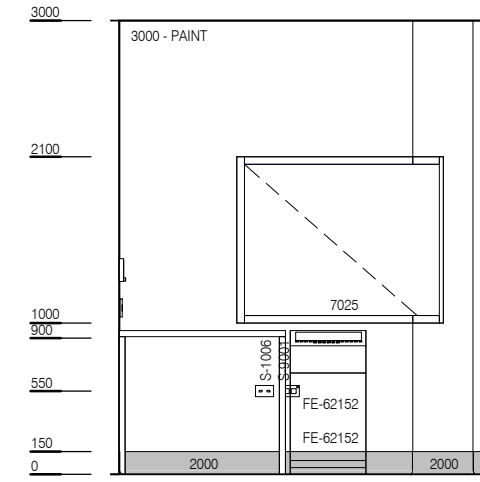
SCREENING ROOM (FLUOROSCOPY)



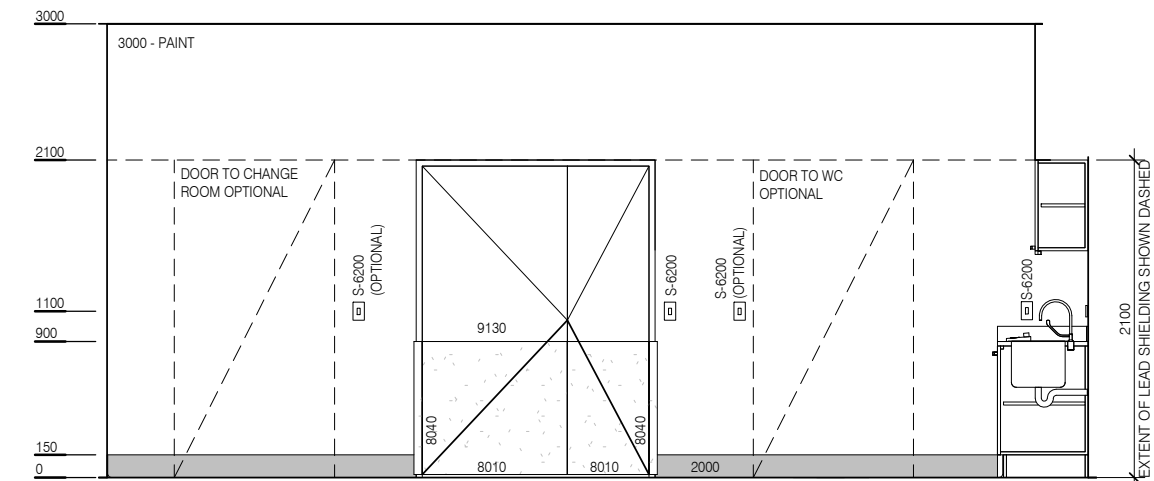
ELEVATION 1



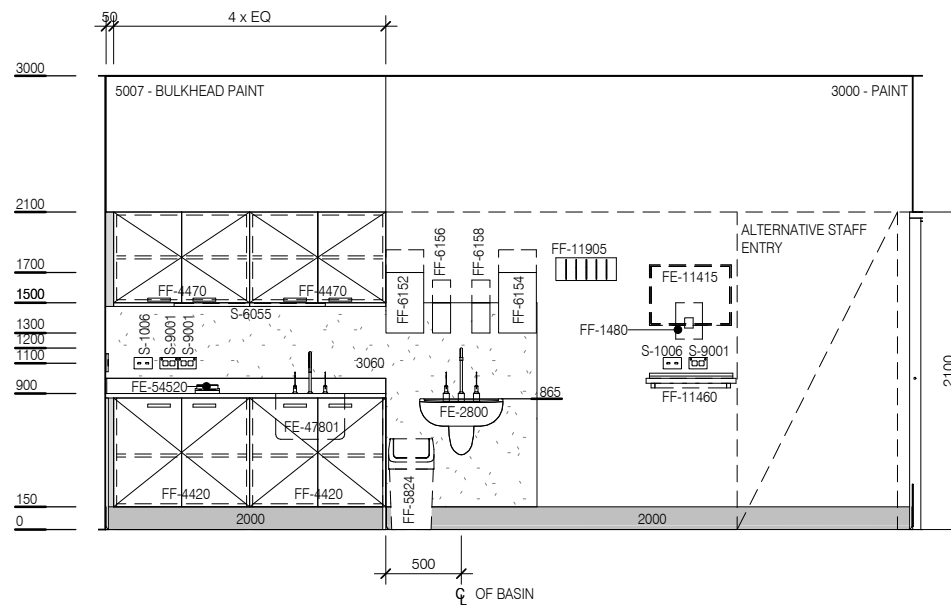
ELEVATION 2



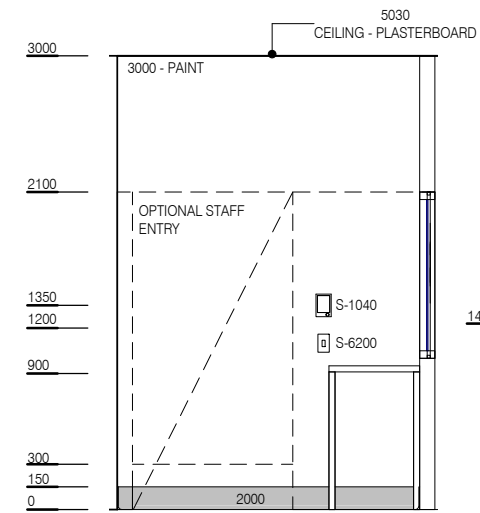
ELEVATION 5



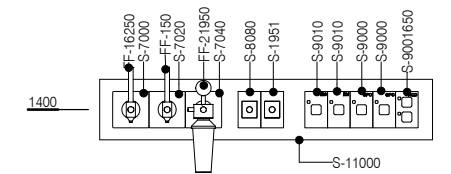
ELEVATION 3



ELEVATION 4



ELEVATION 6



ELEVATION 7 (1 : 25 @ A3)

| BIM ID | DESCRIPTION |
|----------|--|
| 2000 | FLOOR VINYL COVERED SKIRTING |
| 3060 | WALL VINYL - 3060 |
| 7025 | OBSERVATION LEAD LINED - RADIATION WINDOW |
| 8000 | DOOR PROTECTION - KICKPLATE - 8000 |
| 8010 | DOOR PROTECTION |
| 8040 | DOOR PROTECTION - FRAME |
| FE-2800 | BASIN - HANDWASH, TYPE B |
| FE-4045 | TAP MIXER, LONG LEVER |
| FE-11415 | MONITOR - PACS |
| FE-47801 | SINK - SS SINGLE IN BENCH |
| FE-54520 | TELEPHONE - HANDSET, HANDSFREE |
| FE-61600 | IMG - BUCKY, CHEST |
| FE-62152 | IMG - CONSOLE CONTROL |
| FE-62401 | IMG - CONTROL BOOTH |
| FE-66000 | IMG - X-RAY TABLE, FLOATING TOP |
| FE-67000 | IMG - SCREENING (FLUOROSCOPY) IMAGING UNIT |
| FE-68400 | IMG - GENERATOR |
| FF-150 | AIR FLOWMETER |

| BIM ID | DESCRIPTION |
|----------|--|
| FF-1010 | BENCHTOP - STAINLESS STEEL WITH WET EDGE |
| FF-1090 | BENCH - LAMINATED FREE STANDING |
| FF-1480 | MONITOR BRACKET |
| FF-1650 | CHAIR - CLIENT |
| FF-4420 | CUPBOARD - UNDER BENCH DOUBLE - 900W X 870H X 600D |
| FF-4470 | CUPBOARD - WALL MOUNTED, LOCKABLE |
| FF-5824 | WASTE BIN, GENERAL |
| FF-6152 | DISPENSER - DISPOSABLE GLOVES |
| FF-6154 | DISPENSER - HAND TOWEL |
| FF-6156 | DISPENSER - SOAP |
| FF-6158 | DISPENSER - SOAP ANTISEPTIC |
| FF-11460 | KEYBOARD - SLIDE OUT |
| FF-11905 | LEAD APRON RACK |
| FF-16250 | OXYGEN FLOWMETER |
| FF-21950 | SUCTION ADAPTER |
| FF-22000 | SUCTION BOTTLE |
| S-1006 | VOICE DATA OUTLET - DOUBLE |
| S-1951 | STAFF ASSIST CALL |
| S-6055 | SPECIAL TASK LIGHT, BUILT-IN 1m LONG |

| BIM ID | DESCRIPTION |
|-----------|---|
| S-6200 | LIGHT SWITCH |
| S-7000 | MEDICAL GAS OUTLET - OXYGEN |
| S-7020 | MEDICAL GAS OUTLET - MEDICAL AIR |
| S-7040 | MEDICAL GAS OUTLET - SUCTION |
| S-8080 | EMERGENCY CALL |
| S-9000 | GENERAL POWER OUTLET - SINGLE |
| S-9001 | GENERAL POWER OUTLET - DOUBLE |
| S-9010 | EMERGENCY POWER OUTLET - SINGLE |
| S-9030 | CARDIAC PROTECTED |
| S-9040 | BODY PROTECTED |
| S-11000 | MEDICAL SERVICES PANEL |
| S-12030 | LEAD LINING |
| S-9001650 | GENERAL POWER OUTLET - DOUBLE (RCD PROTECTED) |



| REV | DESCRIPTION | DATE |
|-----|--------------------------------|------------|
| 2 | This RLS has been redocumented | 01.03.2016 |

FOR GUIDANCE

| SCALE | RLS Room Code | Room Tag | REV |
|-------------|---------------|----------|-----|
| 1 : 50 @ A3 | SCRN | 1.187.2 | 2 |