

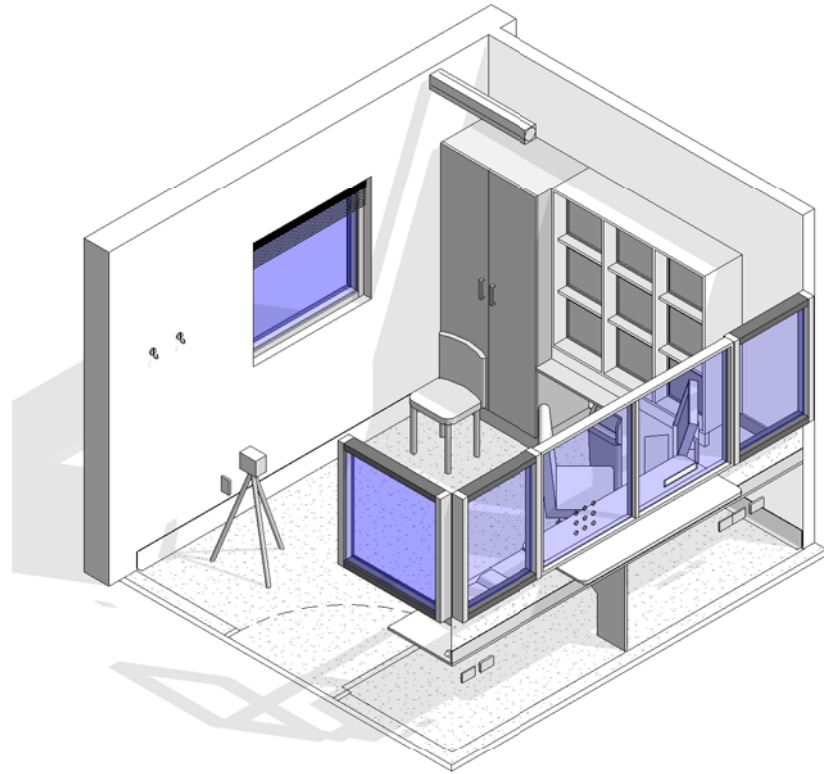
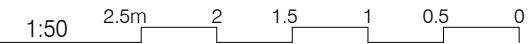
AUSTRALASIAN HFG STANDARD COMPONENTS

Room Layout Sheet

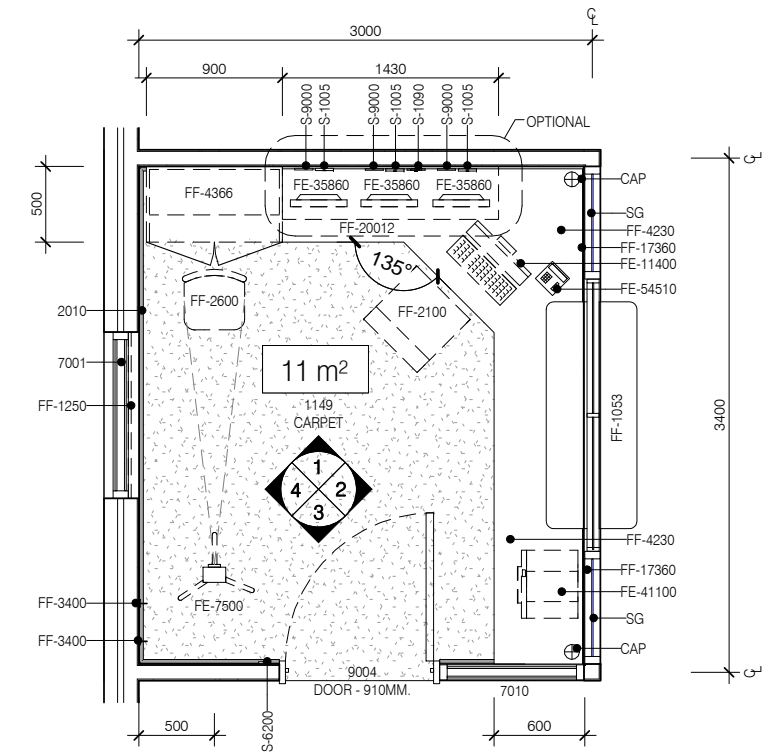
RLS Room Code: **SECR-10**

Room Name:

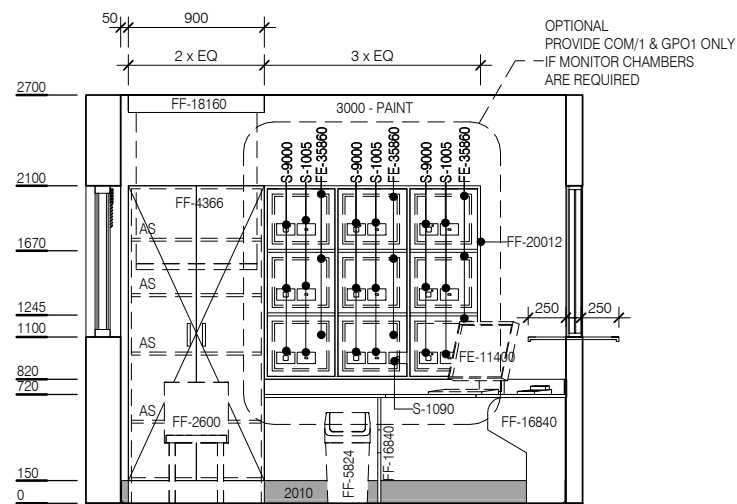
SECURITY ROOM, 10m²



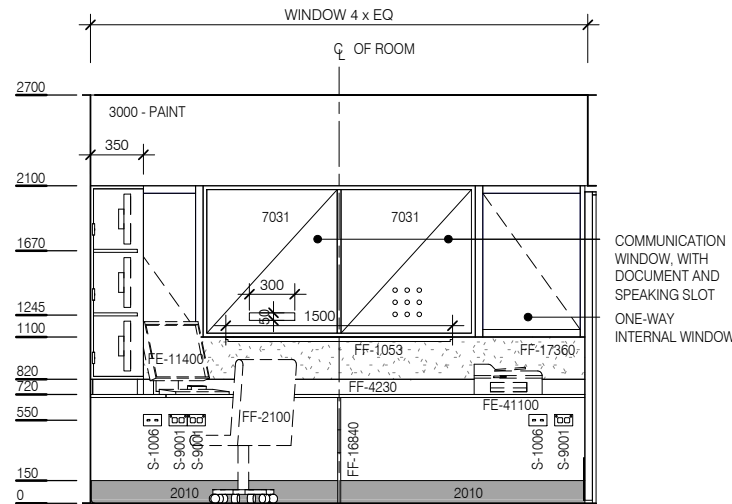
BIMID	DESCRIPTION
2010	SKIRTING VINYL, FEATHERED EDGED, 150mmH
7001	WINDOWS
7010	7010 - INTERNAL OBSERVATION
7031	SECURITY SCREEN - SAFETY GLASS
8000	DOOR PROTECTION - KICKPLATE - 8000
CAP	CABLE ACCESS CAP
FE-7500	CAMERA - ID PHOTO
FE-11400	COMPUTER - PC & MONITOR
FE-35860	MONITOR - CCTV
FE-41100	PRINTER - NETWORKED
FE-54510	TELEPHONE - HANDSET, STANDARD
FF-1053	LAMINATED COUNTERTOP TO COMMUNICATION WINDOW
FF-1250	EXTERNAL WINDOW DRESSING - FF-1250
FF-2100	CHAIR - ERGONOMIC OFFICE
FF-2600	CHAIR - VISITOR OFFICE
FF-3400	COAT HOOK
FF-4230	LAMINATED COUNTERTOP - SECURITY ROOM1
FF-4366	CUPBOARD - DBL FULL HEIGHT 900w, 500D
FF-5824	WASTE BIN, GENERAL
FF-16840	PARTITION - LAMINATE
FF-17360	PINBOARD - FABRIC COVERED
FF-18160	PROJECTOR SCREEN
FF-20012	ADJUSTABLE SHELVES 3x3
S-1005	VOICE DATA OUTLET - SINGLE
S-1006	VOICE DATA OUTLET - DOUBLE
S-1090	TV - MATV
S-6200	LIGHT SWITCH
S-9000	GENERAL POWER OUTLET - SINGLE
S-9001	GENERAL POWER OUTLET - DOUBLE
SG	SAFETY GLASS



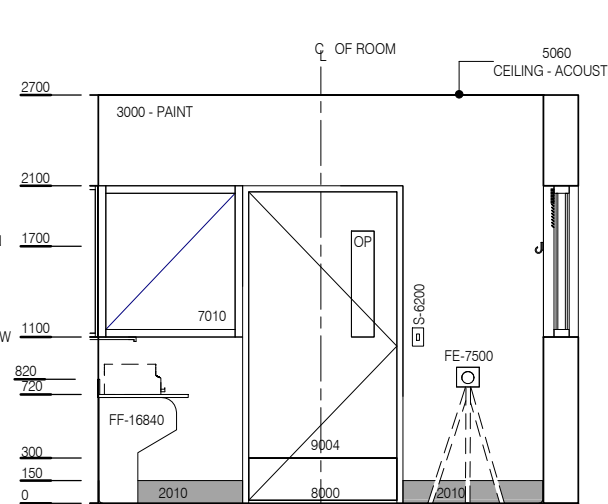
PLAN



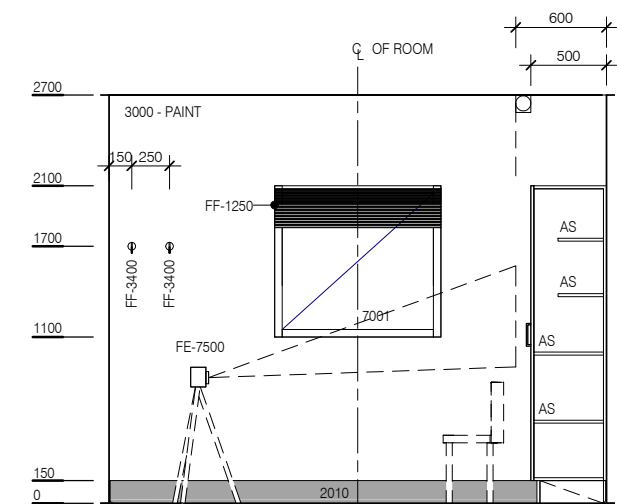
ELEVATION 1



ELEVATION 2



ELEVATION 3



ELEVATION 4



REV	DESCRIPTION	DATE
2	This RLS has been redocumented	01.03.2016

FOR GUIDANCE

SCALE	RLS Room Code	Room Tag	REV
1 : 50 @ A3	SECR-10	1.192	2