

# AUSTRALASIAN HFG STANDARD COMPONENTS

Room Layout Sheet

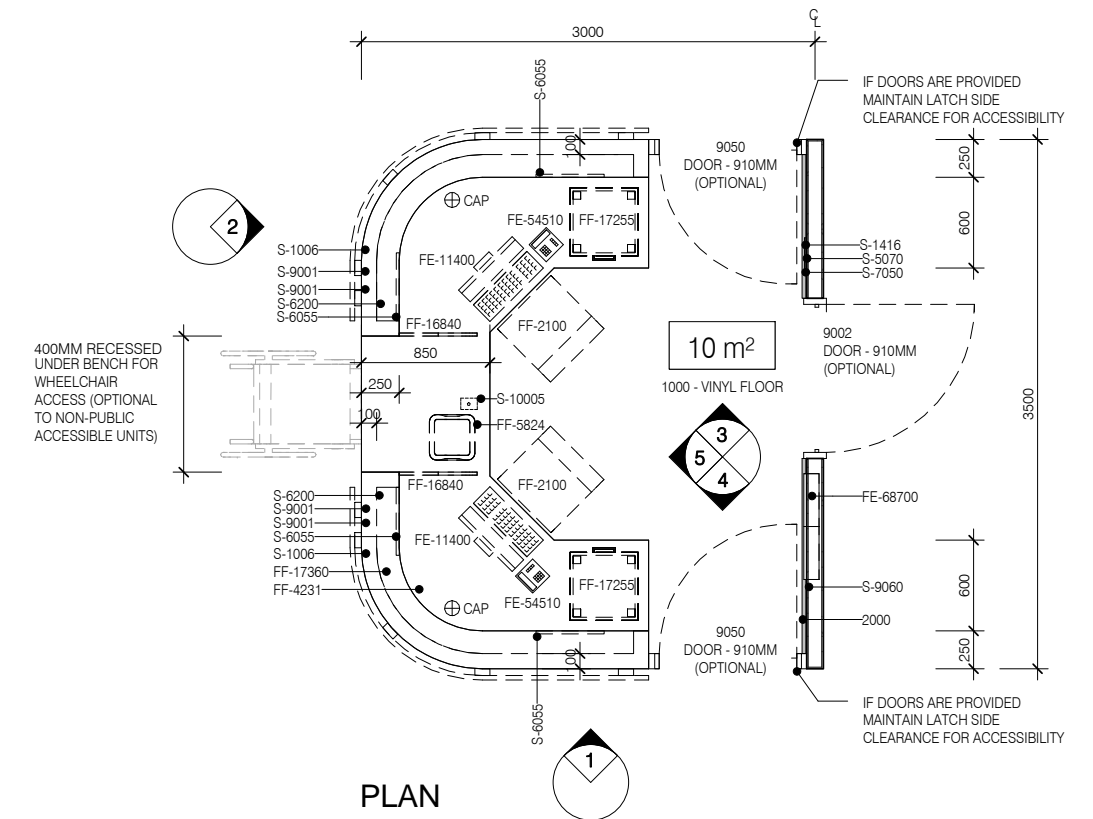
RLS Room Code: **SSTN-10**

1:50 2.5m 2 1.5 1 0.5 0

Room Name:

**STAFF STATION, 10m<sup>2</sup>**

BIMID	DESCRIPTION
2000	FLOOR VINYL COVED SKIRTING
4010	STAFF STATION - WALL PROTECTION
CAP	CABLE ACCESS CAP
FE-11400	COMPUTER - PC & MONITOR
FE-54510	TELEPHONE - HANDSET, STANDARD
FE-68700	XRAY VIEWER - 2 SCREEN
FF-2100	CHAIR - ERGONOMIC OFFICE
FF-4231	STAFF STATION - COUNTER TOP SSTN-10
FF-5824	WASTE BIN, GENERAL
FF-16840	PARTITION - LAMINATE
FF-17255	PEDESTAL FILING UNIT
FF-17360	PINBOARD - FABRIC COVERED
FF-21251	STAFF STATION - COUNTER CARCASS SSTN-10
S-1006	VOICE DATA OUTLET - DOUBLE
S-1416	LIGHT CONTROL PANEL
S-5070	TEMPERATURE CONTROL
S-6055	SPECIAL TASK LIGHT, BUILT-IN
S-6200	LIGHT SWITCH - PELMET TASK LIGHT
S-7050	GAS ALARM PANEL
S-9001	GENERAL POWER OUTLET - DOUBLE
S-9060	GENERAL POWER OUTLET - SPECIAL FOR EQUIPMENT
S-10005	DURESS ALARM



REV	DESCRIPTION	DATE
3	This RLS has been redocumented	01.03.2016

**FOR GUIDANCE**

SCALE	RLS Room Code	Room Tag	REV
1 : 50 @ A3	SSTN-10	1.206.1	3

# AUSTRALASIAN HFG STANDARD COMPONENTS

Room Layout Sheet

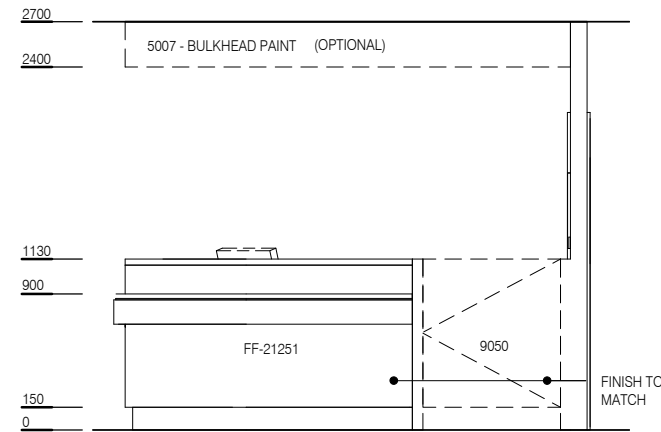
RLS Room Code: **SSTN-10**

1:50

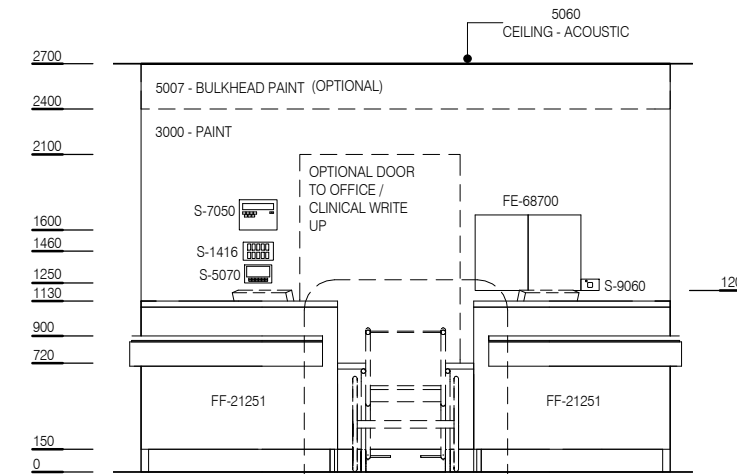
Room Name:

**STAFF STATION, 10m<sup>2</sup>**

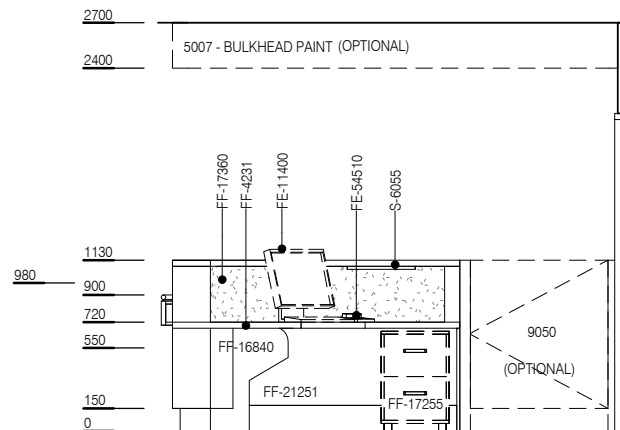
BIMID	DESCRIPTION
2000	FLOOR VINYL COVERED SKIRTING
4010	STAFF STATION - WALL PROTECTION
CAP	CABLE ACCESS CAP
FE-11400	COMPUTER - PC & MONITOR
FE-54510	TELEPHONE - HANDSET, STANDARD
FE-68700	XRAY VIEWER - 2 SCREEN
FF-2100	CHAIR - ERGONOMIC OFFICE
FF-4231	STAFF STATION - COUNTER TOP SSTN-10
FF-5824	WASTE BIN, GENERAL
FF-16840	PARTITION - LAMINATE
FF-17255	PEDESTAL FILING UNIT
FF-17360	PINBOARD - FABRIC COVERED
FF-21251	STAFF STATION - COUNTER CARCASS SSTN-10
S-1006	VOICE DATA OUTLET - DOUBLE
S-1416	LIGHT CONTROL PANEL
S-5070	TEMPERATURE CONTROL
S-6055	SPECIAL TASK LIGHT, BUILT-IN
S-6200	LIGHT SWITCH - PELMET TASK LIGHT
S-7050	GAS ALARM PANEL
S-9001	GENERAL POWER OUTLET - DOUBLE
S-9060	GENERAL POWER OUTLET - SPECIAL FOR EQUIPMENT
S-10005	DURESS ALARM



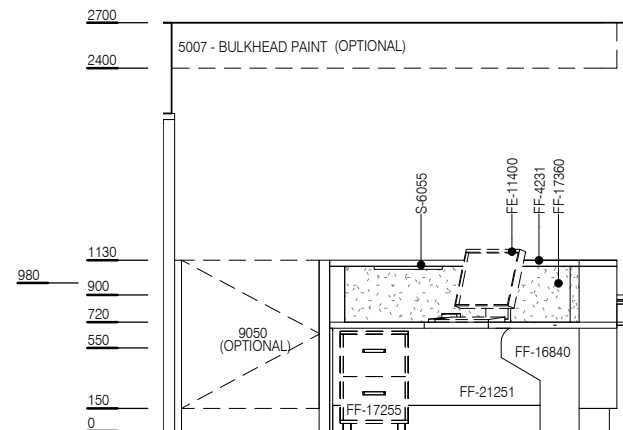
**ELEVATION 1**



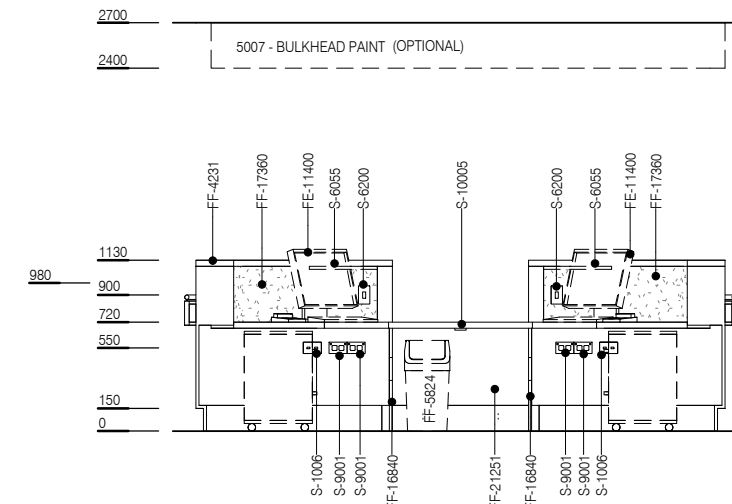
**ELEVATION 2**



**ELEVATION 3**



**ELEVATION 4**



**ELEVATION 5**



REV	DESCRIPTION	DATE
3	This RLS has been redocumented	01.03.2016

**FOR GUIDANCE**

SCALE	RLS Room Code	Room Tag	REV
1 : 50 @ A3	SSTN-10	1.206.2	3