

AUSTRALASIAN HFG STANDARD COMPONENTS

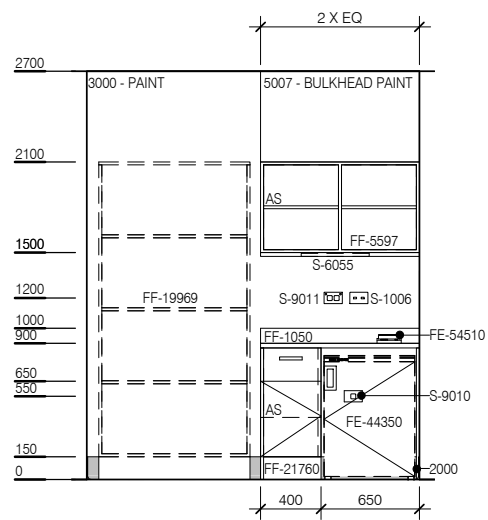
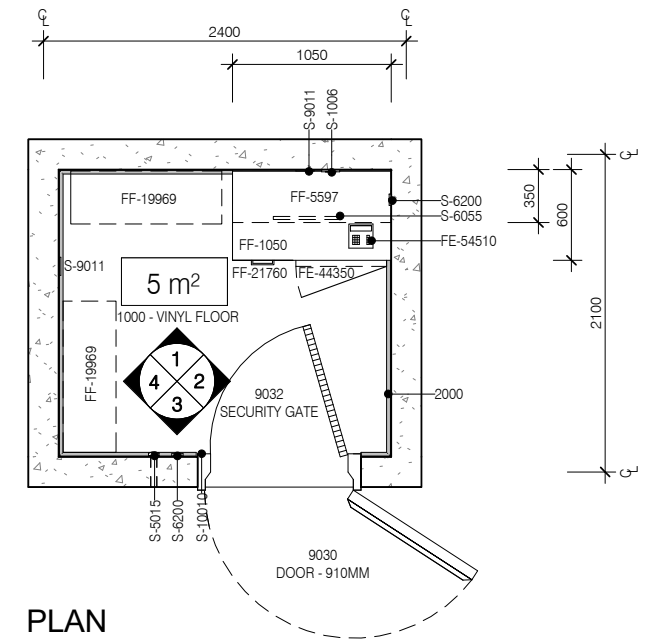
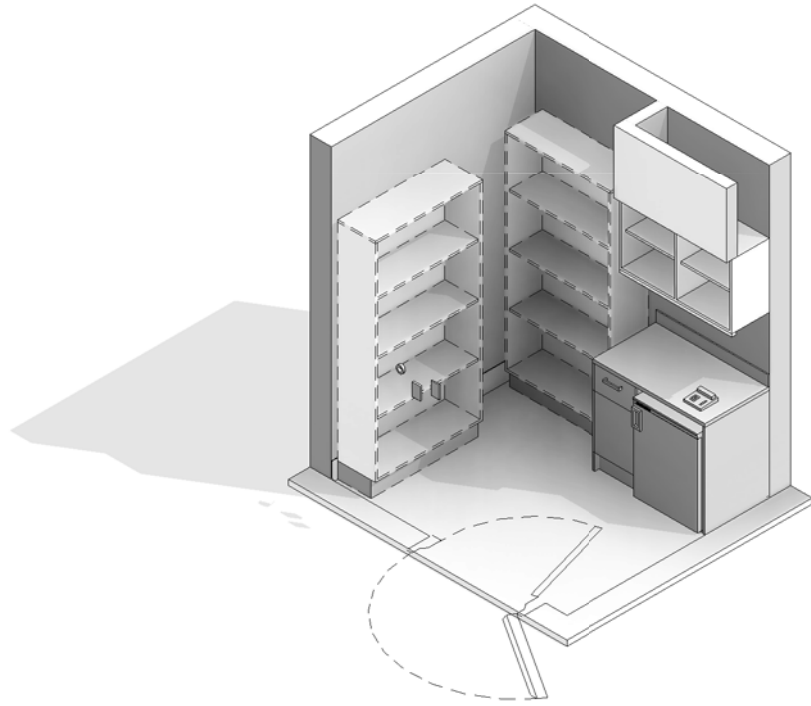
Room Layout Sheet

RLS Room Code: **STAD**

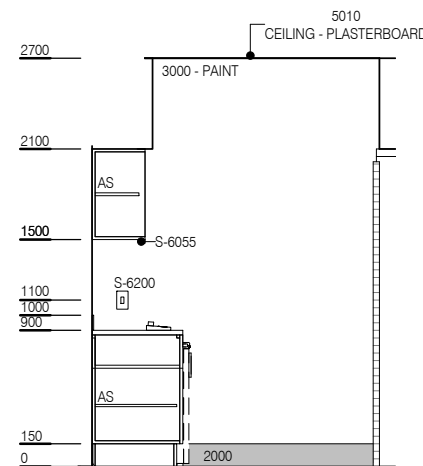
Room Name:

1:50 2.5m 2 1.5 1 0.5 0
STORE - ACCOUNTABLE DRUGS

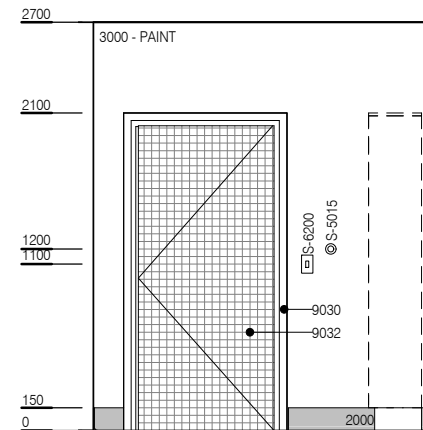
BIMID	DESCRIPTION
2000	FLOOR VINYL COVERED SKIRTING
9032	SECURITY GATE
FE-44350	REFRIGERATOR - DRUGS
FE-54510	TELEPHONE - HANDSET, STANDARD
FF-1050	BENCHTOP - LAMINATE
FF-5597	ADJUSTABLE SHELVES 2x2
FF-19969	SHELVING - PHARMACY
FF-21760	CUPBOARD AND DRAWER - UNDERBENCH 400W X 870 H X 600D
S-1006	VOICE DATA OUTLET - DOUBLE
S-5015	VENTILATION PORT
S-6055	SPECIAL TASK LIGHT, BUILT-IN
S-6200	LIGHT SWITCH
S-9010	EMERGENCY POWER OUTLET - SINGLE
S-9011	EMERGENCY POWER OUTLET - DOUBLE
S-10010	DURESS ALARM TO LOCK MECHANISM



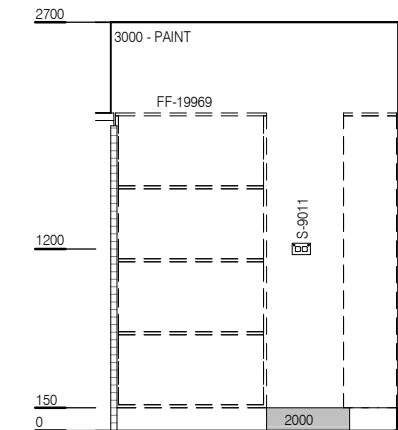
ELEVATION 1



ELEVATION 2



ELEVATION 3



ELEVATION 4



REV	DESCRIPTION	DATE
2	This RLS has been redocumented	01.03.2016

FOR GUIDANCE

SCALE	RLS Room Code	Room Tag	REV
1 : 50 @ A3	STAD	1.210	2