

AUSTRALASIAN HFG STANDARD COMPONENTS

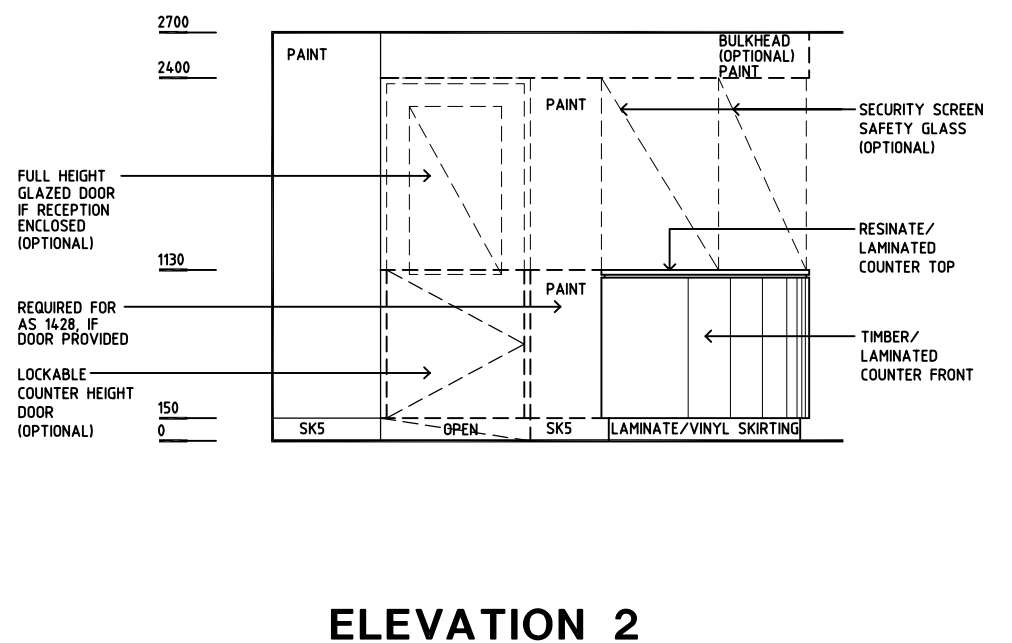
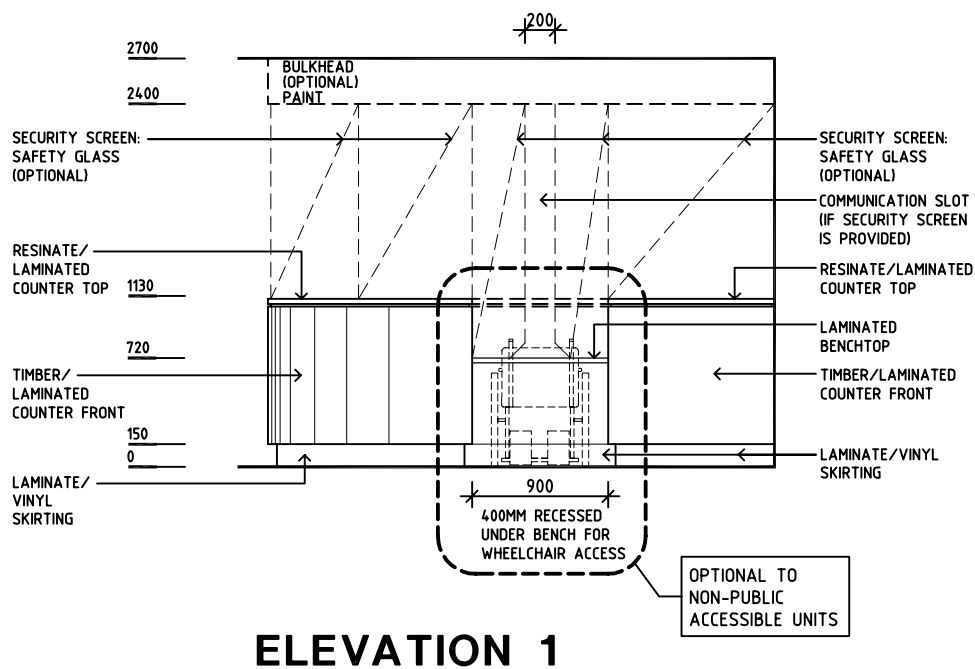
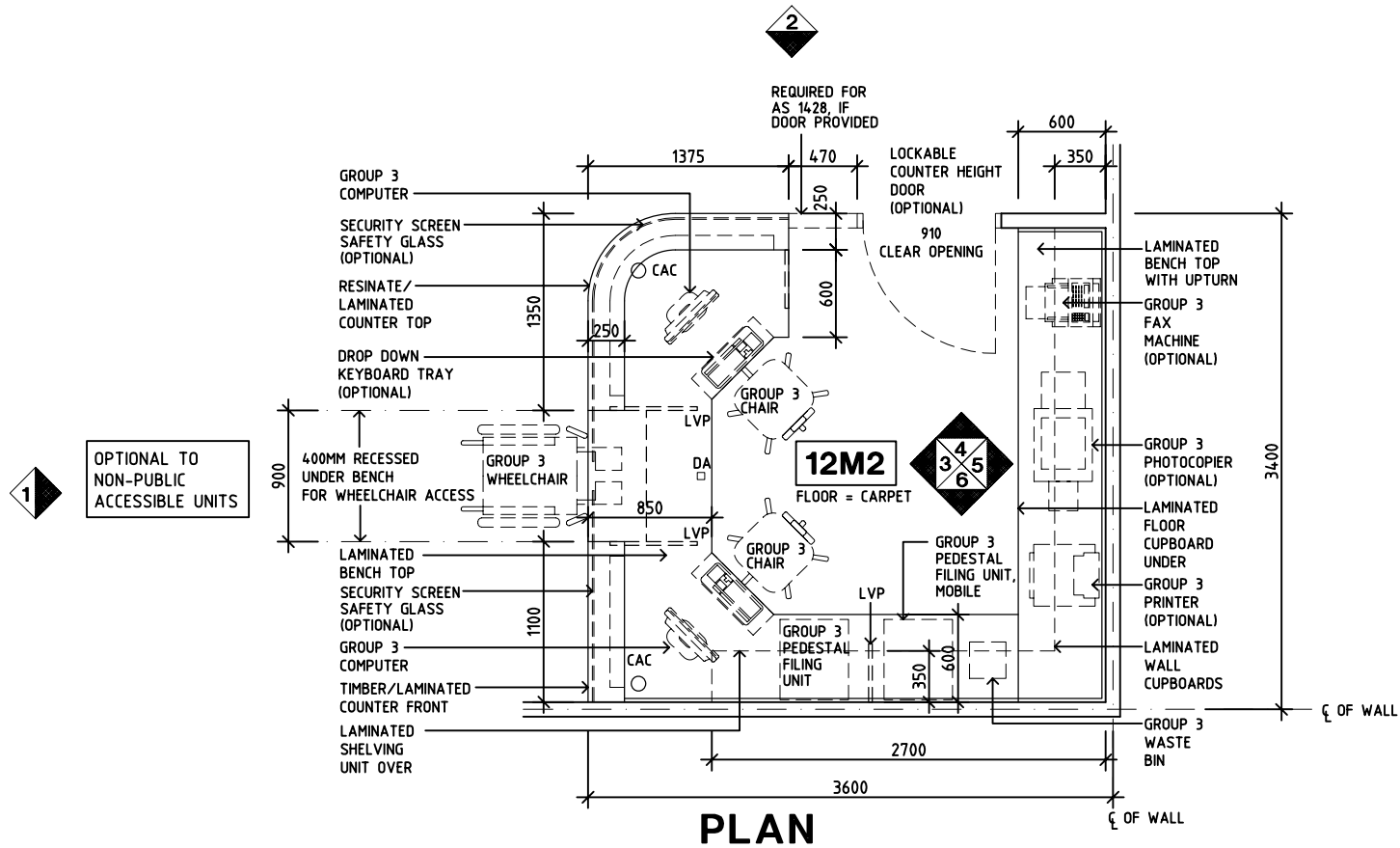
Room Layout Sheet

Room Name **Reception/ Clerical, 12m2**

RLS Room Code **RECL-12**

RDS Room Code **RECL-12**

- AS ADJUSTABLE SHELF
- CAC CABLE ACCESS CAP
- COM/2 COMMUNICATIONS/DATA OUTLET, DOUBLE
- DA DURESS ALARM
- GPO/2 GENERAL PURPOSE OUTLET, DOUBLE
- LS/P LIGHT SWITCH - PELMET TASK LIGHT
- LVP LAMINATED VERTICAL SUPPORT PANEL
- PB PINBOARD
- SK5 VINYL FEATHER EDGE SKIRTING



| REV | DESCRIPTION | DATE | BY | REV | DESCRIPTION | DATE | BY | REV | DESCRIPTION | DATE | BY |
|-----|--|----------|----|-----|-------------|------|----|-----|-------------|------|----|
| 1 | FIRST ISSUE | 29.7.05 | HS | | | | | | | | |
| 2 | 2009 AUS HFG REVIEW, GENERAL REVISIONS | 10.03.09 | KC | | | | | | | | |

Australasian HFG

AHIA in association with
UNSW



| DESIGNED | APPROVED | SCALE(S) | ZONE(S) |
|--------------------------|----------|------------------------------|---------|
| JMH/HS | DB | 150 in A3 | |
| CAD FILE NAME RECL-12 | | PAPER DRAWING ID RECL-12a | |

AUSTRALASIAN HFG STANDARD COMPONENTS

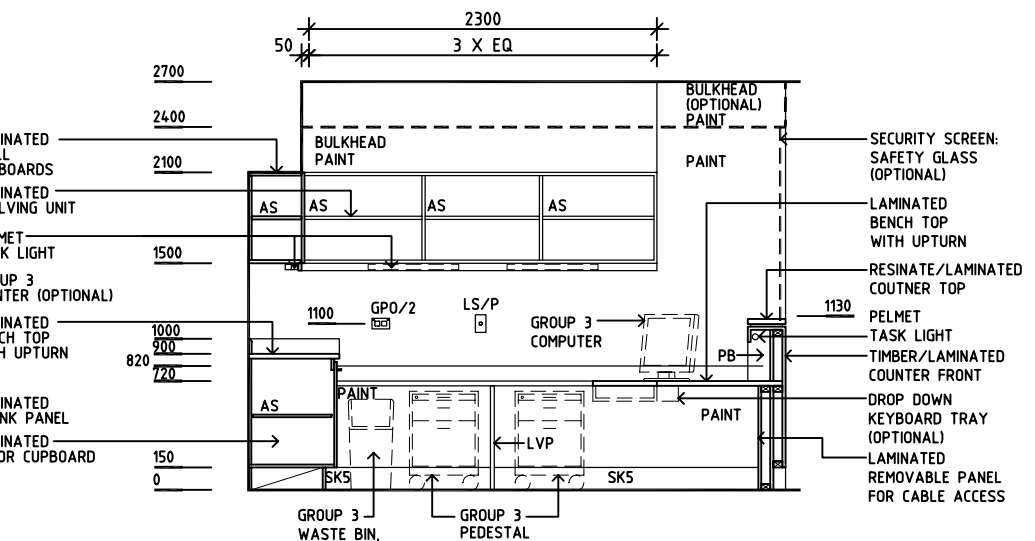
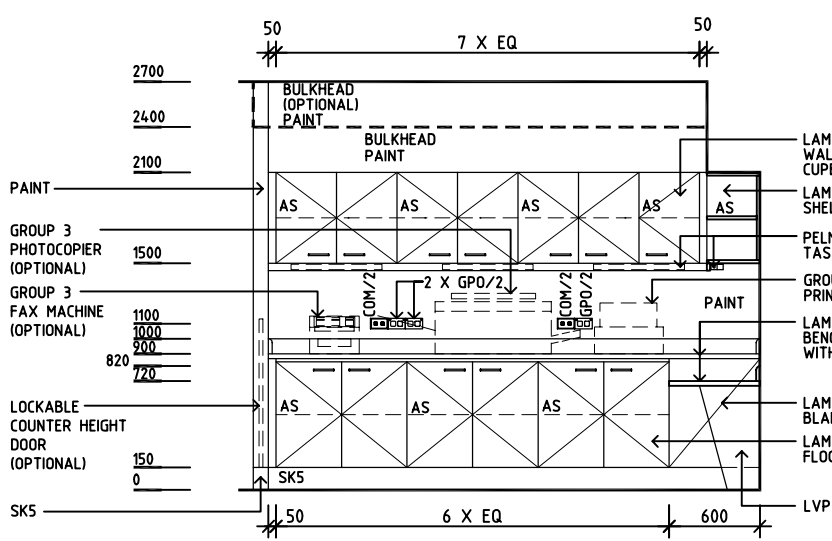
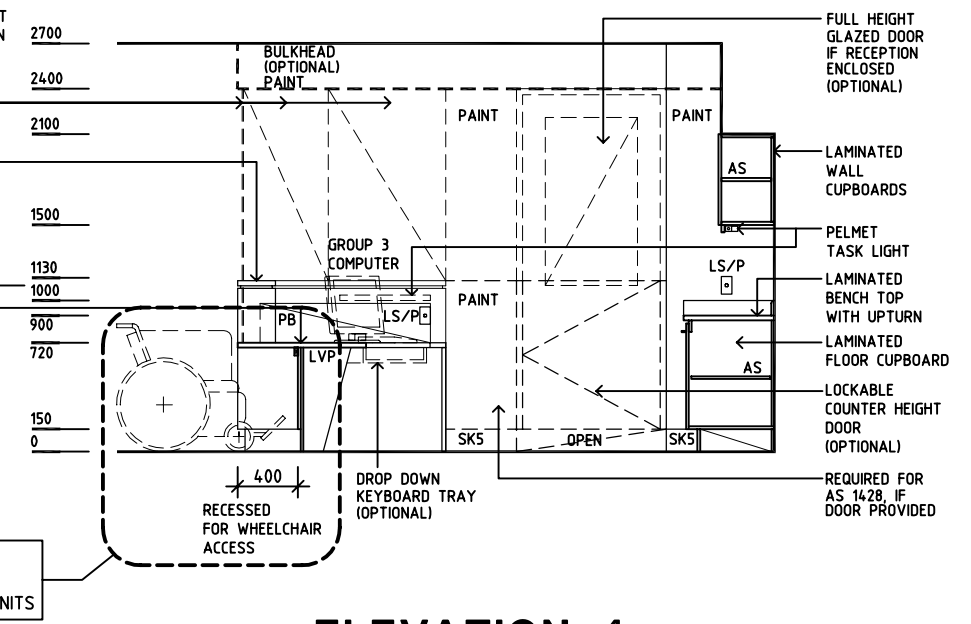
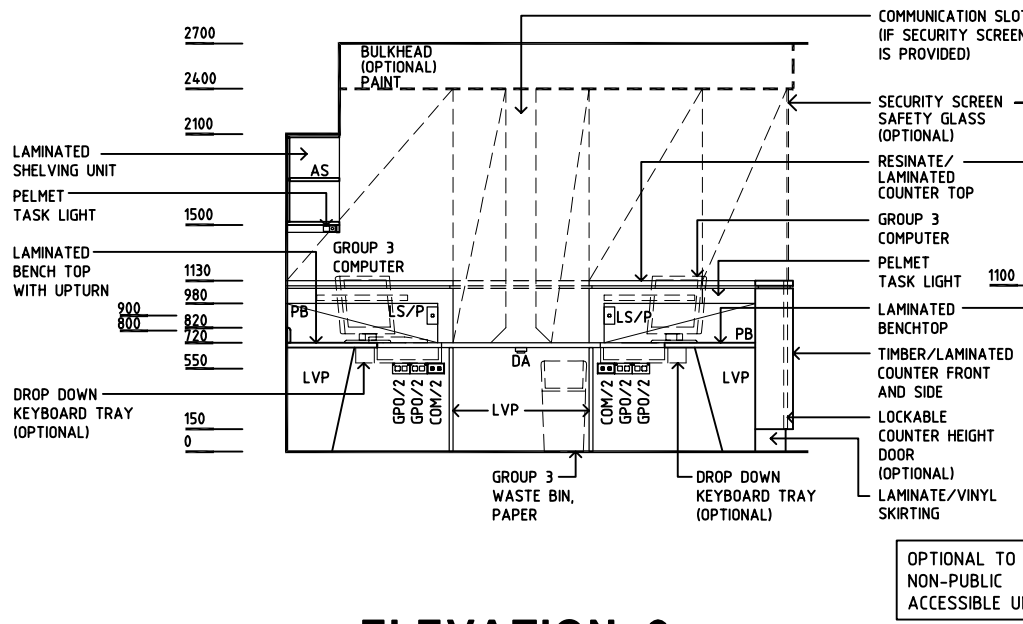
Room Layout Sheet

Room Name **Reception/ Clerical, 12m2**

RLS Room Code **RECL-12**

RDS Room Code **RECL-12**

- AS ADJUSTABLE SHELF
- CAC CABLE ACCESS CAP
- COM/2 COMMUNICATIONS/DATA OUTLET, DOUBLE
- DA DURESS ALARM
- GPO/2 GENERAL PURPOSE OUTLET, DOUBLE
- LS/P LIGHT SWITCH - PELMET TASK LIGHT
- LVP LAMINATED VERTICAL SUPPORT PANEL
- PB PINBOARD
- SK5 VINYL FEATHER EDGE SKIRTING



| REV | DESCRIPTION | DATE | BY | REV | DESCRIPTION | DATE | BY | REV | DESCRIPTION | DATE | BY |
|-----|--|----------|----|-----|-------------|------|----|-----|-------------|------|----|
| 1 | FIRST ISSUE | 29.7.05 | HS | | | | | | | | |
| 2 | 2009 AUS HFG REVIEW, GENERAL REVISIONS | 10.03.09 | KC | | | | | | | | |

| | | | | | | |
|---------------|--|--|------------------|----------|-----------|---------|
| | | | DESIGNED | APPROVED | SCALE(S) | ZONE(S) |
| | | | JMH/HS | DB | 150 in A3 | |
| CAD FILE NAME | | | PAPER DRAWING ID | | | |
| RECL-12 | | | RECL-12b | | | |