

# AUSTRALASIAN HFG STANDARD COMPONENTS

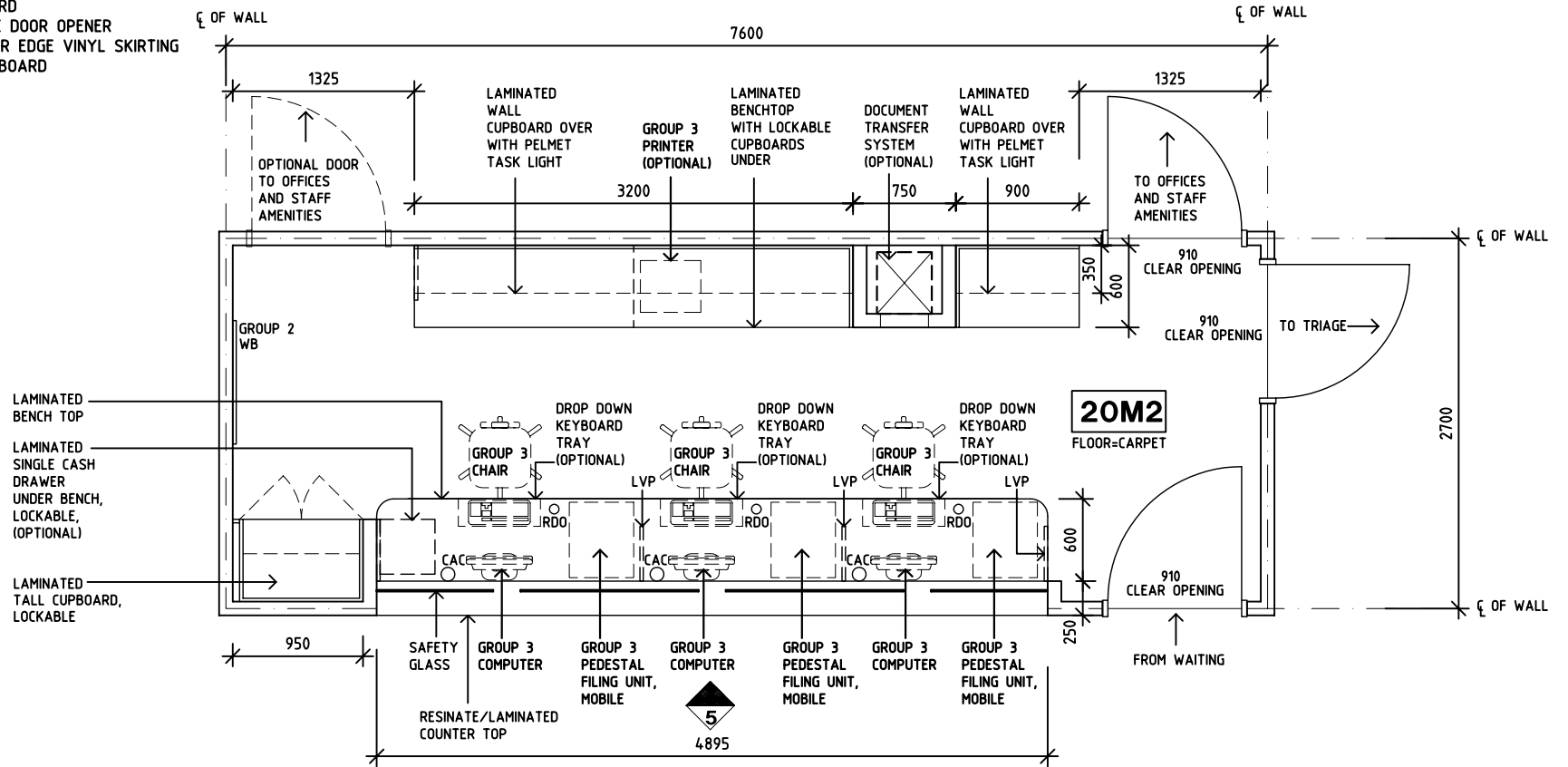
Room Layout Sheet

Room Name Reception (Emergency), 20m2

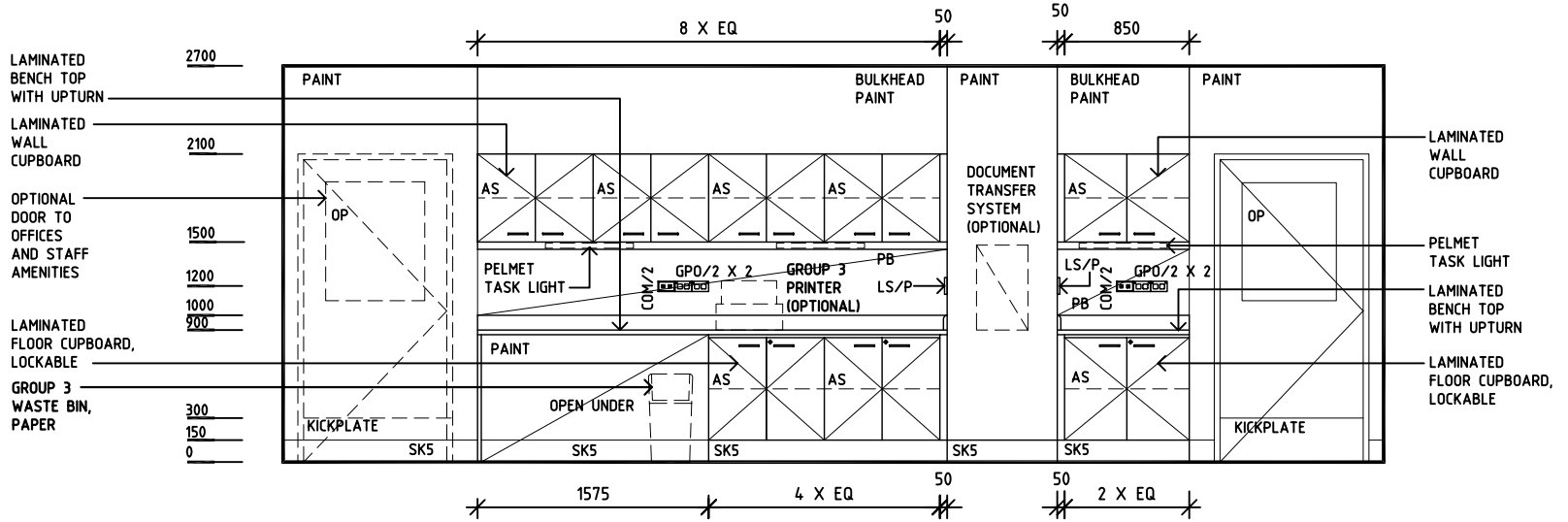
RLS Room Code REC-E

RDS Room Code REC-E

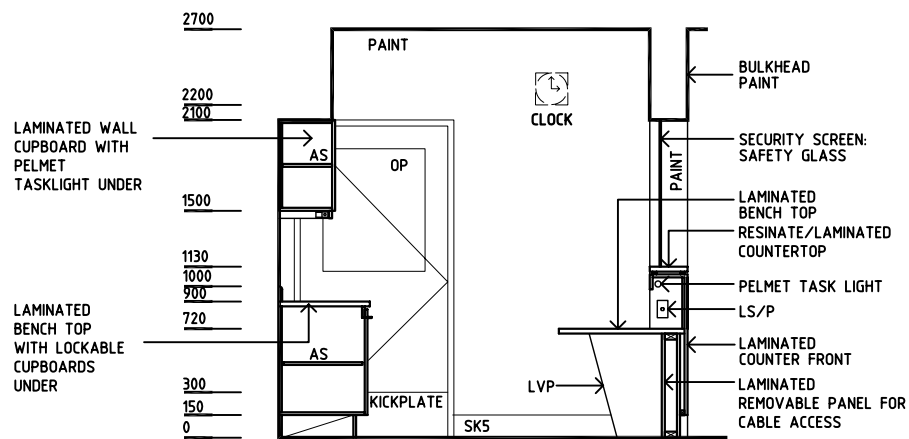
- AS ADJUSTABLE SHELF
- CAC CABLE ACCESS CAP
- COM/1 COMMUNICATIONS OUTLET - SINGLE
- COM/2 COMMUNICATIONS OUTLET - DOUBLE
- DA DURESS ALARM
- GPO/1 GENERAL POWER OUTLET - SINGLE
- GPO/2 GENERAL POWER OUTLET - DOUBLE
- LS/R LIGHT SWITCH - ROOM
- LS/P LIGHT SWITCH - PELMET TASK LIGHT
- LVP LAMINATED VERTICAL PANEL
- OP OBSERVATION PANEL
- PB PINBOARD
- RDO REMOTE DOOR OPENER
- SK5 FEATHER EDGE VINYL SKIRTING
- WB WHITE BOARD



PLAN



ELEVATION 1



ELEVATION 2

REV	DESCRIPTION	DATE	BY	REV	DESCRIPTION	DATE	BY	REV	DESCRIPTION	DATE	BY
1	FIRST ISSUE	29.07.05	HS								

Australasian **HFG**

HCAMC in association with  
**UNSW**

HPI

DESIGNED	APPROVED	SCALE(S)	ZONE(S)
JMH/BJ	DB	1:50 in A3	
CAD FILE NAME REC-E		PAPER DRAWING ID REC-Ea	

# AUSTRALASIAN HFG STANDARD COMPONENTS

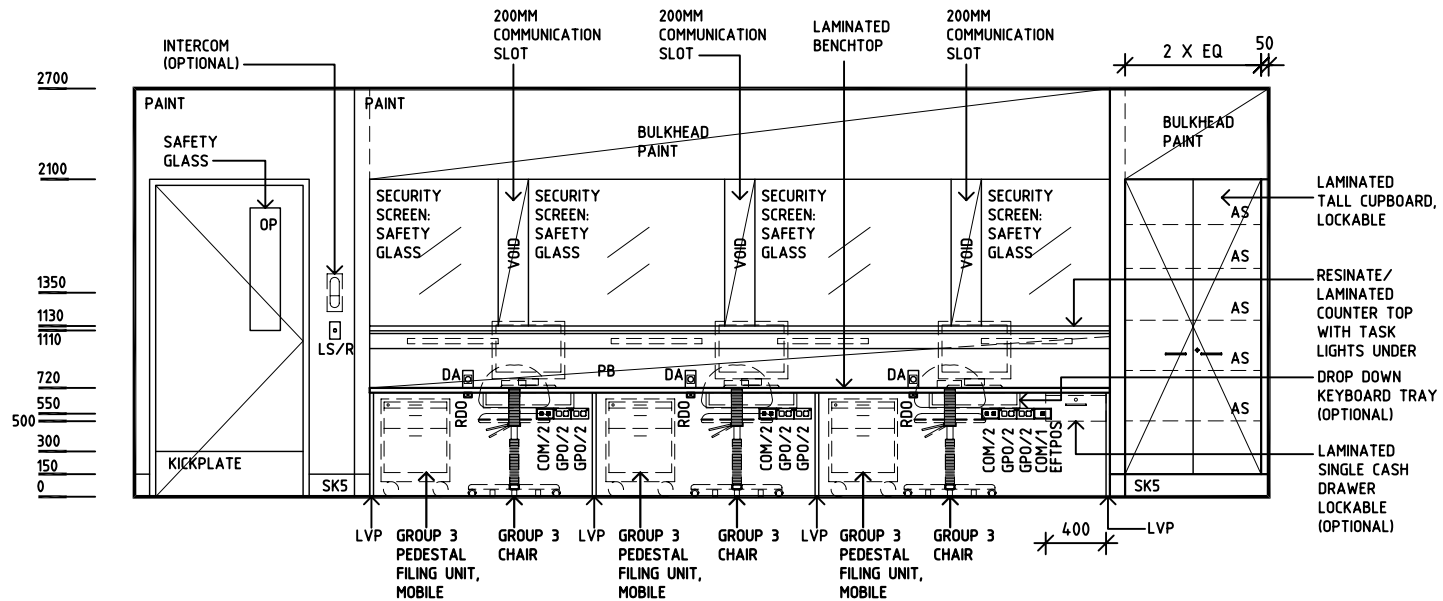
Room Layout Sheet

Room Name Reception (Emergency), 20m2

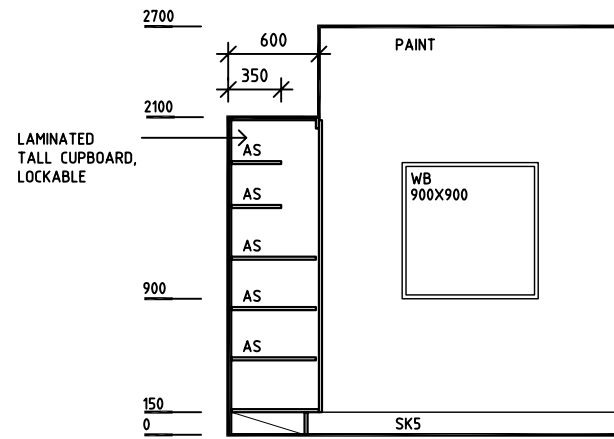
RLS Room Code REC-E

RDS Room Code REC-E

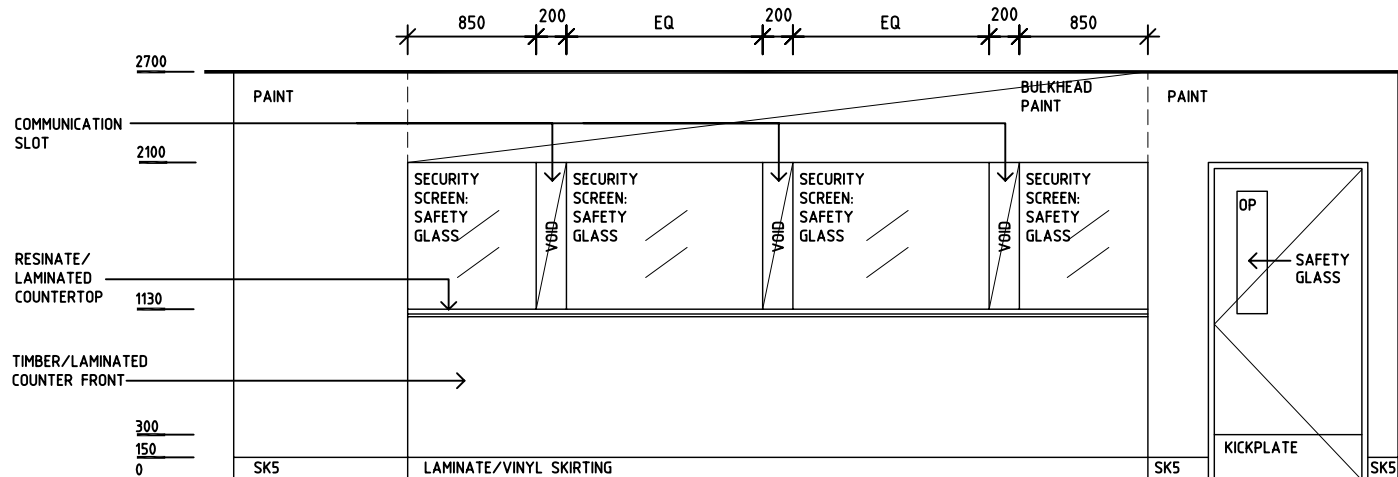
- AS ADJUSTABLE SHELF
- CAC CABLE ACCESS CAP
- COM/1 COMMUNICATIONS OUTLET - SINGLE
- COM/2 COMMUNICATIONS OUTLET - DOUBLE
- DA DURESS ALARM
- GPO/1 GENERAL POWER OUTLET - SINGLE
- GPO/2 GENERAL POWER OUTLET - DOUBLE
- LS/R LIGHT SWITCH - ROOM
- LS/P LIGHT SWITCH - PELMET TASK LIGHT
- LVP LAMINATED VERTICAL PANEL
- OP OBSERVATION PANEL
- PB PINBOARD
- RDO REMOTE DOOR OPENER
- SK5 FEATHER EDGE VINYL SKIRTING
- WB WHITE BOARD



**ELEVATION 3**



**ELEVATION 4**



**ELEVATION 5**

REV	DESCRIPTION	DATE	BY	REV	DESCRIPTION	DATE	BY	REV	DESCRIPTION	DATE	BY
1	FIRST ISSUE	29.07.05	HS								
<b>Australasian HFG</b>								<b>HCAMC</b> in association with <b>UNSW</b>		<b>HPI</b>	
DESIGNED				APPROVED		SCALE(S)		ZONE(S)			
JMH/BJ				DB		1:50 in A3					
CAD FILE NAME						PAPER DRAWING ID					
REC-E						REC-Eb					