

AUSTRALASIAN HFG STANDARD COMPONENTS

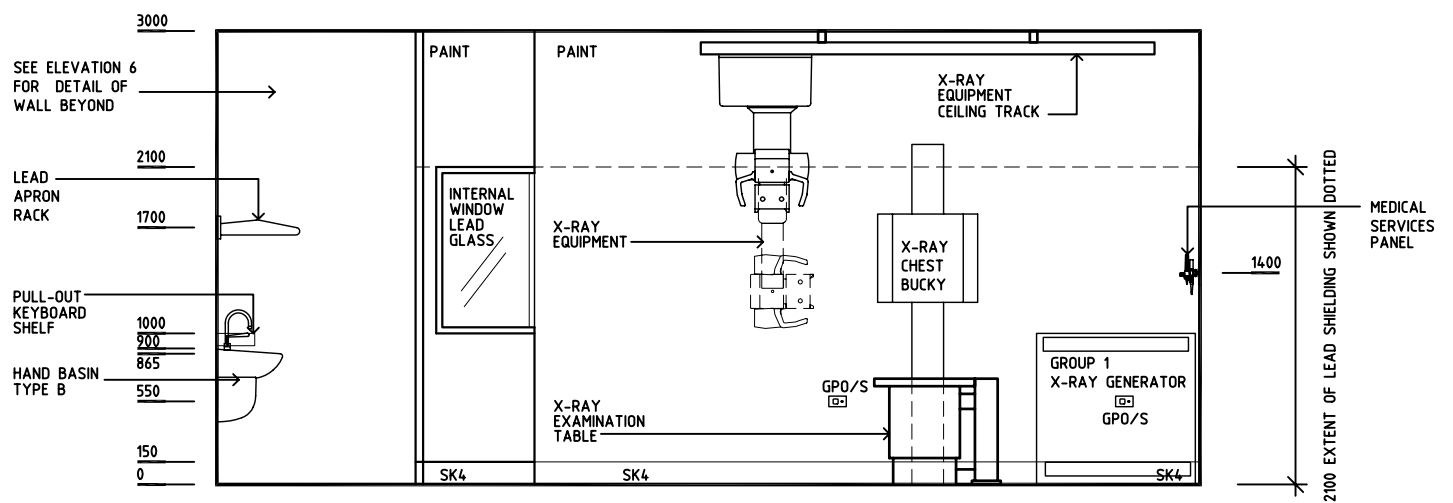
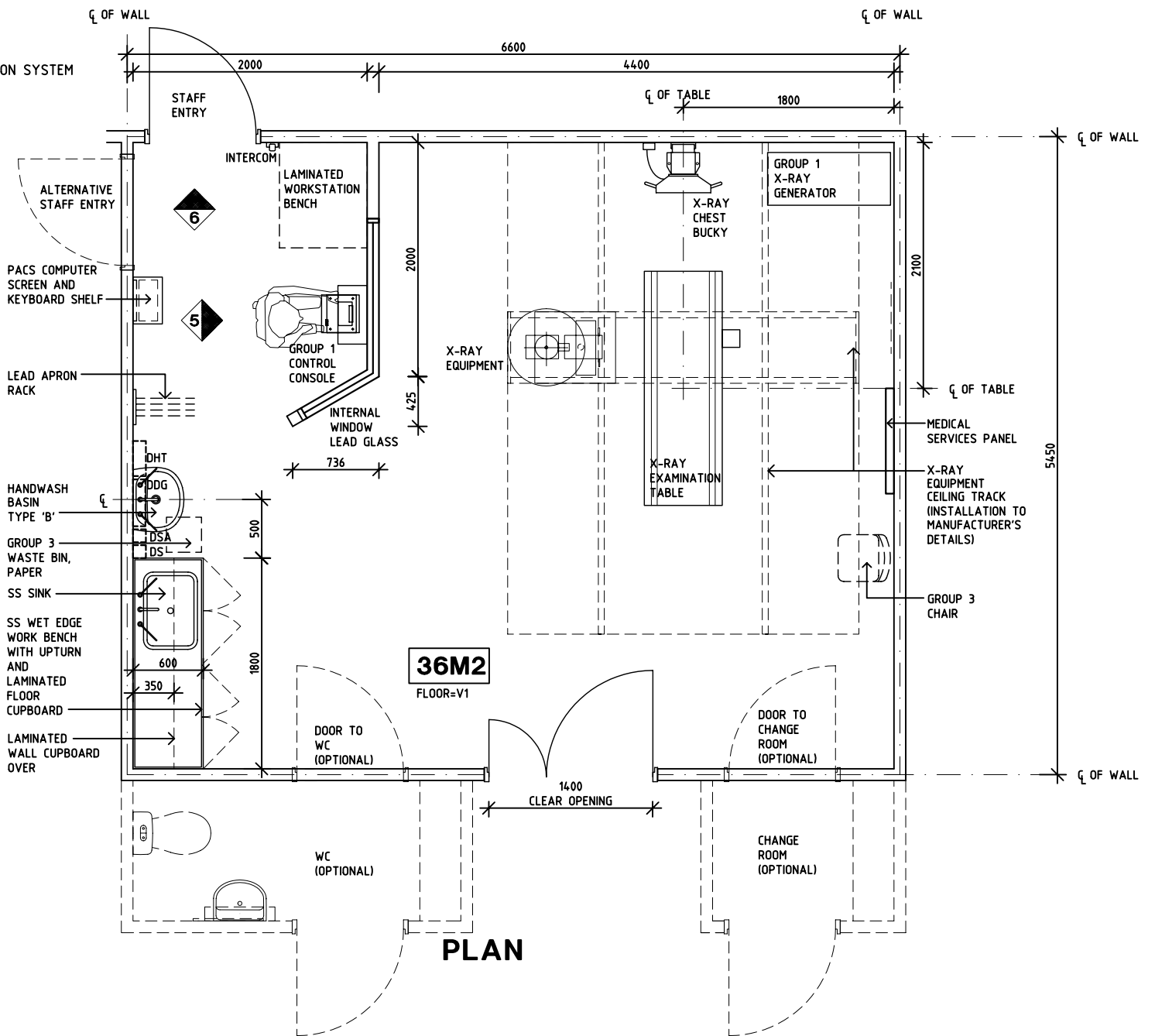
Room Layout Sheet

Room Name **Screening Room (Fluoroscopy)**

RLS Room Code **SCRN**

RDS Room Code **SCRN**

- AS ADJUSTABLE SHELVES
- COM/2 COMMUNICATION OUTLET - DOUBLE
- DDG DISPENSER - DISPOSABLE GLOVE
- DHT DISPENSER - HAND TOWEL
- DS DISPENSER - SOAP
- DSA DISPENSER - SOAP ANTISEPTIC
- DP DOOR AND DOOR FRAME PROTECTION
- EC EMERGENCY CALL
- GPO/1 GENERAL PURPOSE OUTLET - SINGLE
- GPO/1 EP EMERGENCY POWER OUTLET - SINGLE
- GPO/2 GENERAL PURPOSE OUTLET - DOUBLE
- GPO/S SPECIAL POWER OUTLET - SINGLE
- LS/R LIGHT SWITCH - ROOM
- LS/CH LIGHT SWITCH - CHANGE ROOM
- LS/WC LIGHT SWITCH - WC
- MA MEDICAL AIR
- NA NURSE ASSIST CALL
- O2 OXYGEN
- PACS PICTURE ARCHIVE AND COMMUNICATION SYSTEM
- S SUCTION
- SK4 FLOOR VINYL COVERED SKIRTING
- SS STAINLESS STEEL
- V1 VINYL FLOORING, STANDARD



ELEVATION 1

REV	DESCRIPTION	DATE	BY	REV	DESCRIPTION	DATE	BY	REV	DESCRIPTION	DATE	BY
1	FIRST ISSUE	1.7.05	HS								



HCAMC in association with
UNSW

HPI

DESIGNED	APPROVED	SCALE(S)	ZONE(S)
JMH/HS	DB	1:50 in A3	
CAD FILE NAME SCRN		PAPER DRAWING ID SCRNa	

NSW HFG STANDARD COMPONENTS

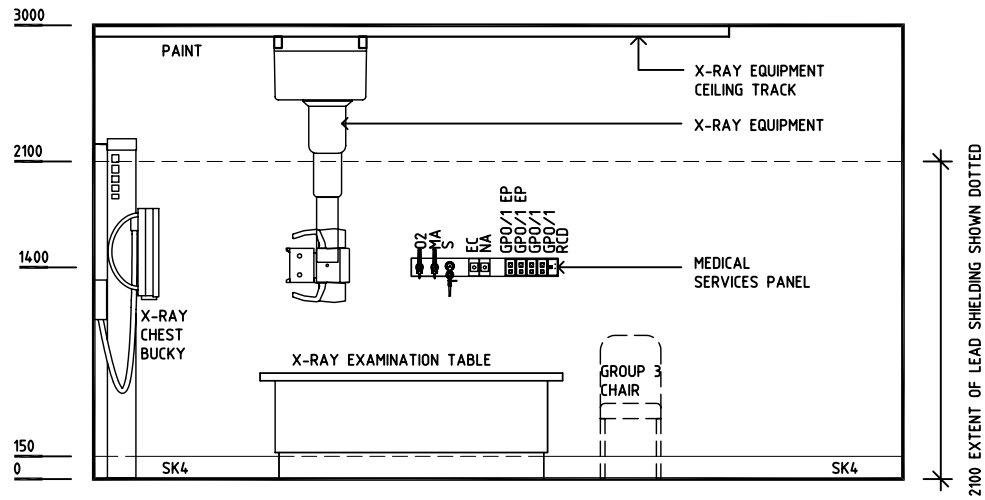
Room Layout Sheet

Room Name **Screening Room (Fluoroscopy)**

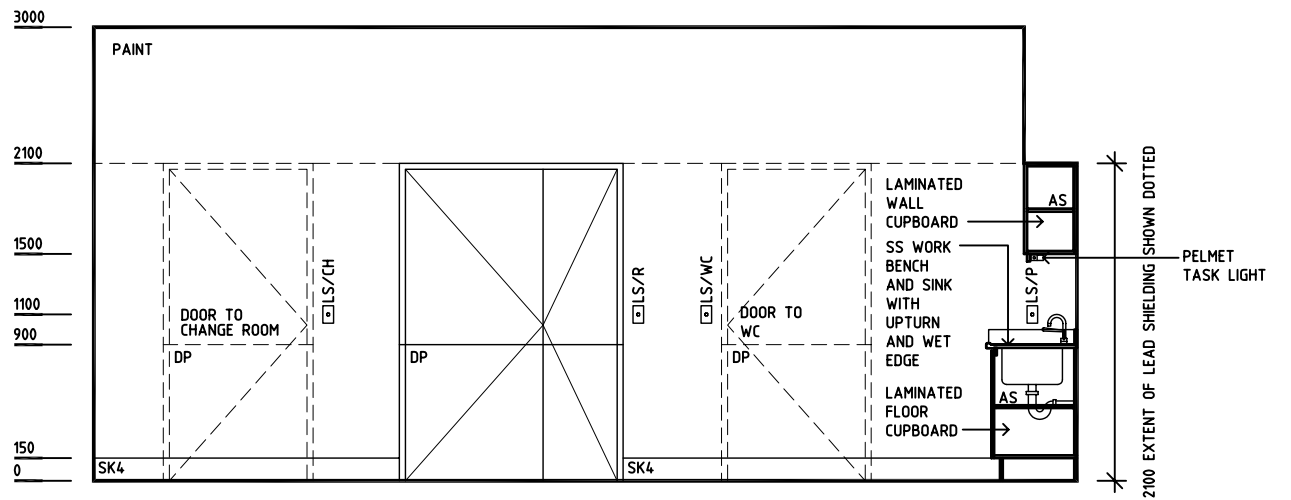
RLS Room Code **SCRN**

RDS Room Code **SCRN**

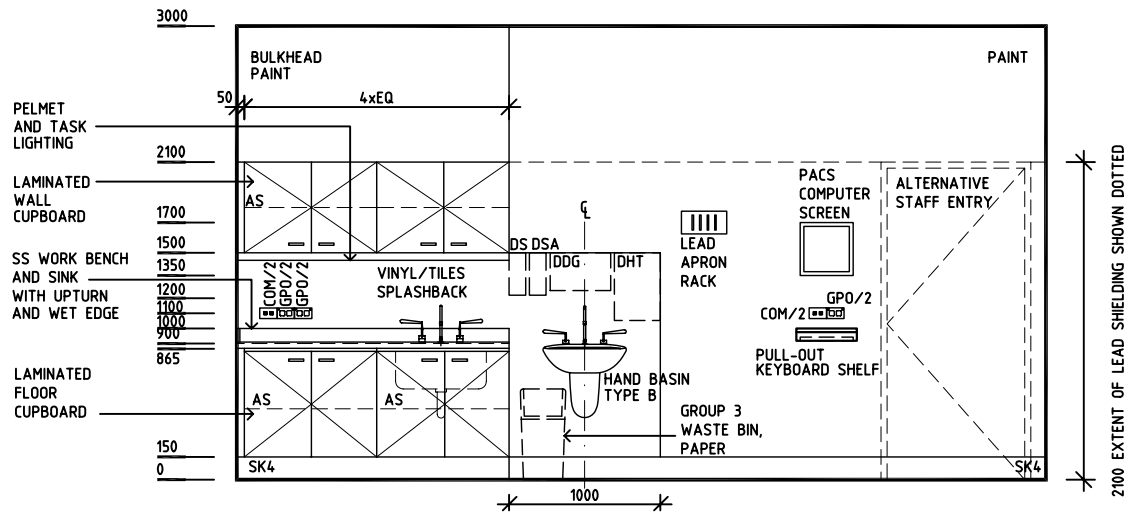
- AS ADJUSTABLE SHELVES
- COM/2 COMMUNICATION OUTLET - DOUBLE
- DDG DISPENSER - DISPOSABLE GLOVE
- DHT DISPENSER - HAND TOWEL
- DS DISPENSER - SOAP
- DSA DISPENSER - SOAP ANTISEPTIC
- DP DOOR AND DOOR FRAME PROTECTION
- EC EMERGENCY CALL
- GPO/1 GENERAL PURPOSE OUTLET - SINGLE
- GPO/1 EP EMERGENCY POWER OUTLET - SINGLE
- GPO/2 GENERAL PURPOSE OUTLET - DOUBLE
- GPO/S SPECIAL POWER OUTLET - SINGLE
- LS/P LIGHT SWITCH - PELMET TASK LIGHT
- LS/R LIGHT SWITCH - ROOM
- LS/CH LIGHT SWITCH - CHANGE ROOM
- LS/WC LIGHT SWITCH - WC
- MA MEDICAL AIR
- NA NURSE ASSIST CALL
- O2 OXYGEN
- PACS PICTURE ARCHIVE AND COMMUNICATION SYSTEM
- RCD RESIDUAL CURRENT DEVICE
- S SUCTION
- SK4 FLOOR VINYL COVERED SKIRTING
- SS STAINLESS STEEL
- V1 VINYL FLOORING, STANDARD



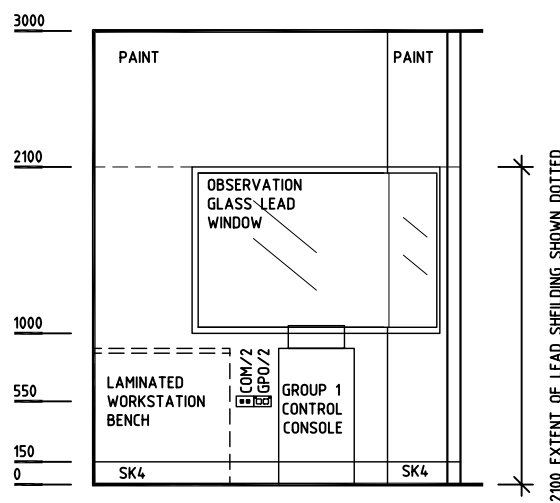
ELEVATION 2



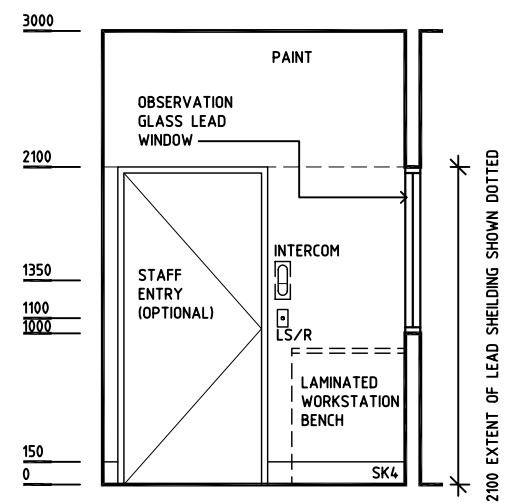
ELEVATION 3



ELEVATION 4



ELEVATION 5



ELEVATION 6

REV	DESCRIPTION	DATE	BY	REV	DESCRIPTION	DATE	BY	REV	DESCRIPTION	DATE	BY
1	FIRST ISSUE	1.7.05	HS								