

# AUSTRALASIAN HFG STANDARD COMPONENTS

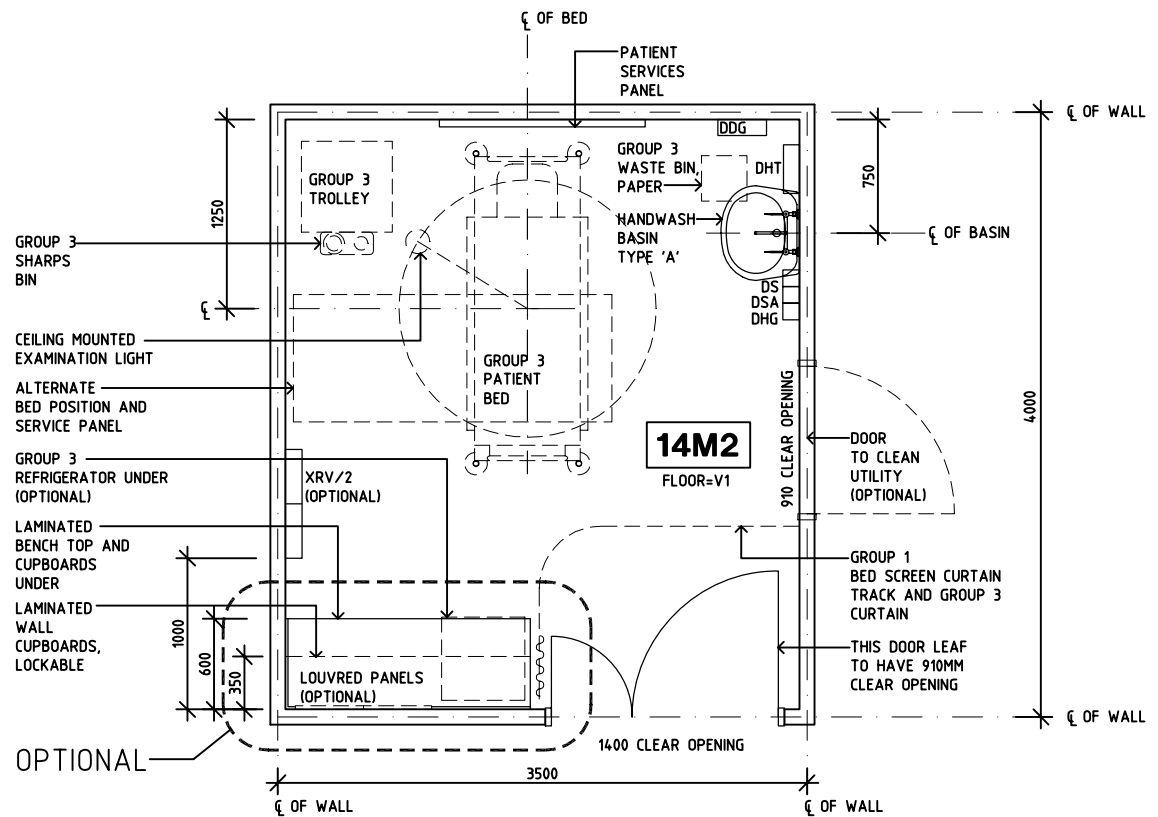
Room Layout Sheet

Room Name **Treatment Room**

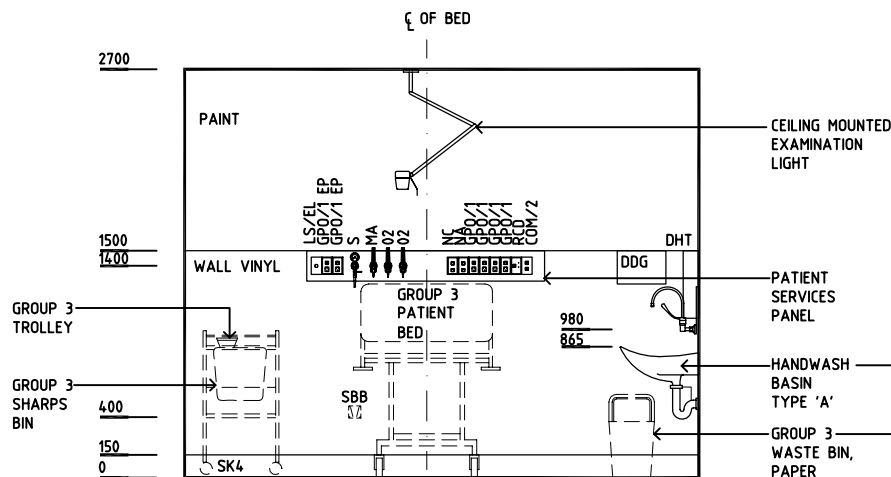
RLS Room Code **TRMT**

RDS Room Code **TRMT**

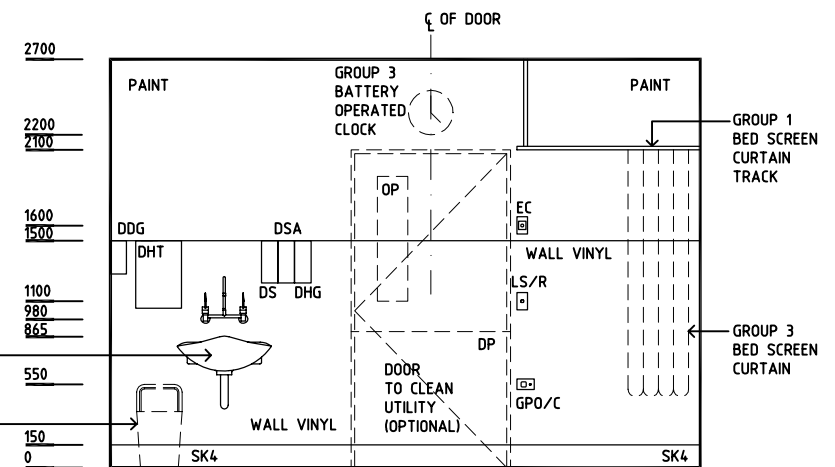
- AS ADJUSTABLE SHELF
- COM/2 COMMUNICATIONS OUTLET, DOUBLE
- DDG DISPENSER - DISPOSABLE GLOVE
- DHG DISPENSER - HAND GEL
- DHT DISPENSER - HAND TOWEL
- DS DISPENSER - SOAP
- DSA DISPENSER - SOAP ANTISEPTIC
- DP DOOR AND DOOR FRAME PROTECTION
- EC EMERGENCY CALL
- GPO/1 GENERAL PURPOSE OUTLET - SINGLE
- GPO/2 GENERAL PURPOSE OUTLET - DOUBLE
- GPO/1 EP GENERAL PURPOSE OUTLET - EMERGENCY POWER
- GPO/C GENERAL PURPOSE OUTLET - CLEANER'S
- LS/EL LIGHT SWITCH-EXAMINATION LIGHT
- LS/R LIGHT SWITCH-ROOM
- LS/P LIGHT SWITCH-PELMET TASK LIGHT
- MA MEDICAL AIR
- NA NURSE ASSIST CALL
- NC PATIENT/ NURSE CALL
- O2 OXYGEN
- OP OBSERVATION PANEL
- RCD RESIDUAL CURRENT DEVICE
- S SUCTION
- SBB SUCTION BOTTLE BRACKET
- SK4 FLOOR VINYL COVERED SKIRTING
- V1 VINYL FLOORING, STANDARD
- XRV/2 X-RAY VIEWER, 2 SCREEN



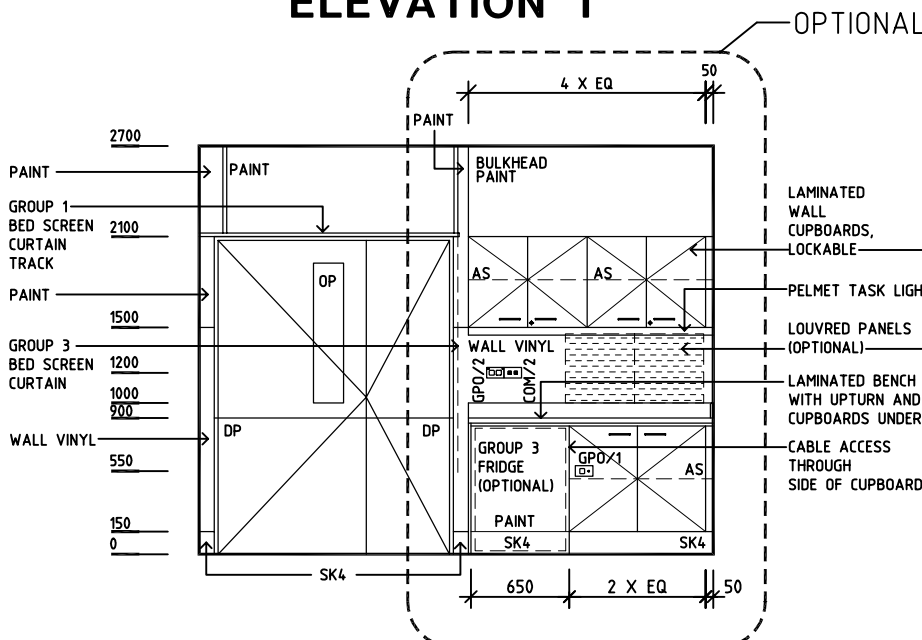
**PLAN**



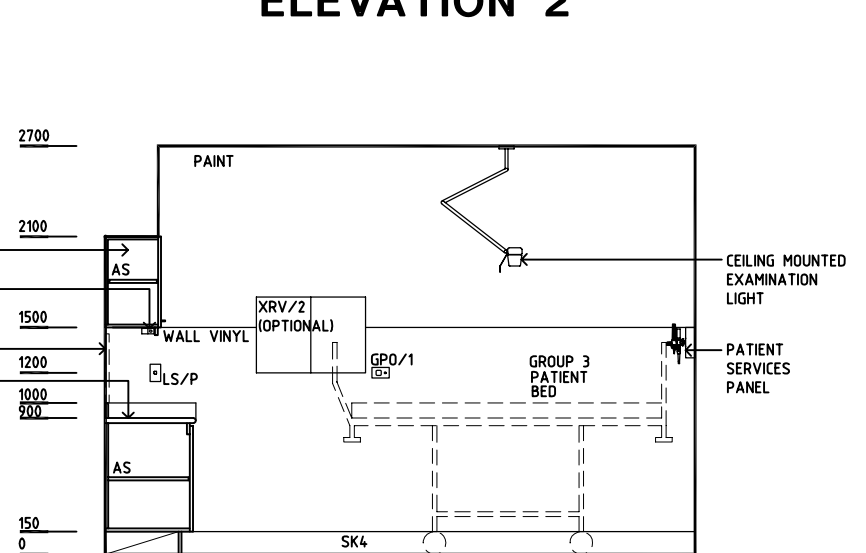
**ELEVATION 1**



**ELEVATION 2**



**ELEVATION 3**



**ELEVATION 4**

REV	DESCRIPTION	DATE	BY	REV	DESCRIPTION	DATE	BY	REV	DESCRIPTION	DATE	BY
1	FIRST ISSUE	8.12.03	AA	4	GENERAL REVISIONS	14.8.08	CX				
2	GENERAL REVISIONS	6.6.05	AL	5	2009 AUS HFG REVIEW, GENERAL REVISIONS	20.03.09	CT				
3	GENERAL REVISIONS	20.6.05	AL								



DESIGNED	APPROVED	SCALE(S)	ZONE(S)
AA/AL	DB	150 in A3	
CAD FILE NAME TRMT		PAPER DRAWING ID TRMT	