

AUSTRALASIAN HFG STANDARD COMPONENTS

Room Layout Sheet

Room Name **1 Bed Room - Inboard Ensuite (Type 2)**

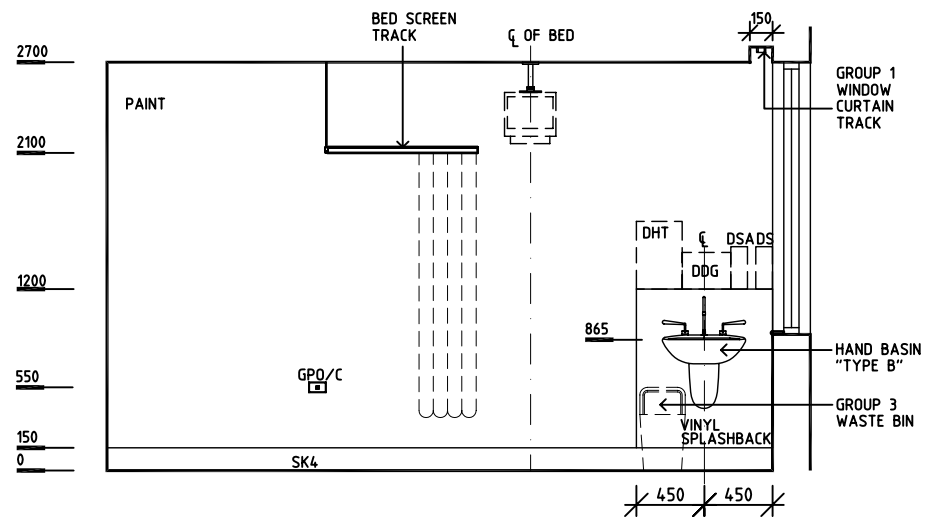
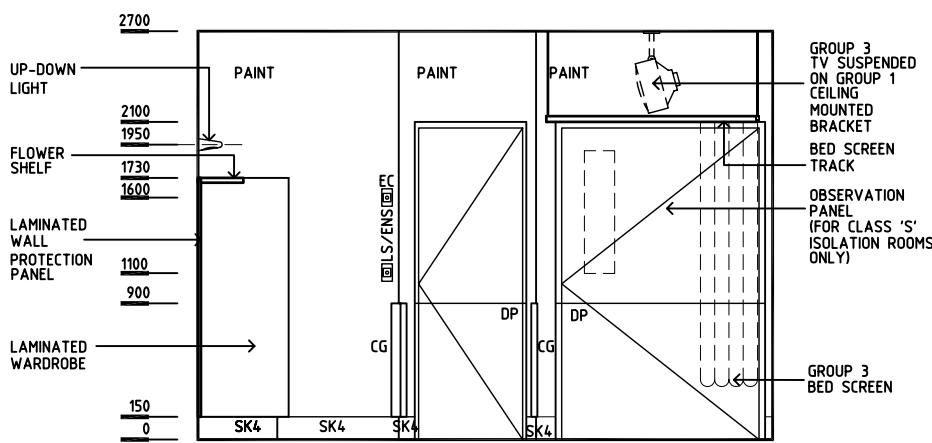
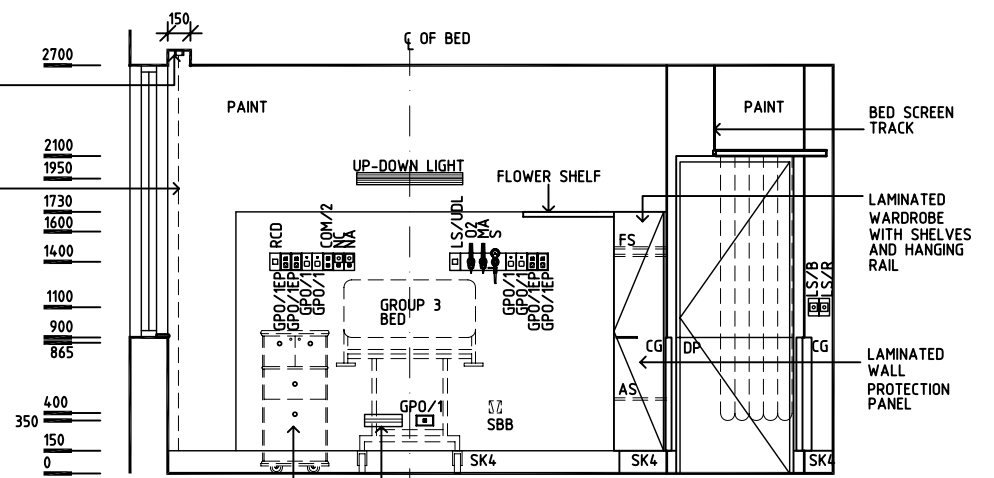
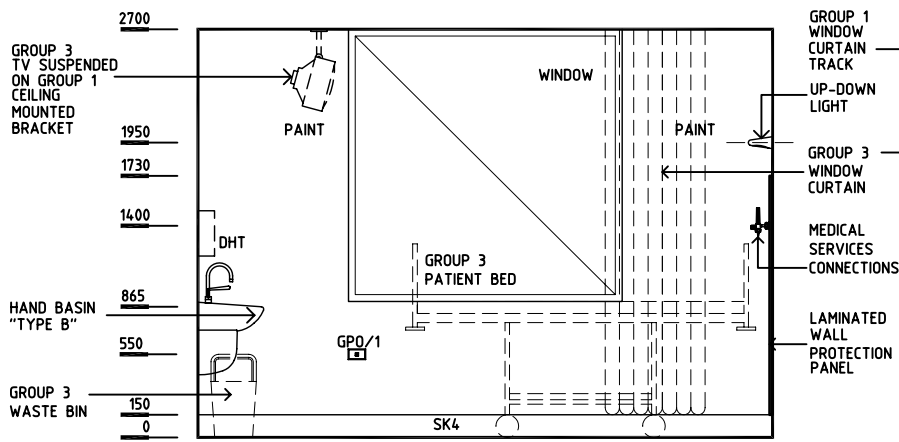
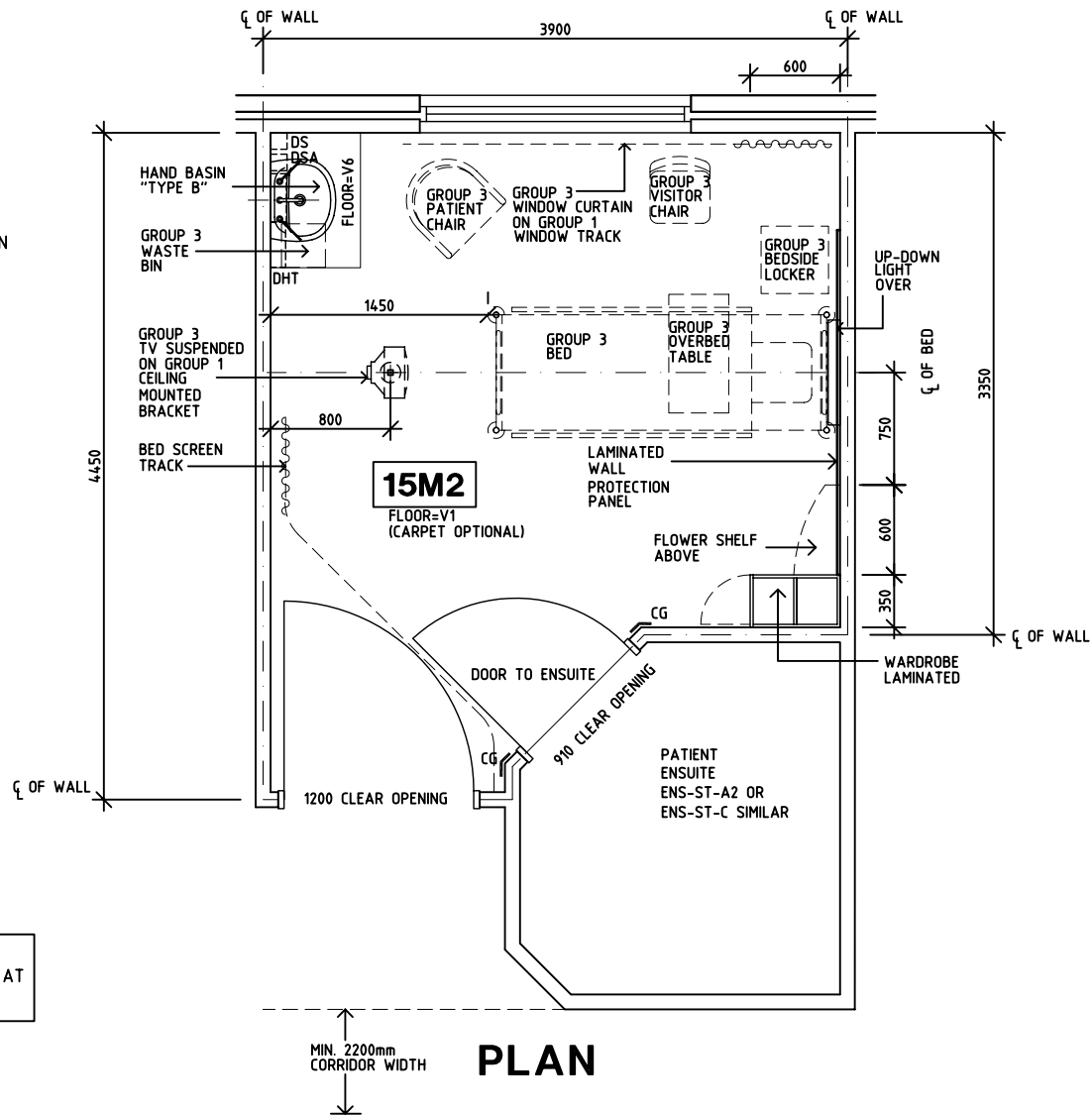
RLS Room Code **1 BR-ST-A2**

RDS Room Code **1 BR-ST**

- AS ADJUSTABLE SHELF
- CG CORNER GUARD
- COM/2 COMMUNICATION OUTLET - DOUBLE
- DDG DISPENSER - DISPOSABLE GLOVES
- DHT DISPENSER - HAND TOWEL
- DS DISPENSER - SOAP
- DSA DISPENSER - SOAP ANTISEPTIC
- DP DOOR AND DOOR FRAME PROTECTION
- EC EMERGENCY CALL
- FS FIXED SHELF
- GPO/1 GENERAL PURPOSE OUTLET-SINGLE
- GPO/1EP EMERGENCY POWER - SINGLE
- GPO/C EMERGENCY POWER - CLEANER'S
- LS/B LIGHT SWITCH - BED
- LS/ENS LIGHT SWITCH - ENSUITE
- LS/R LIGHT SWITCH - ROOM
- LS/UDL LIGHT SWITCH - UP-DOWN LIGHT
- MA MEDICAL AIR
- NA NURSE ASSIST CALL
- NC PATIENT NURSE CALL
- O2 OXYGEN
- RCD RESIDUAL CURRENT DEVICE
- S SUCTION
- SBB SUCTION BOTTLE BRACKET
- SK4 FLOOR VINYL COVED SKIRTING
- V1 VINYL FLOORING, STANDARD
- V6 VINYL FLOORING, TEXTURED



ROOM SUITABLE FOR ORTHOPAEDIC PATIENTS AND PATIENTS REQUIRING ADDITIONAL EQUIPMENT AT THE FOOT OF THE BED



REV	DESCRIPTION	DATE	BY	REV	DESCRIPTION	DATE	BY	REV	DESCRIPTION	DATE	BY
1	FIRST ISSUE	2.8.05	AL								
2	NOTES ADDED	15.8.05	AL								

Australasian HFG

HCAMC in association with **UNSW**

HPI

DESIGNED	APPROVED	SCALE(S)	ZONE(S)
AL	DB	1:50 in A3	
CAD FILE NAME 1 BR-ST-A2		PAPER DRAWING ID 1 BR-ST-A2	