

# Australasian Health Facility Guidelines

---

## Part C - Design for Access, Mobility, OHS and Security Appendices

Uncontrolled when printed

## COPYRIGHT AND DISCLAIMER

### Copyright

---

© 2015 Australasian Health Infrastructure Alliance

The Australasian Health Facility Guidelines (AusHFG) and the information in them are the copyright of the Australasian Health Infrastructure Alliance (AHIA). The information in the AusHFG is made freely available.

#### **Australasian Health Facility Guidelines**

Address: PO Box 1060, North Sydney NSW 2059  
Website: <http://www.healthfacilityguidelines.com.au>  
Email: [webmaster@healthfacilityguidelines.com.au](mailto:webmaster@healthfacilityguidelines.com.au)

The AusHFGs are an initiative of the Australasian Health Infrastructure Alliance (AHIA). AHIA membership is comprised of representatives from government health infrastructure planning and delivery entities in all jurisdictions in Australia and New Zealand.

### Disclaimer

---

AHIA gives no warranty or guarantee that the information in the AusHFG is correct, complete or otherwise suitable for use. AHIA shall not be liable for any loss howsoever caused whether due to negligence or otherwise arising from the use of or reliance on this information.

AHIA recommends that those seeking to rely on the information in the AusHFG obtain their own independent expert advice.

## Index

AX APPENDICES	4
AX.01 Glossary and Abbreviations	4
AX.02 Area Measurement Methodology	5

## AX APPENDICES

### AX.01 Glossary and Abbreviations

---

This Document adopts the terms and meanings used in the BCA and Australian Standards, in addition to the following abbreviations. Common abbreviations for NZ, States and Territories and Government Agencies are used without additional explanation.

Refer also to Part A Section 50 - Glossary of Terms.

#### ABBREVIATIONS

AHRC Australian Human Rights Commission (formerly HREOC)  
AS Australian Standard  
AS/NZS Australian and New Zealand Standard  
AusHFG Australasian Health Facility Guidelines (this document is a part of these)  
BCA Building Code of Australia  
CCTV Closed Circuit Television  
CI Critical infrastructure  
CPTED Crime Prevention Through Environmental Design  
DDA The Disability Discrimination Act  
ERM Emergency Risk Management  
ESD Ecologically Sustainable Development  
FF&E Furniture, Fittings and Equipment (see Glossary) includes Fixtures and Fittings  
HFG Health Facility Guideline  
HPU Health Planning Unit  
HREOC Human Rights and Equal Opportunity Commission, see AHRC  
HVAC Heating, ventilation, and Air-conditioning  
IEQ Indoor Environment Quality  
ISO International Standards Organization  
OHS, OHSW Occupational Health and Safety (and Welfare)  
PCG Project Control Group  
SA. HB Standards Australia. Hand Book  
AS/NZS Standards Australia/Standards New Zealand  
SDC Sustainable Development Commission, UK  
VOC Volatile Organic Compound

#### ORGANISATIONS

ABCB Australian Building Code Board  
AIQS Australian Institute of Quantity Surveyors  
ASCC Australian Safety and Compensation Council (formerly NOHSC)  
CAE The Centre for Accessible Environments (UK)  
CASA Civil Aviation Safety Authority Australia  
GBCAUS Green Building Council of Australia  
NHS Estates National Health Service Estates (UK)  
NOHSC See ASCC  
AS/NZS Standards Australia/Standards New Zealand

#### GLOSSARY

##### **Accessible**

Accessible by people with disabilities.

##### **Critical infrastructure**

A service, facility or a group of services or facilities, the loss of which will have severe adverse effects on the physical, social, economic or environmental well being or safety of the community.

##### **Designated Hazardous Substance**

A substance listed in the Hazardous Substances Information System (HSIS) provided by the Australian Safety and Compensation Council (formerly NOHSC) as a designated hazardous substance.

**Equipment\***

Refer 'Fixtures', term used for kitchen, laundry, sterilising equipment etc.

**Emergency Risk Management**

A systematic process that produces a range of risk treatments that reduce the likelihood or consequences of events.

**Fixtures\***

Fixed items that require service connection e.g. electrical, hydraulic, mechanical and includes basins, light fittings, clocks, medical service panels etc.

**Fittings\***

Fixed items attached to walls, floors or ceilings that do not require services such as curtain and IV tracks, hooks, mirrors, blinds, joinery, pin boards etc.

**Furniture\***

Loose furniture e.g. desks, joinery, beds, etc.

**Hazardous Substance**

Identified on an MSDS as having an exposure standard or being a hazard to health in the 'health hazard information' section of the MSDS. See also Designated Hazardous Substance.

**Vinyl**

PVC (polyvinylchloride).

**Visitor**

Any person visiting the facility including contractors, public, medical and services staff, etc.

**Sustainable/sustainability**

General term for ESD

**Wayfinding**

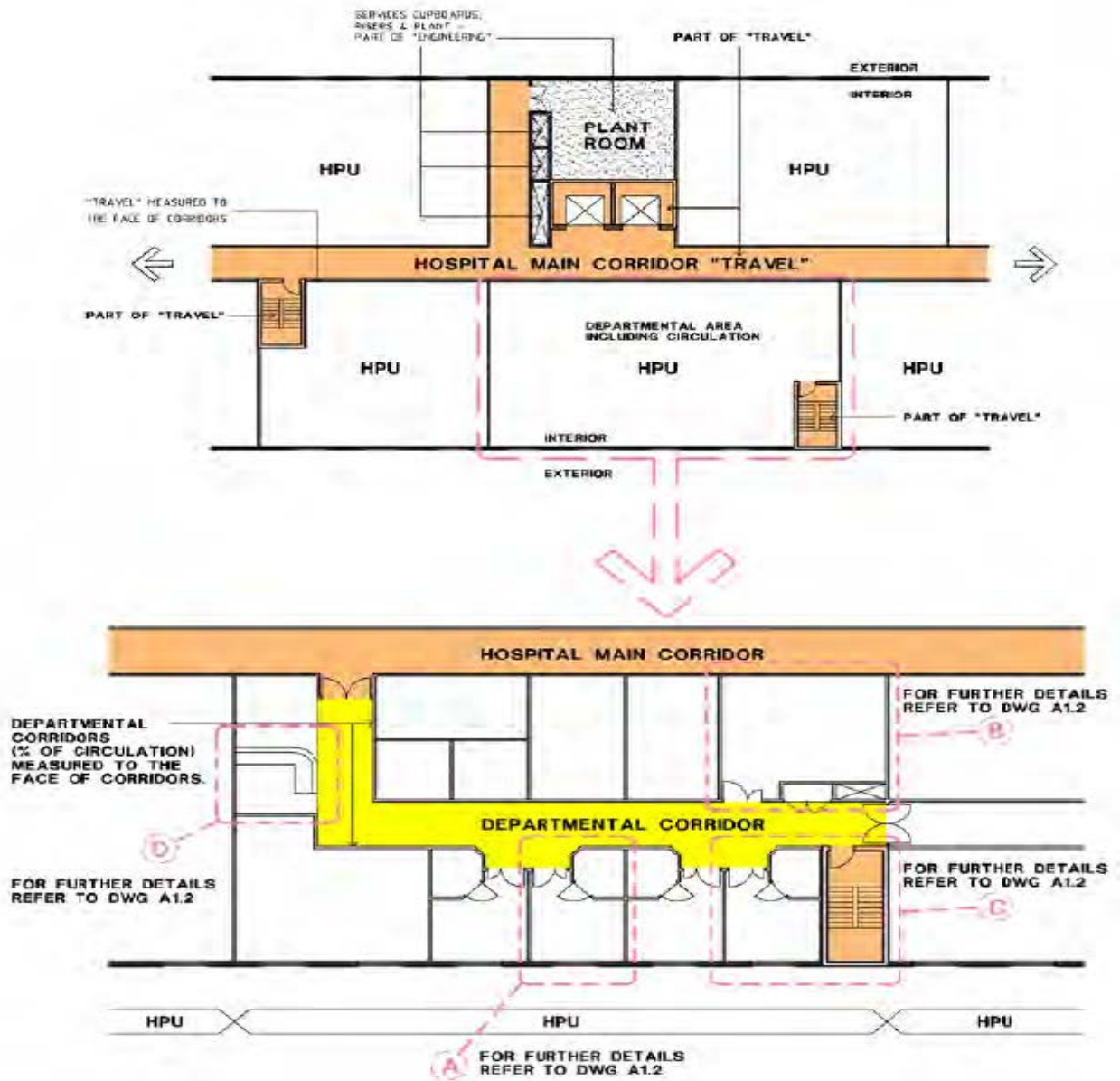
Strategy to assist people in finding their way.

\* For further information on FF&E and Fixtures and Fittings refer to the Standard Components Room Data Sheets (RDS) 'How to use'.

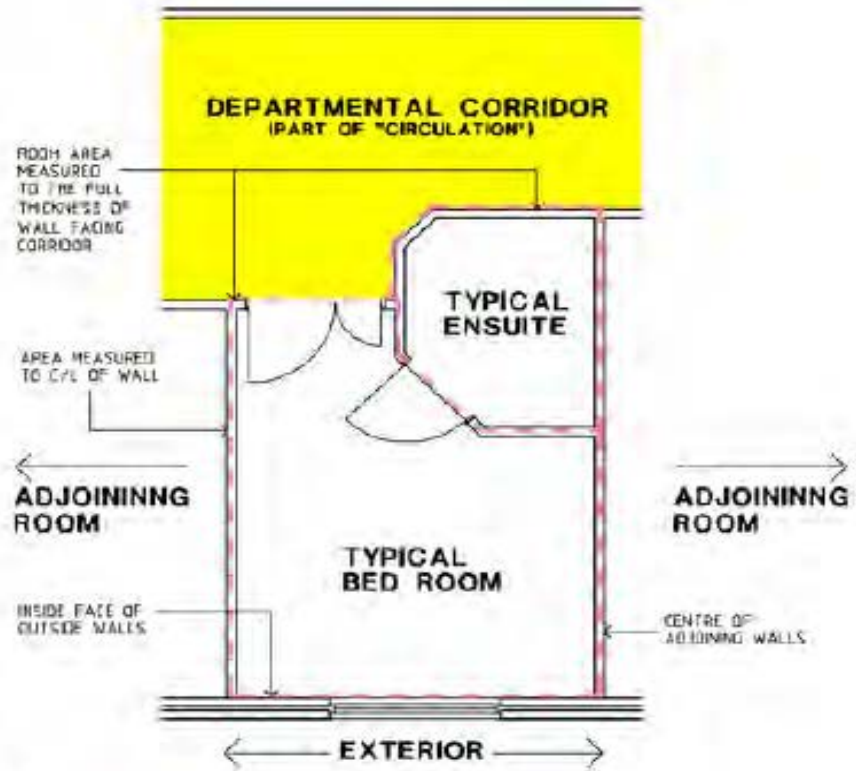
## AX.02 Area Measurement Methodology

---

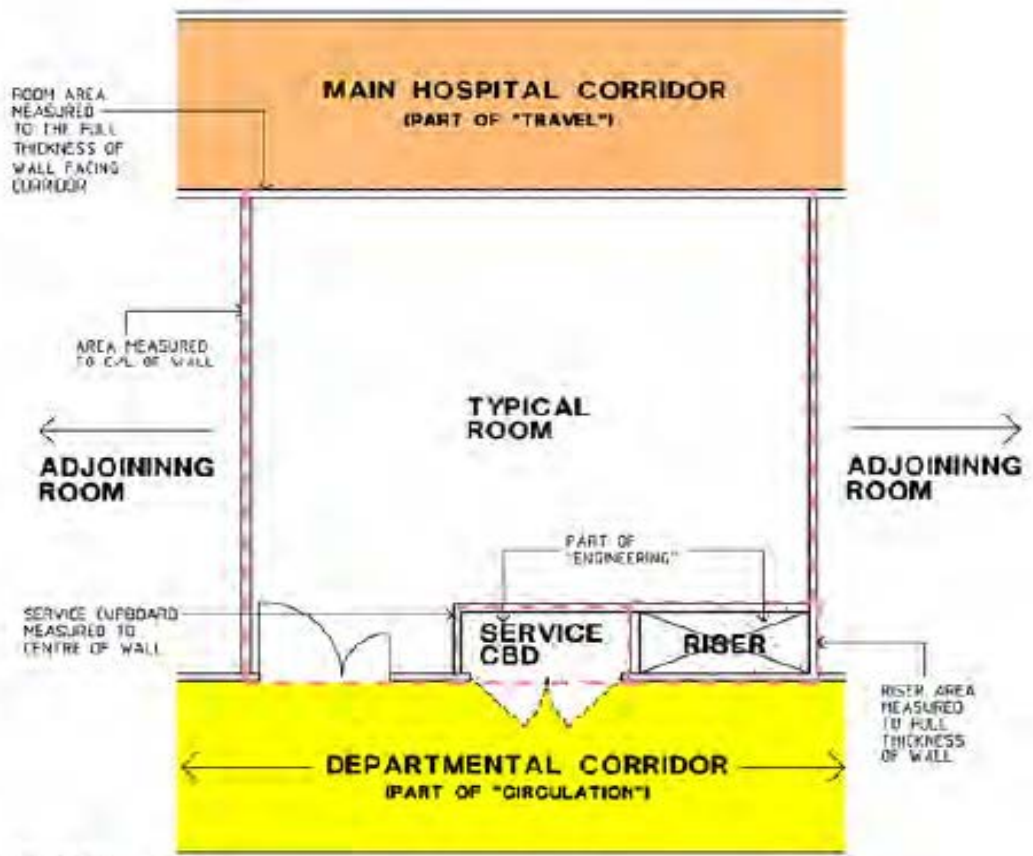
Diagrams referred to in 705 Planning Policies - Room Sizes.



DWG A1.1 (Drawing reproduced from DHS Victoria, 2004, Design Guidelines for Hospitals and Day Procedure Centres, Department of Human Services, Victoria).



**C. PART PLAN**



**D. PART PLAN**

DWG A1.2 part (Drawing reproduced from DHS Victoria, 2004, Design Guidelines for Hospitals and Day Procedure Centres, Department of Human Services, Victoria).

