

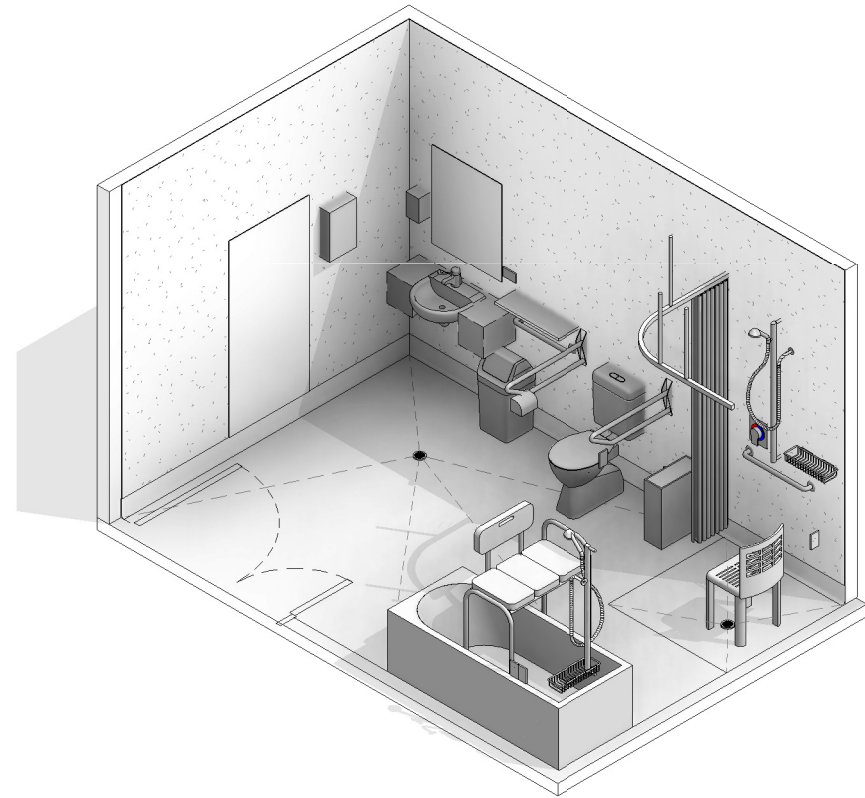
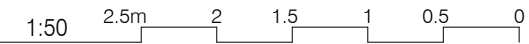
# AUSTRALASIAN HFG STANDARD COMPONENTS

Room Layout Sheet

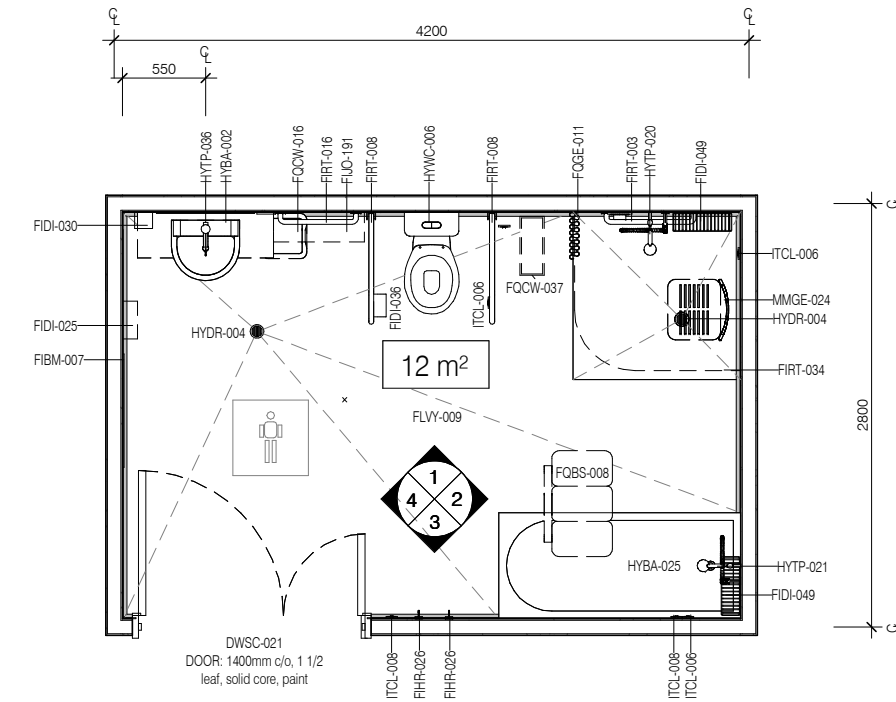
RLS Room Code: **ADLB**

Room Name:

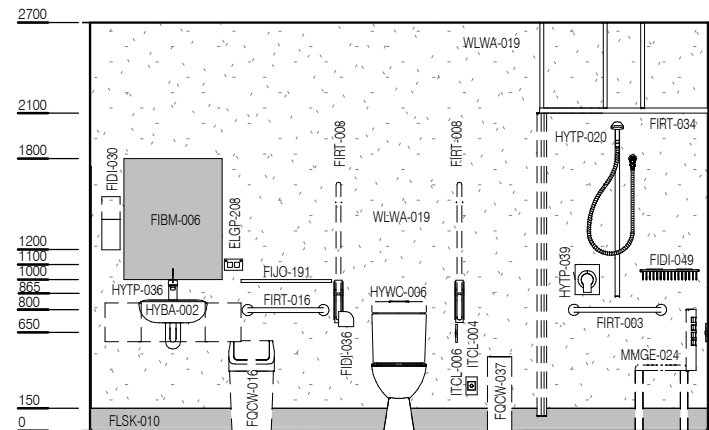
**ADL BATHROOM**



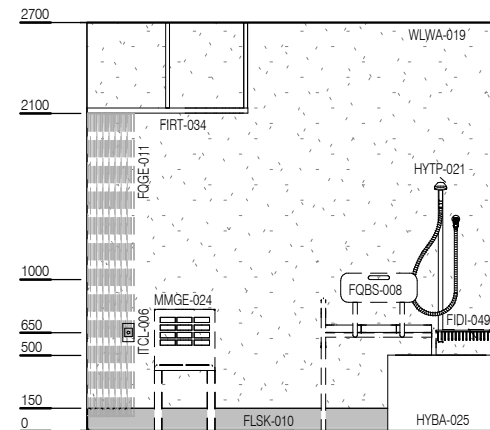
CODE	DESCRIPTION
DWPR-006	DOOR PROTECTION: protection plate, to 900 AFFL, PVC, prefinished
DWPR-010	DOOR PROTECTION: to door frame, PVC, prefinished
DWSC-021	DOOR: 1400mm c/o, 1 1/2 leaf, solid core, paint
ELBO-015	SWITCH: light, single
ELGP-208	GPO: double, wall mounted
ELPR-001	BODY PROTECTED ELECTRICAL AREA
FIBM-006	MIRROR: fixed, glass, 800H nom.
FIBM-007	MIRROR: fixed, glass, full length
FIDI-025	DISPENSER: paper/hand towel
FIDI-030	DISPENSER: soap
FIDI-036	DISPENSER: toilet paper
FIDI-049	HOLDER: soap/shampoo, non-recessed
FIHR-026	HOOK: coat
FUJO-191	SHELF: above basin
FIRT-003	GRAB RAIL: shower, horizontal
FIRT-008	GRAB RAIL: WC, hinged
FIRT-016	RAIL: towel
FIRT-034	TRACK: curtain, shower, 90 deg
FLSK-010	SKIRTING: vinyl, floor vinyl coved, 150H, prefinished
FLVY-009	FLOOR FINISH: vinyl, seamless, coved, wet area, non-slip
FQBS-008	BENCH SEAT: freestanding, patient transfer
FQCW-016	BIN: waste, general, 20L
FQCW-037	BIN: waste, sanitary
FQGE-011	CURTAIN: shower
HYBA-002	BASIN: ensuite, with vanity unit
HYBA-025	BATH: domestic
HYDR-004	DRAIN: floor waste
HYTP-020	SHOWER: hand-held
HYTP-021	SHOWER: hand-held, over bath
HYTP-036	TAPWARE: mixer, basin, lever action
HYTP-039	TAPWARE: mixer, shower, lever action
HYWC-006	TOILET SUITE: patient
ITCL-004	BUTTON: nurse call, emergency
ITCL-006	BUTTON: nurse call, patient to staff
ITCL-008	BUTTON: nurse call, staff assist
MMGE-024	CHAIR: shower
WLWA-019	WALL FINISH: vinyl, full height



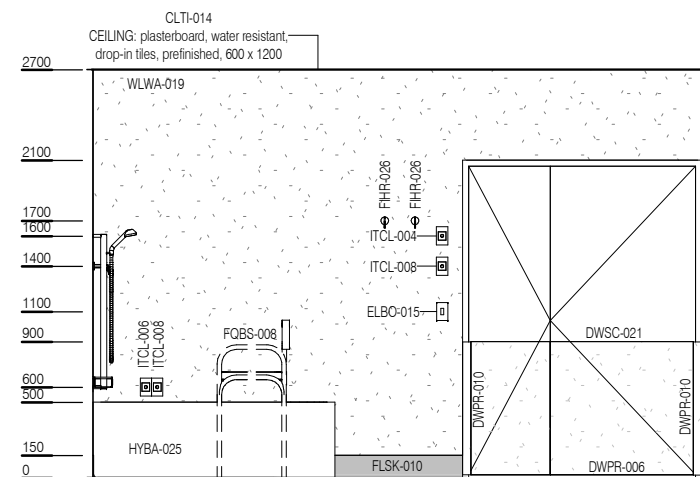
PLAN



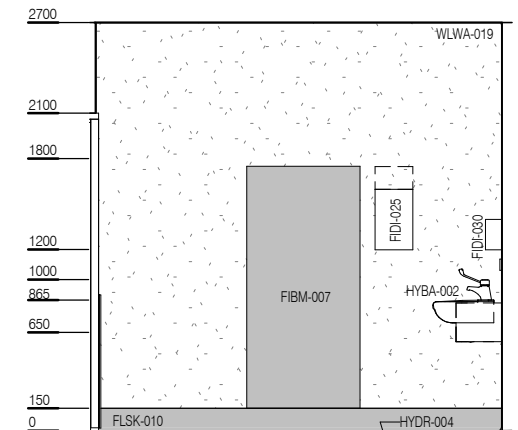
ELEVATION 1



ELEVATION 2



ELEVATION 3



ELEVATION 4



REV	DESCRIPTION	DATE
3	Coding and naming updated	20.03.2017

FOR GUIDANCE

SCALE	RLS Room Code	REV
1 : 50 @ A3	ADLB	3