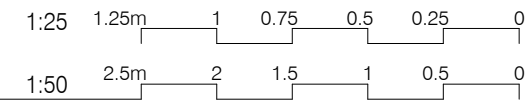


AUSTRALASIAN HFG STANDARD COMPONENTS

Room Layout Sheet

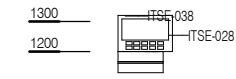
RLS Room Code: AIRLE-12



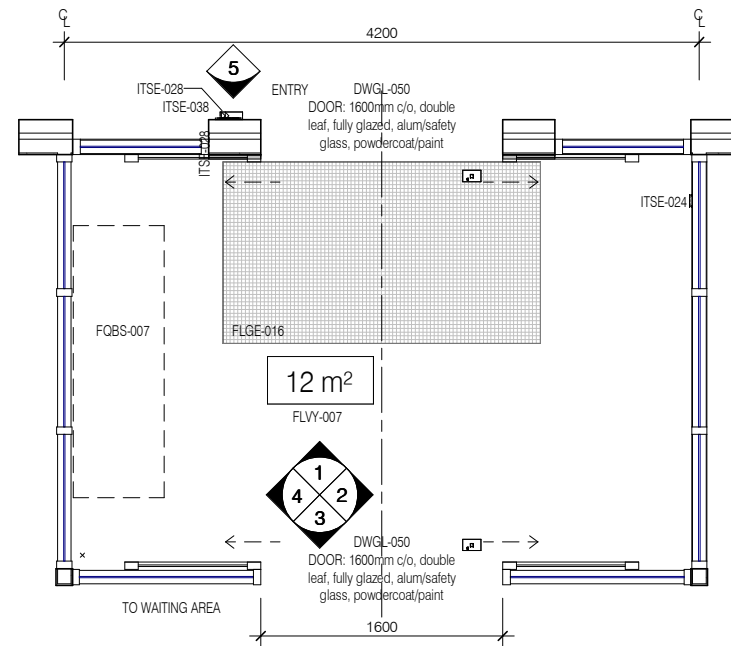
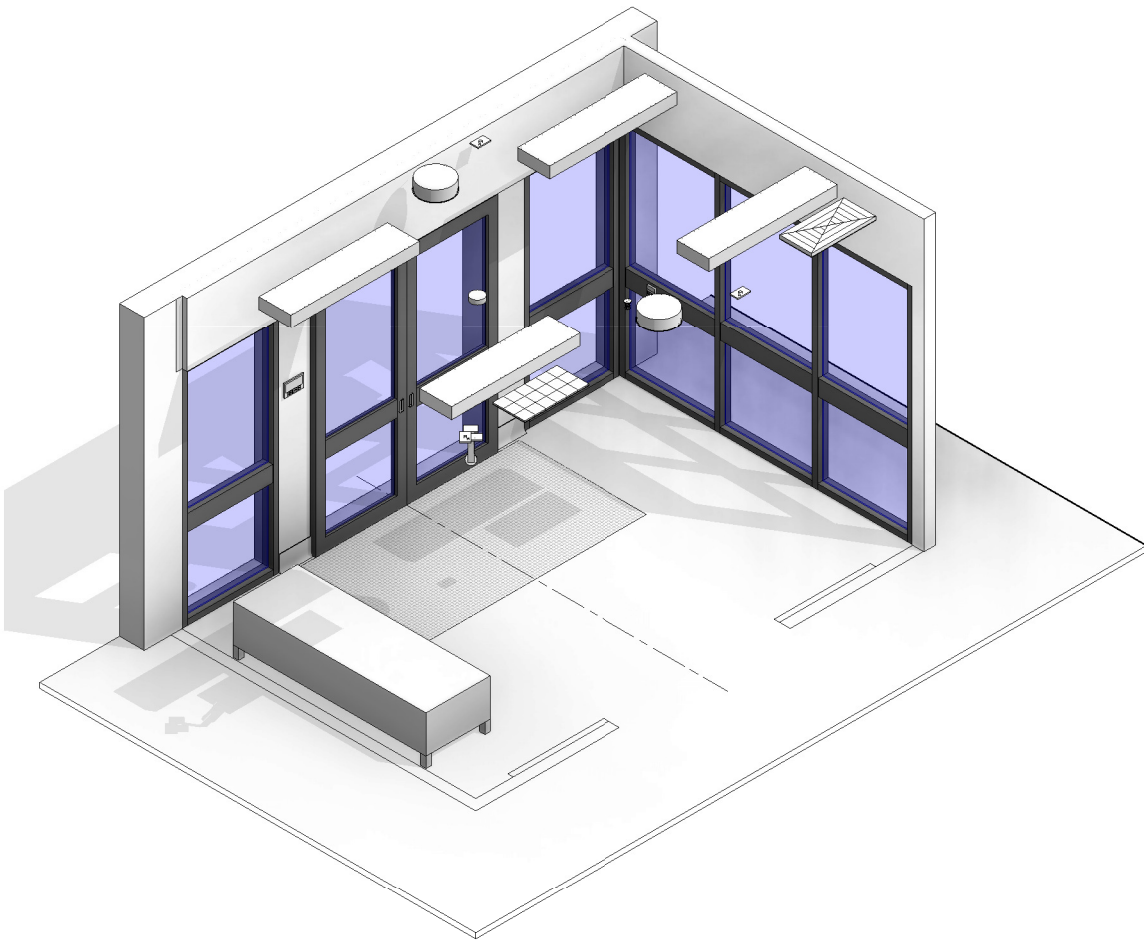
Room Name:

AIRLOCK - ENTRY, 12m²

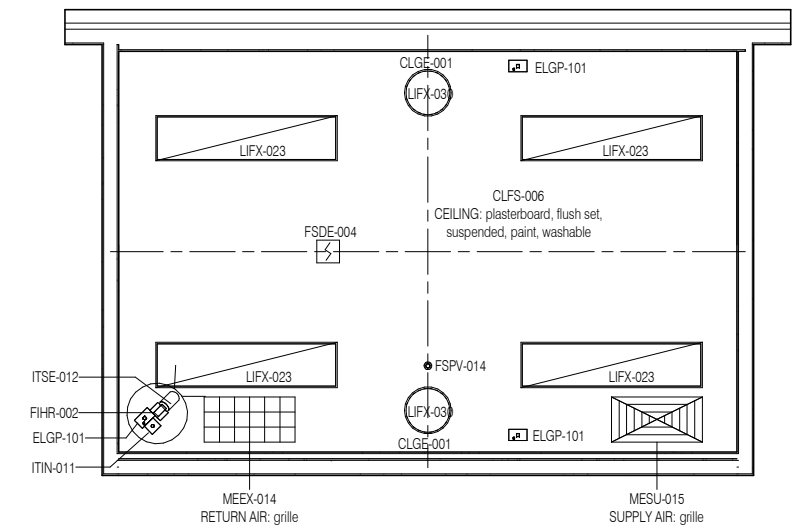
CODE	DESCRIPTION
CLGE-001	CEILING: plasterboard, bulkhead, paint
DWGE-014	GLAZING: safety glass
ELGP-101	GPO: single, ceiling mounted
FIHR-002	BRACKET: for CCTV camera, ceiling mounted
FLGE-016	FLOOR MAT: recessed, composite slip resistant
FLSK-008	SKIRTING: to suit glazing system over
FLVY-007	FLOOR FINISH: vinyl, seamless, coved, standard slip resistant
FQBS-007	BENCH SEAT: freestanding, indoor
FSDE-004	DETECTOR: smoke
FSPV-014	FIRE SUPPRESSION: sprinklers
ITIN-011	OUTLET: data, single RJ45, ceiling mounted
ITSE-012	CAMERA: CCTV
ITSE-024	DOOR RELEASE: access control, emergency override
ITSE-028	INTERCOM: audiovisual, wall mounted
ITSE-038	READER: access control, general
LIFX-023	LIGHT: fluorescent light, recessed and sealed
LIFX-030	LIGHT: downlight, recessed, compact fluorescent
MEEU-014	RETURN AIR: grille
MESU-015	SUPPLY AIR: grille
WLWA-004	WALL FINISH: paint, acrylic, washable



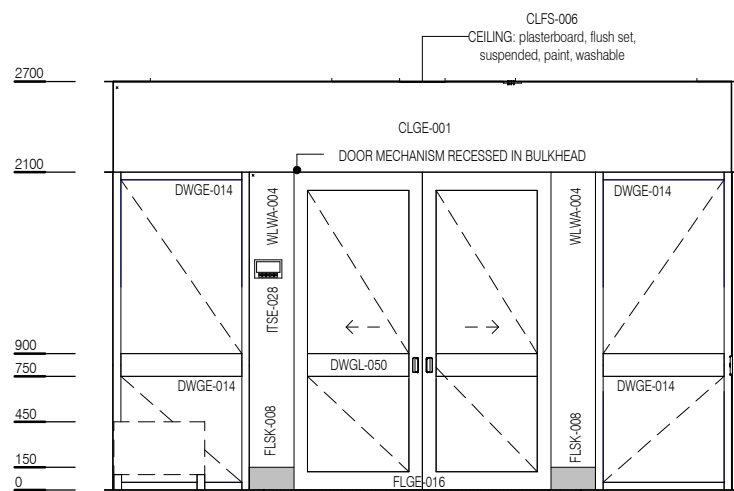
ELEVATION 5 (1 : 25 @ A3)



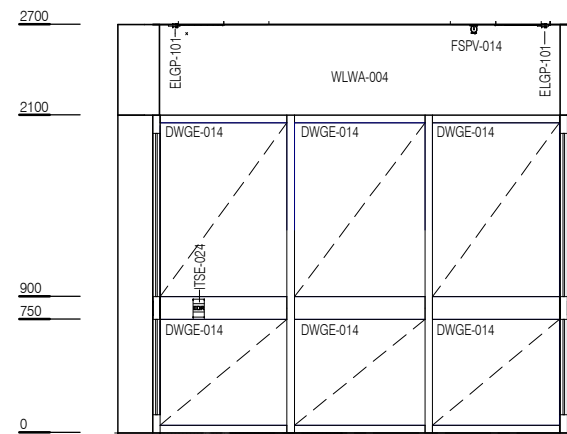
PLAN



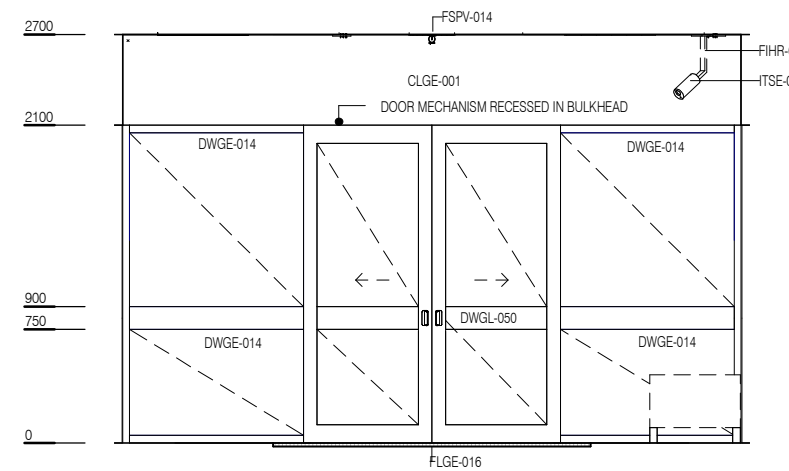
REFLECTED CEILING PLAN



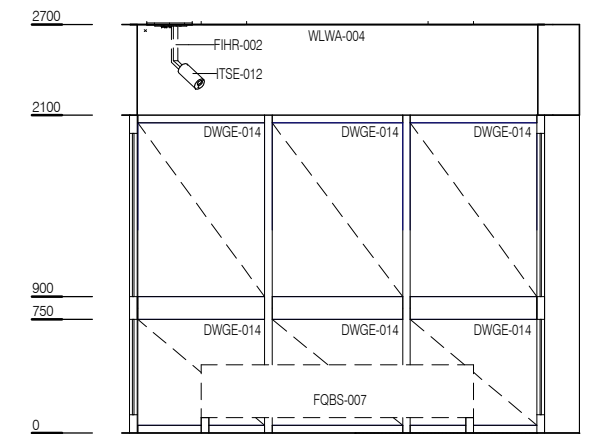
ELEVATION 1



ELEVATION 2



ELEVATION 3



ELEVATION 4



REV	DESCRIPTION	DATE
2	Coding and naming updated	20.03.2017

FOR GUIDANCE

SCALE	RLS Room Code	REV
1 : 50 @ A3	AIRLE-12	2