

AUSTRALASIAN HFG STANDARD COMPONENTS

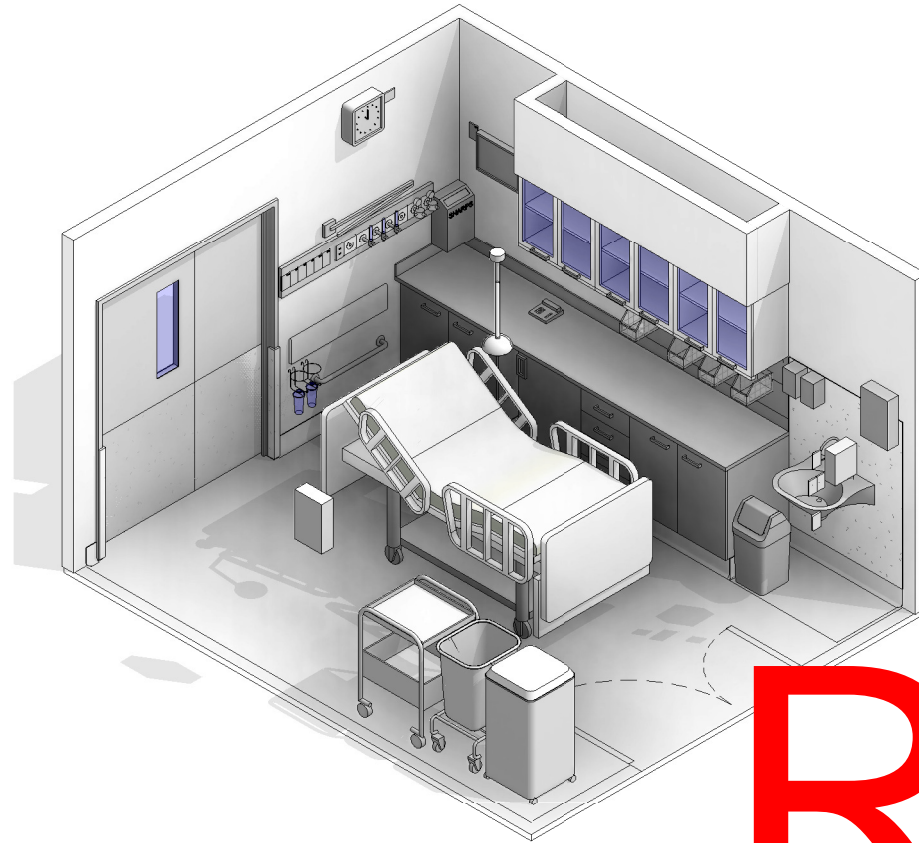
Room Layout Sheet

RLS Room Code: **ANIN**

Room Name:

1:50 2.5m 2 1.5 1 0.5 0

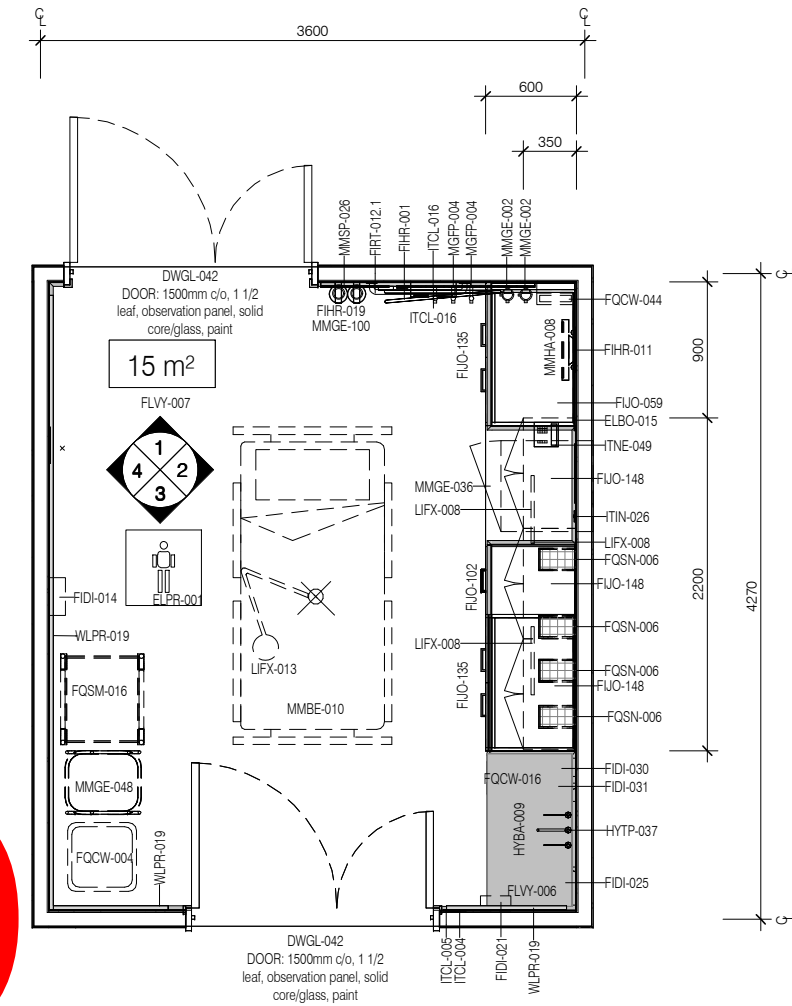
ANAESTHETIC INDUCTION ROOM



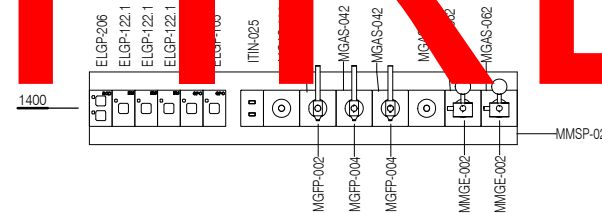
CODE	DESCRIPTION
CLGE-001	CEILING: plasterboard, bulkhead, paint
DWPR-006	DOOR PROTECTION: protection plate, to 900 AFFL, PVC, prefinished
DWPR-010	DOOR PROTECTION: to door frame, PVC, prefinished
ELBO-015	SWITCH: light, single
ELGP-105	GPO: single, on services panel
ELGP-106	GPO: single, special, for equipment
ELGP-109	GPO: single, wall mounted
ELGP-122.1	GPO: emergency power, single, on services panel (V)
ELGP-123.1	GPO: emergency power, single, wall mounted (V)
ELGP-206	GPO: double, on services panel, RCD protected
ELPR-001	BODY PROTECTED ELECTRICAL AREA
FIDI-014	DISPENSER: disposable glove
FIDI-021	DISPENSER: mask
FIDI-025	DISPENSER: paper/hand towel
FIDI-030	DISPENSER: soap
FIDI-031	DISPENSER: soap antiseptic
FIHR-001	BRACKET: arm, cable/hose support, wall mounted
FIHR-011	BRACKET: for monitor
FIHR-019	BRACKET: for suction bottle
FIHR-033	PANEL: for storage bins, wall mount
FIJO-059	BENCH TOP: 600D, joinery under, laminate finish
FIJO-102	CUPBOARD: drawer unit
FIJO-135	CUPBOARD: underbench, double door, adj shelves
FIJO-148	CUPBOARD: wall mount, double door, glazed, adj shelves, lockable
FIRT-012.1	RAIL: equipment - horizontal
FLSK-010	SKIRTING: vinyl, floor vinyl coved, 150H, prefinished
FLVY-006	FLOOR FINISH: vinyl, seamless, coved, non slip, textured
FLVY-007	FLOOR FINISH: vinyl, seamless, coved, standard slip resistant
FQCW-004	BIN: waste, clinical, 120L
FQCW-044	BIN: waste, sharps, wall mounted

CODE	DESCRIPTION
FQSM-016	TROLLEY
FQSN-006	BIN: storage bins, for wall mounted panel
HYBA-009	BASIN: handwash, Type A, scrub
HYTP-037	TAPWARE: mixer, elbow levers
ITCL-004	BUTTON: nurse call, emergency
ITCL-005	BUTTON: nurse call, orderly / porter
ITCL-008	BUTTON: nurse call, staff assist
ITCL-016	CLOCK: clock system slave, analogue
ITIN-025	OUTLET: data, double RJ45, on services panel
ITIN-026	OUTLET: data, double RJ45, wall mounted
ITNE-049	TELEPHONE: handset, desktop
LIFX-008	LIGHT: task light, built in
LIFX-013	LIGHT: procedure, ceiling mounted, small
MGAS-022	OUTLET: medical air (MA), on services panel
MGAS-032	OUTLET: nitrous oxide (N2O), on services panel
MGAS-042	OUTLET: oxygen (O2), on services panel
MGAS-053	OUTLET: scavenge, on services panel
MGAS-062	OUTLET: suction, on services panel
MGFP-002	FLOWMETER: medical air
MGFP-004	FLOWMETER: oxygen
MMBE-010	BED: patient, electric with mattress
MMGE-002	ADAPTER: suction
MMGE-036	FRIDGE: drugs, underbench
MMGE-048	LINEN CARRIER: dirty, single
MMGE-100	SUCTION BOTTLE
MMHA-008	MONITOR: patient, cardiac with vital signs
MMSP-026	SERVICES PANEL: wall mounted
WLPR-019	WALL PROTECTION: crash rail, at 900 AFFL, prefinished PVC
WLWA-004	WALL FINISH: paint, acrylic, washable
WLWA-004	WALL FINISH

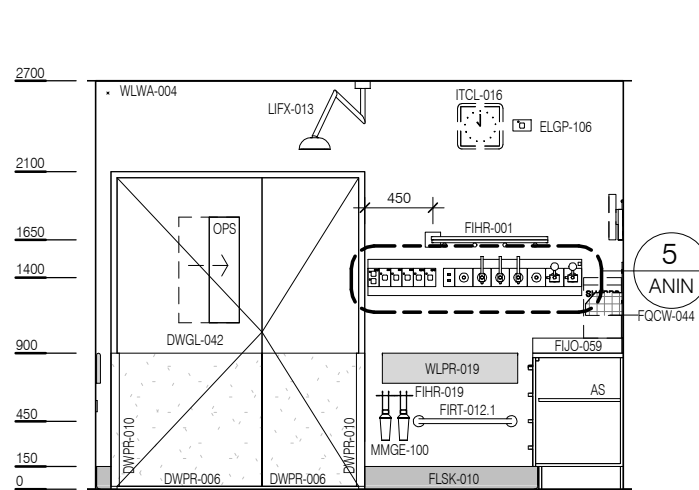
RETIRED



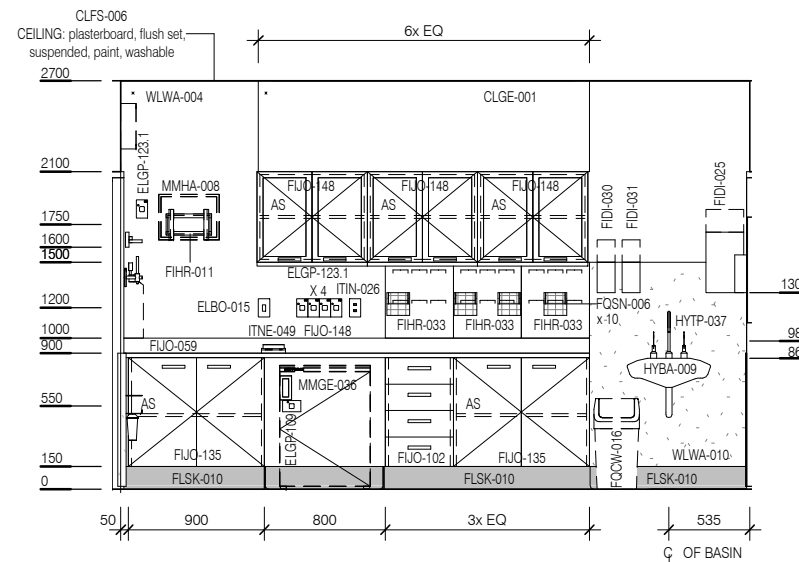
PLAN



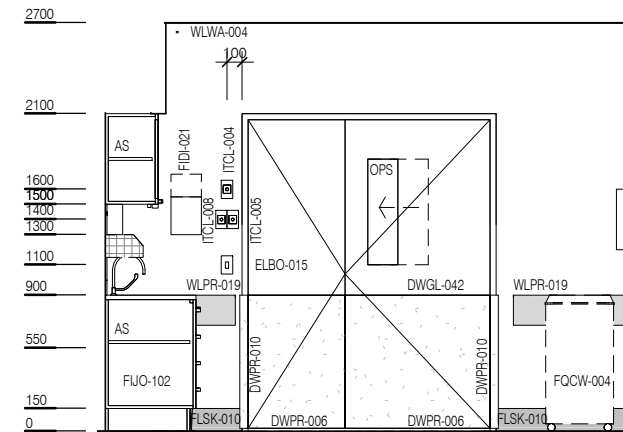
ELEVATION 5 (1 : 25 @ A3)



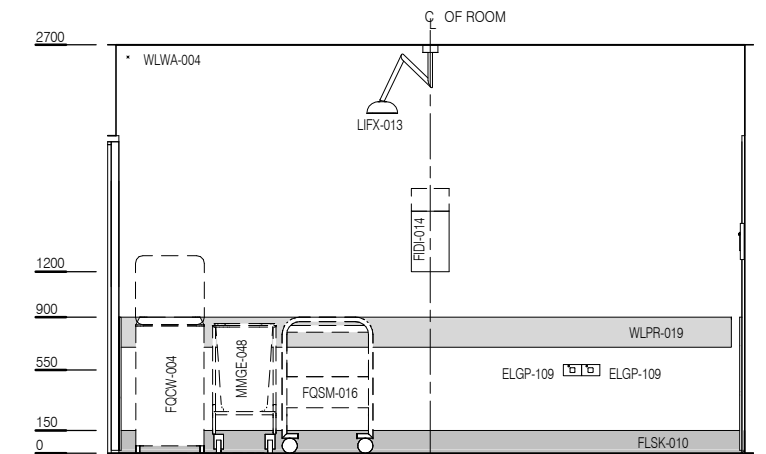
ELEVATION 1



ELEVATION 2



ELEVATION 3



ELEVATION 4



REV	DESCRIPTION	DATE
3	Coding and naming updated	20.03.2017

FOR GUIDANCE

SCALE	RLS Room Code	REV
1 : 50 @ A3	ANIN	3