

# AUSTRALASIAN HFG STANDARD COMPONENTS

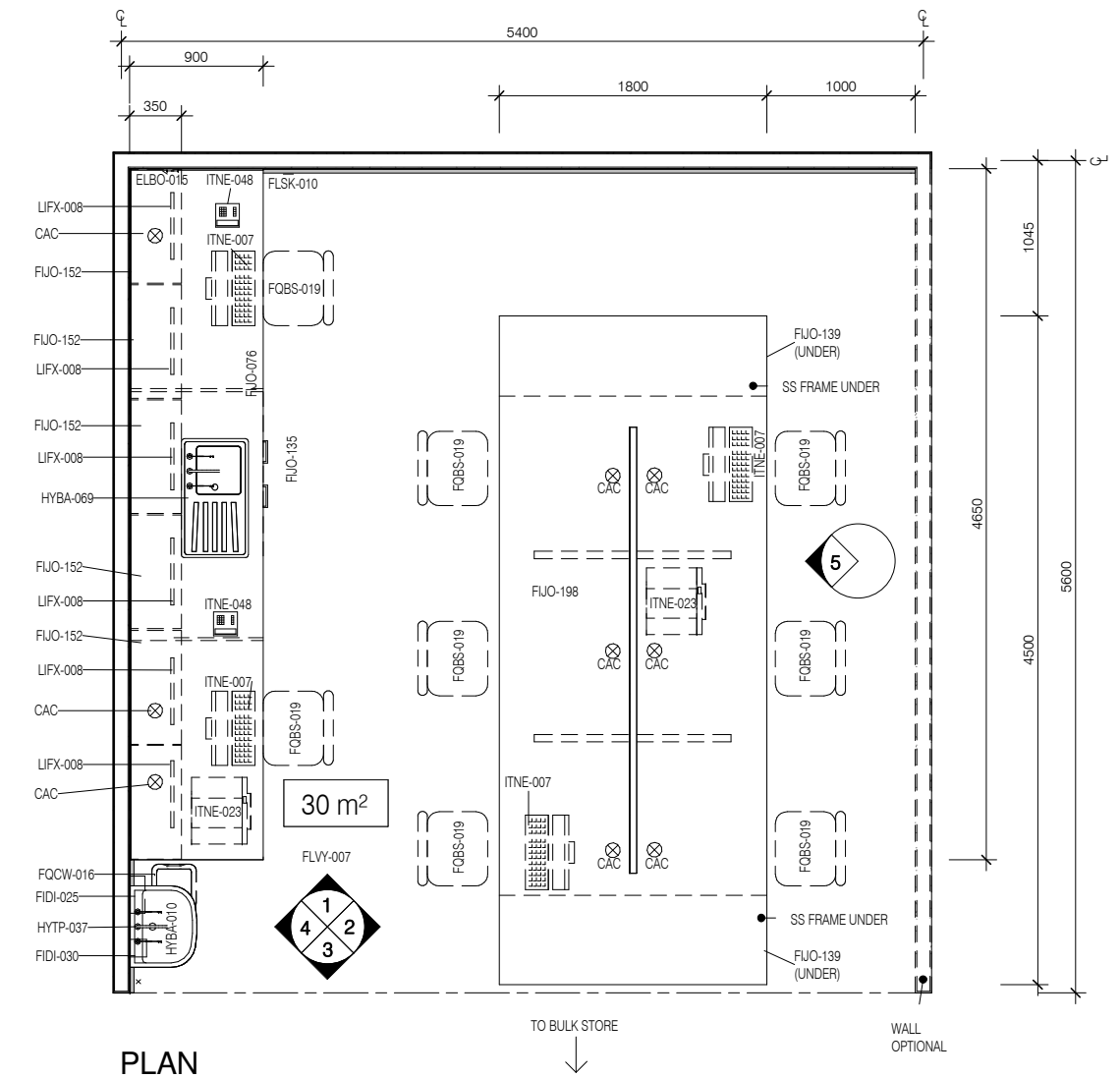
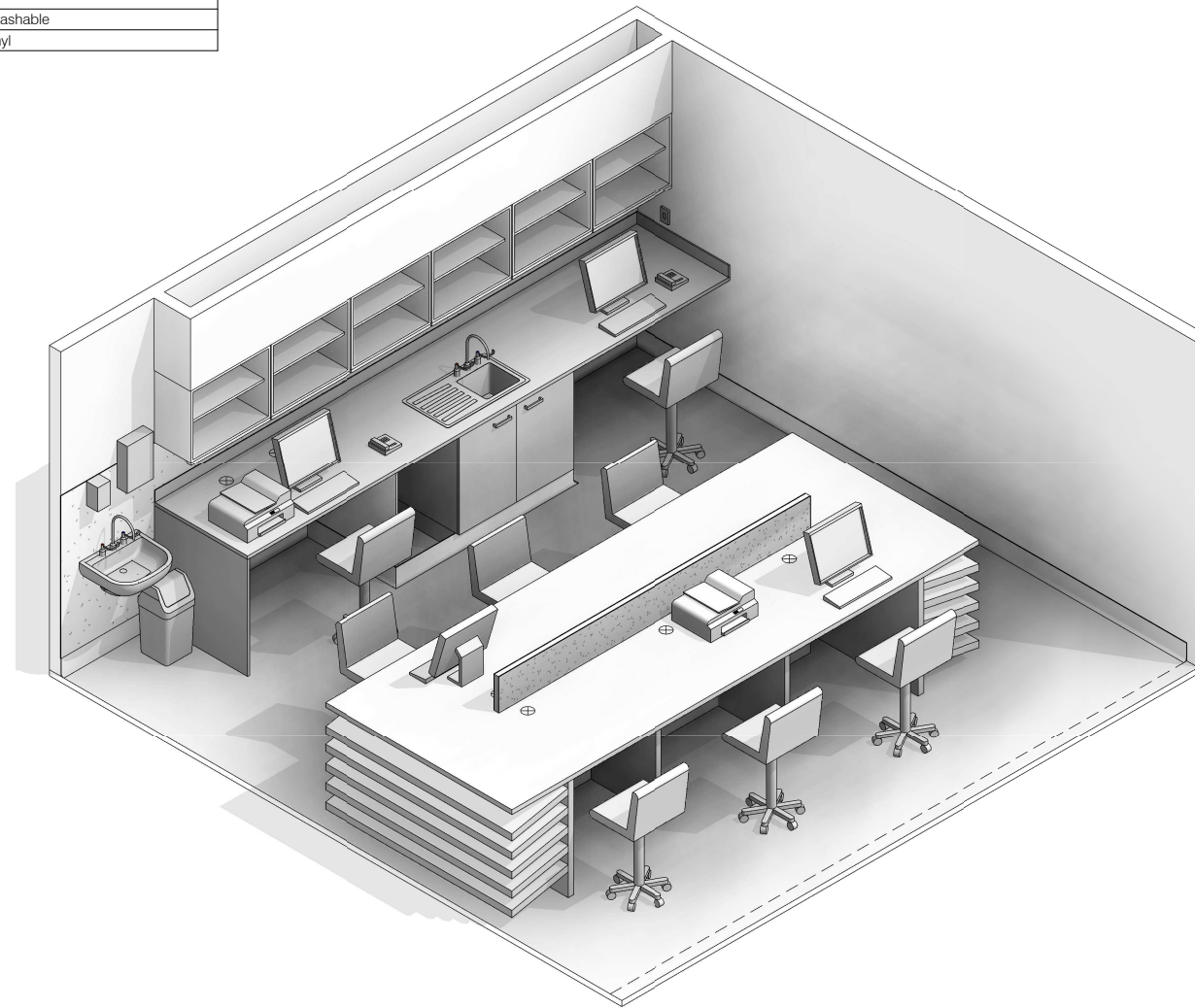
Room Layout Sheet

RLS Room Code: **ASPR-30**

1:50 2.5m 2 1.5 1 0.5 0

Room Name: **ASSEMBLY/ PREPARATION (PHARMACY), 30m<sup>2</sup>**

CODE	DESCRIPTION
CAC	Cable access cap
CLGE-001	CEILING: plasterboard, bulkhead, paint
ELBO-015	SWITCH: light, single
ELGP-208	GPO: double, wall mounted
FIBM-013	NOTICEBOARD: fixed, fabric covered
FIDI-025	DISPENSER: paper/hand towel
FIDI-030	DISPENSER: soap
FUJO-076	BENCH TOP: 900D, joinery under, laminate finish
FUJO-135	CUPBOARD: underbench, double door, adj shelves
FUJO-139	CUPBOARD: underbench, shelf unit, pharmacy shelves
FUJO-152	CUPBOARD: wall mount, shelf unit, adj shelves
FUJO-198	BENCH: workstation, Pharmacy, freestanding (large)
FLSK-010	SKIRTING: vinyl, floor vinyl coved, 150H, prefinished
FLVY-007	FLOOR FINISH: vinyl, seamless, coved, standard slip resistant
FOBS-019	CHAIR: office, ergonomic, high
FOCW-016	BIN: waste, general, 20L
HYBA-010	BASIN: handwash, Type B
HYBA-069	SINK: single, with drainer, 930mmL
HYTP-037	TAPWARE: mixer, elbow levers
ITIN-026	OUTLET: data, double RJ45, wall mounted
ITNE-007	COMPUTER: desktop, with display screen
ITNE-023	PRINTER: networked
ITNE-048	TELEPHONE: handset, cordless
LIFX-008	LIGHT: task light, built in
WLWA-004	WALL FINISH: paint, acrylic, washable
WLWA-010	WALL FINISH: splashback, vinyl



REV	DESCRIPTION	DATE
3	Coding and naming updated	20.03.2017

FOR GUIDANCE

SCALE	RLS Room Code	REV
1 : 50 @ A3	ASPR-30	3

# AUSTRALASIAN HFG STANDARD COMPONENTS

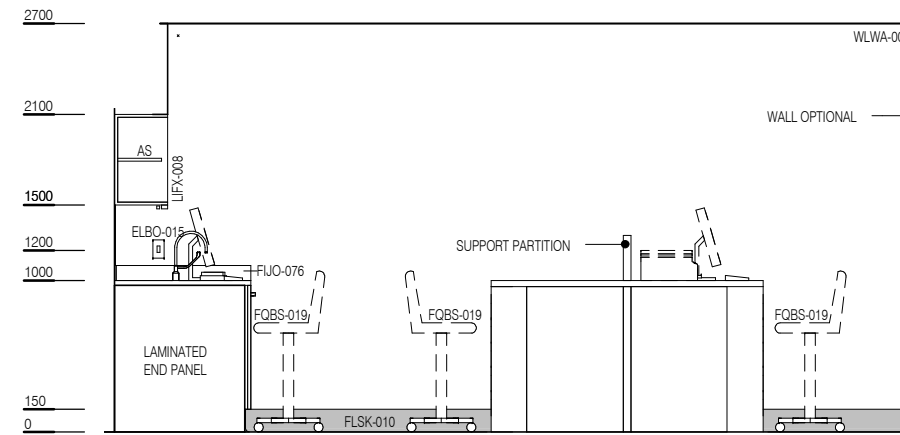
Room Layout Sheet

RLS Room Code: **ASPR-30**

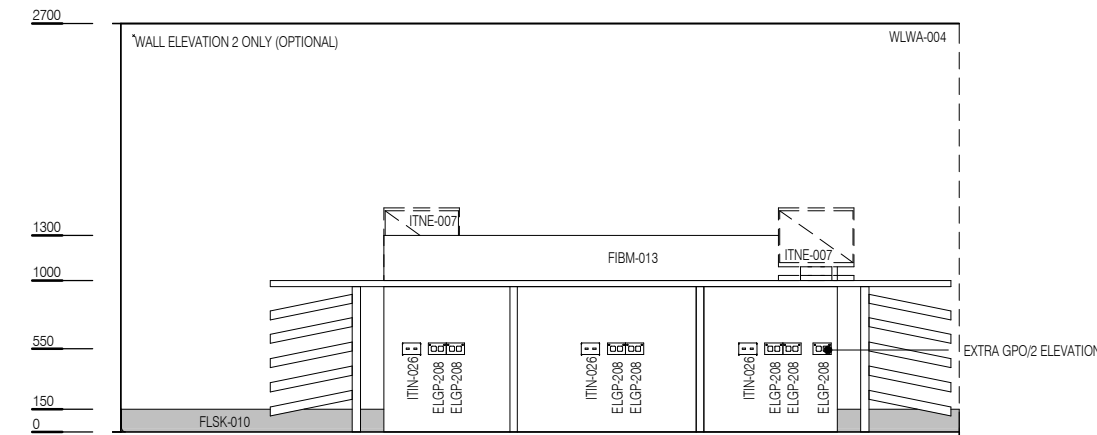
1:50 2.5m 2 1.5 1 0.5 0

Room Name: **ASSEMBLY/ PREPARATION (PHARMACY), 30m<sup>2</sup>**

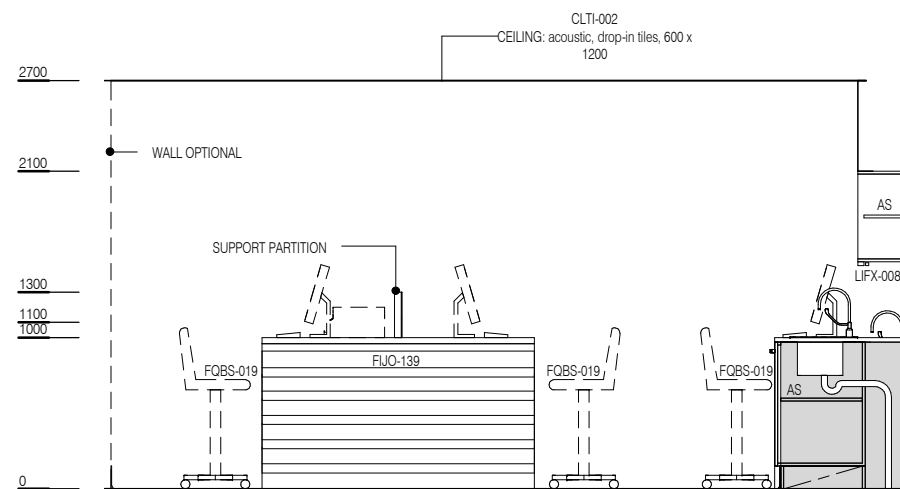
CODE	DESCRIPTION
CAC	Cable access cap
CLGE-001	CEILING: plasterboard, bulkhead, paint
ELBO-015	SWITCH: light, single
ELGP-208	GPO: double, wall mounted
FIBM-013	NOTICEBOARD: fixed, fabric covered
FIDI-025	DISPENSER: paper/hand towel
FIDI-030	DISPENSER: soap
FIJO-076	BENCH TOP: 900D, joinery under, laminate finish
FIJO-135	CUPBOARD: underbench, double door, adj shelves
FIJO-139	CUPBOARD: underbench, shelf unit, pharmacy shelves
FIJO-152	CUPBOARD: wall mount, shelf unit, adj shelves
FIJO-198	BENCH: workstation, Pharmacy, freestanding (large)
FLSK-010	SKIRTING: vinyl, floor vinyl coved, 150H, prefinished
FLVY-007	FLOOR FINISH: vinyl, seamless, coved, standard slip resistant
FOBS-019	CHAIR: office, ergonomic, high
FQCW-016	BIN: waste, general, 20L
HYBA-010	BASIN: handwash, Type B
HYBA-069	SINK: single, with drainer, 930mmL
HYTP-037	TAPWARE: mixer, elbow levers
ITIN-026	OUTLET: data, double RJ45, wall mounted
ITNE-007	COMPUTER: desktop, with display screen
ITNE-023	PRINTER: networked
ITNE-048	TELEPHONE: handset, cordless
LIFX-008	LIGHT: task light, built in
WLWA-004	WALL FINISH: paint, acrylic, washable
WLWA-010	WALL FINISH: splashback, vinyl



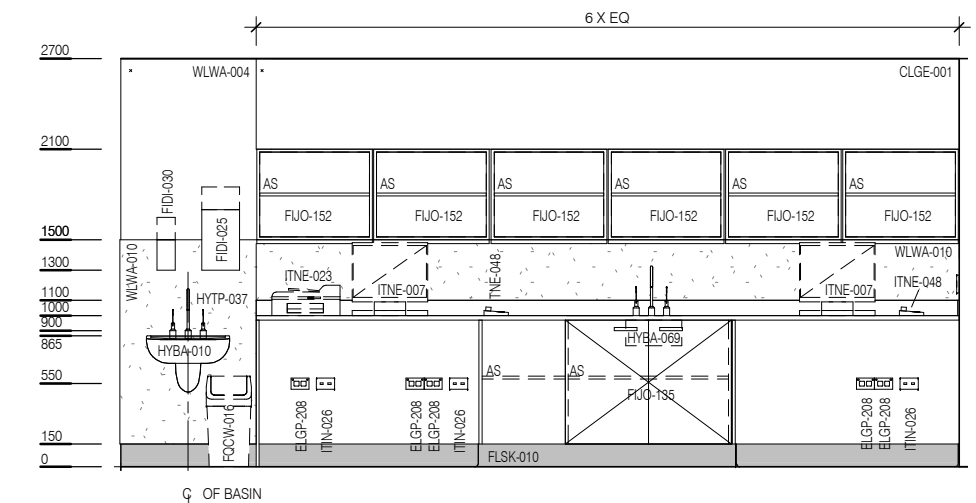
**ELEVATION 1**



**ELEVATION 2 + 5 SIMILAR (MIRRORED)**



**ELEVATION 3**



**ELEVATION 4**



REV	DESCRIPTION	DATE
3	Coding and naming updated	20.03.2017

FOR GUIDANCE

SCALE	RLS Room Code	REV
1 : 50 @ A3	ASPR-30	3