

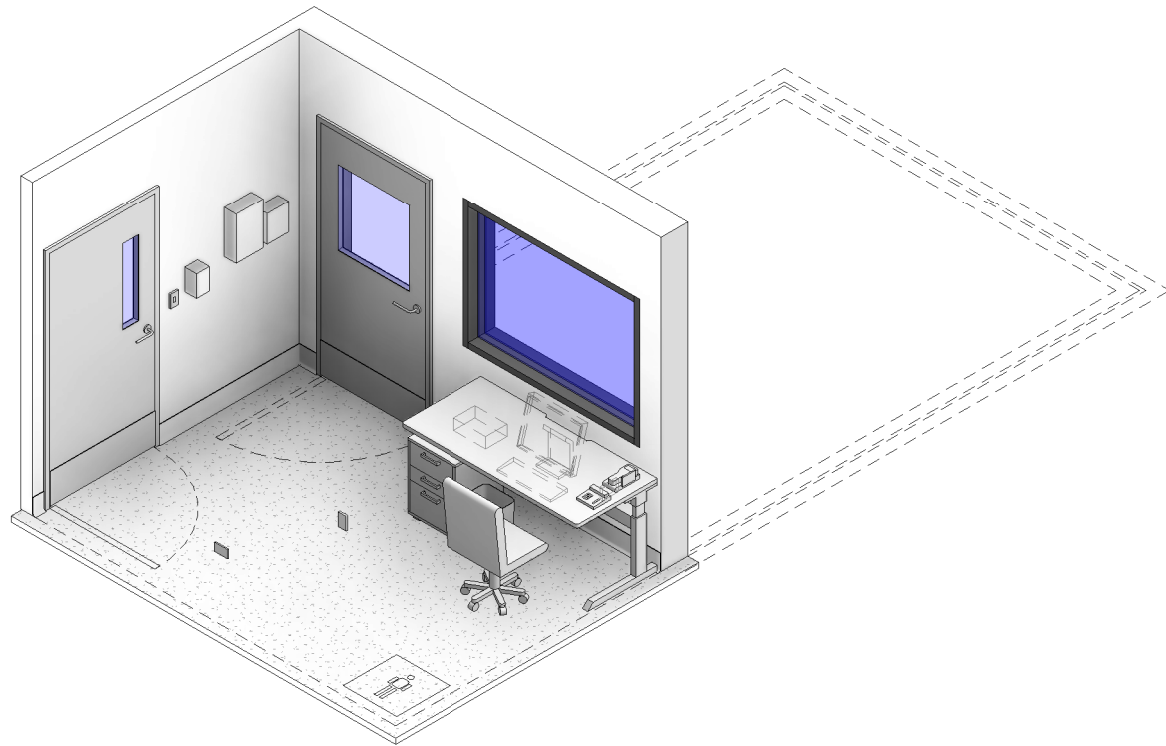
AUSTRALASIAN HFG STANDARD COMPONENTS

Room Layout Sheet

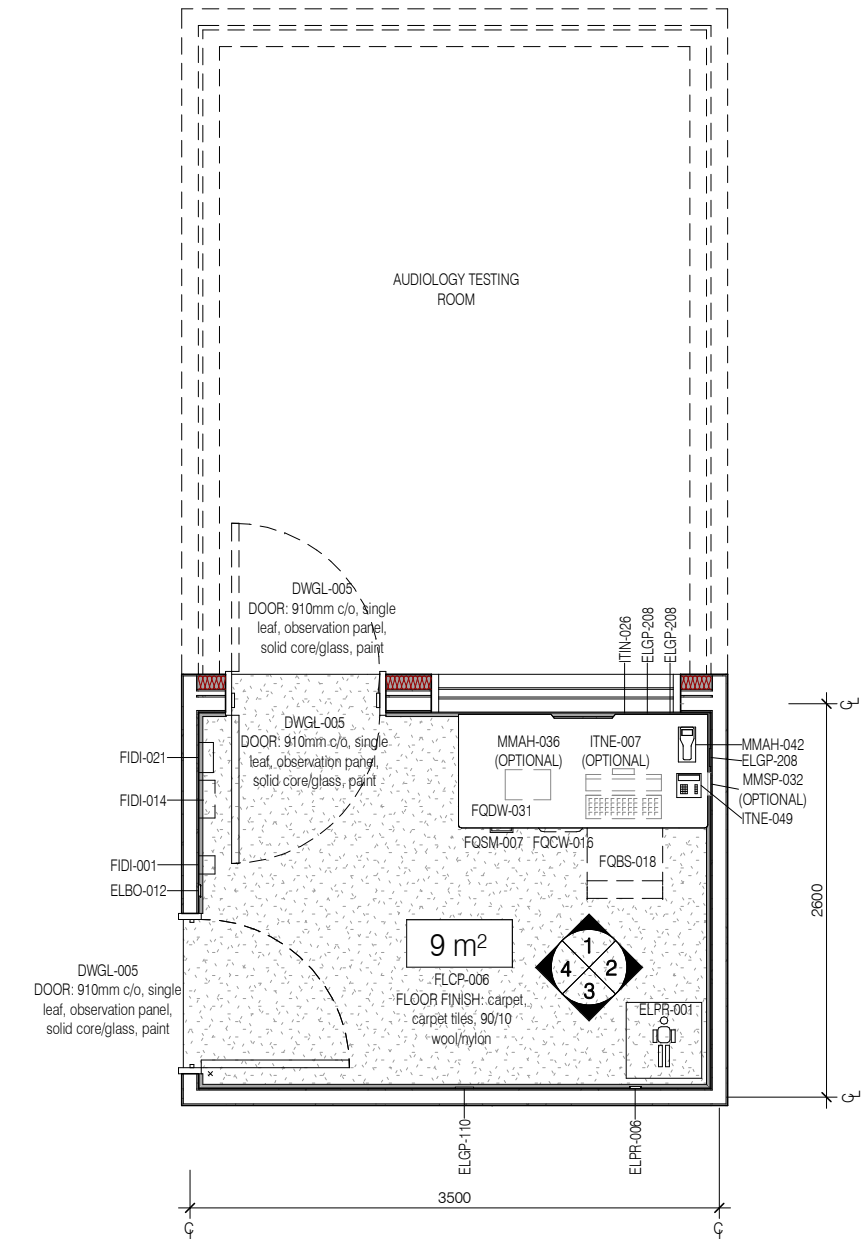
RLS Room Code: **AUD-CR**

Room Name:

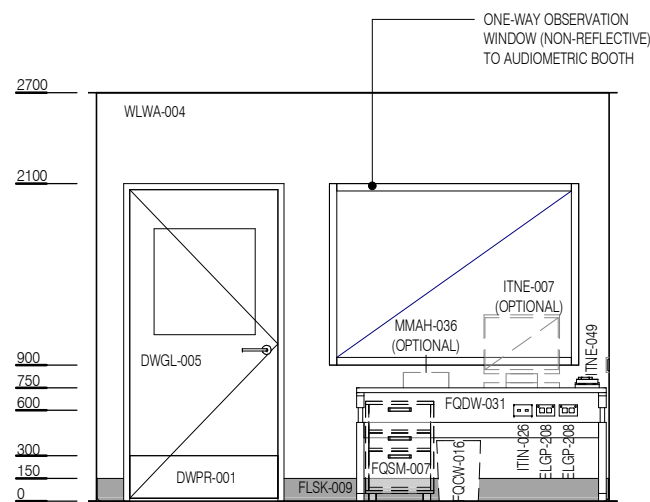
1:50 2.5m 2 1.5 1 0.5 0
AUDIOLOGY CONTROL ROOM



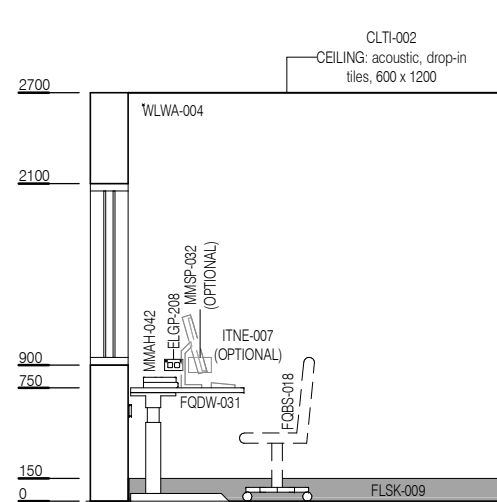
CODE	DESCRIPTION
DWPR-001	DOOR PROTECTION: kickplate, to 300 AFFL
ELBO-012	SWITCH: light, dimmer
ELGP-110	GPO: single, wall mounted, cleaner
ELGP-208	GPO: double, wall mounted
ELPR-001	BODY PROTECTED ELECTRICAL AREA
ELPR-006	RCD: residual current device
FIDI-001	DISPENSER: alcohol based hand rub
FIDI-014	DISPENSER: disposable glove
FIDI-021	DISPENSER: mask
FLCP-006	FLOOR FINISH: carpet, carpet tiles, 90/10 wool/nylon
FLSK-009	SKIRTING: vinyl, feather edged, 150H, prefinished
FQBS-018	CHAIR: office, ergonomic
FQCW-016	BIN: waste, general, 20L
FQDW-031	WORKSTATION: straight, adj height, 1650W x 750D x 750H nom.
FQSM-007	PEDESTAL: mobile, drawer unit, 660H
ITIN-026	OUTLET: data, double RJ45, wall mounted
ITNE-007	COMPUTER: desktop, with display screen
ITNE-049	TELEPHONE: handset, desktop
MMAH-036	CONSOLE: control, audiometric booth
MMAH-042	DEVICE: tympanometer
MMSP-032	SERVICES PANEL: instrument jack
WLWA-004	WALL FINISH: paint, acrylic, washable



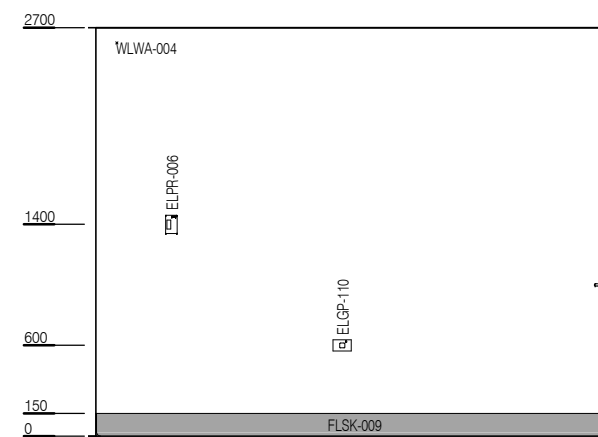
PLAN



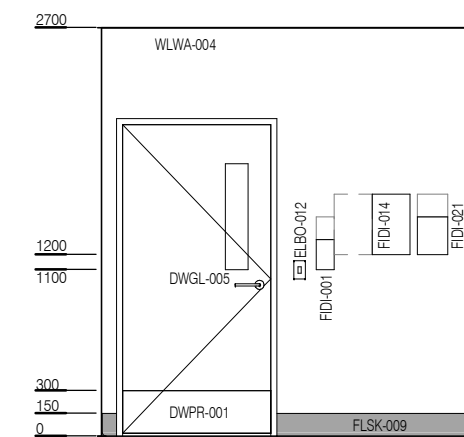
ELEVATION 1



ELEVATION 2



ELEVATION 3



ELEVATION 4



REV	DESCRIPTION	DATE
1	First Issue	26.04.2021

FOR GUIDANCE

SCALE	RLS Room Code	REV
1 : 50 @ A3	AUD-CR	1