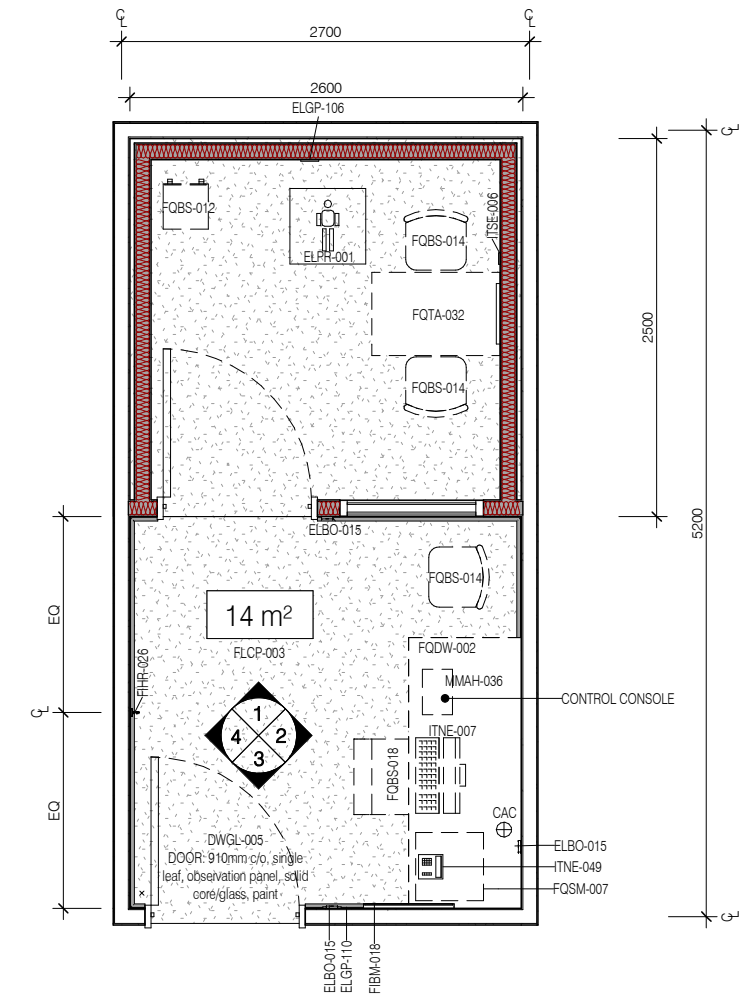
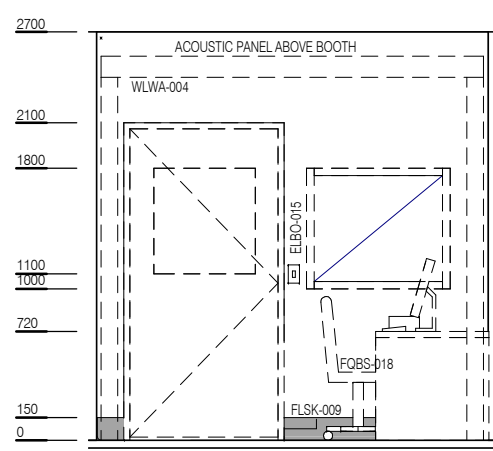


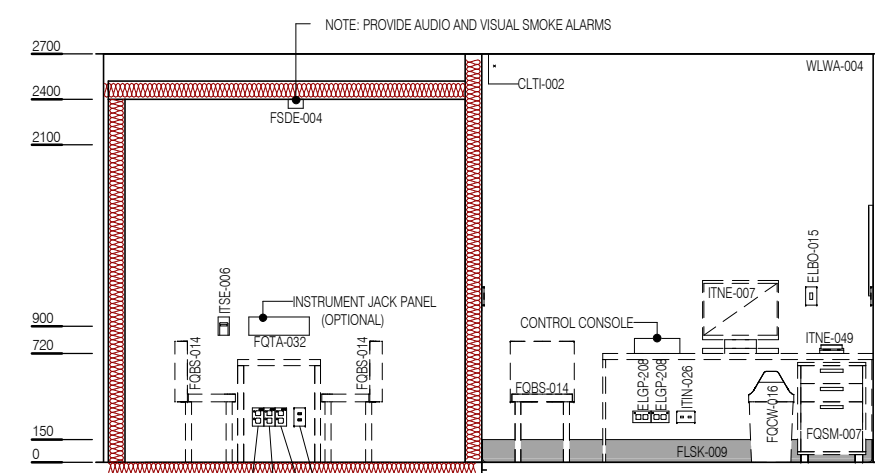
CODE	DESCRIPTION
CAC	Cable access cap
DWPR-003	DOOR PROTECTION: kickplate, to 300 AFFL, vinyl, prefinished
ELBO-015	SWITCH: light, single
ELGP-106	GPO: single, special, for equipment
ELGP-110	GPO: single, wall mounted, cleaner
ELGP-208	GPO: double, wall mounted
ELGP-208.1	GPO: double, wall mounted (V)
ELGP-209.1	GPO: double, wall mounted, RCD protected (V)
ELPR-001	BODY PROTECTED ELECTRICAL AREA
FIBM-018	WHITEBOARD: fixed
FIHR-026	HOOK: coat
FLCP-003	FLOOR FINISH: carpet, broadloom, 48 oz., 90/10 wool/nylon
FLSK-009	SKIRTING: vinyl, feather edged, 150H, prefinished
FOBS-012	CHAIR: child
FOBS-014	CHAIR: client
FOBS-018	CHAIR: office, ergonomic
FQCW-016	BIN: waste, general, 20L
FQDW-002	DESK: adj height, 1800W x 750D x 750H nom.
FQSM-007	PEDESTAL: mobile, drawer unit, 660H
FOTA-032	TABLE: rectangular, 850L x 550W, work height
FSDE-004	DETECTOR: smoke
ITIN-026	OUTLET: data, double RJ45, wall mounted
ITNE-007	COMPUTER: desktop, with display screen
ITNE-049	TELEPHONE: handset, desktop
ITSE-006	BUTTON: duress, fixed
MMAH-005	BOOTH: audiometric
MMAH-036	CONSOLE: control, audiometric booth
MMSP-032	SERVICES PANEL: instrument jack
WLWA-004	WALL FINISH: paint, acrylic, washable



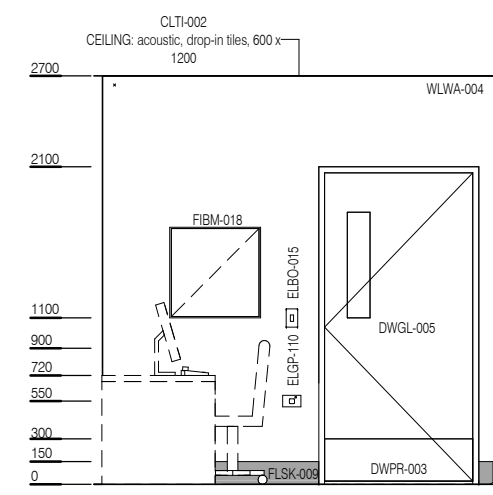
PLAN



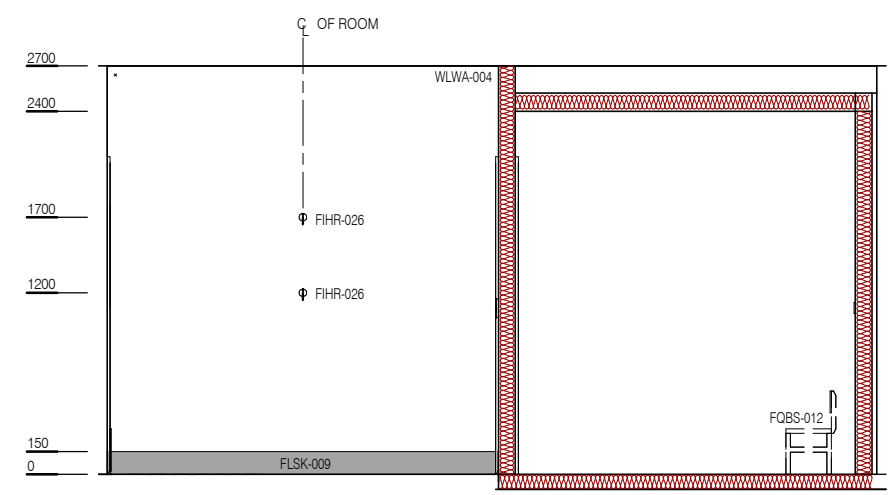
ELEVATION 1



ELEVATION 2



ELEVATION 3



ELEVATION 4