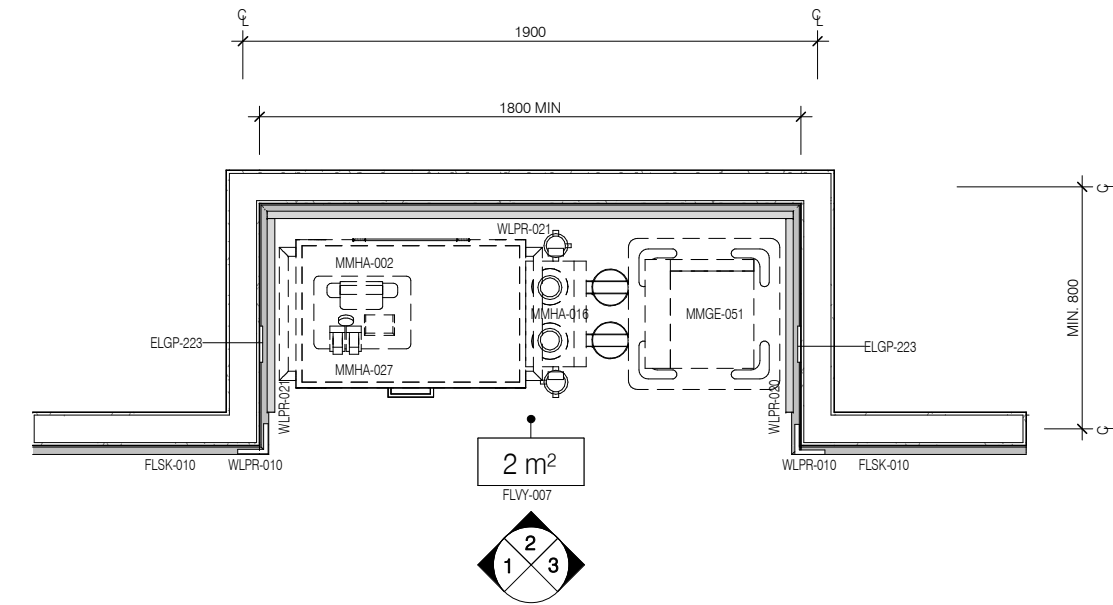
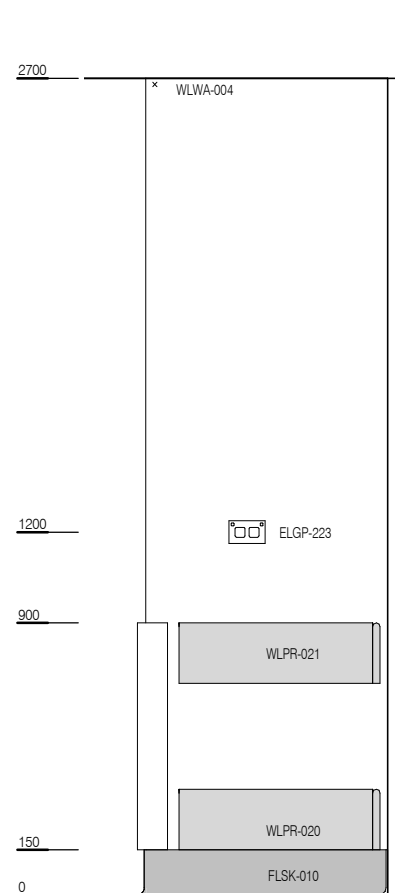


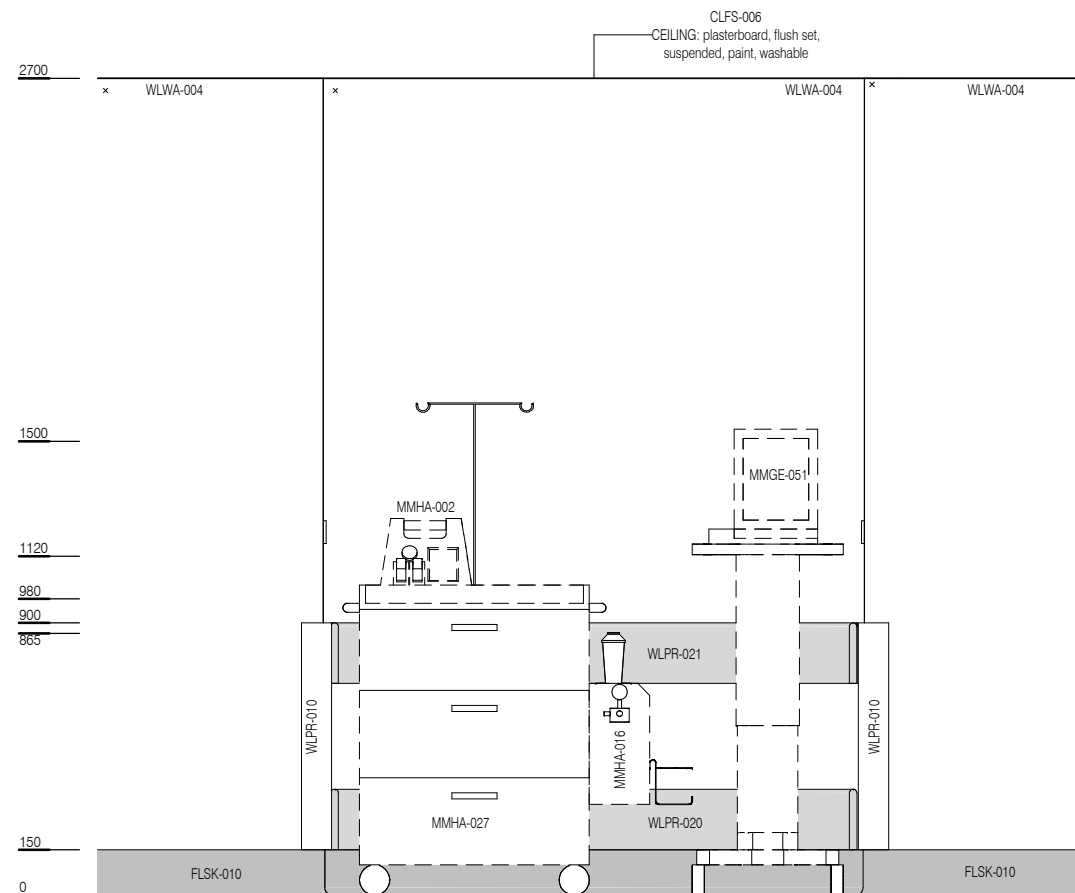
| CODE | DESCRIPTION |
|----------|---|
| ELGP-223 | GPO: emergency power, double, wall mounted |
| FLSK-010 | SKIRTING: vinyl, floor vinyl coved, 150H, prefinished |
| FLYV-007 | FLOOR FINISH: vinyl, seamless, coved, standard slip resistant |
| MMGE-051 | MACHINE: electrocardiography (ECG), c/w trolley |
| MMGE-128 | TROLLEY: medical equipment |
| MMHA-002 | DEFIBRILLATOR |
| MMHA-016 | SUCTION: TWIN-O-VAC UNIT |
| MMHA-027 | TROLLEY: resuscitation, adult |
| WLPR-010 | WALL PROTECTION: corner guards, to 900 AFFL |
| WLPR-020 | WALL PROTECTION: crash rail, at 350 AFFL |
| WLPR-021 | WALL PROTECTION: crash rail, at 900 AFFL |
| WLWA-004 | WALL FINISH: paint, acrylic, washable |



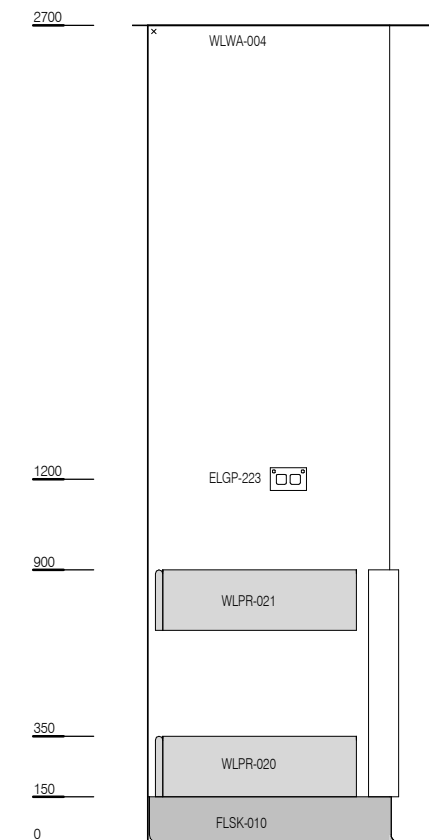
PLAN



ELEVATION 1



ELEVATION 2



ELEVATION 3