

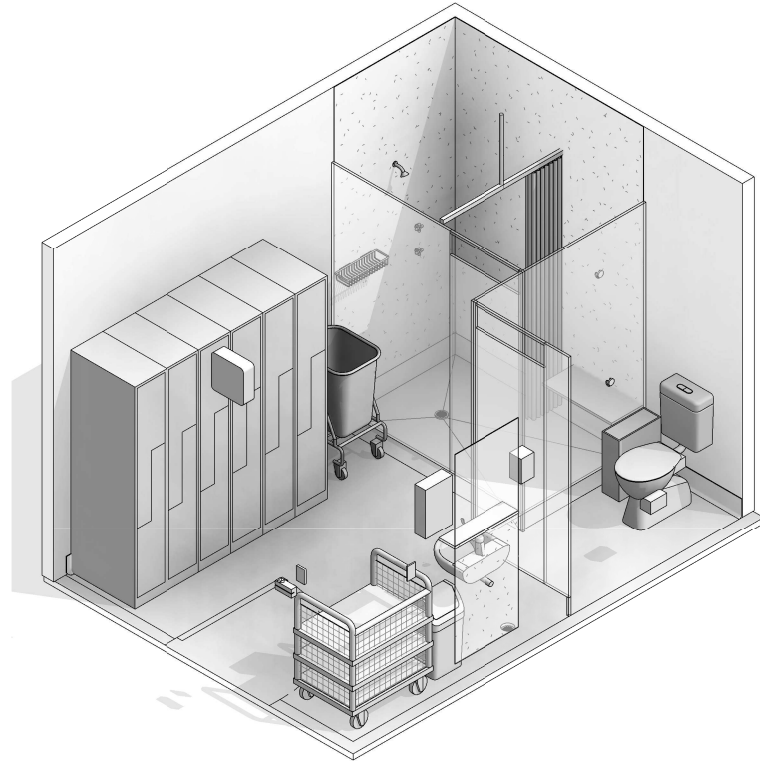
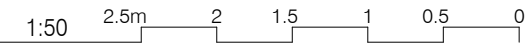
AUSTRALASIAN HFG STANDARD COMPONENTS

Room Layout Sheet

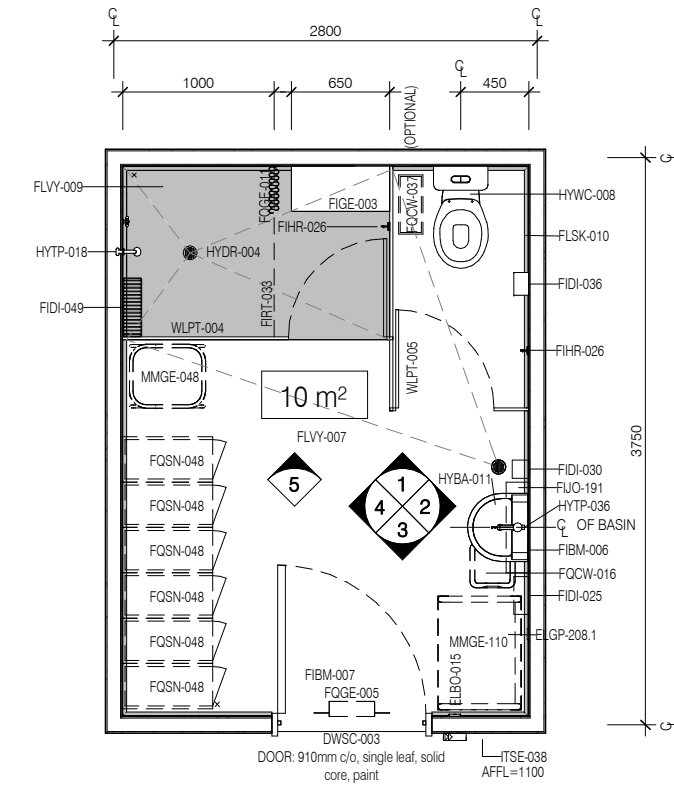
RLS Room Code: CHST-10

Room Name:

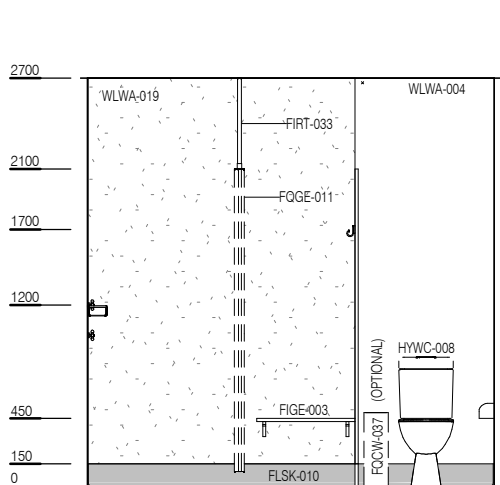
CHANGE - STAFF (MALE / FEMALE), 10m²



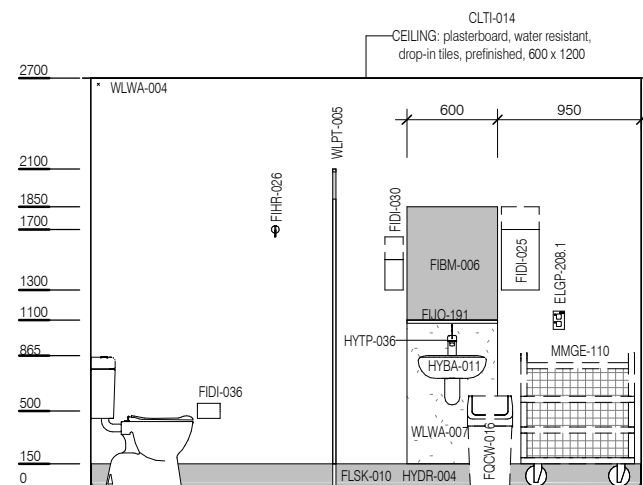
| CODE | DESCRIPTION |
|------------|---|
| DWPR-001 | DOOR PROTECTION: kickplate, to 300 AFFL |
| ELBO-015 | SWITCH: light, single |
| ELGP-208.1 | GPO: double, wall mounted (V) |
| FIBM-006 | MIRROR: fixed, glass |
| FIBM-007 | MIRROR: fixed, glass, full length |
| FIDI-025 | DISPENSER: paper/hand towel |
| FIDI-030 | DISPENSER: soap |
| FIDI-036 | DISPENSER: toilet paper |
| FIDI-049 | HOLDER: soap/shampoo, non-recessed |
| FIGE-003 | BENCH SEAT: fixed, indoor |
| FIHR-026 | HOOK: coat |
| FIJO-191 | SHELF: above basin |
| FIRT-033 | TRACK: curtain, shower |
| FLSK-010 | SKIRTING: vinyl, floor vinyl coved, 150H, prefinished |
| FLVY-007 | FLOOR FINISH: vinyl, seamless, coved, standard slip resistant |
| FLVY-009 | FLOOR FINISH: vinyl, seamless, coved, wet area, non-slip |
| FQCW-016 | BIN: waste, general, 20L |
| FQCW-037 | BIN: waste, sanitary |
| FOGE-005 | CLOCK: analogue, battery operated |
| FOGE-011 | CURTAIN: shower |
| FOSN-048 | LOCKER: 2 tier (half size) |
| HYBA-011 | BASIN: handwash, Type C |
| HYDR-004 | DRAIN: floor waste |
| HYTP-018 | SHOWER: fixed rose |
| HYTP-030 | TAPWARE: cold |
| HYTP-032 | TAPWARE: hot |
| HYTP-036 | TAPWARE: mixer, basin, lever action |
| HYWC-008 | TOILET SUITE: standard |
| ITSE-038 | READER: access control, general |
| MMGE-048 | LINEN CARRIER: dirty, single |
| MMGE-110 | TROLLEY: clean linen, small |
| WLPT-004 | PARTITION: shower |
| WLPT-005 | PARTITION: toilet |
| WLWA-004 | WALL FINISH: paint, acrylic, washable |
| WLWA-007 | WALL FINISH: splashback |
| WLWA-019 | WALL FINISH: vinyl, full height |



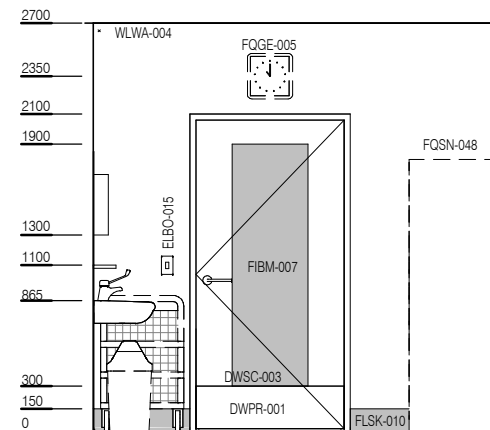
PLAN



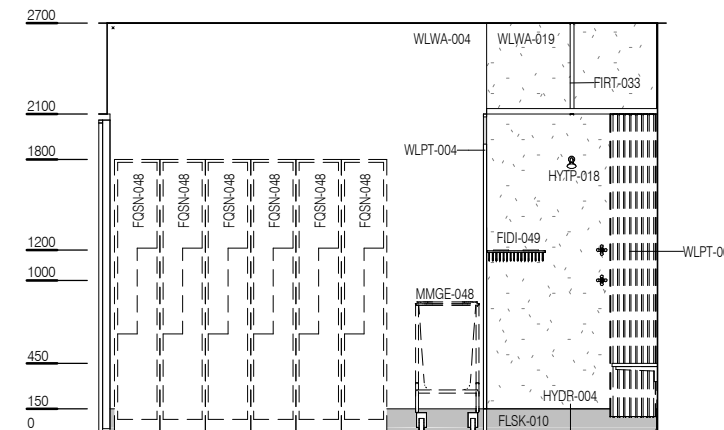
ELEVATION 1



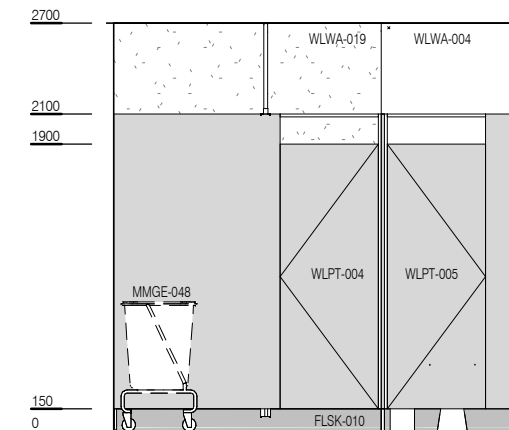
ELEVATION 2



ELEVATION 3



ELEVATION 4



ELEVATION 5



| REV | DESCRIPTION | DATE |
|-----|---------------------------|------------|
| 4 | Coding and naming updated | 20.03.2017 |

FOR GUIDANCE

| SCALE | RLS Room Code | REV |
|-------------|---------------|-----|
| 1 : 50 @ A3 | CHST-10 | 4 |