

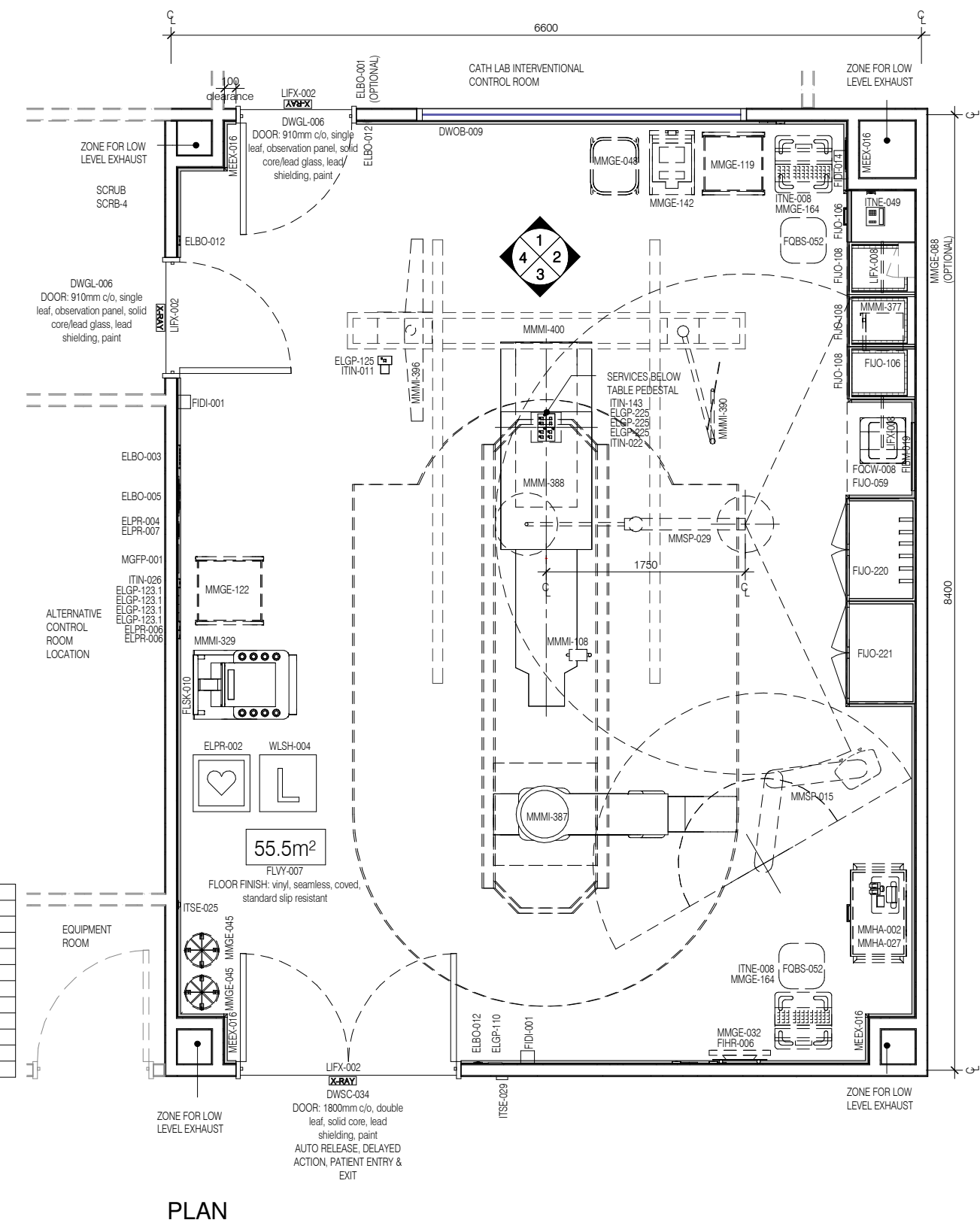
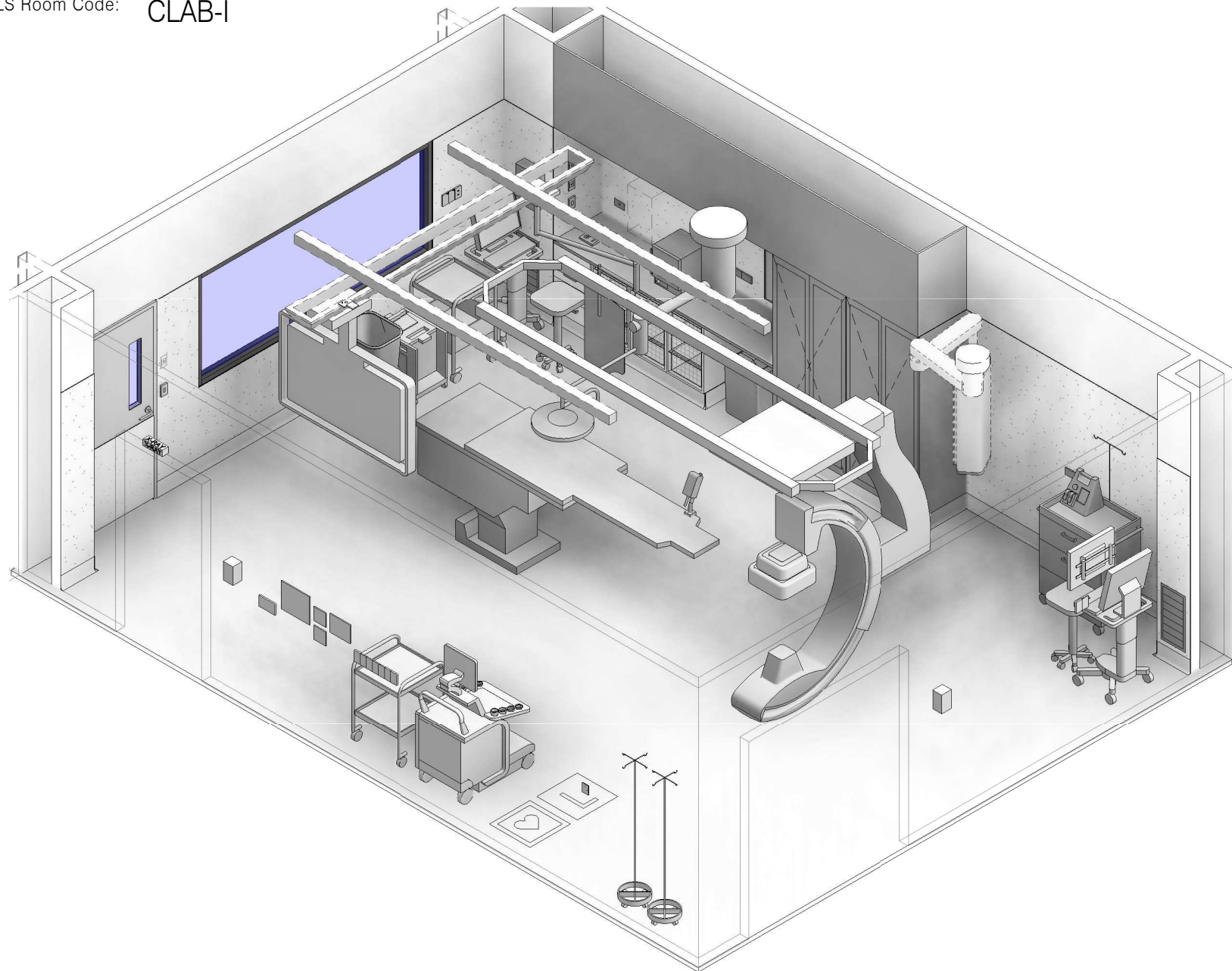
# AUSTRALASIAN HFG STANDARD COMPONENTS

Room Layout Sheet

RLS Room Code: **CLAB-I**

1:50 2.5m 2 1.5 1 0.5 0

Room Name: **CATHETER LABORATORY - INTERVENTIONAL**



**PLAN**

NOTE: REFER TO RDS FOR PENDANT MOUNTED SERVICES AS THESE ITEMS ARE NOT INCLUDED IN THIS SCHEDULE

CODE	DESCRIPTION
DWOB-009	OBSERVATION: internal window, lead glass, clear
DWPR-005	DOOR PROTECTION: protection plate to 900 AFFL
ELBO-001	BUTTON: emergency stop
ELBO-003	CONTROL PANEL: lighting
ELBO-005	EQUIPOTENTIAL JUNCTION BOX
ELBO-012	SWITCH: light, dimmer
ELGP-110	GPO: single, wall mounted, cleaner
ELGP-123.1	GPO: emergency power, single, wall mounted (V)
ELGP-125	GPO: emergency power, single, ceiling mounted
ELGP-223	GPO: emergency power, double, wall mounted
ELGP-225	GPO: emergency power, double, in floorbox
ELPR-002	CARDIAC PROTECTED ELECTRICAL AREA
ELPR-004	MONITOR: line isolation
ELPR-006	RCD: residual current device
ELPR-007	MONITOR: UPS Status indicator
FIBM-019	WHITEBOARD: fixed, magnetic
FIDI-001	DISPENSER: alcohol based hand rub
FIDI-014	DISPENSER: disposable glove
FIHR-006	BRACKET: for display screen, wall mounted
FUO-059	BENCH TOP: 600D, joinery under, laminate finish
FUO-106	CUPBOARD: drawer unit, 4 equal
FUO-108	CUPBOARD: drawer unit, baskets, 3 x Wire (400mm wide)
FUO-212	BULKHEAD: joinery
FUO-220	CUPBOARD: tall, double door, glazed, catheter hanging
FUO-221	CUPBOARD: tall, double door, glazed
FLSK-010	SKIRTING: vinyl, floor vinyl coved, 150H, prefinished
FLVY-007	FLOOR FINISH: vinyl, seamless, coved, standard slip resistant
FOBS-052	STOOL: mobile, high, adj height

CODE	DESCRIPTION
FOCW-008	BIN: waste, clinical, 50L
ITCL-004	BUTTON: nurse call, emergency
ITCL-008	BUTTON: nurse call, staff assist
ITIN-011	OUTLET: data, single RJ45, ceiling mounted
ITIN-016	OUTLET: data, single RJ45, wall mounted
ITIN-022	OUTLET: data, double RJ45, in floorbox
ITIN-026	OUTLET: data, double RJ45, wall mounted
ITIN-143	FLOORBOX: for power, data, AV, flush mounted
ITNE-008	COMPUTER: for workstation on wheels
ITNE-049	TELEPHONE: handset, desktop
ITSE-025	DOOR RELEASE: access control, remote activation
ITSE-029	INTERCOM: audio, wall mount
LIFX-002	LIGHT: illuminated sign, "X-Ray in Use"
LIFX-008	LIGHT: task light, built in
MEEC-016	RETURN AIR: grille, low level
MGFP-001	ALARM PANEL: medical gases
MMGE-032	DISPLAY SCREEN: slave, for patient monitor
MMGE-045	IV STAND: mobile
MMGE-048	LINEN CARRIER: dirty, single
MMGE-088	SAFE: dangerous drugs, small
MMGE-119	TROLLEY: equipment
MMGE-122	TROLLEY: gowns
MMGE-142	TROLLEY: sharps bin
MMGE-164	WORKSTATION ON WHEELS: clinical, mobile
MMHA-002	DEFIBRILLATOR
MMHA-027	TROLLEY: resuscitation, adult
MMMI-108	INJECTOR: contrast, table mounted
MMMI-329	DEVICE: imaging, ultrasound scanning unit

CODE	DESCRIPTION
MMMI-377	WARMER: contrast
MMMI-387	SYSTEM: imaging, cath lab, single plane, ceiling
MMMI-388	TABLE: operating, fixed, narrow, cath lab, single plane
MMMI-390	SHIELD: radiation, upper body, mobile, cath lab
MMMI-396	DISPLAY SCREEN: cath lab, multi modality
MMMI-400	STAND: ceiling, with traverse bridge, cath lab
MMSP-015	PENDANT: single, anaesthetic (fixed or adjustable height)
MMSP-029	LIGHT: operating, single, 550 diam nom.
WLSH-004	SHIELDING: lead lining
WLWA-005	WALL FINISH: paint, scrub resistant
WLWA-023	WALL FINISH: vinyl, to 2100 AFFL



REV	DESCRIPTION	DATE
4	General update following ERG review	13.05.2020

**FOR GUIDANCE**

SCALE	RLS Room Code	REV
1 : 50 @ A3	CLAB-I	4

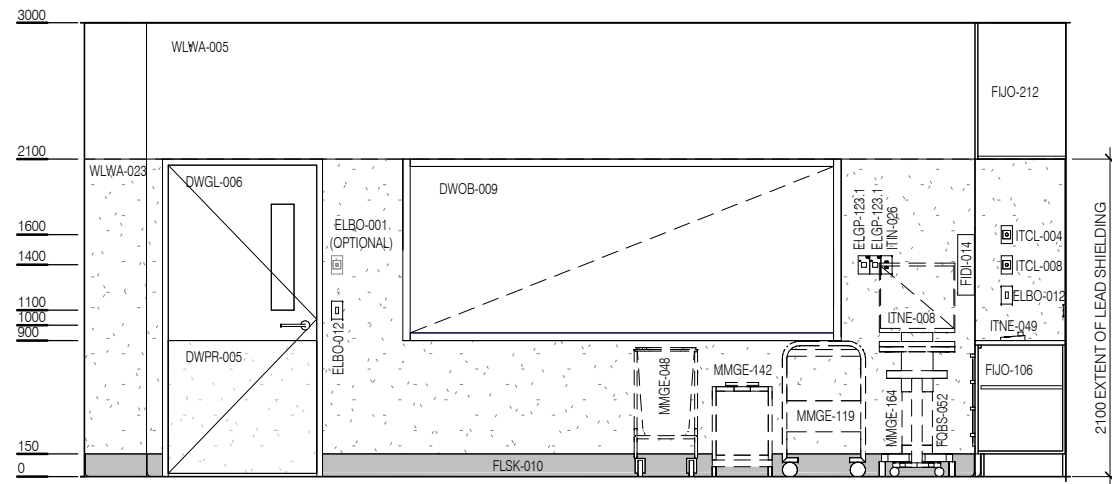
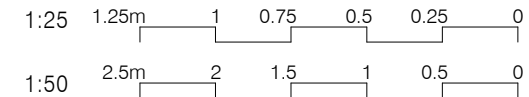
# AUSTRALASIAN HFG STANDARD COMPONENTS

Room Layout Sheet

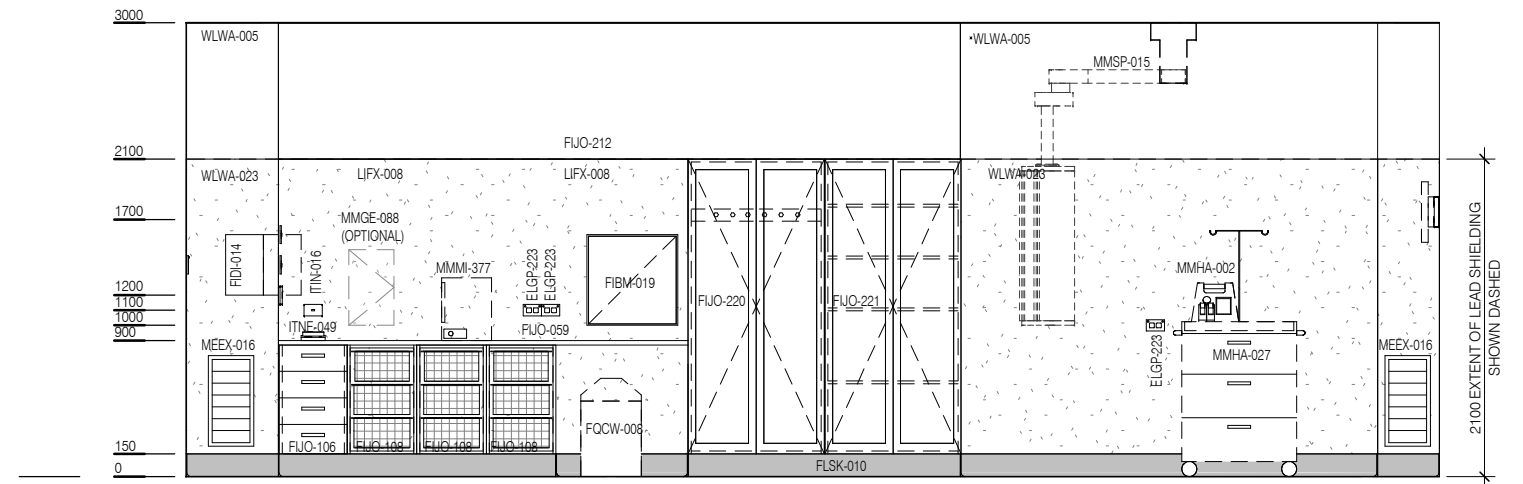
RLS Room Code: **CLAB-I**

Room Name:

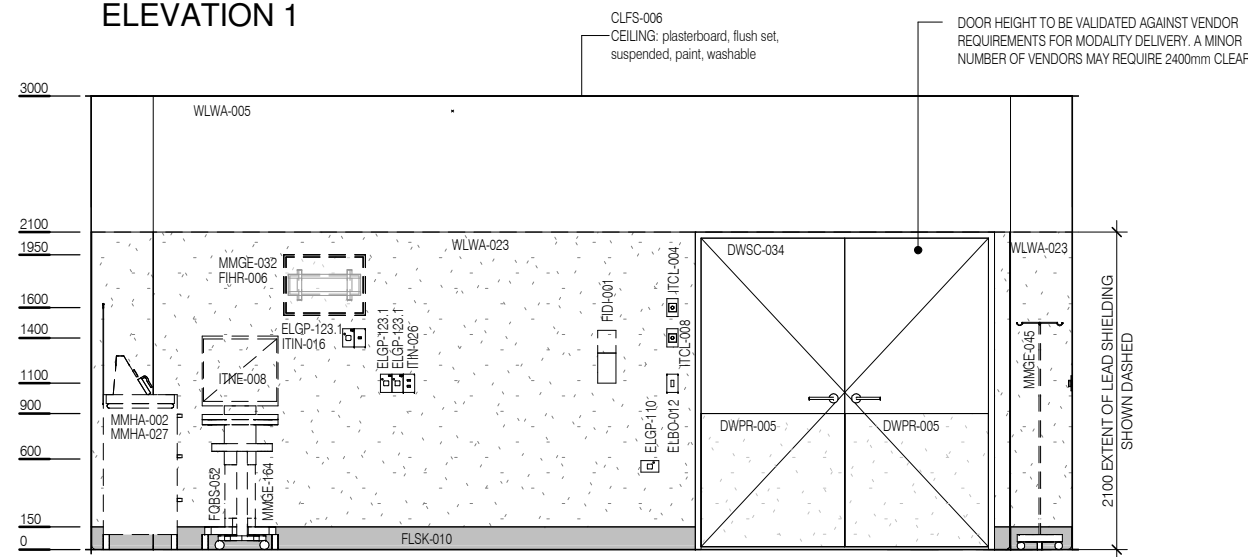
**CATHETER LABORATORY - INTERVENTIONAL**



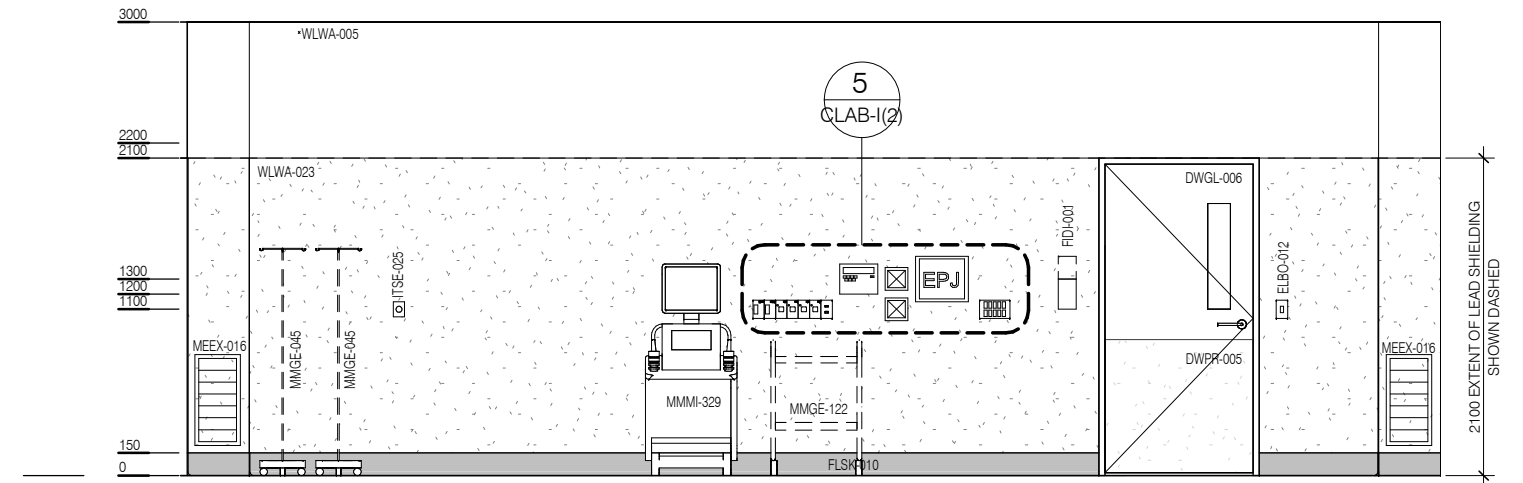
**ELEVATION 1**



**ELEVATION 2**



**ELEVATION 3**

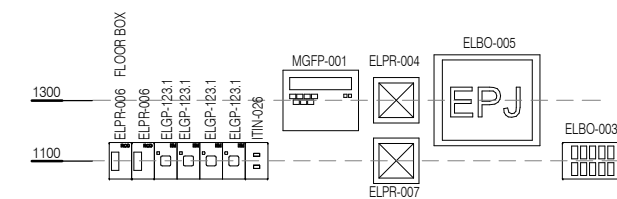


**ELEVATION 4**

CODE	DESCRIPTION
DWOB-009	OBSERVATION: internal window, lead glass, clear
DWPR-005	DOOR PROTECTION: protection plate to 900 AFFL
ELBO-001	BUTTON: emergency stop
ELBO-003	CONTROL PANEL: lighting
ELBO-005	EQUIPOTENTIAL JUNCTION BOX
ELBO-012	SWITCH: light, dimmer
ELGP-110	GPO: single, wall mounted, cleaner
ELGP-123.1	GPO: emergency power, single, wall mounted (V)
ELGP-125	GPO: emergency power, single, ceiling mounted
ELGP-223	GPO: emergency power, double, wall mounted
ELGP-225	GPO: emergency power, double, in floorbox
ELPR-002	CARDIAC PROTECTED ELECTRICAL AREA
ELPR-004	MONITOR: line isolation
ELPR-006	RCD: residual current device
ELPR-007	MONITOR:UPS Status indicator
FIBM-019	WHITEBOARD: fixed, magnetic
FIDI-001	DISPENSER: alcohol based hand rub
FIDI-014	DISPENSER: disposable glove
FIHR-006	BRACKET: for display screen, wall mounted
FJJO-059	BENCH TOP: 600D, joinery under, laminate finish
FJJO-106	CUPBOARD: drawer unit, 4 equal
FJJO-108	CUPBOARD: drawer unit, baskets, 3 x Wire (400mm wide)
FJJO-212	BULKHEAD: joinery
FJJO-220	CUPBOARD: tall, double door, glazed, catheter hanging
FJJO-221	CUPBOARD: tall, double door, glazed
FLSK-010	SKIRTING: vinyl, floor vinyl coved, 150H, prefinished
FLVY-007	FLOOR FINISH: vinyl, seamless, coved, standard slip resistant
FQBS-052	STOOL: mobile, high, adj height

CODE	DESCRIPTION
FQCW-008	BIN: waste, clinical, 50L
ITCL-004	BUTTON: nurse call, emergency
ITCL-008	BUTTON: nurse call, staff assist
ITIN-011	OUTLET: data, single RJ45, ceiling mounted
ITIN-016	OUTLET: data, single RJ45, wall mounted
ITIN-022	OUTLET: data, double RJ45, in floorbox
ITIN-026	OUTLET: data, double RJ45, wall mounted
ITIN-143	FLOORBOX: for power, data, AV, flush mounted
ITNE-008	COMPUTER: for workstation on wheels
ITNE-049	TELEPHONE: handset, desktop
ITSE-025	DOOR RELEASE: access control, remote activation
ITSE-029	INTERCOM: audio, wall mount
LIFX-002	LIGHT: illuminated sign, 'X-Ray in Use'
LIFX-008	LIGHT: task light, built in
MEEEX-016	RETURN AIR: grille, low level
MGFP-001	ALARM PANEL: medical gases
MMGE-032	DISPLAY SCREEN: slave, for patient monitor
MMGE-045	IV STAND: mobile
MMGE-048	LINEN CARRIER: dirty, single
MMGE-088	SAFE: dangerous drugs, small
MMGE-119	TROLLEY: equipment
MMGE-122	TROLLEY: gowns
MMGE-142	TROLLEY: sharps bin
MMGE-164	WORKSTATION ON WHEELS: clinical, mobile
MMHA-002	DEFIBRILLATOR
MMHA-027	TROLLEY: resuscitation, adult
MMMI-108	INJECTOR: contrast, table mounted
MMMI-329	DEVICE: imaging, ultrasound scanning unit

CODE	DESCRIPTION
MMMI-377	WARMER: contrast
MMMI-387	SYSTEM: imaging, cath lab, single plane, ceiling
MMMI-388	TABLE: operating, fixed, narrow, cath lab, single plane
MMMI-390	SHIELD: radiation, upper body, mobile, cath lab
MMMI-396	DISPLAY SCREEN: cath lab, multi modality
MMMI-400	STAND: ceiling, with traverse bridge, cath lab
MMSP-015	PENDANT: single, anaesthetic (fixed or adjustable height)
MMSP-029	LIGHT: operating, single, 550 diam nom.
WLSH-004	SHIELDING: lead lining
WLWA-005	WALL FINISH: paint, scrub resistant
WLWA-023	WALL FINISH: vinyl, to 2100 AFFL



**ELEVATION 5 ( 1 : 25 @ A3 )**

NOTE: REFER TO RDS FOR PENDANT MOUNTED SERVICES AS THESE ITEMS ARE NOT INCLUDED IN THIS SCHEDULE



REV	DESCRIPTION	DATE
4	General update following ERG review	13.05.2020

FOR GUIDANCE

SCALE	RLS Room Code	REV
1 : 50 @ A3	CLAB-I	4