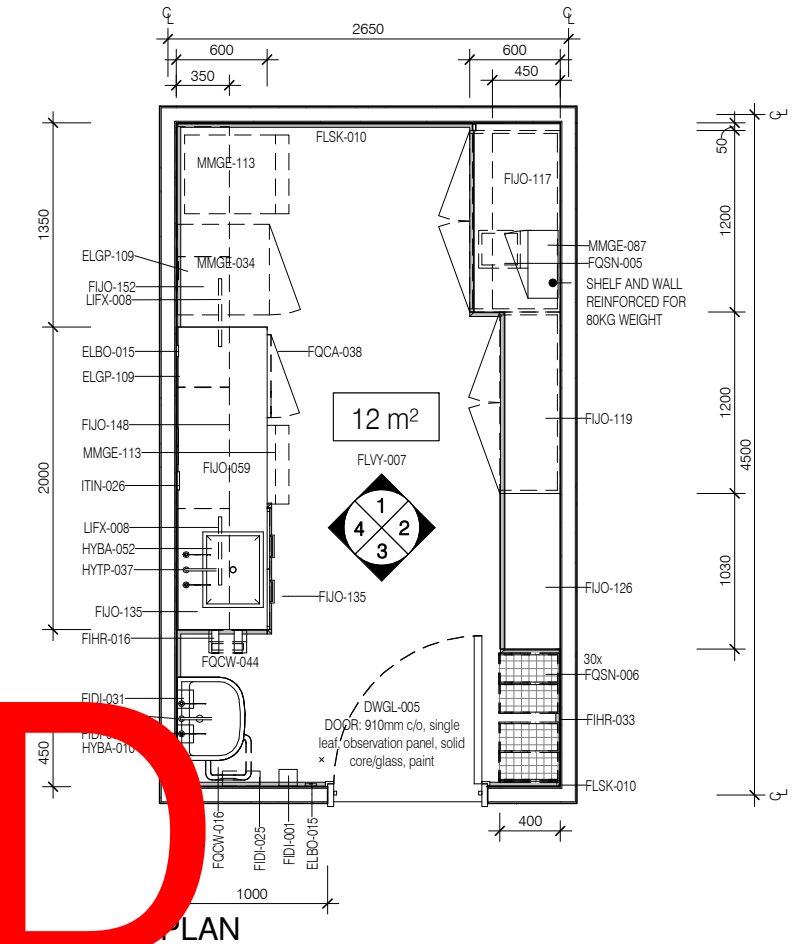
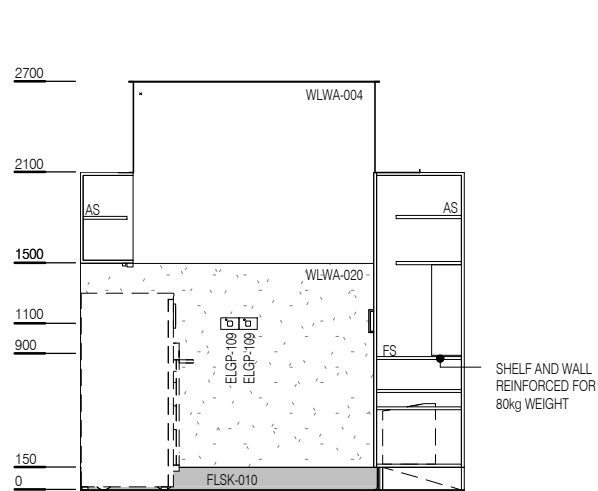


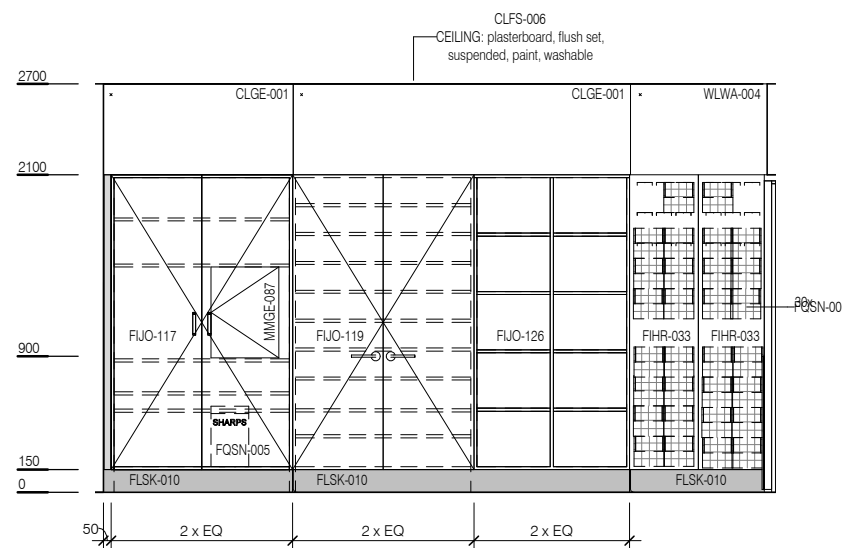
CODE	DESCRIPTION
CLGE-001	CEILING: plasterboard, bulkhead, paint
DWPR-006	DOOR PROTECTION: protection plate, to 900 AFFL, PVC, prefinished
DWPR-010	DOOR PROTECTION: to door frame, PVC, prefinished
ELBO-015	SWITCH: light, single
ELGP-109	GPO: single, wall mounted
FIDI-001	DISPENSER: alcohol based hand rub
FIDI-025	DISPENSER: paper/hand towel
FIDI-030	DISPENSER: soap
FIDI-031	DISPENSER: soap antiseptic
FIHR-016	BRACKET: for sharps bin
FIHR-033	PANEL: for storage bins, wall mount
FUJO-059	BENCH TOP: 600D, joinery under, laminate finish
FUJO-117	CUPBOARD: tall, double door, adj shelves, lockable
FUJO-119	CUPBOARD: tall, double door, pharmacy shelves, lockable
FUJO-126	CUPBOARD: tall, shelf unit, adj shelves
FUJO-135	CUPBOARD: underbench, double door, adj shelves
FUJO-148	CUPBOARD: wall mount, double door, glazed, adj shelves, lockable
FUJO-152	CUPBOARD: wall mount, shelf unit, adj shelves
FLSK-010	SKIRTING: vinyl, floor vinyl coved, 150H, prefinished
FLVY-007	FLOOR FINISH: vinyl, seamless, coved, standard slip resistant
FQCA-038	FRIDGE: domestic, underbench, 80L
FQCW-016	BIN: waste, general, 20L
FQCW-044	BIN: waste, sharps, wall mounted
FQSN-005	BIN: pharmacy returns
FQSN-006	BIN: storage bins, for wall mounted panel
HYBA-010	BASIN: handwash, Type B
HYBA-052	SINK: single, 450 x 350 x 250D
HYTP-037	TAPWARE: mixer, elbow levers
ITIN-026	OUTLET: data, double RJ45, wall mounted
LIFX-008	LIGHT: task light, built in



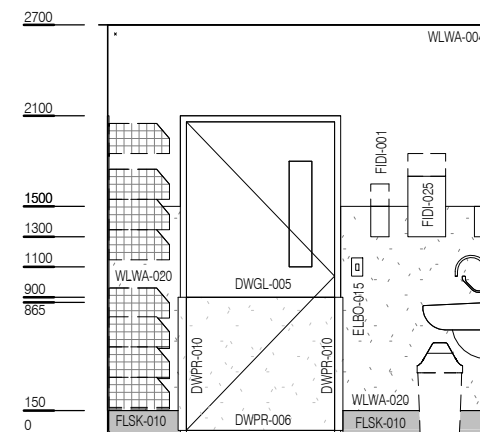
RETIRED



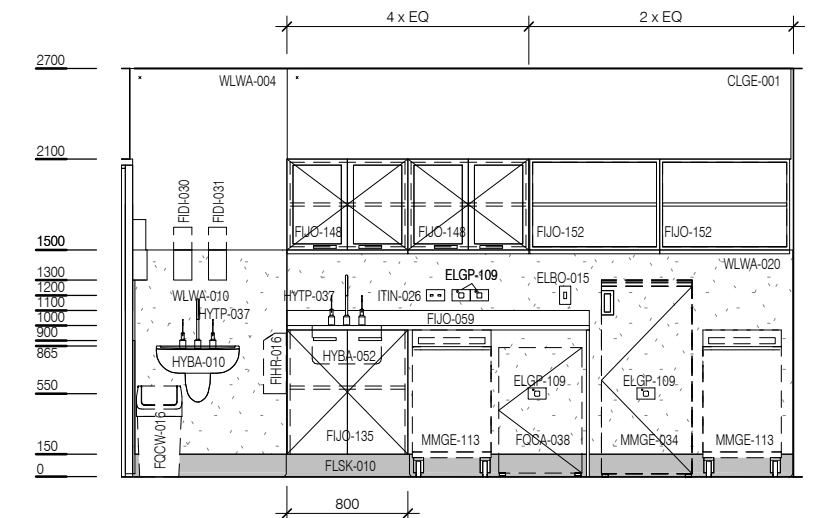
ELEVATION 1



ELEVATION 1



ELEVATION 3



ELEVATION 4

REV	DESCRIPTION	DATE
4	Coding and naming updated	20.03.2017

SCALE	RLS Room Code	REV
1 : 50 @ A3	CLUR-12	4