

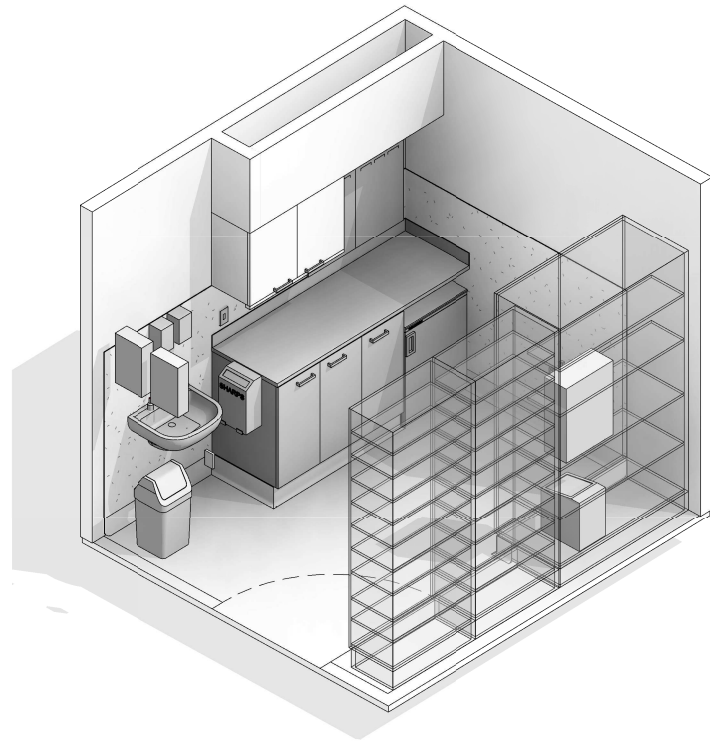
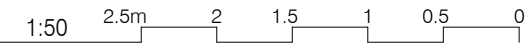
AUSTRALASIAN HFG STANDARD COMPONENTS

Room Layout Sheet

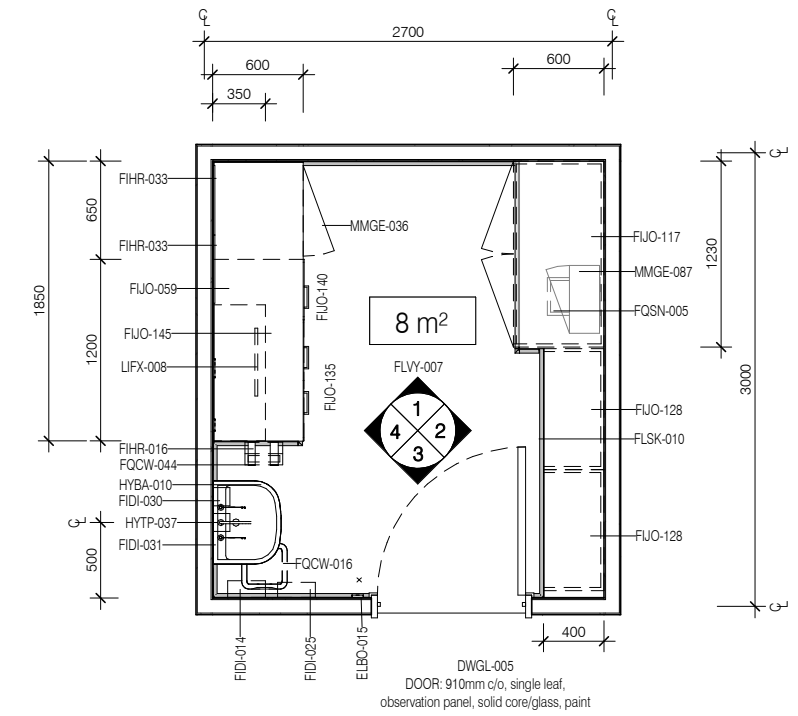
RLS Room Code: **CLUR-8**

Room Name:

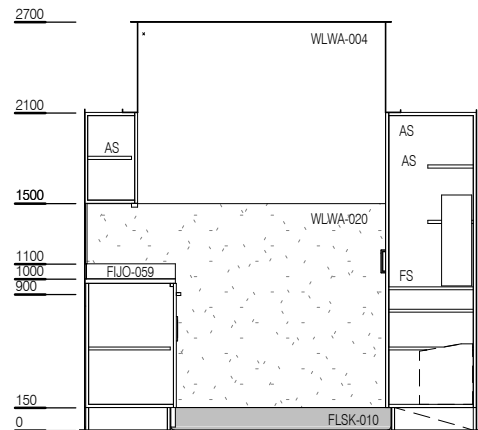
CLEAN UTILITY/ MEDICATION ROOM - SUB, 8m²



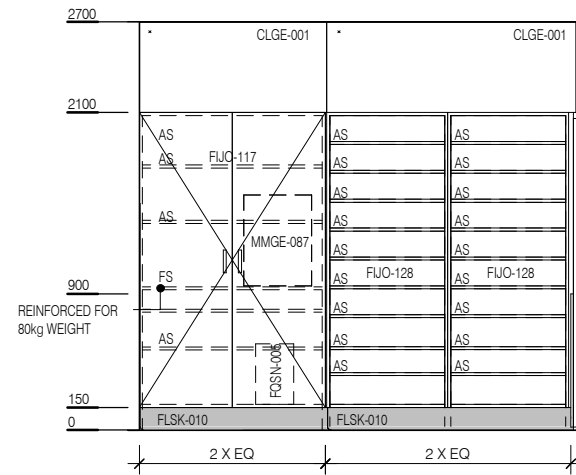
CODE	DESCRIPTION
CLGE-001	CEILING: plasterboard, bulkhead, paint
DWPR-006	DOOR PROTECTION: protection plate, to 900 AFFL, PVC, prefinished
DWPR-010	DOOR PROTECTION: to door frame, PVC, prefinished
ELBO-015	SWITCH: light, single
ELGP-109	GPO: single, wall mounted
FIDI-014	DISPENSER: disposable glove
FIDI-025	DISPENSER: paper/hand towel
FIDI-030	DISPENSER: soap
FIDI-031	DISPENSER: soap antiseptic
FIHR-016	BRACKET: for sharps bin
FIHR-033	PANEL: for storage bins, wall mount
FUJO-059	BENCH TOP: 600D, joinery under, laminate finish
FUJO-117	CUPBOARD: tall, double door, adj shelves, lockable
FUJO-128	CUPBOARD: tall, shelf unit, pharmacy shelves
FUJO-135	CUPBOARD: underbench, double door, adj shelves
FUJO-140	CUPBOARD: underbench, single door, adj shelves
FUJO-145	CUPBOARD: wall mount, double door, adj shelves, lockable
FLSK-010	SKIRTING: vinyl, floor vinyl coved, 150H, prefinished
FLVY-007	FLOOR FINISH: vinyl, seamless, coved, standard slip resistant
FQCW-016	BIN: waste, general, 20L
FQCW-044	BIN: waste, sharps, wall mounted
FOSN-005	BIN: pharmacy returns
HYBA-010	BASIN: handwash, Type B
HYTP-037	TAPWARE: mixer, elbow levers
ITIN-026	OUTLET: data, double RJ45, wall mounted
LIFX-008	LIGHT: task light, built in
MMGE-036	FRIDGE: drugs, underbench
MMGE-087	SAFE: dangerous drugs, medium
WLWA-004	WALL FINISH: paint, acrylic, washable
WLWA-010	WALL FINISH: splashback, vinyl
WLWA-020	WALL FINISH: vinyl, to 1500 AFFL



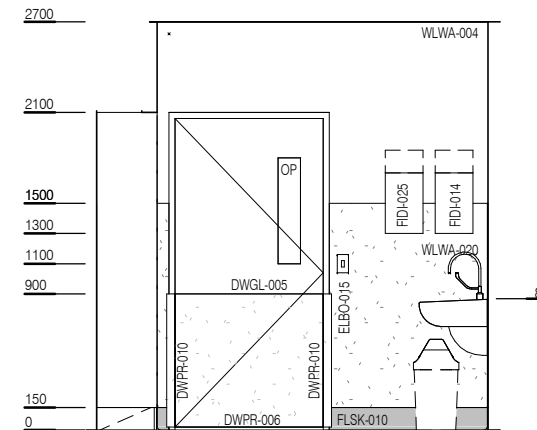
PLAN



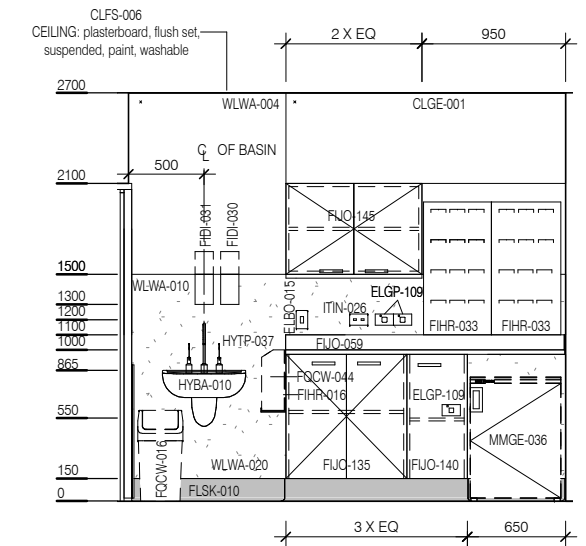
ELEVATION 1



ELEVATION 2



ELEVATION 3



ELEVATION 4



REV	DESCRIPTION	DATE
5	Coding and naming updated	20.03.2017

FOR GUIDANCE

SCALE	RLS Room Code	REV
1 : 50 @ A3	CLUR-8	5