

AUSTRALASIAN HFG STANDARD COMPONENTS

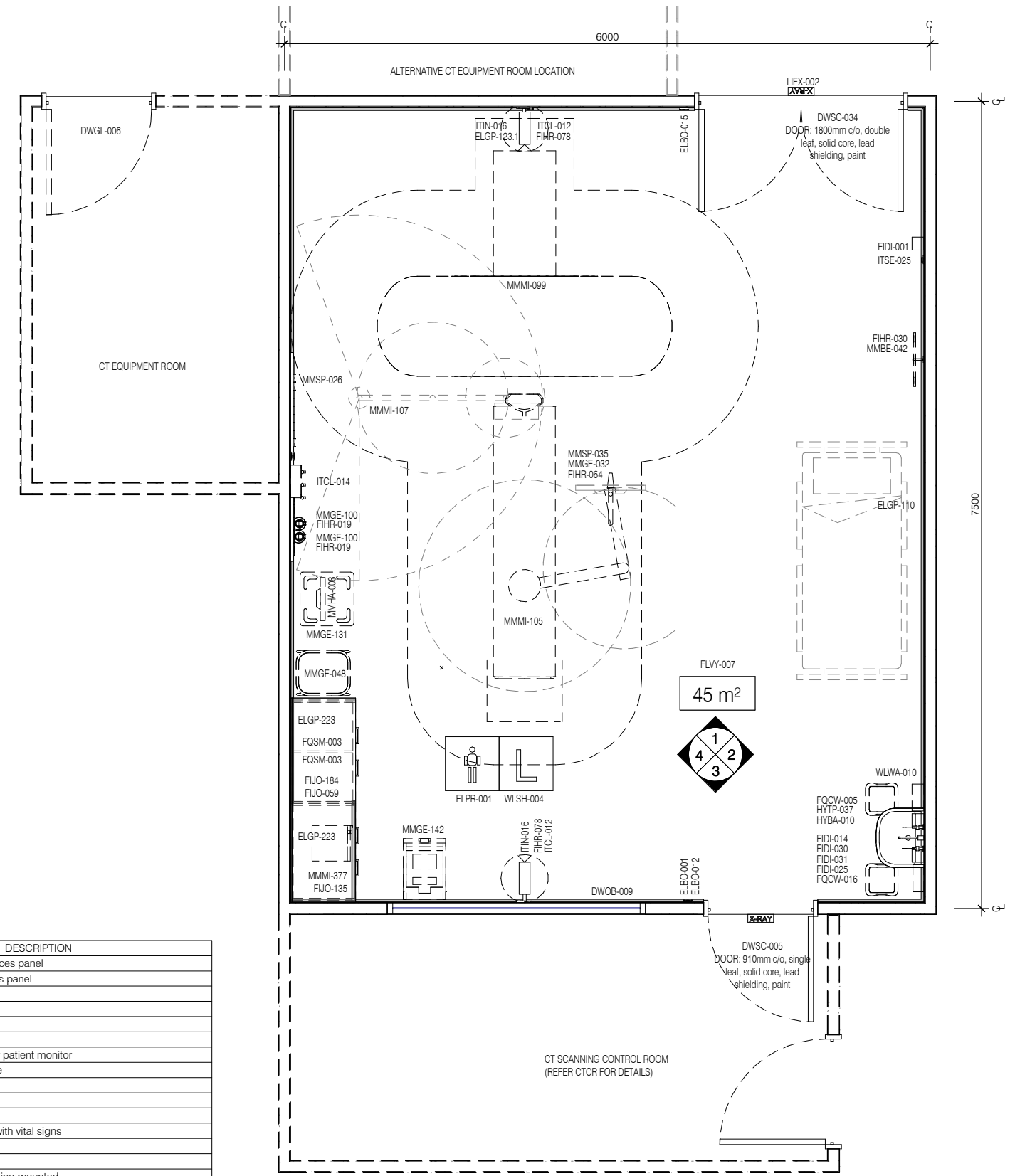
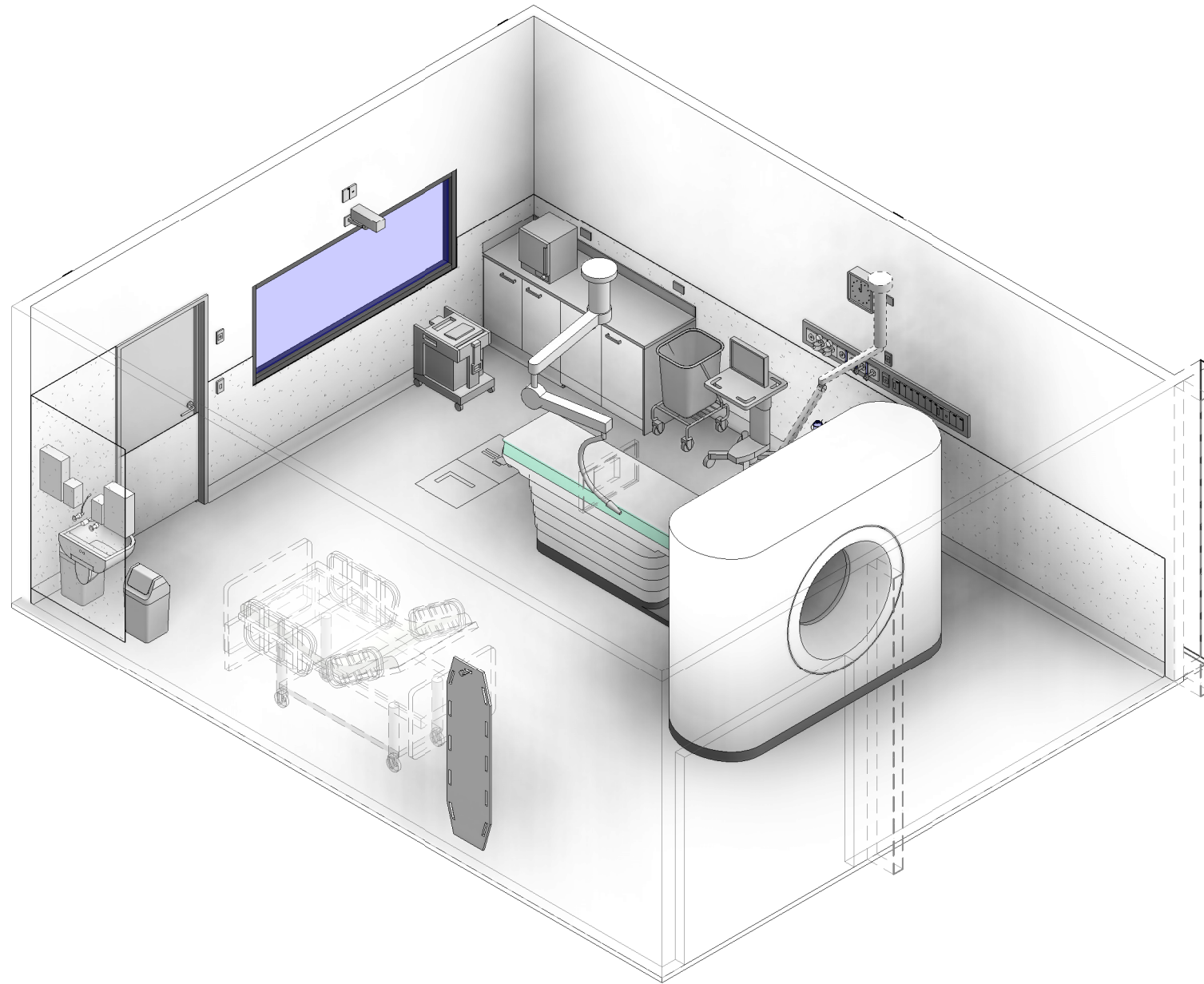
Room Layout Sheet

RLS Room Code: CTIR

1:50 2.5m 2 1.5 1 0.5 0

Room Name:

CT IMAGING ROOM



PLAN

CODE	DESCRIPTION
DWOB-009	OBSERVATION: internal window, lead glass, clear
DWPR-005	DOOR PROTECTION: protection plate to 900 AFFL
ELBO-001	BUTTON: emergency stop
ELBO-012	SWITCH: light, dimmer
ELBO-015	SWITCH: light, single
ELGP-109	GPO: single, wall mounted
ELGP-110	GPO: single, wall mounted, cleaner
ELGP-122.1	GPO: emergency power, single, on services panel (V)
ELGP-123	GPO: emergency power, single, wall mounted
ELGP-123.1	GPO: emergency power, single, wall mounted (V)
ELGP-133	GPO: UPS, single, on services panel
ELGP-223	GPO: emergency power, double, wall mounted
ELPR-001	BODY PROTECTED ELECTRICAL AREA
ELPR-006	RCD: residual current device
ELPR-007	UPS: status indicator
FIDI-001	DISPENSER: alcohol based hand rub
FIDI-014	DISPENSER: disposable glove
FIDI-025	DISPENSER: paper/hand towel
FIDI-030	DISPENSER: soap
FIDI-031	DISPENSER: soap antiseptic
FIHR-019	BRACKET: for suction bottle
FIHR-030	HOOK: equipment, on mounting plate

CODE	DESCRIPTION
FIHR-064	BRACKET: for display screen, arm mounted, rotating
FIHR-078	BRACKET: for observation camera, wall mounted
FUJO-059	BENCH TOP: 600D, joinery under, laminate finish
FUJO-135	CUPBOARD: underbench, double door, adj shelves
FUJO-184	CUPBOARD: underbench, double door, no shelves, no toeplate, lockable
FLSK-010	SKIRTING: vinyl, floor vinyl coved, 150H, prefinished
FLVY-007	FLOOR FINISH: vinyl, seamless, coved, standard slip resistant
FQCW-005	BIN: waste, clinical, 20L
FQCW-016	BIN: waste, general, 20L
FQSM-003	PEDESTAL: mobile, wire basket unit, 840H
HYBA-010	BASIN: handwash, Type B
HYTP-037	TAPWARE: mixer, elbow levers
ITCL-004	BUTTON: nurse call, emergency
ITCL-008	BUTTON: nurse call, staff assist
ITCL-012	CAMERA: observation
ITCL-014	CLOCK: analogue, electric
ITIN-016	OUTLET: data, single RJ45, wall mounted
ITSE-025	DOOR RELEASE: access control, remote activation
LIFY-002	LIGHT: illuminated sign, "X-Ray in Use"
MGAS-022	OUTLET: medical air (MA), on services panel
MGAS-032	OUTLET: nitrous oxide (N2O), on services panel
MGAS-042	OUTLET: oxygen (O2), on services panel

CODE	DESCRIPTION
MGAS-053	OUTLET: scavenge, on services panel
MGAS-062	OUTLET: suction, on services panel
MGFP-002	FLOWMETER: medical air
MGFP-004	FLOWMETER: oxygen
MMBE-042	SLIDE: patient
MMGE-002	ADAPTER: suction
MMGE-032	DISPLAY SCREEN: slave, for patient monitor
MMGE-048	LINEN CARRIER: dirty, single
MMGE-100	SUCTION BOTTLE
MMGE-131	TROLLEY: monitor
MMGE-142	TROLLEY: sharps bin
MMHA-008	MONITOR: patient, cardiac with vital signs
MMMI-099	DEVICE: imaging, CT
MMMI-105	TABLE: patient, fixed, CT
MMMI-107	INJECTOR: contrast, CT, ceiling mounted
MMMI-377	WARMER: contrast
MMSP-026	SERVICES PANEL: wall mounted
MMSP-035	PENDANT: single, dual arm, display screen
WLSH-004	SHIELDING: lead lining
WLWA-004	WALL FINISH: paint, acrylic, washable
WLWA-010	WALL FINISH: splashback, vinyl
WLWA-025	WALL FINISH: vinyl, to 1200 AFFL



REV	DESCRIPTION	DATE
1	First Issue	29.05.2019

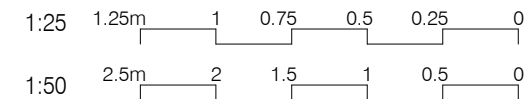
FOR GUIDANCE

SCALE	RLS Room Code	REV
1 : 50 @ A3	CTIR	1

AUSTRALASIAN HFG STANDARD COMPONENTS

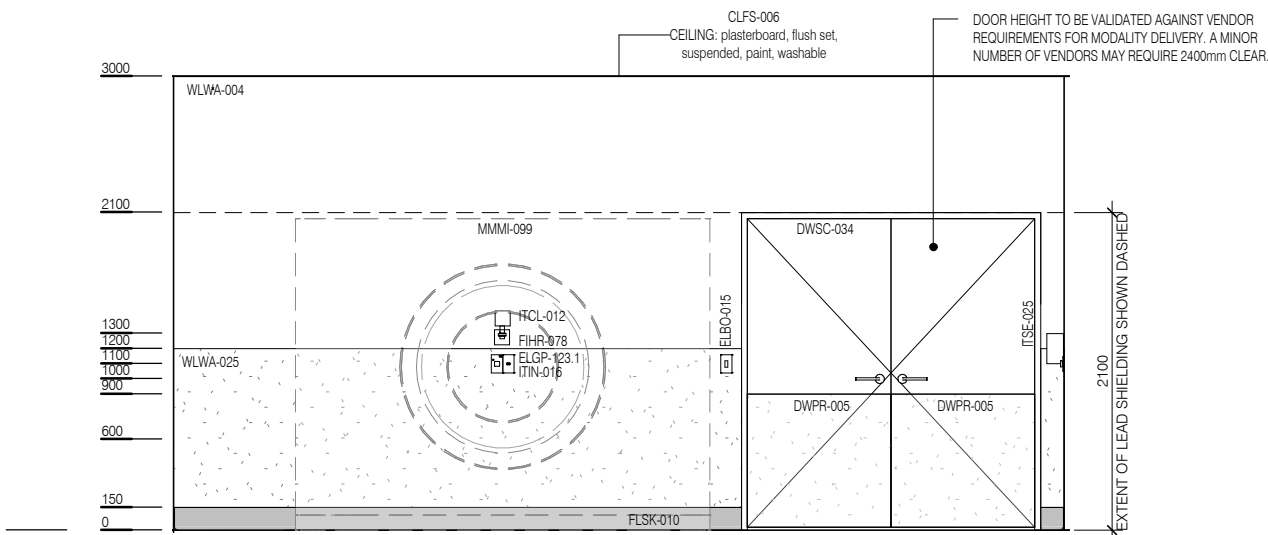
Room Layout Sheet

RLS Room Code: **CTIR**

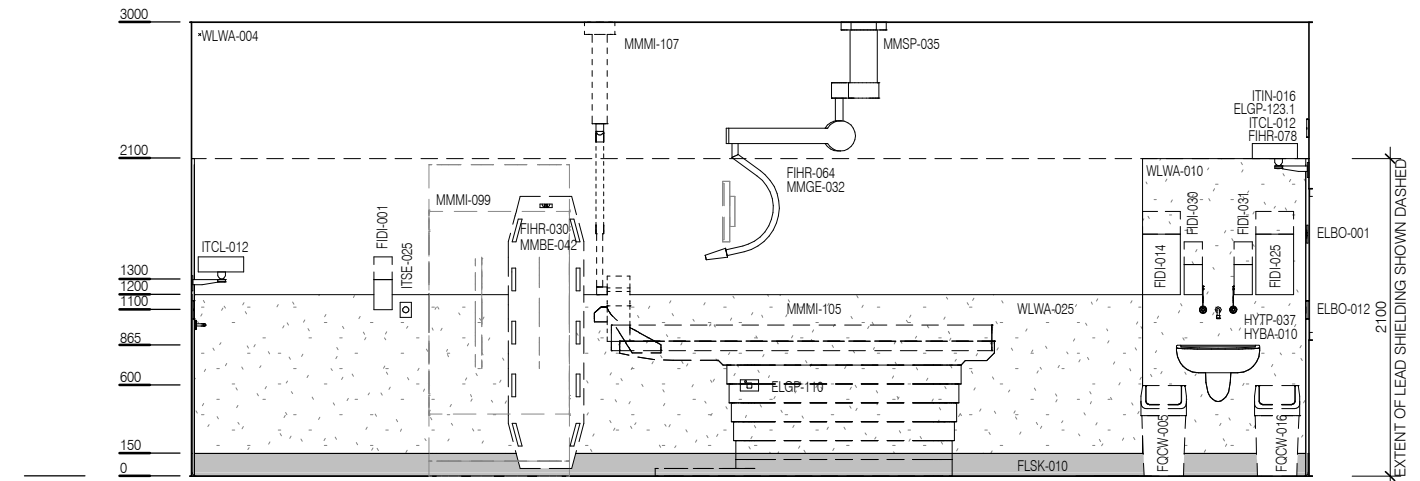


Room Name:

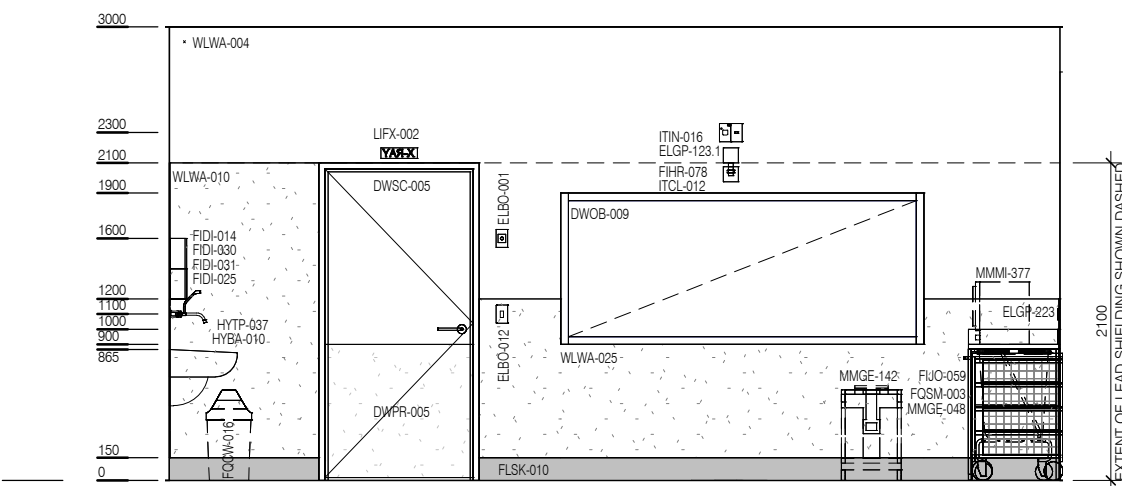
CT IMAGING ROOM



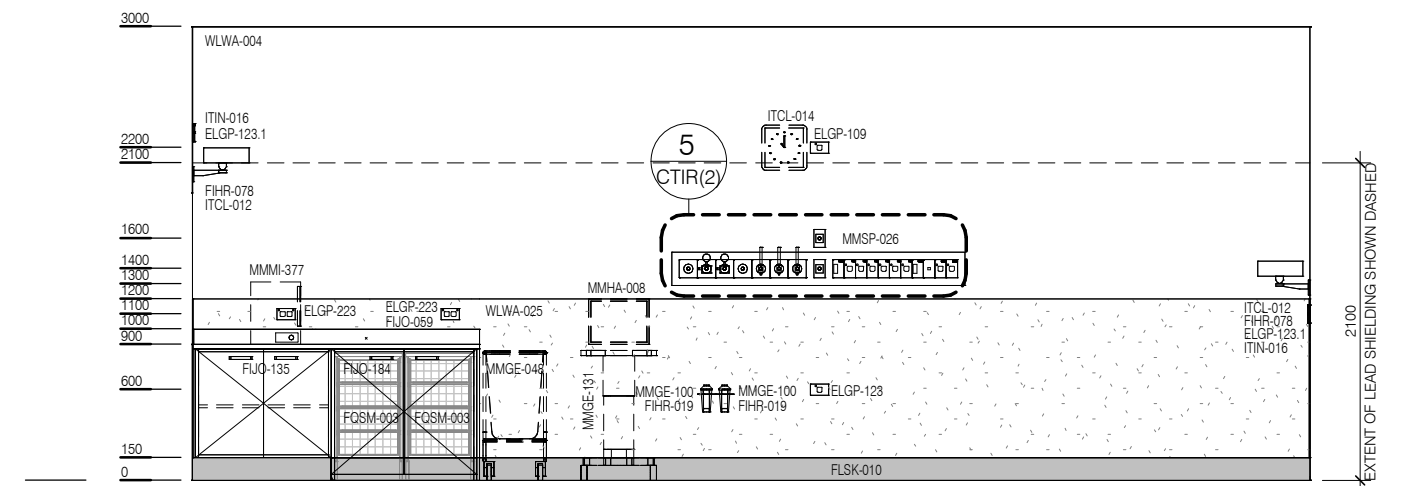
ELEVATION 1



ELEVATION 2



ELEVATION 3

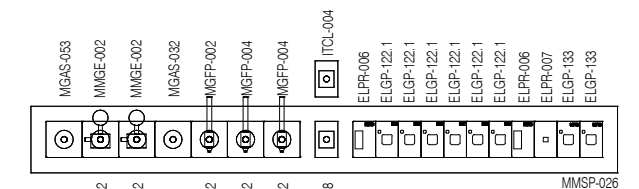


ELEVATION 4

CODE	DESCRIPTION
DWOB-009	OBSERVATION: internal window, lead glass, clear
DWPR-005	DOOR PROTECTION: protection plate to 900 AFFL
ELBO-001	BUTTON: emergency stop
ELBO-012	SWITCH: light, dimmer
ELBO-015	SWITCH: light, single
ELGP-109	GPO: single, wall mounted
ELGP-110	GPO: single, wall mounted, cleaner
ELGP-122.1	GPO: emergency power, single, on services panel (V)
ELGP-123	GPO: emergency power, single, wall mounted
ELGP-123.1	GPO: emergency power, single, wall mounted (V)
ELGP-133	GPO: UPS, single, on services panel
ELGP-223	GPO: emergency power, double, wall mounted
ELPR-001	BODY PROTECTED ELECTRICAL AREA
ELPR-006	RCD: residual current device
ELPR-007	UPS: status indicator
FIDI-001	DISPENSER: alcohol based hand rub
FIDI-014	DISPENSER: disposable glove
FIDI-025	DISPENSER: paper/hand towel
FIDI-030	DISPENSER: soap
FIDI-031	DISPENSER: soap antiseptic
FIHR-019	BRACKET: for suction bottle
FIHR-030	HOOK: equipment, on mounting plate

CODE	DESCRIPTION
FIHR-064	BRACKET: for display screen, arm mounted, rotating
FIHR-078	BRACKET: for observation camera, wall mounted
FJO-059	BENCH TOP: 600D, joinery under, laminate finish
FJO-135	CUPBOARD: underbench, double door, adj shelves
FJO-184	CUPBOARD: underbench, double door, no shelves, no toeplate, lockable
FLSK-010	SKIRTING: vinyl, floor vinyl coved, 150H, prefinished
FLVY-007	FLOOR FINISH: vinyl, seamless, coved, standard slip resistant
FQCW-005	BIN: waste, clinical, 20L
FQCW-016	BIN: waste, general, 20L
FQSM-003	PEDESTAL: mobile, wire basket unit, 840H
HYBA-010	BASIN: handwash, Type B
HYTP-037	TAPWARE: mixer, elbow levers
ITCL-004	BUTTON: nurse call, emergency
ITCL-008	BUTTON: nurse call, staff assist
ITCL-012	CAMERA: observation
ITCL-014	CLOCK: analogue, electric
ITIN-016	OUTLET: data, single RJ45, wall mounted
ITSE-025	DOOR RELEASE: access control, remote activation
LIFX-002	LIGHT: illuminated sign, "X-Ray in Use"
MGAS-022	OUTLET: medical air (MA), on services panel
MGAS-032	OUTLET: nitrous oxide (N2O), on services panel
MGAS-042	OUTLET: oxygen (O2), on services panel

CODE	DESCRIPTION
MGAS-053	OUTLET: scavenge, on services panel
MGAS-062	OUTLET: suction, on services panel
MGFP-002	FLOWMETER: medical air
MGFP-004	FLOWMETER: oxygen
MMBE-042	SLIDE: patient
MMGE-002	ADAPTER: suction
MMGE-032	DISPLAY SCREEN: slave, for patient monitor
MMGE-048	LINEN CARRIER: dirty, single
MMGE-100	SUCTION BOTTLE
MMGE-131	TROLLEY: monitor
MMGE-142	TROLLEY: sharps bin
MMHA-008	MONITOR: patient, cardiac with vital signs
MMMI-099	DEVICE: imaging, CT
MMMI-105	TABLE: patient, fixed, CT
MMMI-107	INJECTOR: contrast, CT, ceiling mounted
MMMI-377	WARMER: contrast
MMSP-026	SERVICES PANEL: wall mounted
MMSP-035	PENDANT: single, dual arm, display screen
WLWA-004	WALL FINISH: paint, acrylic, washable
WLWA-010	WALL FINISH: splashback, vinyl
WLWA-025	WALL FINISH: vinyl, to 1200 AFFL



ELEVATION 5 (1 : 25 @ A3)



REV	DESCRIPTION	DATE
1	First Issue	29.05.2019

FOR GUIDANCE

SCALE	RLS Room Code	REV
1 : 50 @ A3	CTIR	1