

# AUSTRALASIAN HFG STANDARD COMPONENTS

Room Layout Sheet

RLS Room Code: **CTPR**

1:50 2.5m 2 1.5 1 0.5 0

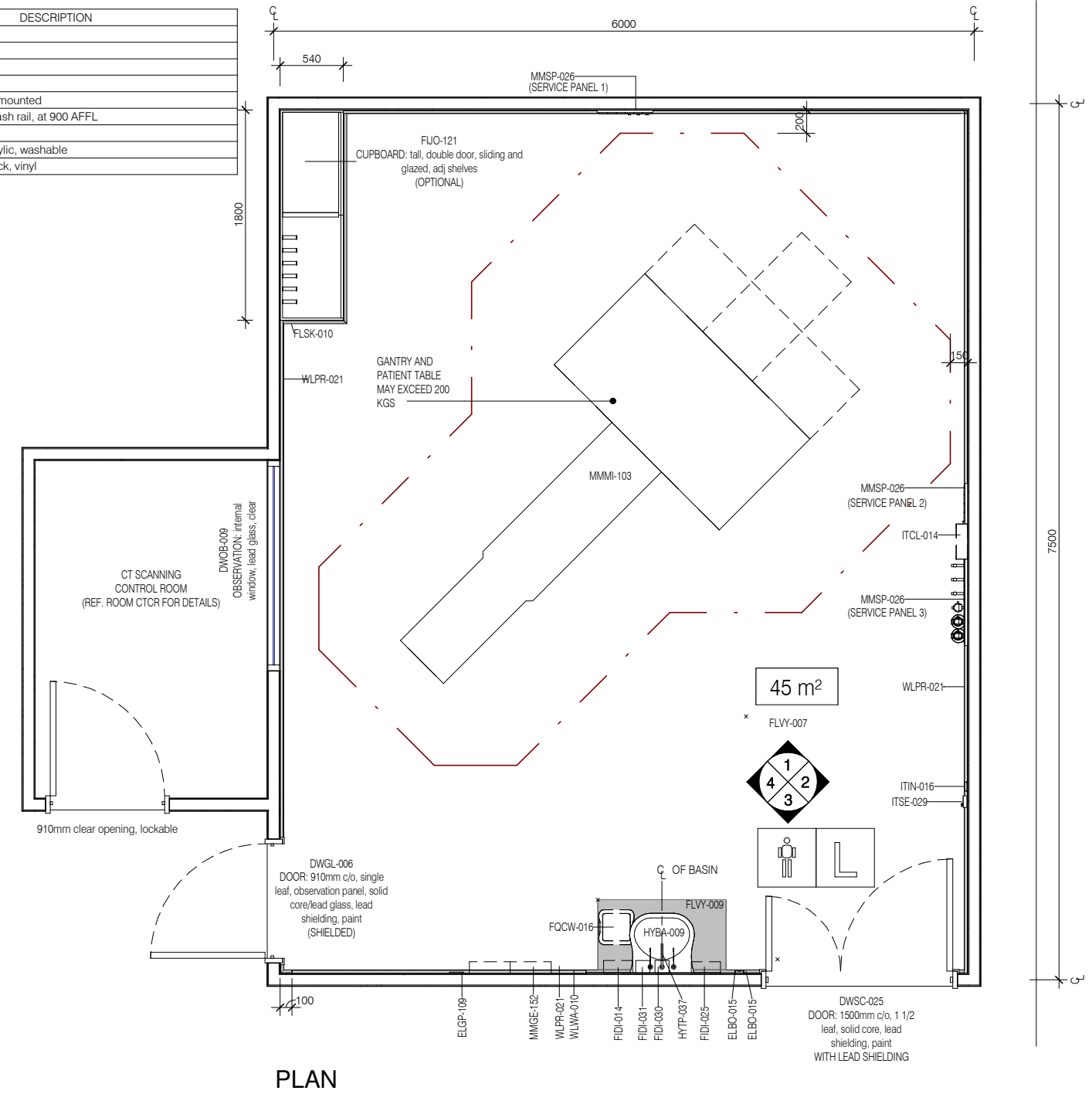
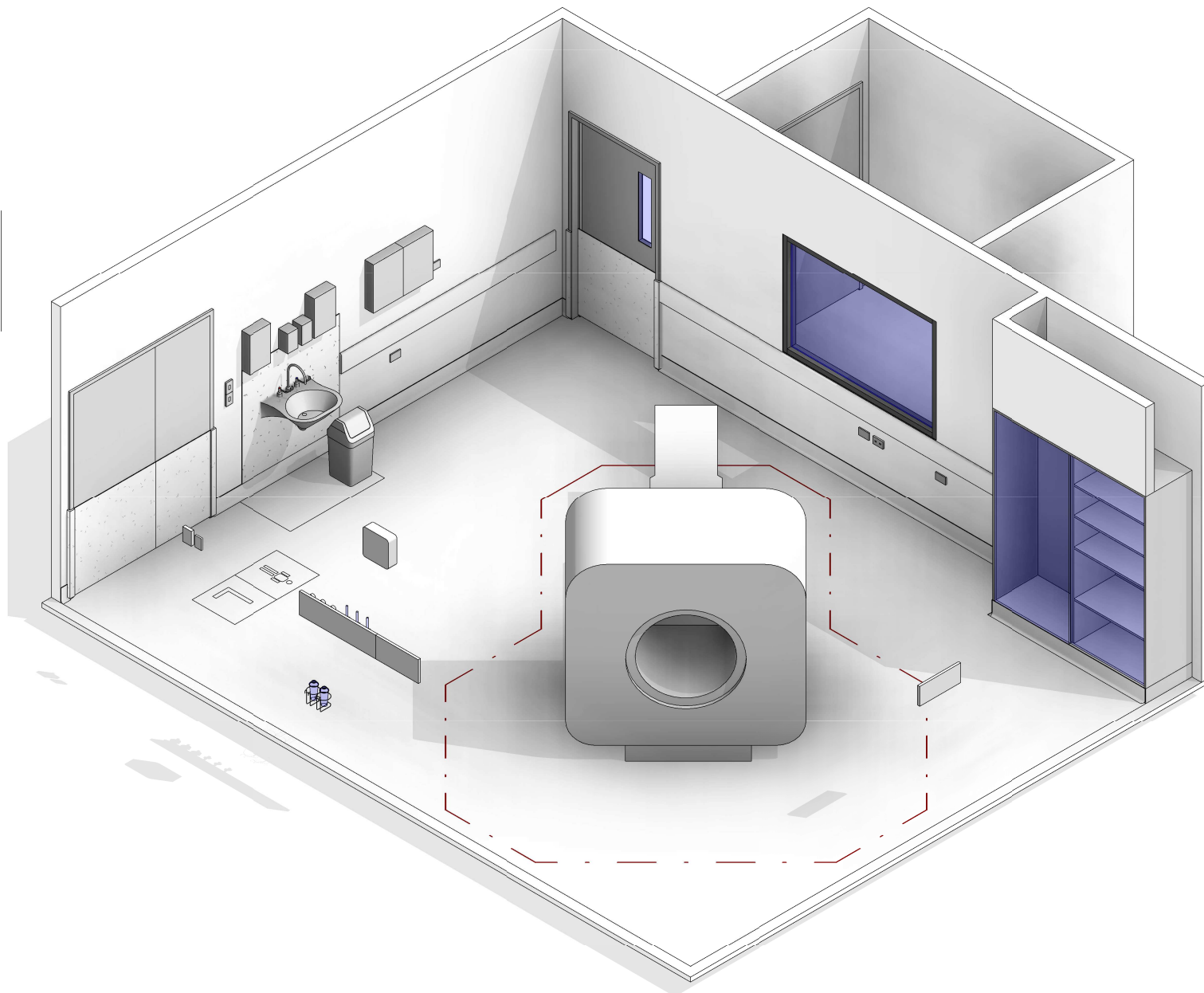
Room Name:

**CT SCANNING - PROCEDURE ROOM**

CODE	DESCRIPTION
CLGE-001	CEILING: plasterboard, bulkhead, paint
DWOB-009	OBSERVATION: internal window, lead glass, clear
DWPR-006	DOOR PROTECTION: protection plate, to 900 AFFL, PVC, prefinished
DWPR-010	DOOR PROTECTION: to door frame, PVC, prefinished
ELBO-015	SWITCH: light, single
ELGP-109	GPO: single, wall mounted
ELGP-110	GPO: single, wall mounted, cleaner
ELGP-122.1	GPO: emergency power, single, on services panel (V)
ELGP-206	GPO: double, on services panel, RCD protected
ELGP-223	GPO: emergency power, double, wall mounted
ELPR-001	BODY PROTECTED ELECTRICAL AREA
FIDI-014	DISPENSER: disposable glove
FIDI-025	DISPENSER: paper/hand towel
FIDI-030	DISPENSER: soap
FIDI-031	DISPENSER: soap antiseptic
FIHR-019	BRACKET: for suction bottle
FLO-121	CUPBOARD: tall, double door, sliding and glazed, adj shelves
FLSK-010	SKIRTING: vinyl, floor vinyl coved, 150H, prefinished
FLVY-007	FLOOR FINISH: vinyl, seamless, coved, standard slip resistant

CODE	DESCRIPTION
FLVY-009	FLOOR FINISH: vinyl, seamless, coved, wet area, non-slip
FOCW-016	BIN: waste, general, 20L
HYBA-009	BASIN: handwash, Type A, scrub
HYTP-037	TAPWARE: mixer, elbow levers
ITCL-004	BUTTON: nurse call, emergency
ITCL-008	BUTTON: nurse call, staff assist
ITCL-009	BUTTON: nurse call, staff / nurse assist
ITCL-014	CLOCK: analogue, electric
ITIN-016	OUTLET: data, single RJ45, wall mounted
ITIN-025	OUTLET: data, double RJ45, on services panel
ITIN-026	OUTLET: data, double RJ45, wall mounted
ITSE-029	INTERCOM: audio, wall mount
MGAS-022	OUTLET: medical air (MA), on services panel
MGAS-032	OUTLET: nitrous oxide (N2O), on services panel
MGAS-042	OUTLET: oxygen (O2), on services panel
MGAS-053	OUTLET: scavenge, on services panel
MGAS-062	OUTLET: suction, on services panel
MGFP-002	FLOWMETER: medical air
MGFP-004	FLOWMETER: oxygen
MMGE-001	ADAPTER: scavenge

CODE	DESCRIPTION
MMGE-002	ADAPTER: suction
MMGE-100	SUCTION BOTTLE
MMGE-152	VIEWER: X-ray, 2 screen
MMMI-103	SYSTEM: imaging, CT
MMSP-026	SERVICES PANEL: wall mounted
WLPR-021	WALL PROTECTION: crash rail, at 900 AFFL
WLSH-004	SHIELDING: lead lining
WLWA-004	WALL FINISH: paint, acrylic, washable
WLWA-010	WALL FINISH: splashback, vinyl



REV	DESCRIPTION	DATE
3	Coding and naming updated	20.03.2017

FOR GUIDANCE

SCALE	RLS Room Code	REV
1 : 50 @ A3	CTPR	3

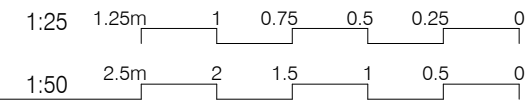
# AUSTRALASIAN HFG STANDARD COMPONENTS

Room Layout Sheet

RLS Room Code: **CTPR**

Room Name:

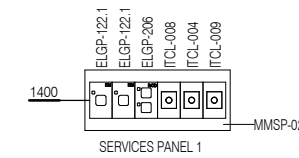
**CT SCANNING - PROCEDURE ROOM**



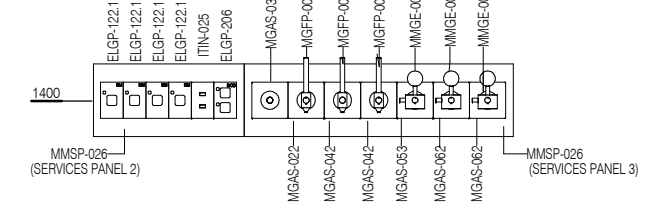
CODE	DESCRIPTION
CLGE-001	CEILING: plasterboard, bulkhead, paint
DWOB-009	OBSERVATION: internal window, lead glass, clear
DWPR-006	DOOR PROTECTION: protection plate, to 900 AFFL, PVC, prefinished
DWPR-010	DOOR PROTECTION: to door frame, PVC, prefinished
ELBO-015	SWITCH: light, single
ELGP-109	GPO: single, wall mounted
ELGP-110	GPO: single, wall mounted, cleaner
ELGP-122.1	GPO: emergency power, single, on services panel (V)
ELGP-206	GPO: double, on services panel, RCD protected
ELGP-223	GPO: emergency power, double, wall mounted
ELPR-001	BODY PROTECTED ELECTRICAL AREA
FIDI-014	DISPENSER: disposable glove
FIDI-025	DISPENSER: paper/hand towel
FIDI-030	DISPENSER: soap
FIDI-031	DISPENSER: soap antiseptic
FIHR-019	BRACKET: for suction bottle
FUO-121	CUPBOARD: tall, double door, sliding and glazed, adj shelves
FLSK-010	SKIRTING: vinyl, floor vinyl coved, 150H, prefinished
FLVY-007	FLOOR FINISH: vinyl, seamless, coved, standard slip resistant

CODE	DESCRIPTION
FLVY-009	FLOOR FINISH: vinyl, seamless, coved, wet area, non-slip
FQCW-016	BIN: waste, general, 20L
HYBA-009	BASIN: handwash, Type A, scrub
HYTP-037	TAPWARE: mixer, elbow levers
ITCL-004	BUTTON: nurse call, emergency
ITCL-008	BUTTON: nurse call, staff assist
ITCL-009	BUTTON: nurse call, staff / nurse assist
ITCL-014	CLOCK: analogue, electric
ITIN-016	OUTLET: data, single RJ45, wall mounted
ITIN-025	OUTLET: data, double RJ45, on services panel
ITIN-026	OUTLET: data, double RJ45, wall mounted
ITSE-029	INTERCOM: audio, wall mount
MGAS-022	OUTLET: medical air (MA), on services panel
MGAS-032	OUTLET: nitrous oxide (N2O), on services panel
MGAS-042	OUTLET: oxygen (O2), on services panel
MGAS-053	OUTLET: scavenge, on services panel
MGAS-062	OUTLET: suction, on services panel
MGFP-002	FLOWMETER: medical air
MGFP-004	FLOWMETER: oxygen
MMGE-001	ADAPTER: scavenge

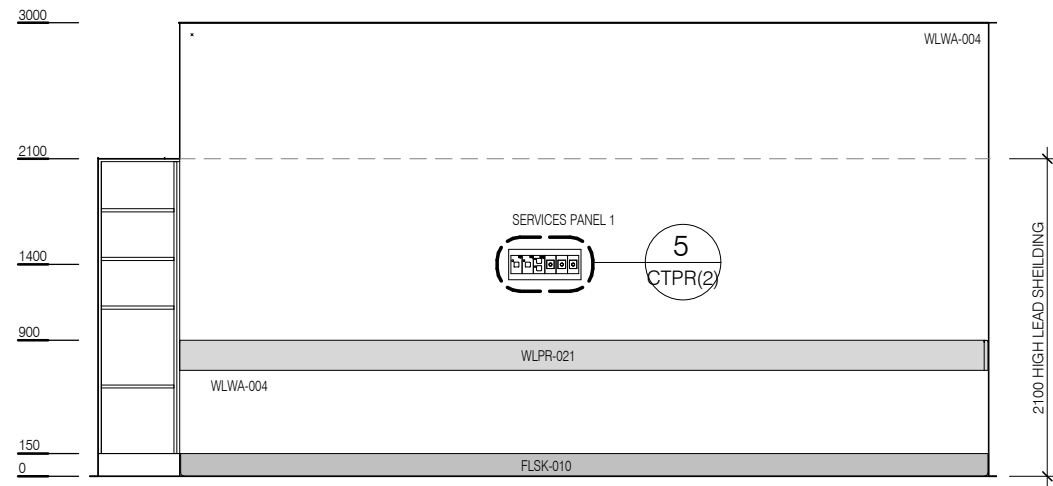
CODE	DESCRIPTION
MMGE-002	ADAPTER: suction
MMGE-100	SUCTION BOTTLE
MMGE-152	VIEWER: X-ray, 2 screen
MMMI-103	SYSTEM: imaging, CT
MMSP-026	SERVICES PANEL: wall mounted
WLPR-021	WALL PROTECTION: crash rail, at 900 AFFL
WLSH-004	SHIELDING: lead lining
WLWA-004	WALL FINISH: paint, acrylic, washable
WLWA-010	WALL FINISH: splashback, vinyl



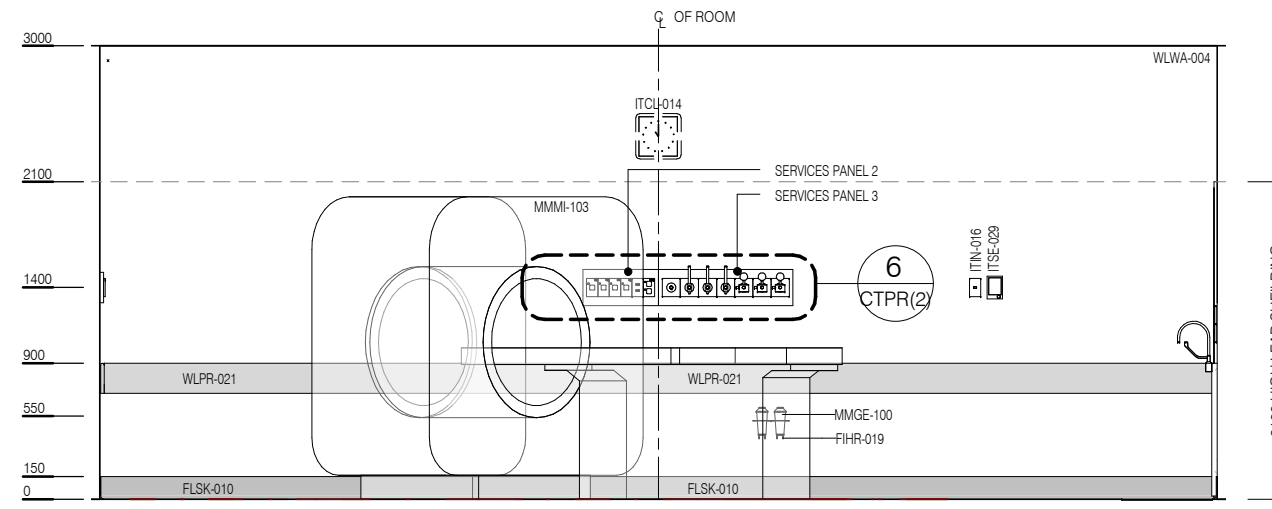
ELEVATION 5 (1 : 25 @ A3)



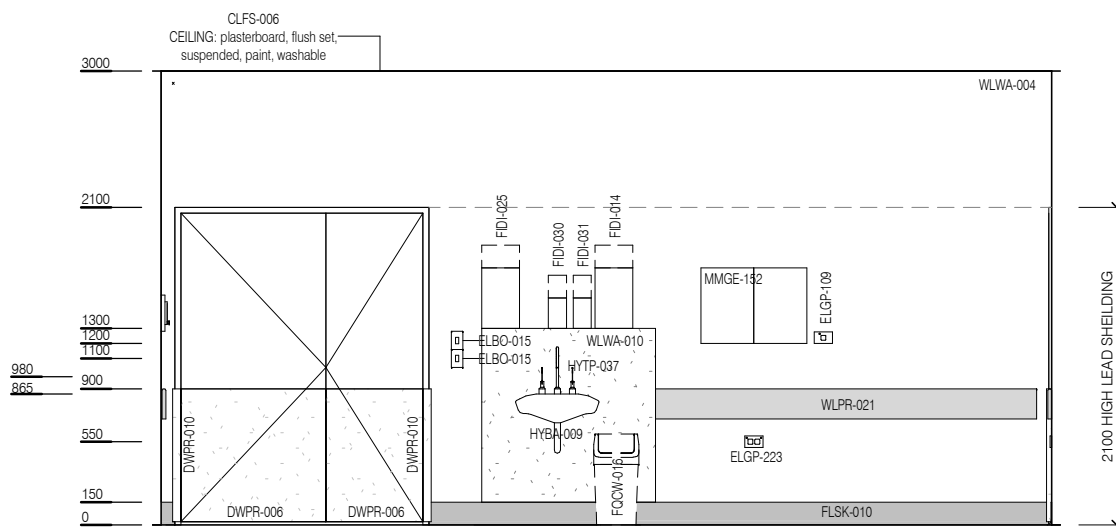
ELEVATION 6 (1 : 25 @ A3)



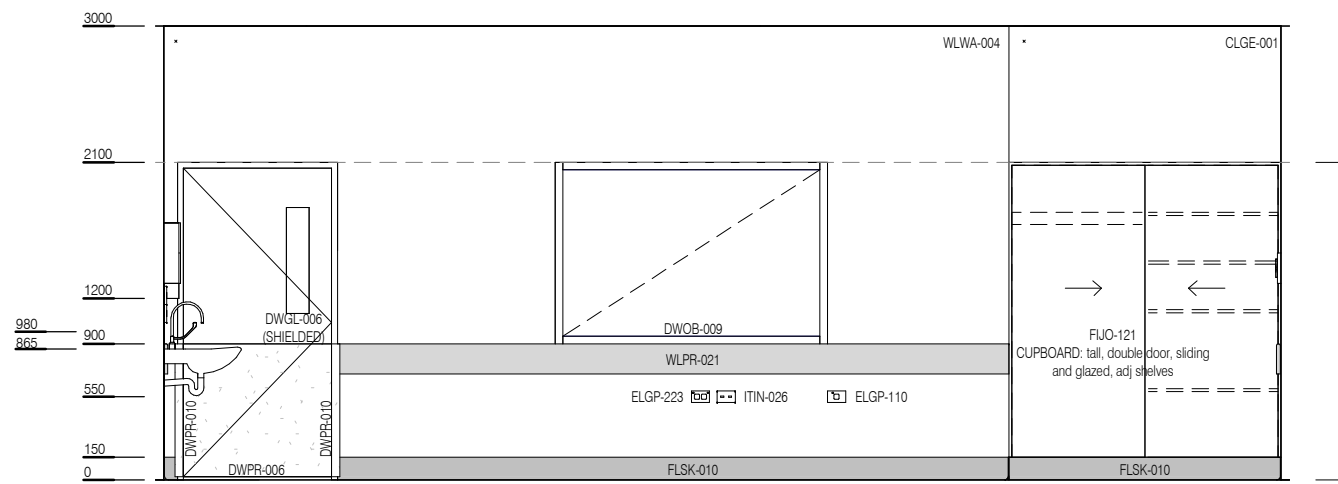
ELEVATION 1



ELEVATION 2



ELEVATION 3



ELEVATION 4



REV	DESCRIPTION	DATE
3	Coding and naming updated	20.03.2017

FOR GUIDANCE

SCALE	RLS Room Code	REV
1 : 50 @ A3	CTPR	3