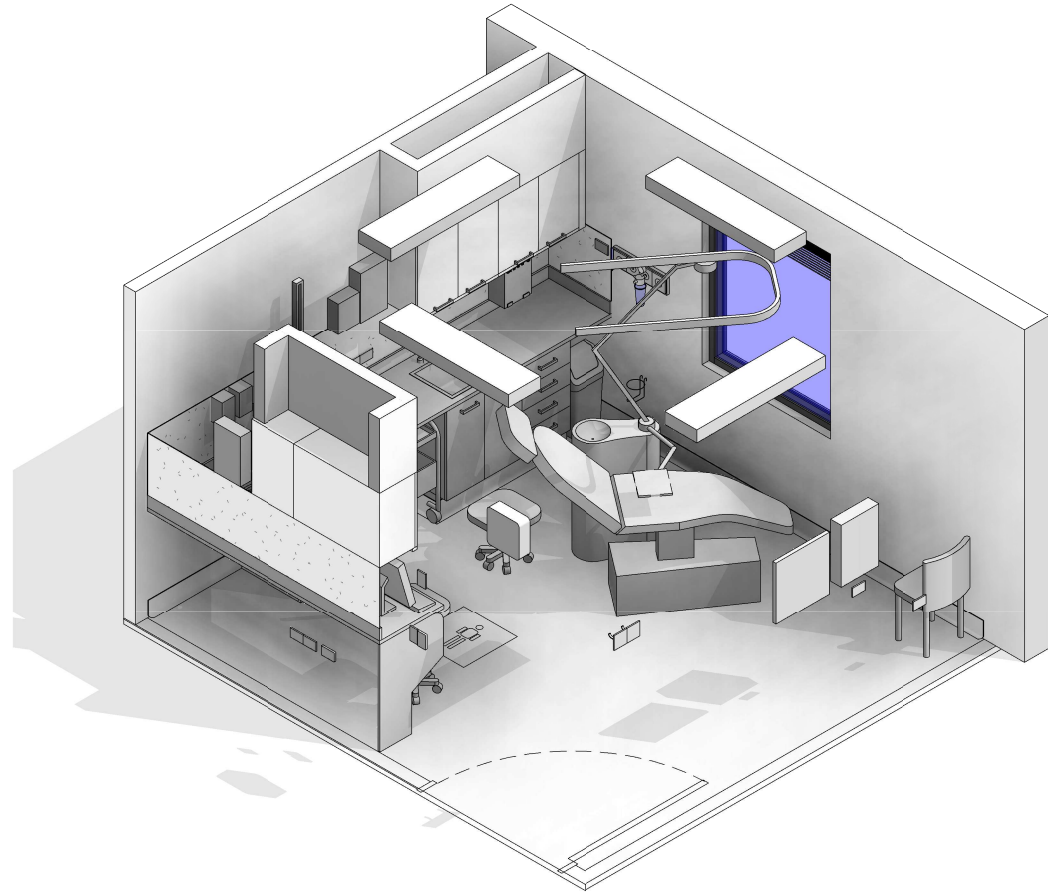


# AUSTRALASIAN HFG STANDARD COMPONENTS

Room Layout Sheet

RLS Room Code: **DENSR-16**

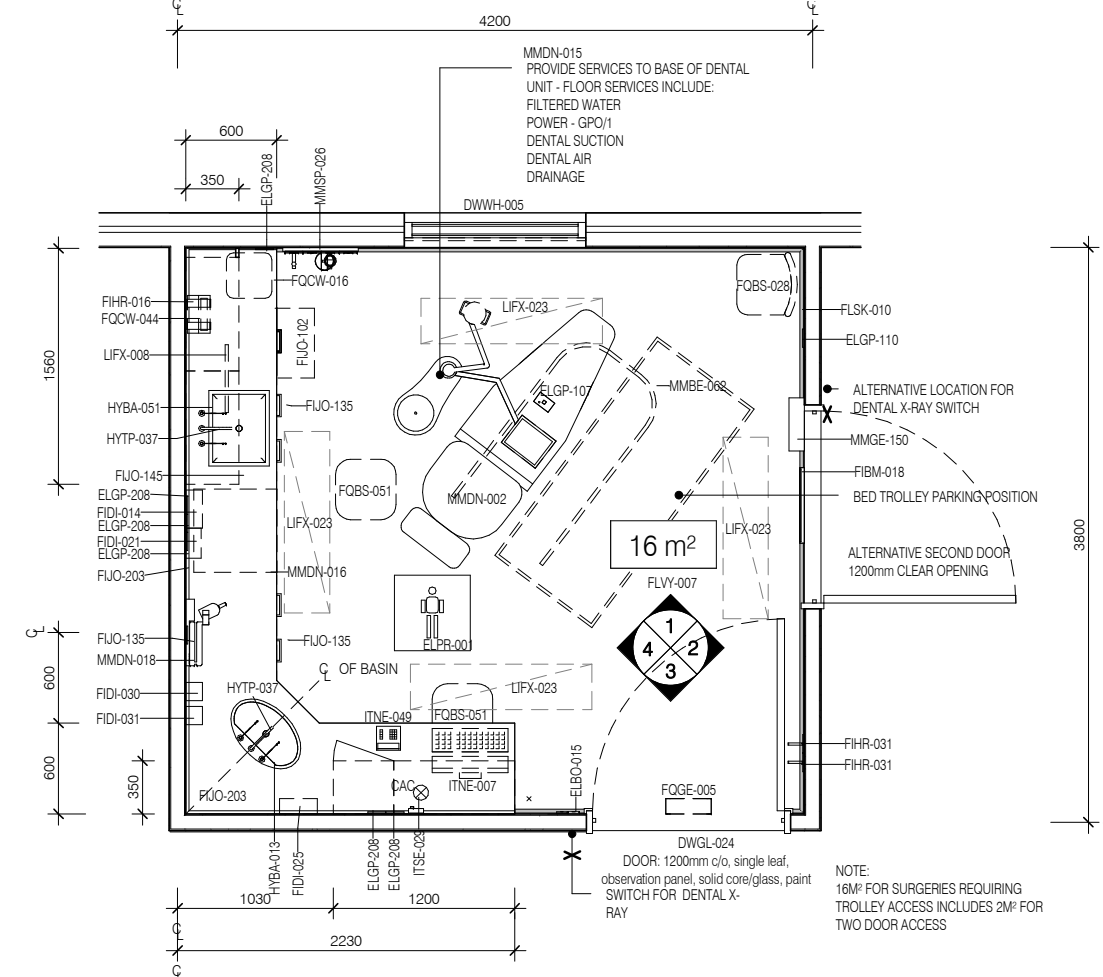
1:50 2.5m 2 1.5 1 0.5 0



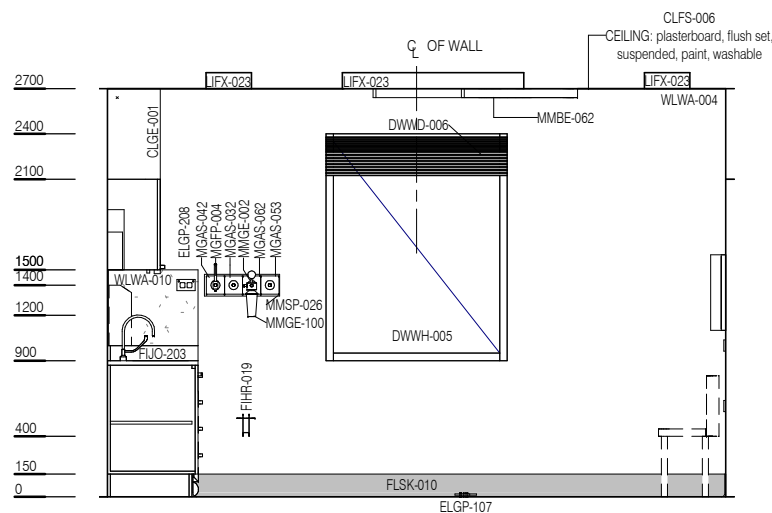
CODE	DESCRIPTION
CAC	Cable access cap
CLGE-001	CEILING: plasterboard, bulkhead, paint
DWPR-006	DOOR PROTECTION: protection plate, to 900 AFFL. PVC, prefinished
DWPR-010	DOOR PROTECTION: to door frame, PVC, prefinished
DWWD-006	BLIND: venetian
DWWH-005	WINDOW
ELBO-015	SWITCH: light, single
ELGP-107	GPO: single, special, for equipment, floor mounted
ELGP-109	GPO: single, wall mounted
ELGP-110	GPO: single, wall mounted, cleaner
ELGP-208	GPO: double, wall mounted
ELPR-001	BODY PROTECTED ELECTRICAL AREA
ELPR-003	ISOLATOR: electrical, 1ph+n
FIBM-018	WHITEBOARD: fixed
FIDI-014	DISPENSER: disposable glove
FIDI-021	DISPENSER: mask
FIDI-025	DISPENSER: paper/hand towel
FIDI-030	DISPENSER: soap
FIDI-031	DISPENSER: soap antiseptic
FIHR-016	BRACKET: for sharps bin
FIHR-019	BRACKET: for suction bottle
FIHR-031	HOOK: heavy duty
FUJO-102	CUPBOARD: drawer unit
FUJO-135	CUPBOARD: underbench, double door, adj shelves
FUJO-145	CUPBOARD: wall mount, double door, adj shelves, lockable
FUJO-157	CUPBOARD: wall mount, single door, adj shelves, lockable
FUJO-203	BENCH TOP: 600D, joinery under, laminate finish, corner unit
FLSK-010	SKIRTING: vinyl, floor vinyl coved, 150H, prefinished
FLVY-007	FLOOR FINISH: vinyl, seamless, coved, standard slip resistant
FOBS-028	CHAIR: visitor, clinical areas
FOBS-051	STOOL: mobile, adj height
FOCW-016	BIN: waste, general, 20L
FOCW-044	BIN: waste, sharps, wall mounted
FOGE-005	CLOCK: analogue, battery operated
HYBA-013	BASIN: vanity
HYBA-051	SINK: single
HYTP-037	TAPWARE: mixer, elbow levers
ITCL-004	BUTTON: nurse call, emergency
ITIN-026	OUTLET: data, double RJ45, wall mounted
ITNE-007	COMPUTER: desktop, with display screen
ITNE-049	TELEPHONE: handset, desktop
ITSE-029	INTERCOM: audio, wall mount
LIFX-008	LIGHT: task light, built in
LIFX-023	LIGHT: fluorescent light, recessed and sealed
MGAS-032	OUTLET: nitrous oxide (N2O), on services panel
MGAS-042	OUTLET: oxygen (O2), on services panel
MGAS-053	OUTLET: scavenge, on services panel
MGAS-062	OUTLET: suction, on services panel
MGFP-004	FLOWMETER: oxygen
MMBE-062	LIFTER: patient, ceiling mounted, track, U shape
MMDN-002	CHAIR: dental, electric
MMDN-015	SERVICE UNIT: dental, chair (spittoon)
MMDN-016	TROLLEY: dental
MMDN-018	X-RAY UNIT: dental, wall mounted
MMDN-019	LIGHT: dental
MMGE-002	ADAPTER: suction
MMGE-100	SUCTION BOTTLE
MMGE-150	VIEWER: X-ray, 1 screen
MMSP-026	SERVICES PANEL: wall mounted
WLPT-003	PARTITION: laminate
WLWA-004	WALL FINISH: paint, acrylic, washable
WLWA-010	WALL FINISH: splashback, vinyl

Room Name:

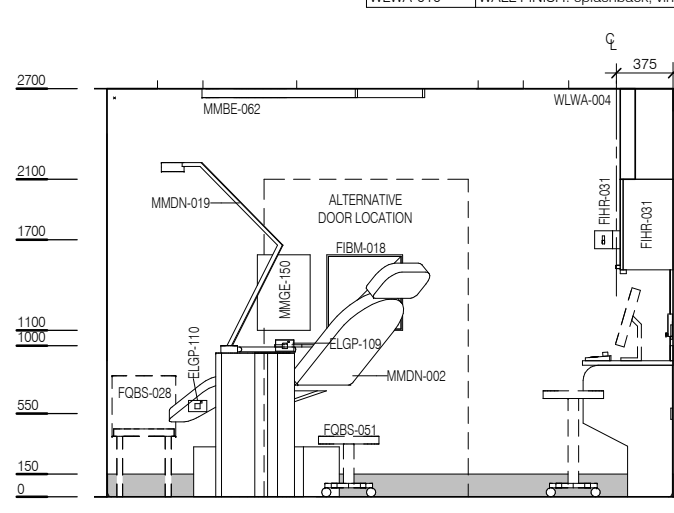
**DENTAL SURGERY, 16m<sup>2</sup>**



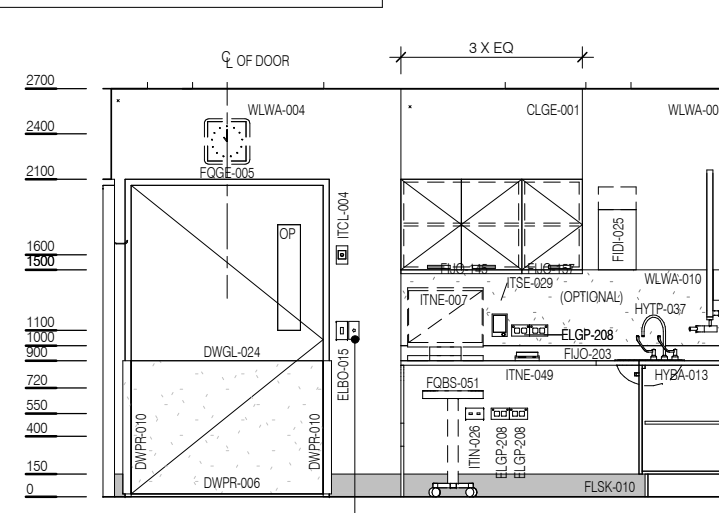
PLAN



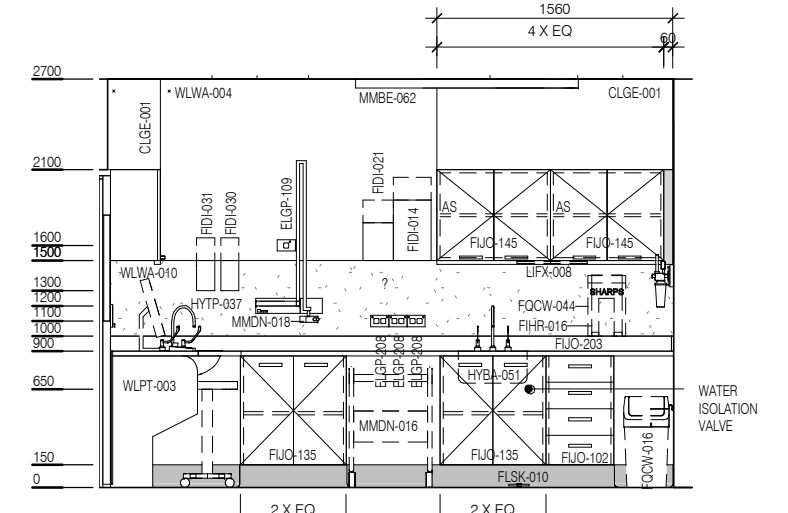
ELEVATION 1



ELEVATION 2



ELEVATION 3



ELEVATION 4



REV	DESCRIPTION	DATE
3	Coding and naming updated	20.03.2017

FOR GUIDANCE

SCALE	RLS Room Code	REV
1 : 50 @ A3	DENSR-16	3