

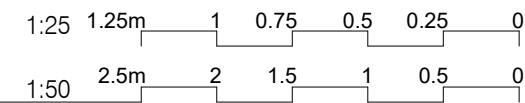
AUSTRALASIAN HFG STANDARD COMPONENTS

Room Layout Sheet

RLS Room Code: **DENSR-1**

Room Name:

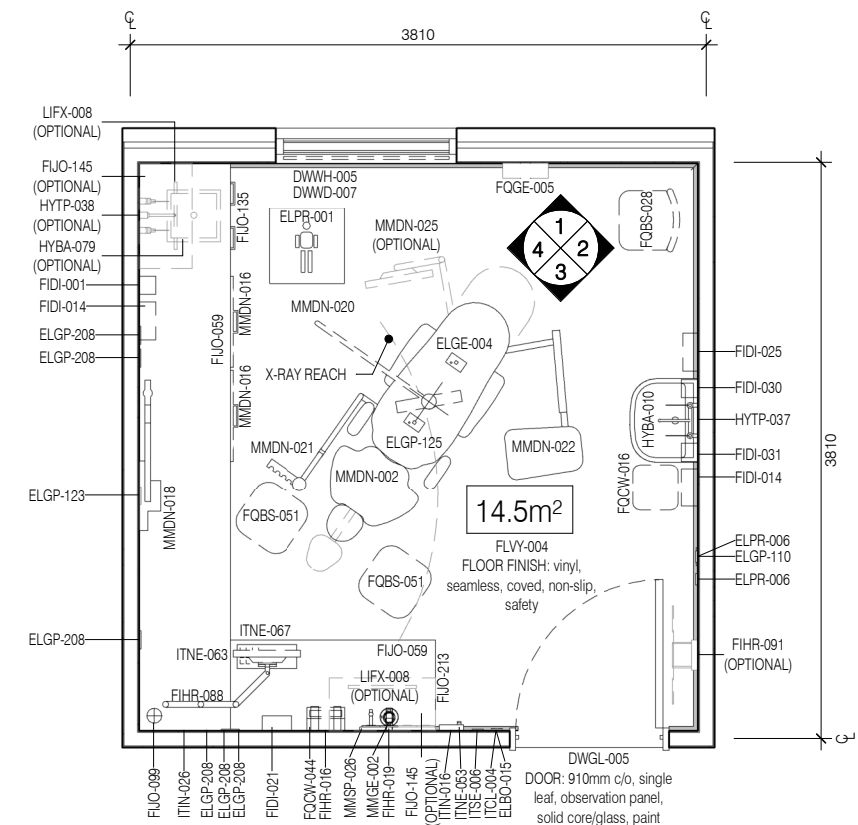
DENTAL SURGERY, TYPE 1



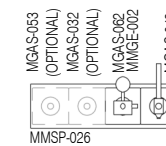
CODE	DESCRIPTION
DWPR-005	DOOR PROTECTION: protection plate to 900 AFFL
DWWD-007	BLIND: venetian, integral
DWWH-005	WINDOW
ELBO-015	SWITCH: light, single
ELGE-004	DIRECT CONNECTION: power, emergency
ELGP-110	GPO: single, wall mounted, cleaner
ELGP-123	GPO: emergency power, single, wall mounted
ELGP-125	GPO: emergency power, single, ceiling mounted
ELGP-208	GPO: double, wall mounted
ELPR-001	BODY PROTECTED ELECTRICAL AREA
ELPR-006	RCD: residual current device
FIDI-001	DISPENSER: alcohol based hand rub
FIDI-014	DISPENSER: disposable glove
FIDI-021	DISPENSER: mask
FIDI-025	DISPENSER: paper/hand towel
FIDI-030	DISPENSER: soap
FIDI-031	DISPENSER: soap antiseptic
FIHR-016	BRACKET: for sharps bin
FIHR-019	BRACKET: for suction bottle
FIHR-088	BRACKET: for monitor, desk mounted, articulated, adj height
FIHR-091	RACK: lead apron, single
FJO-059	BENCH TOP: 600D, joinery under, laminate finish
FJO-099	CAC: cable access cap
FJO-135	CUPBOARD: underbench, double door, adj shelves
FJO-145	CUPBOARD: wall mount, double door, adj shelves, lockable
FJO-212	BULKHEAD: joinery
FJO-213	PANEL: joinery carcass end
FLSK-010	SKIRTING: vinyl, floor vinyl coved, 150H, prefinished
FLVY-004	FLOOR FINISH: vinyl, seamless, coved, non-slip, safety
FOBS-028	CHAIR: visitor, clinical areas
FOBS-051	STOOL: mobile, adj height
FQCW-016	BIN: waste, general, 20L

CODE	DESCRIPTION
FQCW-044	BIN: waste, sharps, wall mounted
FOGE-005	CLOCK: analogue, battery operated
HYBA-010	BASIN: handwash, Type B
HYBA-079	SINK: single, dental
HYTP-037	TAPWARE: mixer, elbow levers
HYTP-038	TAPWARE: mixer, elbow levers, long
ITCL-004	BUTTON: nurse call, emergency
ITIN-016	OUTLET: data, single RJ45, wall mounted
ITIN-026	OUTLET: data, double RJ45, wall mounted
ITNE-053	TELEPHONE: handset, wall mount, handsfree
ITNE-063	DISPLAY SCREEN: for computer
ITNE-067	KEYBOARD: keyboard and mouse only
ITSE-006	BUTTON: duress, fixed
LIFX-008	LIGHT: task light, built in
MGAS-032	OUTLET: nitrous oxide (N2O), on services panel
MGAS-042	OUTLET: oxygen (O2), on services panel
MGAS-053	OUTLET: scavenge, on services panel
MGAS-062	OUTLET: suction, on services panel
MGFP-004	FLOWMETER: oxygen
MMDN-002	CHAIR: dental, electric
MMDN-016	TROLLEY: dental
MMDN-018	X-RAY UNIT: dental, wall mounted
MMDN-020	LIGHT: dental, ceiling mounted
MMDN-021	CONSOLE: dental assistant, chair mounted
MMDN-022	CONSOLE: dentist, chair mounted
MMDN-025	MONITOR: dentist, chair mounted
MMGE-002	ADAPTER: suction
MMGE-100	SUCTION BOTTLE
MMSP-026	SERVICES PANEL: wall mounted
WLWA-004	WALL FINISH: paint, acrylic, washable
WLWA-007	WALL FINISH: splashback
WLWA-010	WALL FINISH: splashback, vinyl

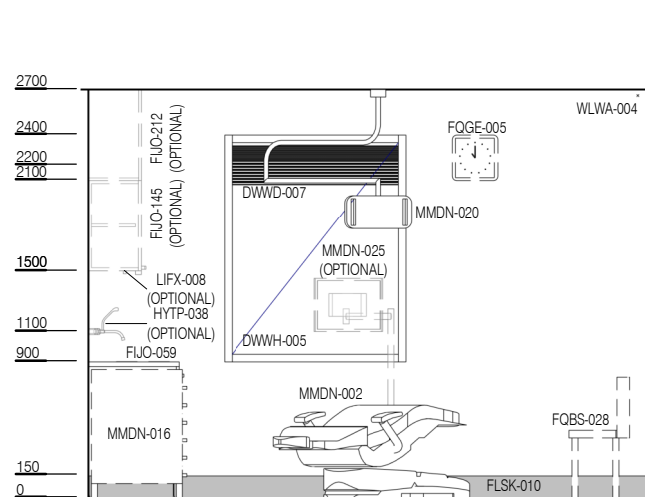
STANDARD COMPONENT PROVIDES A CONFIGURATION FOR SWITCHING BETWEEN A RIGHT-HANDED AND LEFT-HANDED SET UP AND SHOULD NOT BE MIRRORED. DENTAL SURGERY LAYOUTS WILL VARY AND WILL BE DEPENDENT ON EXISTING/PROPOSED WORKFLOWS AND THE EQUIPMENT PROCURED.



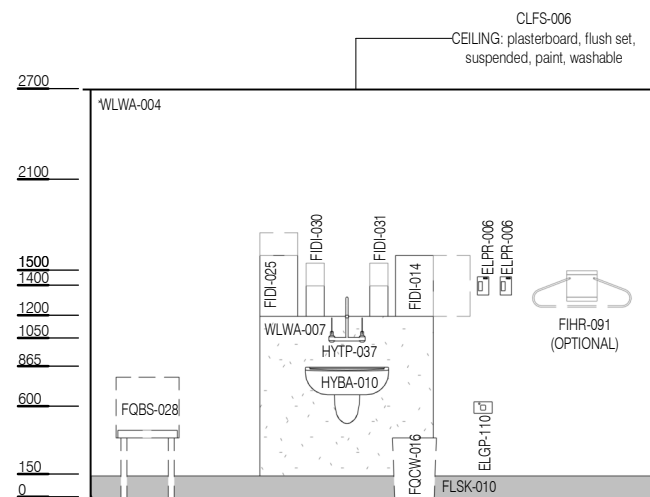
PLAN



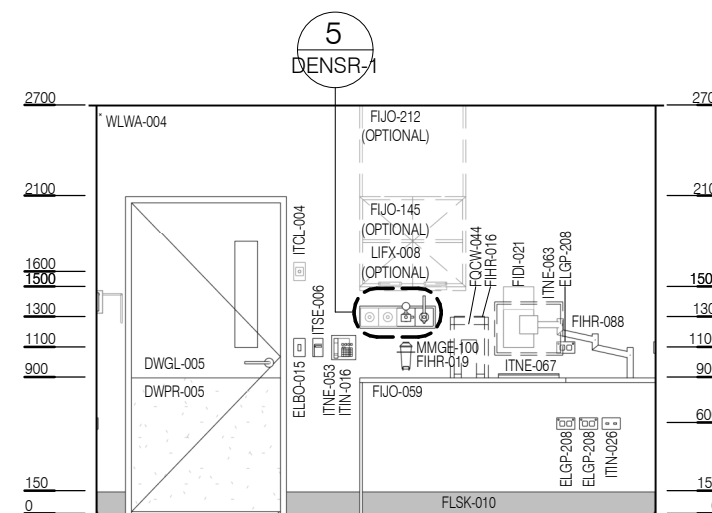
ELEVATION 5 (1 : 25 @ A3)



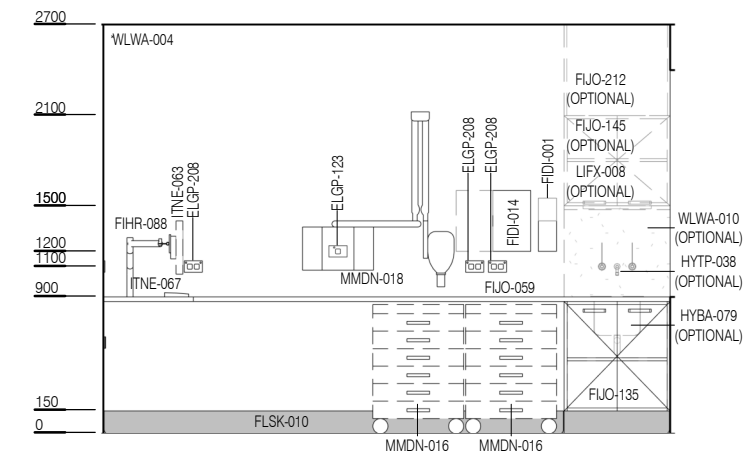
ELEVATION 1



ELEVATION 2



ELEVATION 3



ELEVATION 4



REV	DESCRIPTION	DATE
1	First Issue	28.06.2021

FOR GUIDANCE

SCALE	RLS Room Code	REV
1 : 50 @ A3	DENSR-1	1