

# AUSTRALASIAN HFG STANDARD COMPONENTS

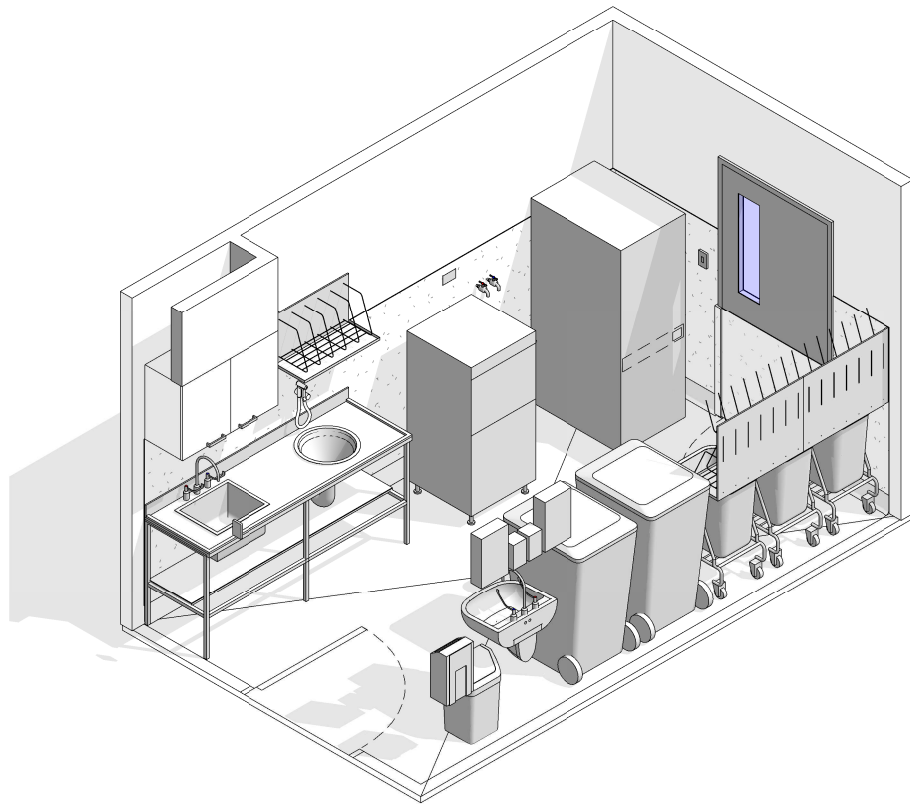
Room Layout Sheet

RLS Room Code: **DTUR-12**

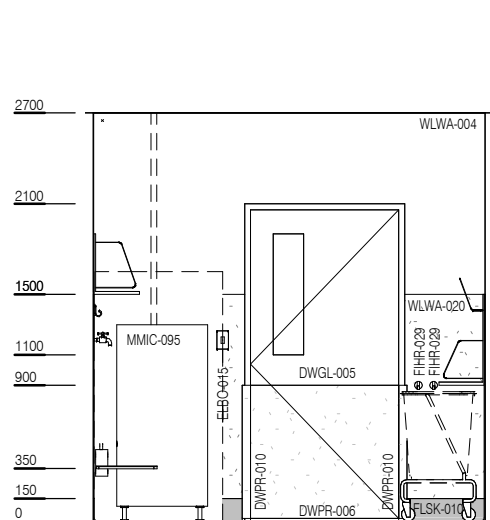
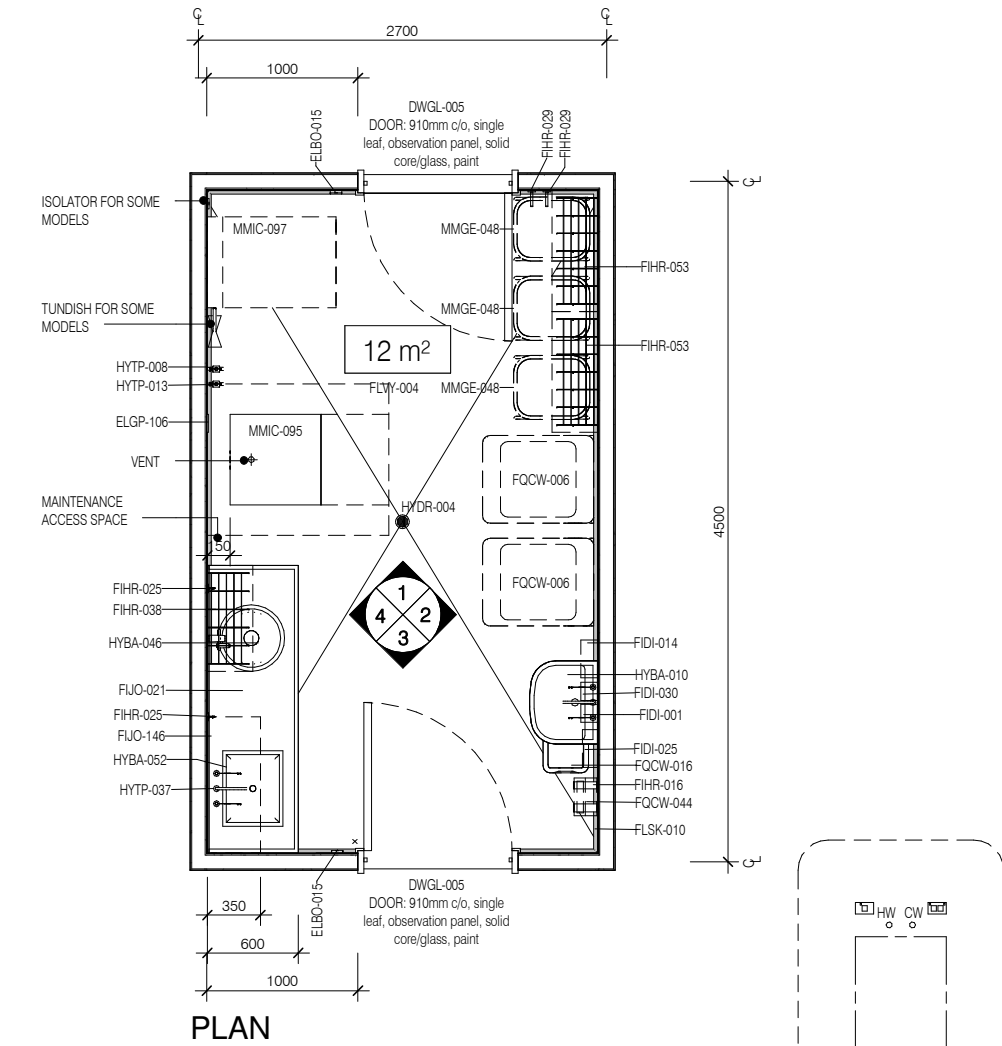
1:50 2.5m 2 1.5 1 0.5 0

Room Name:

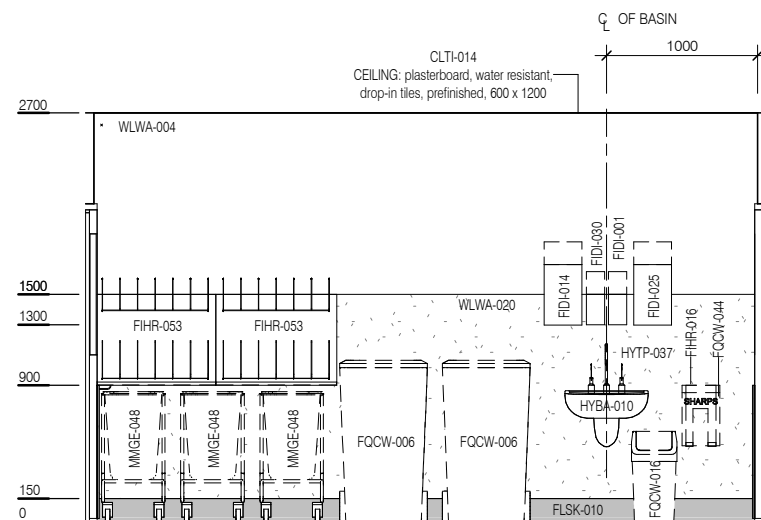
**DIRTY UTILITY, 12m<sup>2</sup>**



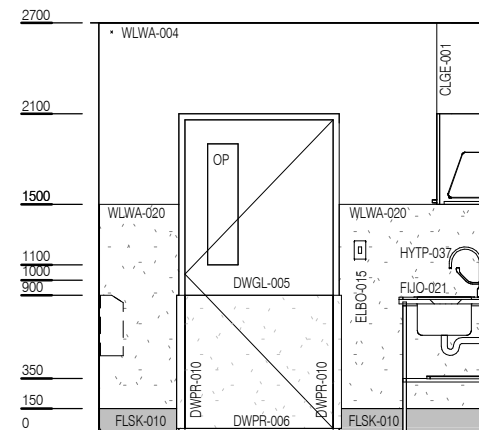
CODE	DESCRIPTION
CLGE-001	CEILING: plasterboard, bulkhead, paint
DWPR-006	DOOR PROTECTION: protection plate, to 900 AFFL, PVC, prefinished
DWPR-010	DOOR PROTECTION: to door frame, PVC, prefinished
ELBO-015	SWITCH: light, single
ELGP-106	GPO: single, special, for equipment
ELGP-208	GPO: double, wall mounted
ELPR-003	ISOLATOR: electrical, 1ph+n
FIDI-001	DISPENSER: alcohol based hand rub
FIDI-014	DISPENSER: disposable glove
FIDI-025	DISPENSER: paper/hand towel
FIDI-030	DISPENSER: soap
FIHR-016	BRACKET: for sharps bin
FIHR-025	HOOK: catheter bag
FIHR-029	HOOK: equipment
FIHR-038	RACK: bowl/basin
FIHR-053	RACK: pan & urinal
FUO-021	BENCH: 600D, open under, stainless steel lipped
FUO-100	BENCH LEGS: stainless steel, for bench top
FUO-146	CUPBOARD: wall mount, double door, adj shelves, waterproof carcassing
FUO-197	SHELF: stainless steel, underbench
FLSK-010	SKIRTING: vinyl, floor vinyl coved, 150H, prefinished
FLVY-004	FLOOR FINISH: vinyl, seamless, coved, non-slip, safety
FOCW-006	BIN: waste, clinical, 240L
FOCW-016	BIN: waste, general, 20L
FOCW-044	BIN: waste, sharps, wall mounted
HYBA-010	BASIN: handwash, Type B
HYBA-046	SINK: flushing rim
HYBA-052	SINK: single, 450 x 350 x 250D
HYDR-004	DRAIN: floor waste
HYTP-006	HOSE: spray, pressure control
HYTP-008	OUTLET: cold water
HYTP-013	OUTLET: hot water
HYTP-037	TAPWARE: mixer, elbow levers
MMGE-048	LINEN CARRIER: dirty, single
MMIC-095	WASHER SANITISER: pan flusher
MMIC-097	WASHER SANITISER: utensil washer
WLWA-004	WALL FINISH: paint, acrylic, washable
WLWA-020	WALL FINISH: vinyl, to 1500 AFFL



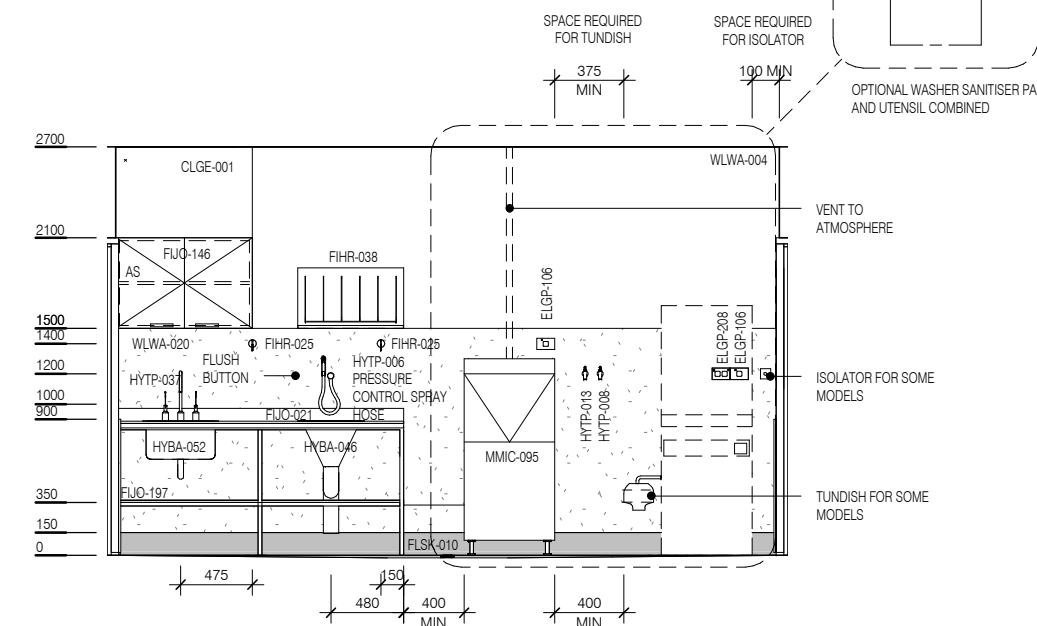
ELEVATION 1



ELEVATION 2



ELEVATION 3



ELEVATION 4



REV	DESCRIPTION	DATE
5	Coding and naming updated	20.03.2017

FOR GUIDANCE

SCALE	RLS Room Code	REV
1 : 50 @ A3	DTUR-12	5