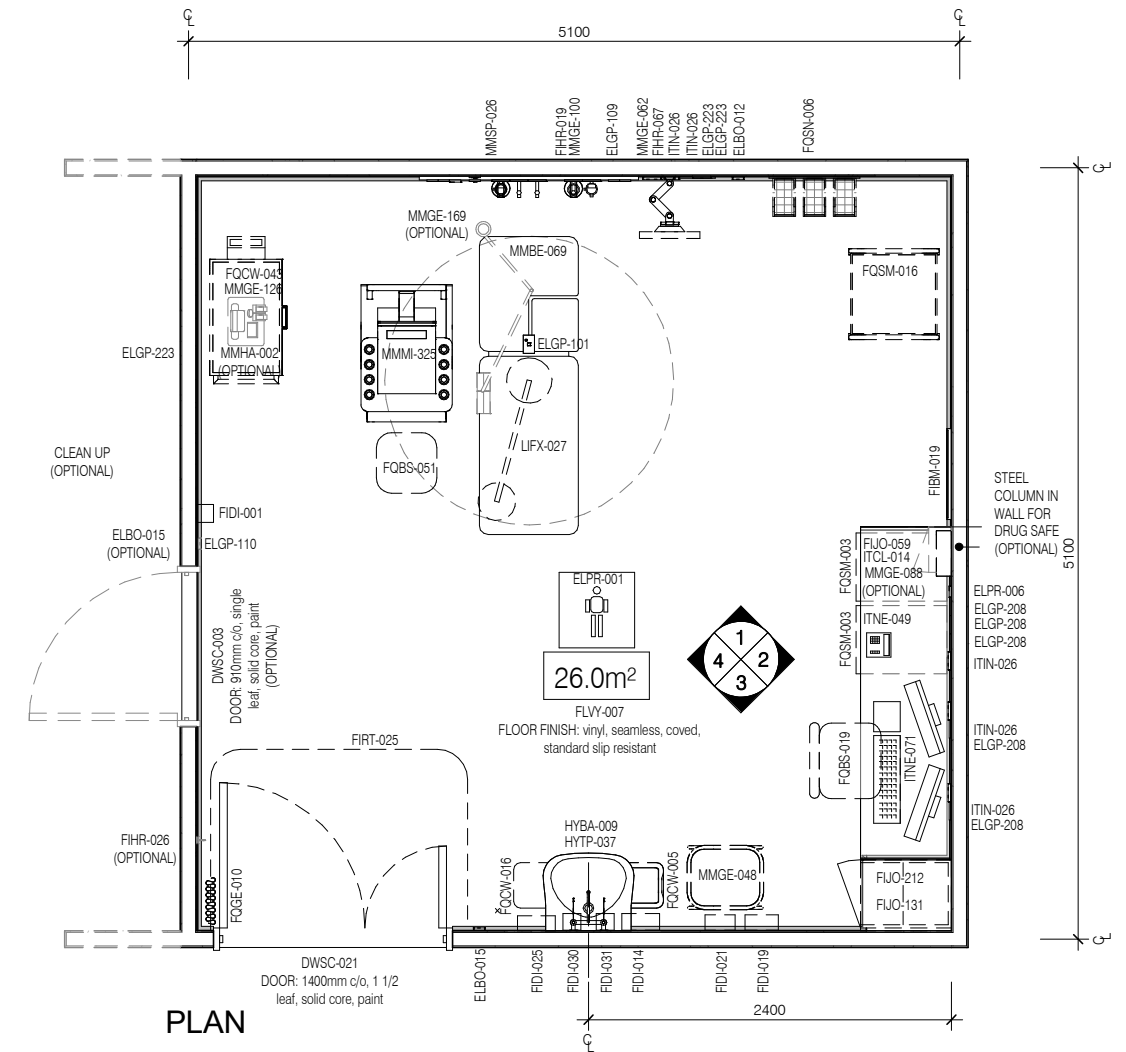
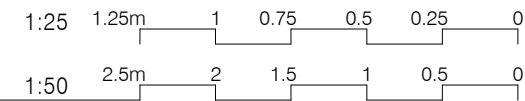


AUSTRALASIAN HFG STANDARD COMPONENTS

Room Layout Sheet

RLS Room Code: **ECHO-TOE**

Room Name: **ECHOCARDIOGRAPHY - TRANSOESOPHAGEAL**



CODE	DESCRIPTION
DWPR-005	DOOR PROTECTION: protection plate to 900 AFFL
ELBO-012	SWITCH: light, dimmer
ELBO-015	SWITCH: light, single
ELGP-101	GPO: single, ceiling mounted
ELGP-109	GPO: single, wall mounted
ELGP-110	GPO: single, wall mounted, cleaner
ELGP-122.1	GPO: emergency power, single, on services panel (V)
ELGP-123	GPO: emergency power, single, wall mounted
ELGP-208	GPO: double, wall mounted
ELGP-223	GPO: emergency power, double, wall mounted
ELPR-001	BODY PROTECTED ELECTRICAL AREA
ELPR-006	RCD: residual current device
FIBM-019	WHITEBOARD: fixed, magnetic
FIDI-001	DISPENSER: alcohol based hand rub
FIDI-014	DISPENSER: disposable glove
FIDI-019	DISPENSER: gown/apron
FIDI-021	DISPENSER: mask
FIDI-025	DISPENSER: paper/hand towel
FIDI-030	DISPENSER: soap
FIDI-031	DISPENSER: soap antiseptic
FIHR-019	BRACKET: for suction bottle
FIHR-026	HOOK: coat
FIHR-033	PANEL: for storage bins, wall mount
FIHR-067	BRACKET: for monitor, wall mounted, articulated, adj height
FIJO-059	BENCH TOP: 600D, joinery under, laminate finish
FIJO-131	CUPBOARD: tall, single door, adj shelves, lockable
FIJO-212	BULKHEAD: joinery
FIRT-025	TRACK: curtain, bedscreen, U shaped
FLSK-010	SKIRTING: vinyl, floor vinyl coved, 150H, prefinished
FLVY-007	FLOOR FINISH: vinyl, seamless, coved, standard slip resistant

CODE	DESCRIPTION
FOBS-019	CHAIR: office, ergonomic, high
FOBS-051	STOOL: mobile, adj height
FQCW-005	BIN: waste, clinical, 20L
FQCW-016	BIN: waste, general, 20L
FQCW-043	BIN: waste, sharps, on trolley
FQGE-010	CURTAIN: privacy screen
FQSM-003	PEDESTAL: mobile, wire basket unit, 840H
FQSM-016	TROLLEY
FQSN-006	BIN: storage bins, for wall mounted panel
HYBA-009	BASIN: handwash, Type A, scrub
HYTP-037	TAPWARE: mixer, elbow levers
ITCL-004	BUTTON: nurse call, emergency
ITCL-008	BUTTON: nurse call, staff assist
ITCL-014	CLOCK: analogue, electric
ITIN-016	OUTLET: data, single RJ45, wall mounted
ITIN-026	OUTLET: data, double RJ45, wall mounted
ITNE-049	TELEPHONE: handset, desktop
ITNE-071	COMPUTER: desktop, with dual display screens
LIFX-027	LIGHT: examination, ceiling mounted
MGAS-022	OUTLET: medical air (MA), on services panel
MGAS-042	OUTLET: oxygen (O2), on services panel
MGAS-062	OUTLET: suction, on services panel
MGFP-002	FLOWMETER: medical air
MGFP-004	FLOWMETER: oxygen
MMBE-069	TROLLEY: patient, echocardiography
MMGE-002	ADAPTER: suction
MMGE-048	LINEN CARRIER: dirty, single
MMGE-062	MONITOR: patient, dynamap
MMGE-088	SAFE: dangerous drugs, small
MMGE-100	SUCTION BOTTLE

CODE	DESCRIPTION
MMGE-126	TROLLEY: intubation
MMGE-169	SLING: arm, dynamic, ceiling mounted
MMHA-002	DEFIBRILLATOR
MMMI-325	DEVICE: imaging, echocardiography machine
MMSP-026	SERVICES PANEL: wall mounted
WLWA-004	WALL FINISH: paint, acrylic, washable
WLWA-025	WALL FINISH: vinyl, to 1200 AFFL



REV	DESCRIPTION	DATE
5	General update following ERG review	13.05.2020

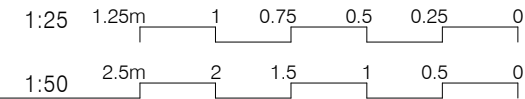
FOR GUIDANCE

SCALE	RLS Room Code	REV
1 : 50 @ A3	ECHO-TOE	5

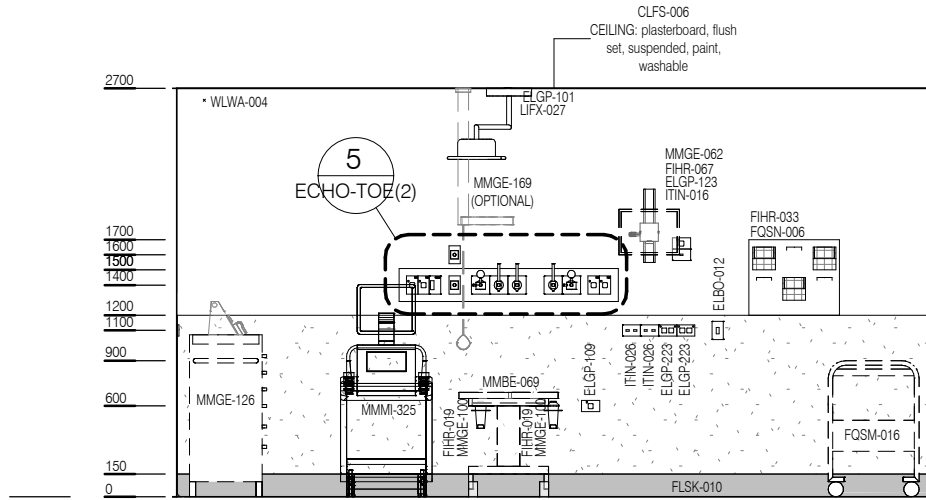
AUSTRALASIAN HFG STANDARD COMPONENTS

Room Layout Sheet

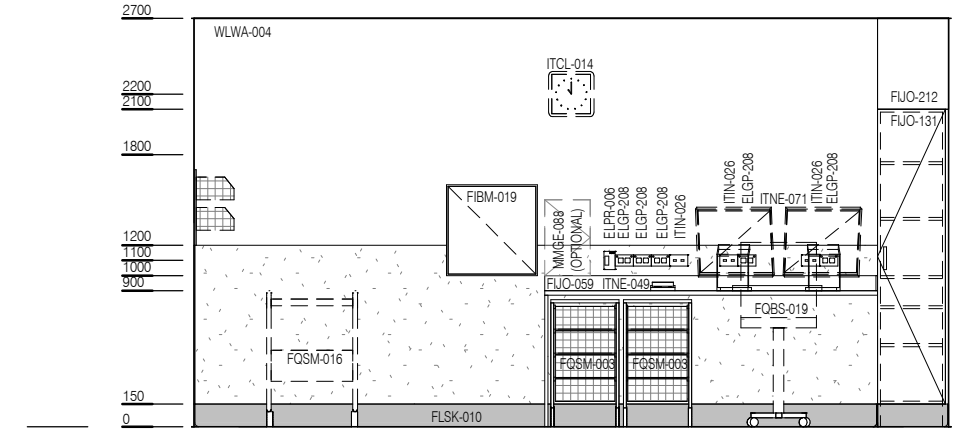
RLS Room Code: ECHO-TOE



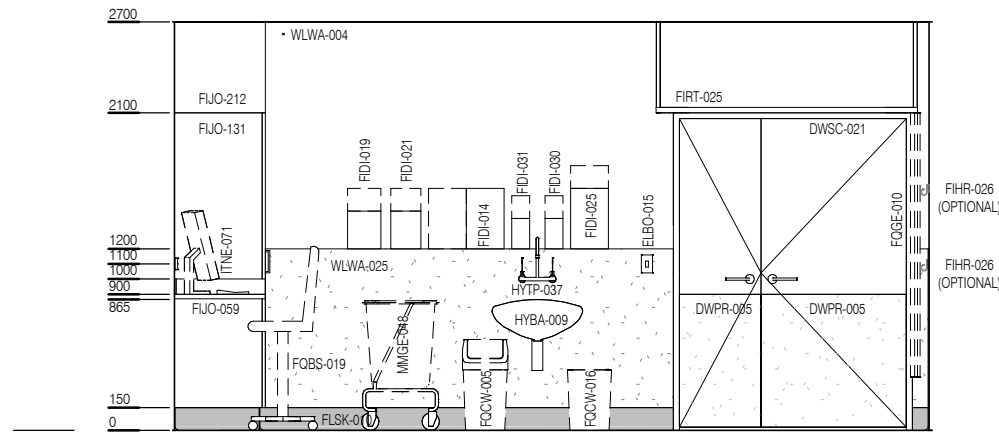
Room Name: ECHOCARDIOGRAPHY - TRANSOESOPHAGEAL



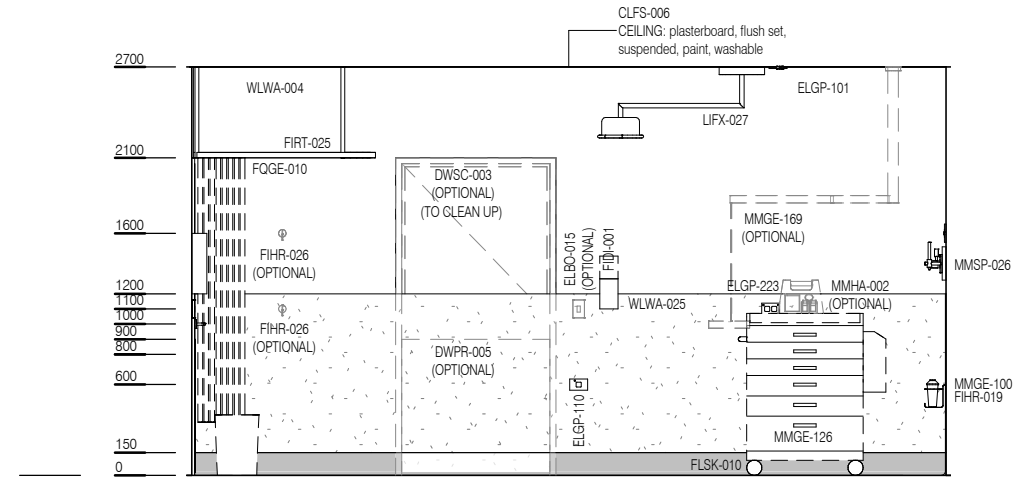
ELEVATION 1



ELEVATION 2



ELEVATION 3

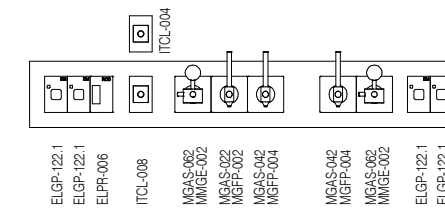


ELEVATION 4

CODE	DESCRIPTION
DWPR-005	DOOR PROTECTION: protection plate to 900 AFFL
ELBO-012	SWITCH: light, dimmer
ELBO-015	SWITCH: light, single
ELGP-101	GPO: single, ceiling mounted
ELGP-109	GPO: single, wall mounted
ELGP-110	GPO: single, wall mounted, cleaner
ELGP-122.1	GPO: emergency power, single, on services panel (V)
ELGP-123	GPO: emergency power, single, wall mounted
ELGP-208	GPO: double, wall mounted
ELGP-223	GPO: emergency power, double, wall mounted
ELPR-001	BODY PROTECTED ELECTRICAL AREA
ELPR-006	RCD: residual current device
FIBM-019	WHITEBOARD: fixed, magnetic
FIDI-001	DISPENSER: alcohol based hand rub
FIDI-014	DISPENSER: disposable glove
FIDI-019	DISPENSER: gown/apron
FIDI-021	DISPENSER: mask
FIDI-025	DISPENSER: paper/hand towel
FIDI-030	DISPENSER: soap
FIDI-031	DISPENSER: soap antiseptic
FIHR-019	BRACKET: for suction bottle
FIHR-026	HOOK: coat
FIHR-033	PANEL: for storage bins, wall mount
FIHR-067	BRACKET: for monitor, wall mounted, articulated, adj height
FUJO-059	BENCH TOP: 600D, joinery under, laminate finish
FUJO-131	CUPBOARD: tall, single door, adj shelves, lockable
FUJO-212	BULKHEAD: joinery
FIRT-025	TRACK: curtain, bedscreen, U shaped
FLSK-010	SKIRTING: vinyl, floor vinyl coved, 150H, prefinished
FLVY-007	FLOOR FINISH: vinyl, seamless, coved, standard slip resistant

CODE	DESCRIPTION
FQBS-019	CHAIR: office, ergonomic, high
FQBS-051	STOOL: mobile, adj height
FQCW-005	BIN: waste, clinical, 20L
FQCW-016	BIN: waste, general, 20L
FQCW-043	BIN: waste, sharps, on trolley
FQGE-010	CURTAIN: privacy screen
FQSM-003	PEDESTAL: mobile, wire basket unit, 840H
FQSM-016	TROLLEY
FQSN-006	BIN: storage bins, for wall mounted panel
HYBA-009	BASIN: handwash, Type A, scrub
HYTP-037	TAPWARE: mixer, elbow levers
ITCL-004	BUTTON: nurse call, emergency
ITCL-008	BUTTON: nurse call, staff assist
ITCL-014	CLOCK: analogue, electric
ITIN-016	OUTLET: data, single RJ45, wall mounted
ITIN-026	OUTLET: data, double RJ45, wall mounted
ITNE-049	TELEPHONE: handset, desktop
ITNE-071	COMPUTER: desktop, with dual display screens
LIFX-027	LIGHT: examination, ceiling mounted
MGAS-022	OUTLET: medical air (MA), on services panel
MGAS-042	OUTLET: oxygen (O2), on services panel
MGAS-062	OUTLET: suction, on services panel
MGFP-002	FLOWMETER: medical air
MGFP-004	FLOWMETER: oxygen
MMBE-069	TROLLEY: patient, echocardiography
MMGE-002	ADAPTER: suction
MMGE-048	LINEN CARRIER: dirty, single
MMGE-062	MONITOR: patient, dynamap
MMGE-088	SAFE: dangerous drugs, small
MMGE-100	SUCTION BOTTLE

CODE	DESCRIPTION
MMGE-126	TROLLEY: intubation
MMGE-169	SLING: arm, dynamic, ceiling mounted
MMHA-002	DEFIBRILLATOR
MMMI-325	DEVICE: imaging, echocardiography machine
MMSP-026	SERVICES PANEL: wall mounted
WLWA-004	WALL FINISH: paint, acrylic, washable
WLWA-025	WALL FINISH: vinyl, to 1200 AFFL



ELEVATION 5 (1 : 25 @ A3)



REV	DESCRIPTION	DATE
5	General update following ERG review	13.05.2020

FOR GUIDANCE

SCALE	RLS Room Code	REV
1 : 50 @ A3	ECHO-TOE	5