

# AUSTRALASIAN HFG STANDARD COMPONENTS

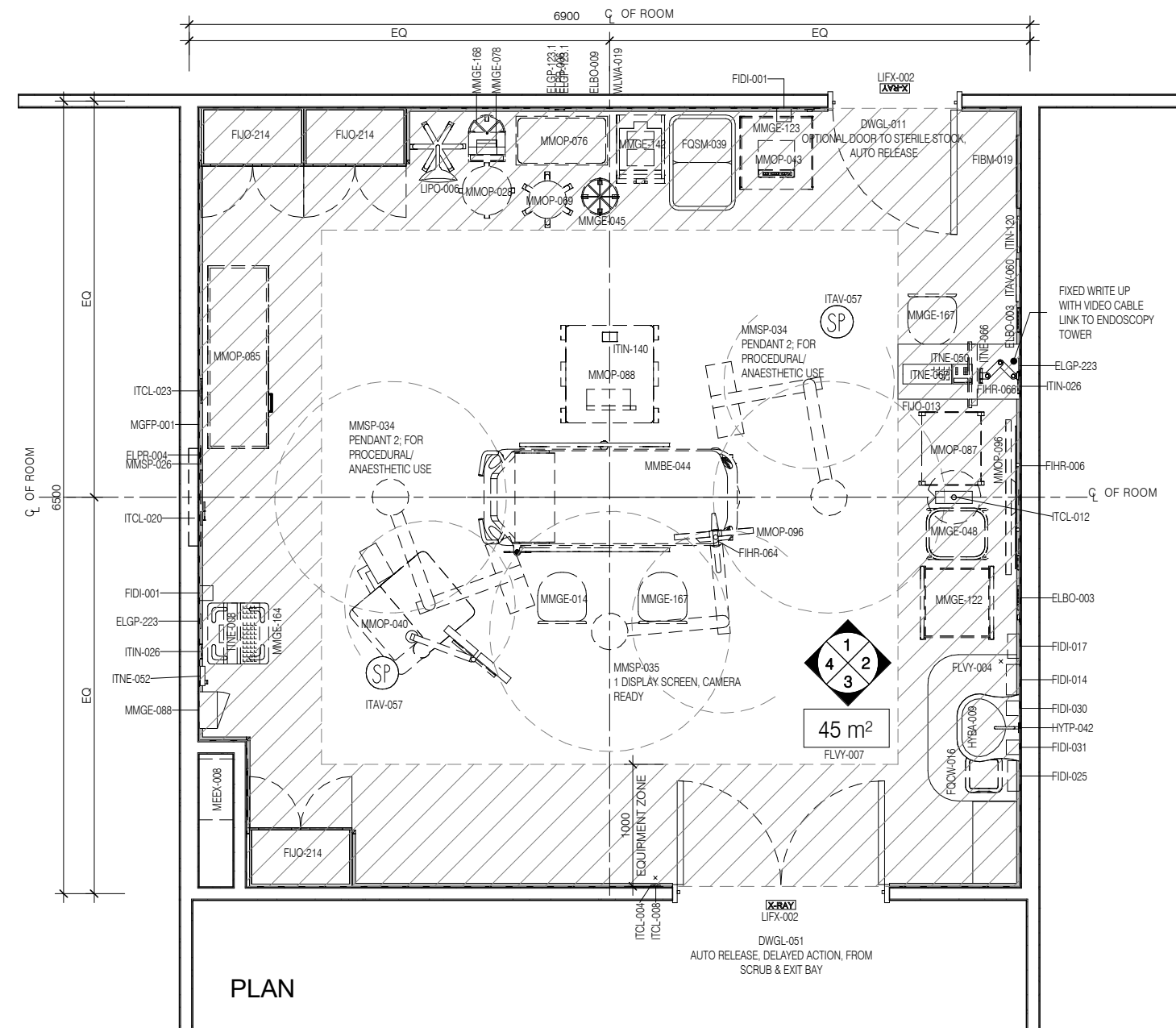
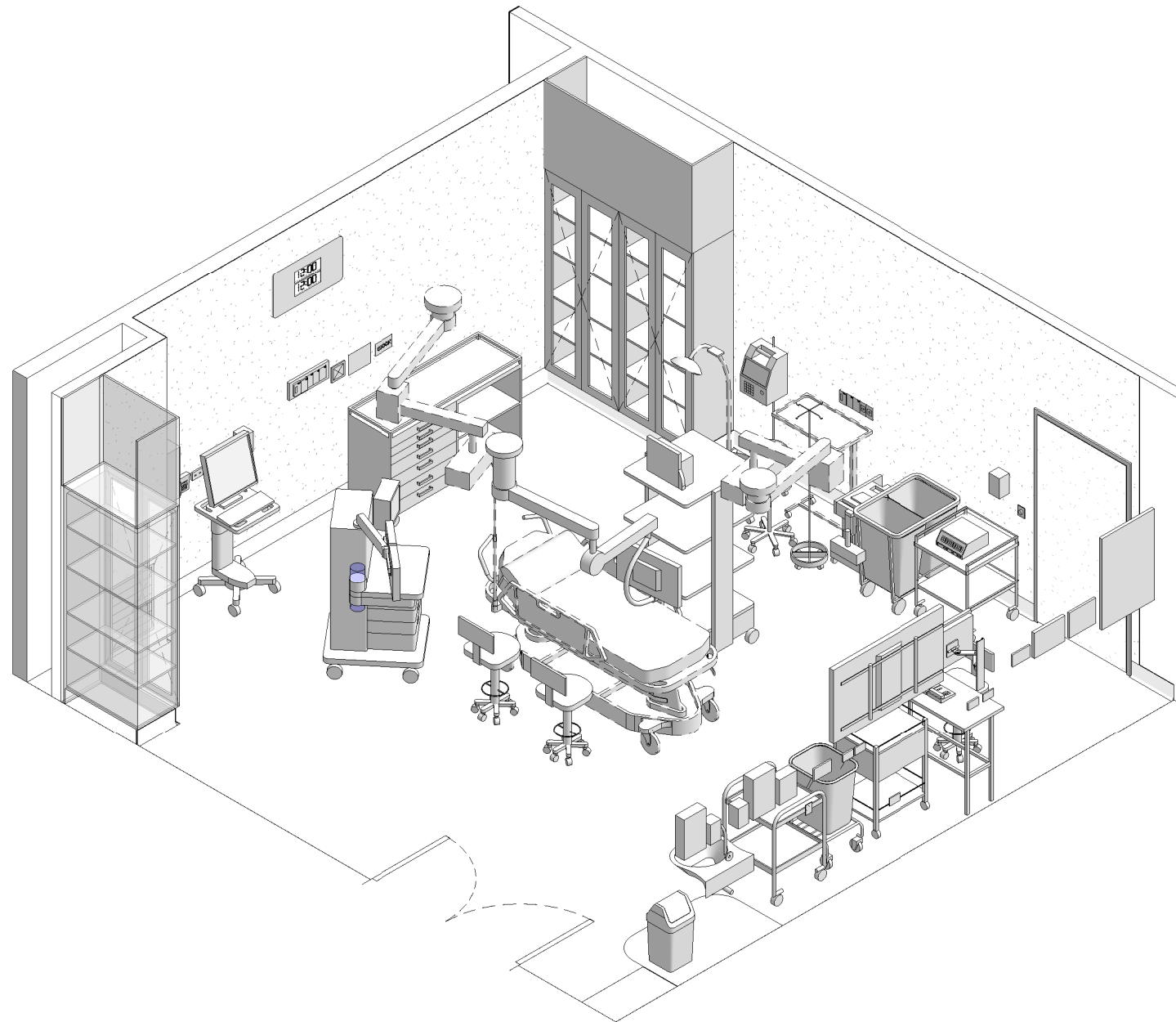
Room Layout Sheet

RLS Room Code: **ENPR**

1:50 2.5m 2 1.5 1 0.5 0

Room Name:

**PROCEDURE ROOM - ENDOSCOPY**



**PLAN**

CODE	DESCRIPTION
DWPR-011	DOOR PROTECTION: protection plate, to full height
DWWH-007	SHUTTER: for observation panel, magnetic flap for laser protection
ELBO-003	CONTROL PANEL: lighting
ELBO-009	SWITCH: "Laser in use"
ELBO-016	SWITCH: "X-Ray in use"
ELGP-110	GPO: single, wall mounted, cleaner
ELGP-122.1	GPO: emergency power, single, on services panel (V)
ELGP-123.1	GPO: emergency power, single, wall mounted (V)
ELGP-223	GPO: emergency power, double, wall mounted
ELPR-004	MONITOR: line isolation
ELPR-006	RCD: residual current device
FIBM-019	WHITEBOARD: fixed, magnetic
FIDI-001	DISPENSER: alcohol based hand rub
FIDI-014	DISPENSER: disposable glove
FIDI-017	DISPENSER: goggles
FIDI-025	DISPENSER: paper/hand towel
FIDI-030	DISPENSER: soap
FIDI-031	DISPENSER: soap antiseptic
FIHR-006	BRACKET: for display screen, wall mounted
FIHR-064	BRACKET: for display screen, arm mounted, rotating
FIHR-066	BRACKET: for display screen, wall mounted, articulated, adj height

CODE	DESCRIPTION
FUJO-013	BENCH: 450D, open under, stainless steel
FUJO-100	BENCH LEGS: stainless steel, for bench top
FUJO-212	BULKHEAD: Joinery
FUJO-214	CUPBOARD: tall, double door, glazed, adj shelves, lockable
FLSK-010	SKIRTING: vinyl, floor vinyl coved, 150H, prefinished
FLVY-004	FLOOR FINISH: vinyl, seamless, coved, non-slip, safety
FLVY-007	FLOOR FINISH: vinyl, seamless, coved, standard slip resistant
FQCW-016	BIN: waste, general, 20L
FQSM-039	TROLLEY: waste bag
HYBA-009	BASIN: handwash, Type A, scrub
HYTP-042	TAPWARE: sensor
ITAV-057	SPEAKER: ceiling recessed
ITAV-060	CONTROL PANEL: AV integration system, wall mount
ITCL-004	BUTTON: nurse call, emergency
ITCL-008	BUTTON: nurse call, staff assist
ITCL-012	CAMERA: observation
ITCL-020	CLOCK: clock system slave, dual digital / elapsed time
ITCL-023	CONTROL PANEL: master clock system
ITIN-026	OUTLET: data, double RJ45, wall mounted
ITIN-120	PATCH PANEL: data integration
ITIN-140	DATA PANEL: data / AV outlets, ceiling mounted

CODE	DESCRIPTION
ITNE-008	COMPUTER: for workstation on wheels
ITNE-050	TELEPHONE: handset, desktop, handsfree
ITNE-052	TELEPHONE: handset, wall mount
ITNE-066	COMPUTER: all-in-one, wall mounted
ITNE-067	KEYBOARD: keyboard and mouse only
ITSE-025	DOOR RELEASE: access control, remote activation
LIFX-002	LIGHT: illuminated sign, "X-Ray in Use"
LIPO-006	LIGHT: examination, mobile
MEEEX-008	EXHAUST: low level
MGFP-001	ALARM PANEL: medical gases
MMBE-044	TROLLEY: patient, transport
MMGE-014	CHAIR: anaesthetist
MMGE-045	IV STAND: mobile
MMGE-048	LINEN CARRIER: dirty, single
MMGE-078	PUMP: infusion
MMGE-088	SAFE: dangerous drugs, small
MMGE-122	TROLLEY: gowns
MMGE-123	TROLLEY: instrument
MMGE-142	TROLLEY: sharps bin
MMGE-164	WORKSTATION ON WHEELS: clinical
MMGE-167	CHAIR: surgeon

CODE	DESCRIPTION
MMGE-168	STAND: infusion pump, mobile
MMOP-028	KICKBUCKET & STAND:
MMOP-040	MACHINE: anaesthetic
MMOP-043	MACHINE: electrosurgical, diathermy
MMOP-069	STAND: bowl, single
MMOP-076	TABLE: mayo
MMOP-085	TROLLEY: anaesthetic
MMOP-087	TROLLEY: endoscope
MMOP-088	TROLLEY: endoscopic, equipment
MMOP-096	DISPLAY SCREEN: AV integration
MMSP-026	SERVICES PANEL: wall mounted
MMSP-034	PENDANT: single, dual arm, surgical & anaesthetic combined (fixed or adjustable height)
MMSP-035	PENDANT: single, dual arm, display screen
WLWA-019	WALL FINISH: vinyl, full height

NOTE: REFER TO RDS FOR PENDANT MOUNTED SERVICES AS THESE ITEMS ARE NOT INCLUDED IN THIS SCHEDULE



REV	DESCRIPTION	DATE
1	FIRST ISSUE	02.07.2018

FOR GUIDANCE

SCALE	RLS Room Code	REV
1 : 50 @ A3	ENPR	1

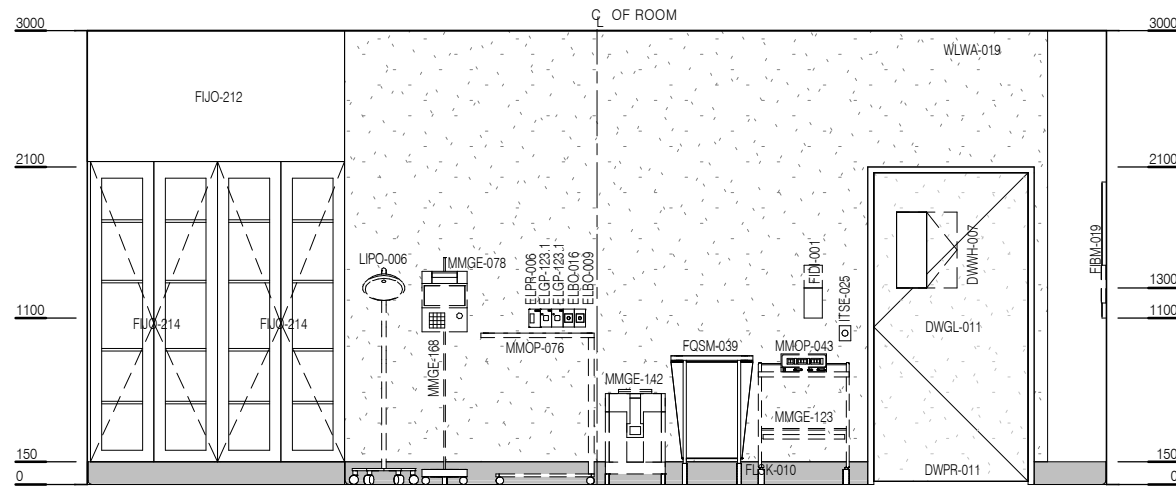
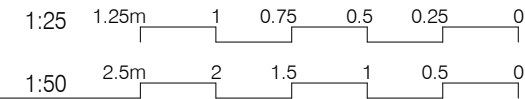
# AUSTRALASIAN HFG STANDARD COMPONENTS

Room Layout Sheet

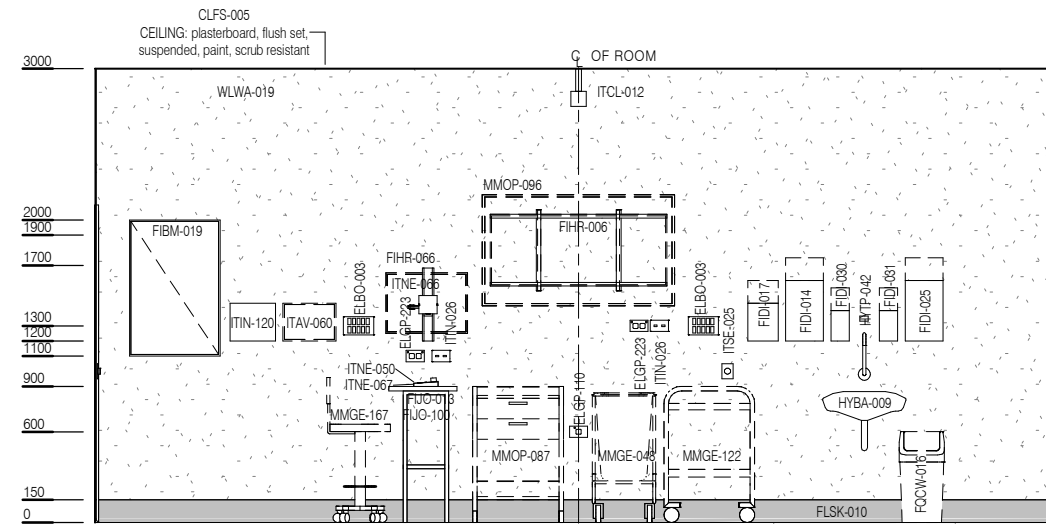
RLS Room Code: **ENPR**

Room Name:

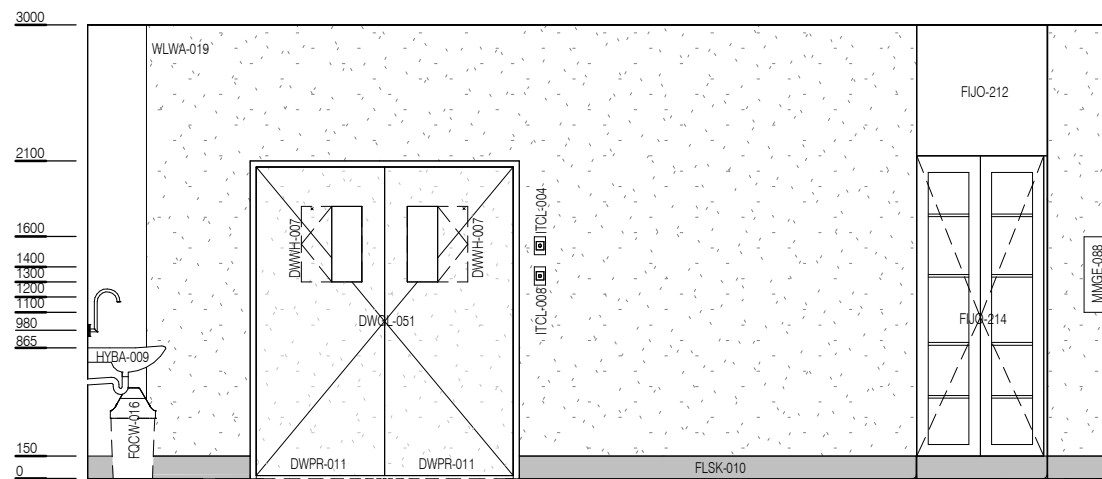
**PROCEDURE ROOM - ENDOSCOPY**



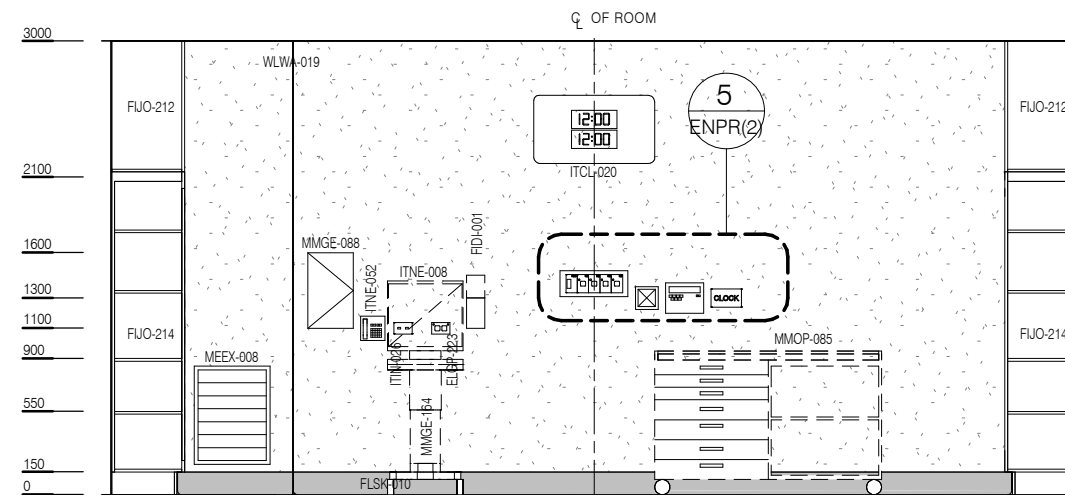
**ELEVATION 1**



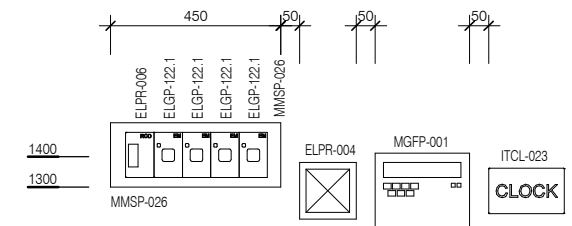
**ELEVATION 2**



**ELEVATION 3**



**ELEVATION 4**



**ELEVATION 5 ( 1 : 20 @ A3 )**

CONSIDER INCLUSION OF WALL GASSES IF REQUIRED FOR PENDANT BACK-UP

CODE	DESCRIPTION
DWPR-011	DOOR PROTECTION: protection plate, to full height
DWWH-007	SHUTTER: for observation panel, to full height
ELBO-003	CONTROL PANEL: lighting
ELBO-009	SWITCH: "Laser in use"
ELBO-016	SWITCH: "X-Ray in use"
ELGP-110	GPO: single, wall mounted, cleaner
ELGP-122.1	GPO: emergency power, single, on services panel (V)
ELGP-123.1	GPO: emergency power, single, wall mounted (V)
ELGP-223	GPO: emergency power, double, wall mounted
ELPR-004	MONITOR: line isolation
ELPR-006	RCD: residual current device
FIBM-019	WHITEBOARD: fixed, magnetic
FIDI-001	DISPENSER: alcohol based hand rub
FIDI-014	DISPENSER: disposable glove
FIDI-017	DISPENSER: goggles
FIDI-025	DISPENSER: paper/hand towel
FIDI-030	DISPENSER: soap
FIDI-031	DISPENSER: soap antiseptic
FIHR-006	BRACKET: for display screen, wall mounted
FIHR-064	BRACKET: for display screen, arm mounted, rotating
FIHR-066	BRACKET: for display screen, wall mounted, articulated, adj height

CODE	DESCRIPTION
FUJO-013	BENCH: 450D, open under, stainless steel
FUJO-100	BENCH LEGS: stainless steel, for bench top
FUJO-212	BULKHEAD: Joinery
FUJO-214	CUPBOARD: tall, double door, glazed, adj shelves, lockable
FLSK-010	SKIRTING: vinyl, floor vinyl coved, 150H, prefinished
FLVY-004	FLOOR FINISH: vinyl, seamless, coved, non-slip, safety
FLVY-007	FLOOR FINISH: vinyl, seamless, coved, standard slip resistant
FQCW-016	BIN: waste, general, 20L
FOSM-039	TROLLEY: waste bag
HYBA-009	BASIN: handwash, Type A, scrub
HYTP-042	TAPWARE: sensor
ITAV-057	SPEAKER: ceiling recessed
ITAV-060	CONTROL PANEL: AV integration system, wall mount
ITCL-004	BUTTON: nurse call, emergency
ITCL-008	BUTTON: nurse call, staff assist
ITCL-012	CAMERA: observation
ITCL-020	CLOCK: clock system slave, dual digital / elapsed time
ITCL-023	CONTROL PANEL: master clock system
ITIN-026	OUTLET: data, double RJ45, wall mounted
ITIN-120	PATCH PANEL: data integration
ITIN-140	DATA PANEL: data / AV outlets, ceiling mounted

CODE	DESCRIPTION
ITNE-008	COMPUTER: for workstation on wheels
ITNE-050	TELEPHONE: handset, desktop, handsfree
ITNE-052	TELEPHONE: handset, wall mount
ITNE-066	COMPUTER: all-in-one, wall mounted
ITNE-067	KEYBOARD: keyboard and mouse only
ITSE-025	DOOR RELEASE: access control, remote activation
LIFX-002	LIGHT: illuminated sign, "X-Ray in Use"
LIPO-006	LIGHT: examination, mobile
MEEEX-008	EXHAUST: low level
MGFP-001	ALARM PANEL: medical gases
MMBE-044	TROLLEY: patient, transport
MMGE-014	CHAIR: anaesthetist
MMGE-045	IV STAND: mobile
MMGE-048	LINEN CARRIER: dirty, single
MMGE-078	PUMP: infusion
MMGE-088	SAFE: dangerous drugs, small
MMGE-122	TROLLEY: gowns
MMGE-123	TROLLEY: instrument
MMGE-142	TROLLEY: sharps bin
MMGE-164	WORKSTATION ON WHEELS: clinical mobile
MMGE-167	CHAIR: surgeon

CODE	DESCRIPTION
MMGE-168	STAND: infusion pump, mobile
MMOP-028	KICKBUCKET & STAND:
MMOP-040	MACHINE: anaesthetic
MMOP-043	MACHINE: electrosurgical, diathermy
MMOP-069	STAND: bowl, single
MMOP-076	TABLE: mayo
MMOP-085	TROLLEY: anaesthetic
MMOP-087	TROLLEY: endoscope
MMOP-088	TROLLEY: endoscopic, equipment
MMOP-096	DISPLAY SCREEN: AV integration
MMSP-026	SERVICES PANEL: wall mounted
MMSP-034	PENDANT: single, dual arm, surgical & anaesthetic combined (fixed or adjustable height)
MMSP-035	PENDANT: single, dual arm, display screen
WLWA-019	WALL FINISH: vinyl, full height

NOTE: REFER TO RDS FOR PENDANT MOUNTED SERVICES AS THESE ITEMS ARE NOT INCLUDED IN THIS SCHEDULE



REV	DESCRIPTION	DATE
1	FIRST ISSUE	02.07.2018

**FOR GUIDANCE**

SCALE	RLS Room Code	REV
1 : 50 @ A3	ENPR	1