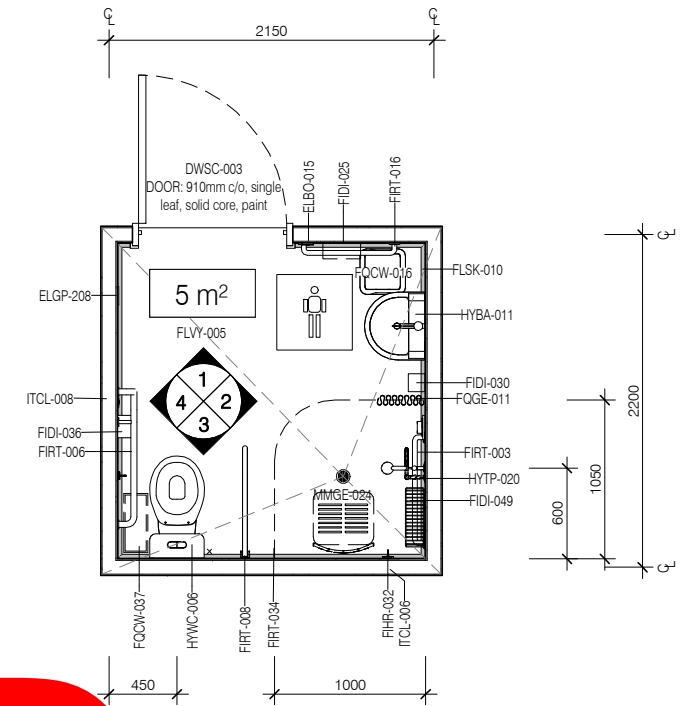
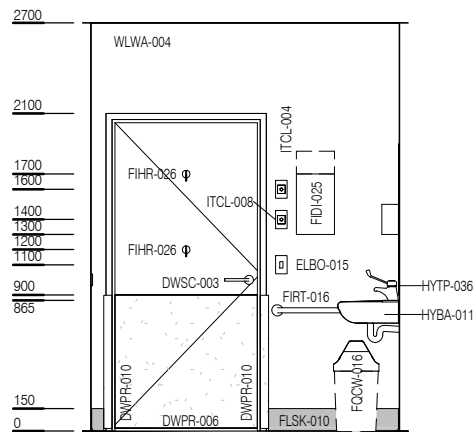


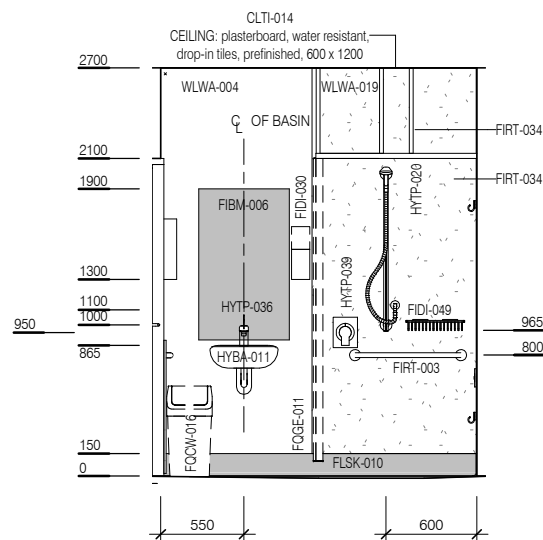
| CODE | DESCRIPTION |
|----------|--|
| DWPR-006 | DOOR PROTECTION: protection plate, to 900 AFFL, PVC, prefinished |
| DWPR-010 | DOOR PROTECTION: to door frame, PVC, prefinished |
| ELBO-015 | SWITCH: light, single |
| ELGP-208 | GPO: double, wall mounted |
| ELPR-001 | BODY PROTECTED ELECTRICAL AREA |
| FIBM-006 | MIRROR: fixed, glass |
| FIDI-025 | DISPENSER: paper/hand towel |
| FIDI-030 | DISPENSER: soap |
| FIDI-036 | DISPENSER: toilet paper |
| FIDI-049 | HOLDER: soap/shampoo, non-recessed |
| FIHR-025 | HOOK: catheter bag |
| FIHR-026 | HOOK: coat |
| FIHR-032 | HOOK: IV, wall mounted |
| FIRT-003 | GRAB RAIL: shower, horizontal |
| FIRT-006 | GRAB RAIL: WC |
| FIRT-008 | GRAB RAIL: WC, hinged |
| FIRT-016 | RAIL: towel |
| FIRT-034 | TRACK: curtain, shower, 90 deg |
| FLSK-010 | SKIRTING: vinyl, floor vinyl coved, 150H, prefinished |
| FLVY-005 | FLOOR FINISH: vinyl, seamless, coved, non slip, studded |
| FQCW-016 | BIN: waste, general, 20L |
| FQCW-037 | BIN: waste, sanitary |
| FQGE-011 | CURTAIN: shower |
| HYBA-011 | BASIN: handwash, Type C |
| HYDR-004 | DRAIN: floor waste |
| HYTP-020 | SHOWER: hand-held |
| HYTP-036 | TAPWARE: mixer, basin, lever action |
| HYTP-039 | TAPWARE: mixer, shower, lever action |
| HYWC-006 | TOILET SUITE: patient |
| WLWA-004 | WALL FINISH: paint, acrylic, washable |
| WLWA-019 | WALL FINISH: vinyl, full height |



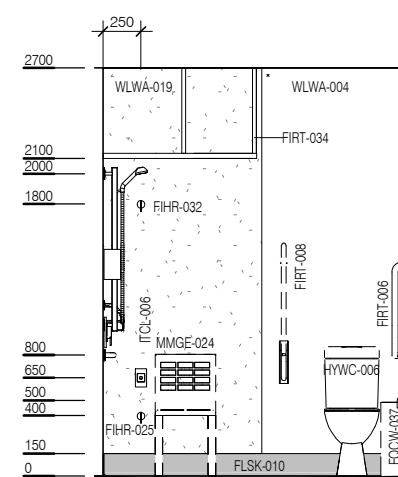
RETIRED



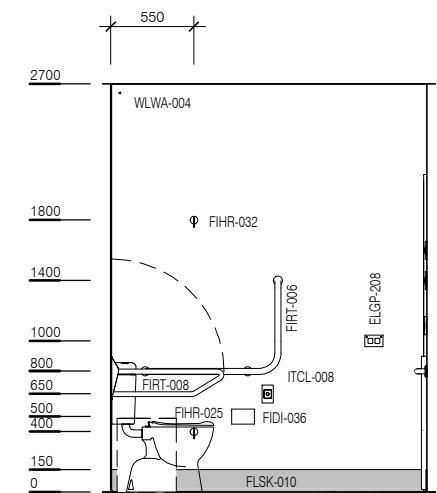
ELEVATION 1



ELEVATION 2



ELEVATION 3



ELEVATION 4