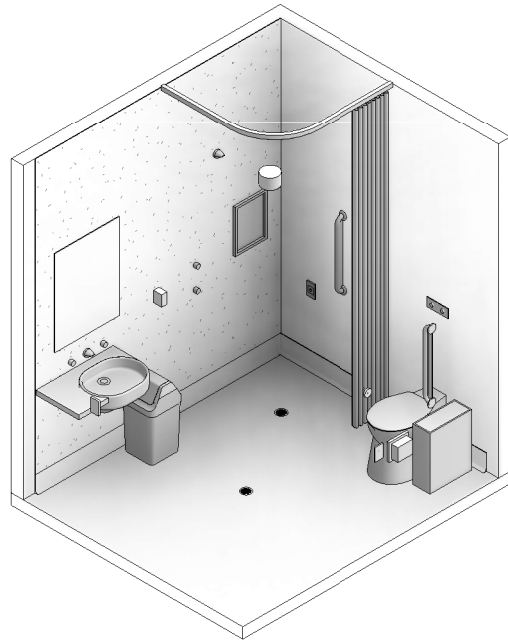


AUSTRALASIAN HFG STANDARD COMPONENTS

Room Layout Sheet

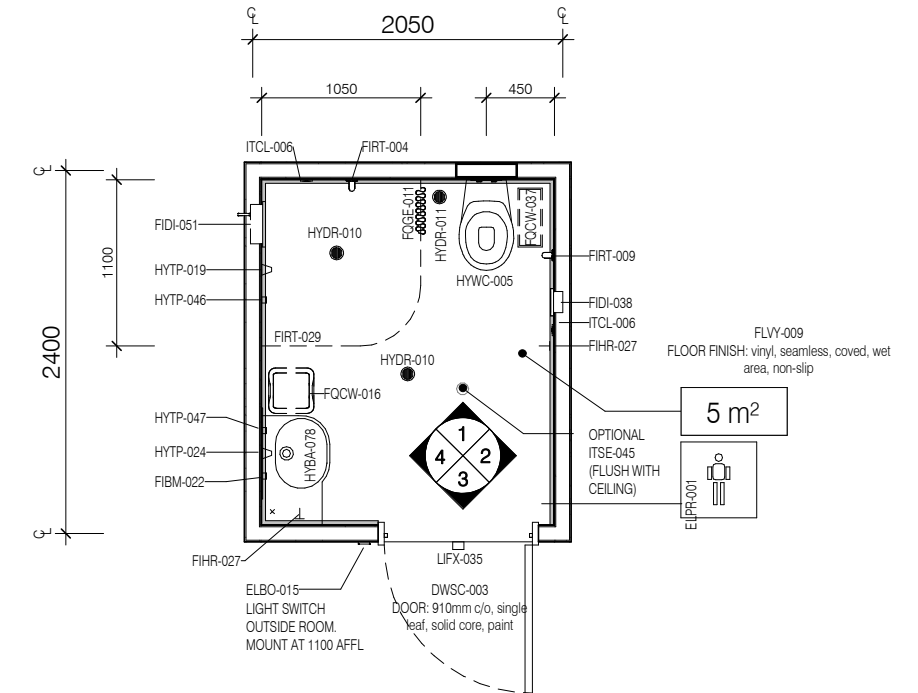
RLS Room Code: **ENS-MH-B**

Room Name: **ENSUITE - MENTAL HEALTH, INBOARD ACCESS FROM CORRIDOR, 5m²**

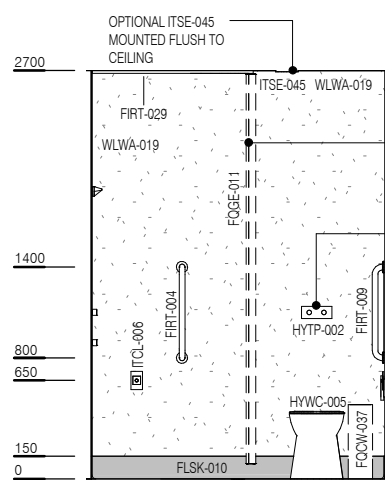


CODE	DESCRIPTION
ELBO-015	SWITCH: light, single
FIBM-022	MIRROR: fixed, safety glass, toughened and laminated, anti ligature
FIDI-038	DISPENSER: toilet paper, recessed
FIDI-051	HOLDER: soap/shampoo, recessed, vertical format
FIHR-027	HOOK: coat, collapsible, anti ligature
FIRT-004	GRAB RAIL: shower, anti ligature
FIRT-009	GRAB RAIL: WC, anti ligature
FIRT-029	TRACK: curtain, plastic, recessed
FLSK-010	SKIRTING: vinyl, floor vinyl coved, 150H, prefinished
FLYV-009	FLOOR FINISH: vinyl, seamless, coved, wet area, non-slip
FQCW-016	BIN: waste, general, 20L
FQCW-037	BIN: waste, sanitary
FQGE-011	CURTAIN: shower
HYBA-078	BASIN: with integrated shelf
HYDR-010	DRAIN: floor waste, anti ligature
HYDR-011	DRAIN: clear out, anti ligature
HYTP-002	FLUSH BUTTON: toilet suite
HYTP-019	SHOWER: fixed rose, anti ligature
HYTP-024	SPOUT: basin, anti ligature
HYTP-046	TAPWARE: hot and cold taps, shower, anti ligature
HYTP-047	TAPWARE: hot and cold taps, basin, anti ligature
HYWC-005	TOILET SUITE: concealed cistern, floor mounted
ITCL-006	BUTTON: nurse call, patient to staff
ITSE-045	SENSOR: motion detection, for lighting control, flush to ceiling
LIFX-035	LIGHT: occupancy light
WLWA-019	WALL FINISH: vinyl, full height

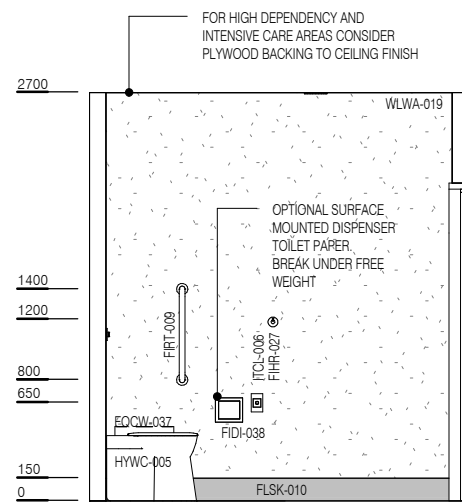
NOTE: GRABRAILS ARE OPTIONAL. DEPENDING ON NATURE OF CLINICAL SERVICES



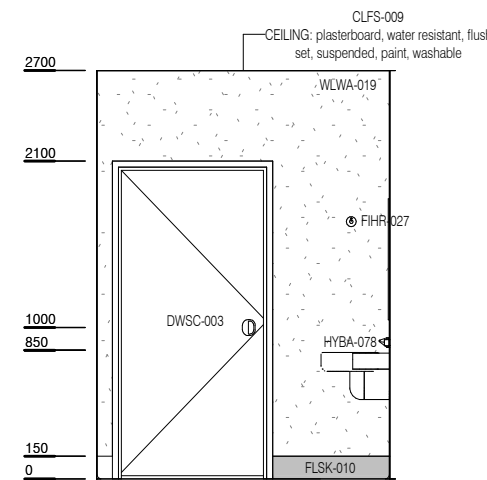
PLAN



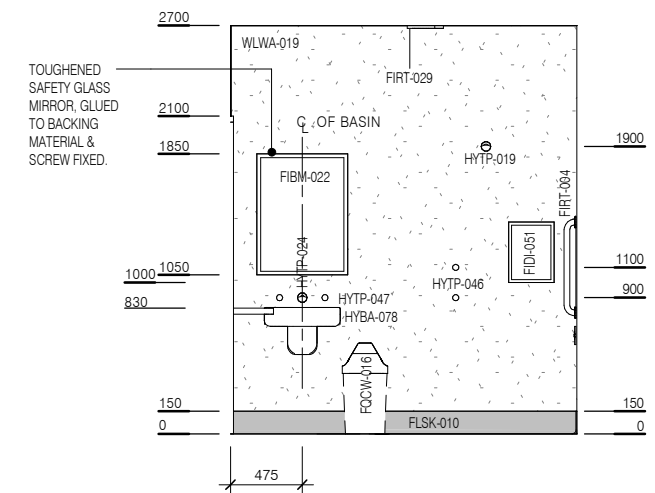
ELEVATION 1



ELEVATION 2



ELEVATION 3



ELEVATION 4



REV	DESCRIPTION	DATE
1	First Issue	23.05.2005
2	GENERAL UPDATE FOLLOWING ERG.. REVIEW	02.07.2018

FOR GUIDANCE

SCALE	RLS Room Code	REV
1 : 50 @ A3	ENS-MH-B	2