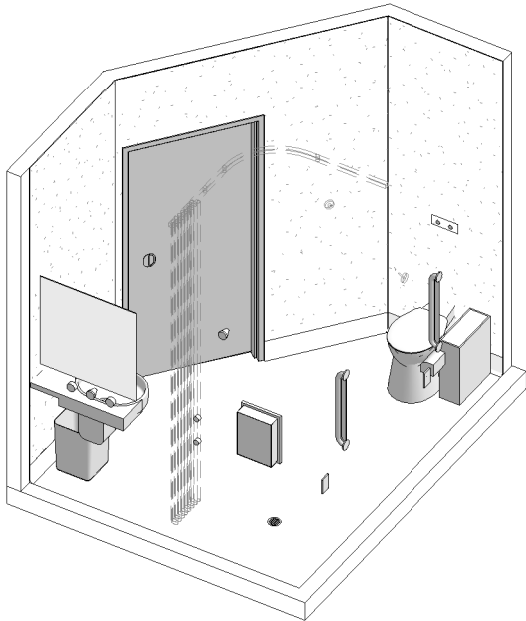
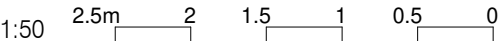


AUSTRALASIAN HFG STANDARD COMPONENTS

Room Layout Sheet

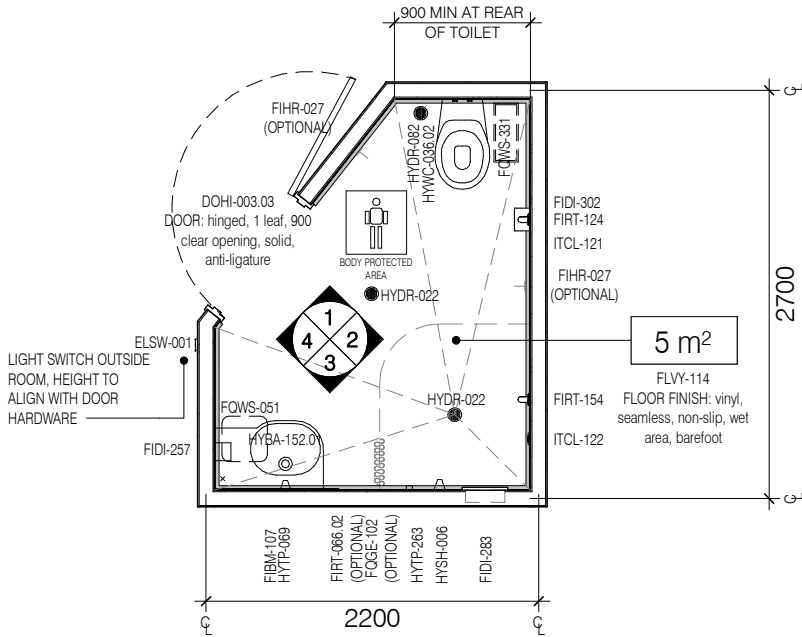
RLS Room Code: ENS-MH-IN

Room Name: ENSUITE - MENTAL HEALTH, INBOARD



CODE	DESCRIPTION
FIBM-107	MIRROR: fixed, safety glass, toughened and laminated, frameless, recessed, tamper proof, anti-ligature
FIDI-257	DISPENSER: soap, wall mounted, anti-ligature
FIDI-283	HOLDER: soap/shampoo, wall recessed, tamper proof, anti-ligature
FIDI-302	DISPENSER: toilet paper, wall mounted, tamper proof, anti-ligature
FIHR-027	HOOK: coat, collapsible, tamper proof, anti-ligature
FIRT-066.02	TRACK: curtain, shower, recessed/collapsible, anti-ligature, L-shaped
FIRT-124	GRAB RAIL: toilet, straight, vertical, tamper proof, anti-ligature
FIRT-154	GRAB RAIL: shower, straight, vertical, tamper proof, anti-ligature
FLSK-022	SKIRTING: vinyl, integral with floor vinyl, coved, tamper proof, anti-ligature
FLVY-114	FLOOR FINISH: vinyl, seamless, non-slip, wet area, barefoot
FQGE-102	CURTAIN: shower
FQWS-051	BIN: general waste, 20L
FQWS-331	BIN: sanitary waste
HYBA-152.01	BASIN: type C, handwashing, anti-ligature, with integral single shelf, left
HYDR-022	DRAIN: floor waste, round, tamper proof, anti-ligature
HYDR-082	DRAIN: clear out, round, tamper proof, anti-ligature
HYSH-006	SHOWER: fixed rose, wall mounted, anti-ligature
HYTP-002	FLUSH BUTTON: toilet suite
HYTP-069	TAPWARE: basin, tap set, wall mounted, anti-ligature
HYTP-263	TAPWARE: shower, tap set, anti-ligature
HYWC-036.02	TOILET SUITE: patient, anti-ligature, tamper proof, concealed cistern
ITCL-121	BUTTON: patient to staff call, with cancel, wall mounted
ITCL-122	BUTTON: patient to staff call, with cancel, wall mounted, wet area
WLF-011.07	WALL FINISH: vinyl, full height

REQUIREMENTS FOR THE SELECTION OF SUITABLE FINISHES, HARDWARE, FIXTURES AND FITTINGS OF THE TYPE MANUFACTURED AND MARKED AS TAMPER PROOF AND ANTI-LIGATURE. INCLUDING ANY WEIGHT LIMITS FOR COLLAPSING/BREAKING STRAIN FOR FIXTURES) MUST BE CONFIRMED AT PROJECT LEVEL BASED ON LOCAL PATIENT SAFETY POLICIES, LOCAL DESIGN GUIDANCE, RISK ASSESSMENTS AND CONFIRMATION OF OPERATIONAL MODELS. ALL TAMPER PROOF AND ANTI-LIGATURE ITEMS MUST BE INSTALLED IN ACCORDANCE WITH THEIR MANUFACTURERS INSTRUCTIONS.



PLAN

DOOR IS SHOWN WITH ANGLED CUT DOWN AT TOP AND OPTIONAL CUT AT BOTTOM (SHOWN DASHED). ALTERNATIVELY MAGNETIC LOAD RELEASE LEAF/SALOON STYLE DOORS MAY BE PROVIDED. IT IS RECOMMENDED THAT THE DOOR SET IS SELECTED AS A FULL ASSEMBLY TO ENSURE THE LEAF, FRAME AND HARDWARE ARE COORDINATED AND MEET ALL TAMPER-PROOF, ANTI-LIGATURE AND ANTI-BARRICADE REQUIREMENTS WHEN USED TOGETHER

OPTIONAL: SOME JURISDICTIONS DO NOT SUPPORT THE PROVISION OF COAT HOOKS (eg, VICTORIA). REFER TO JURISDICTIONAL POLICIES FOR GUIDANCE. IN AREAS WHERE COAT HOOKS HAVE BEEN EXCLUDED, PROVISION OF SHELF SPACE FOR THE PLACEMENT OF DRY TOWELS/CLOTHING IS TO BE CONSIDERED

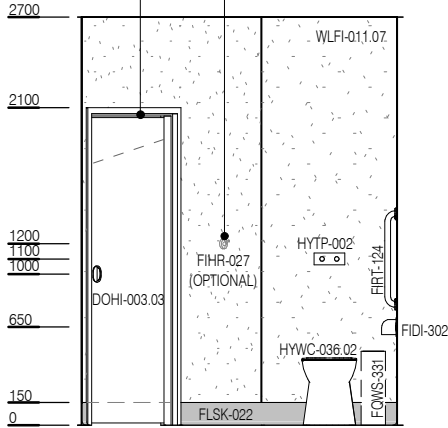
FOR HIGH DEPENDENCY AND INTENSIVE CARE AREAS CONSIDER PLYWOOD BACKING TO CEILING FINISH

OPTIONAL: INCLUSION OF LOAD RELEASE CURTAIN TRACK IS DEPENDENT ON JURISDICTIONAL POLICY

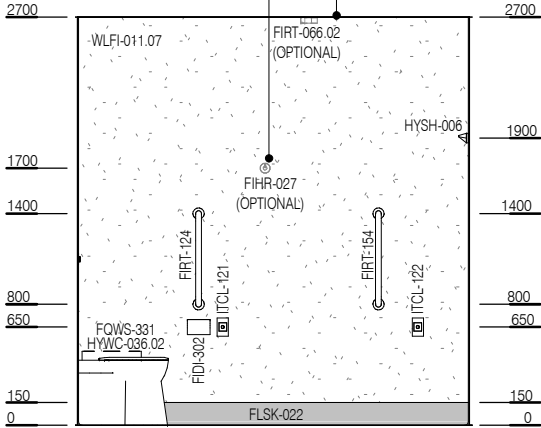
MATERIAL TO BE CONFIRMED AT PROJECT LEVEL TO SUIT SERVICE REQUIREMENTS. GLUED TO BACKING MATERIAL AND SCREW FIXED TO WALL (OR EQUIVALENT INSTALLATION METHOD). RECESSED TO BE FLUSH WITH WALL

CLFS-013
CEILING: flush set, suspended, moisture resistant

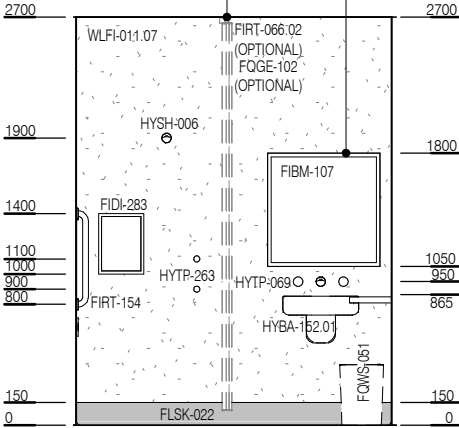
DOOR IS SHOWN WITH ANGLED CUT DOWN AT TOP AND OPTIONAL CUT AT BOTTOM (SHOWN DASHED). ALTERNATIVELY MAGNETIC LOAD RELEASE LEAF/SALOON STYLE DOORS MAY BE PROVIDED. IT IS RECOMMENDED THAT THE DOOR SET IS SELECTED AS A FULL ASSEMBLY TO ENSURE THE LEAF, FRAME AND HARDWARE ARE COORDINATED AND MEET ALL TAMPER-PROOF, ANTI-LIGATURE AND ANTI-BARRICADE REQUIREMENTS WHEN USED TOGETHER



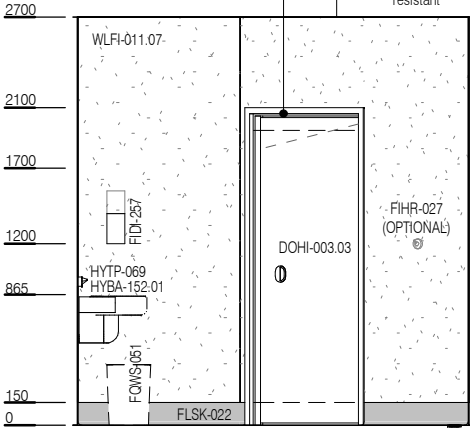
ELEVATION 1



ELEVATION 2



ELEVATION 3



ELEVATION 4