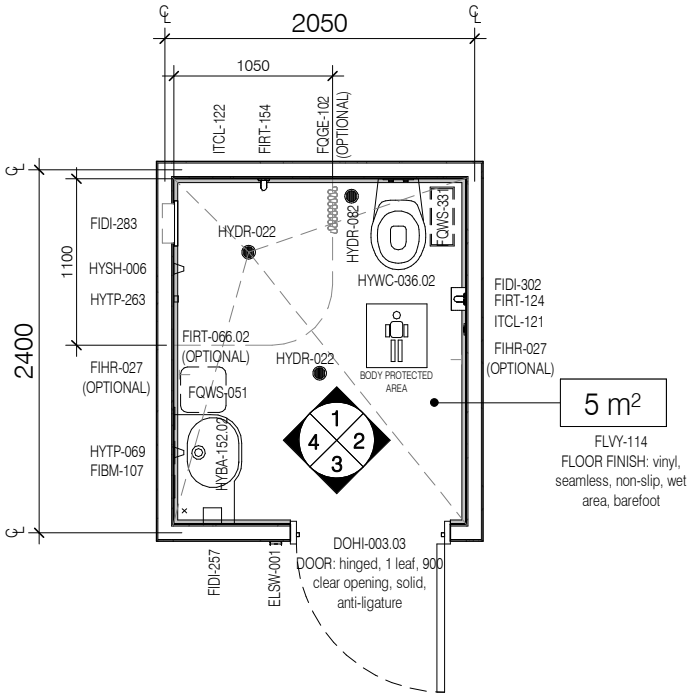
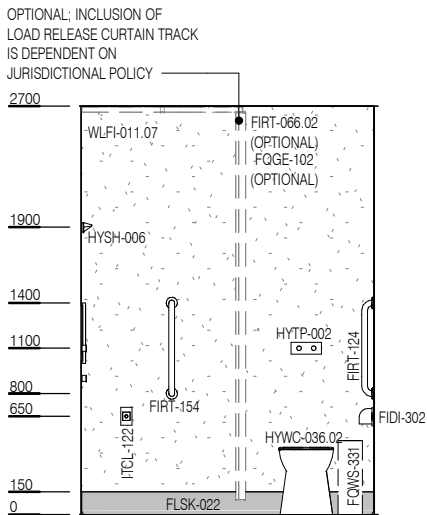


CODE	DESCRIPTION
FIBM-107	MIRROR: fixed, safety glass, toughened and laminated, frameless, recessed, tamper proof, anti-ligature
FIDI-257	DISPENSER: soap, wall mounted, anti-ligature
FIDI-283	HOLDER: soap/shampoo, wall recessed, tamper proof, anti-ligature
FIDI-302	DISPENSER: toilet paper, wall mounted, tamper proof, anti-ligature
FIHR-027	HOOK: coat, collapsible, tamper proof, anti-ligature
FIRT-066.02	TRACK: curtain, shower, recessed/collapsible, anti-ligature, L-shaped
FIRT-124	GRAB RAIL: toilet, straight, vertical, tamper proof, anti-ligature
FIRT-154	GRAB RAIL: shower, straight, vertical, tamper proof, anti-ligature
FLSK-022	SKIRTING: vinyl, integral with floor vinyl, coved, tamper proof, anti-ligature
FLVY-114	FLOOR FINISH: vinyl, seamless, non-slip, wet area, barefoot
FOGE-102	CURTAIN: shower
QOWS-051	BIN: general waste, 20L
QOWS-331	BIN: sanitary waste
HYBA-152.02	BASIN: type C, handwashing, anti-ligature, with integral single shelf, right
HYDR-022	DRAIN: floor waste, round, tamper proof, anti-ligature
HYDR-082	DRAIN: clear out, round, tamper proof, anti-ligature
HYSH-006	SHOWER: fixed rose, wall mounted, anti-ligature
HYTP-002	FLUSH BUTTON: toilet suite
HYTP-069	TAPWARE: basin, tap set, wall mounted, anti-ligature
HYTP-263	TAPWARE: shower, tap set, anti-ligature
HYWC-036.02	TOILET SUITE: patient, anti-ligature, tamper proof, concealed cistern
ITCL-121	BUTTON: patient to staff call, with cancel, wall mounted
ITCL-122	BUTTON: patient to staff call, with cancel, wall mounted, wet area
WLFI-011.07	WALL FINISH: vinyl, full height

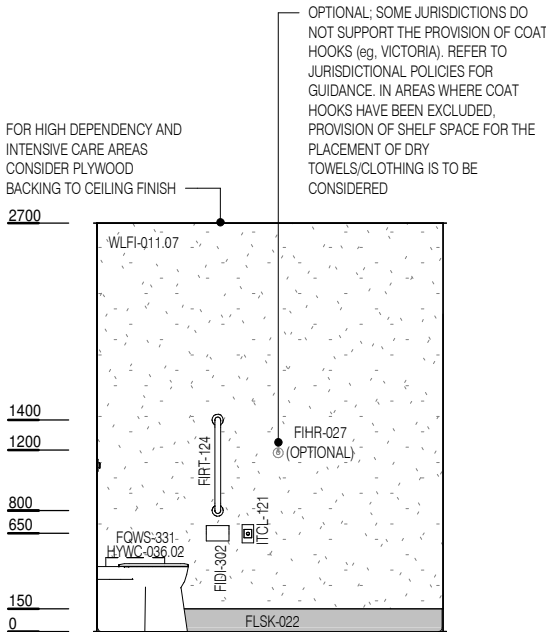
REQUIREMENTS FOR THE SELECTION OF SUITABLE FINISHES, HARDWARE, FIXTURES AND FITTINGS OF THE TYPE MANUFACTURED AND MARKETING AS TAMPER PROOF AND ANTI-LIGATURE, INCLUDING ANY WEIGHT LIMITS FOR COLLAPSING/BREAKING STRAIN FOR FIXTURES) MUST BE CONFIRMED AT PROJECT LEVEL BASED ON LOCAL PATIENT SAFETY POLICIES, LOCAL DESIGN GUIDANCE, RISK ASSESSMENTS AND CONFIRMATION OF OPERATIONAL MODELS. ALL TAMPER PROOF AND ANTI-LIGATURE ITEMS MUST BE INSTALLED IN ACCORDANCE WITH THEIR MANUFACTURERS INSTRUCTIONS.



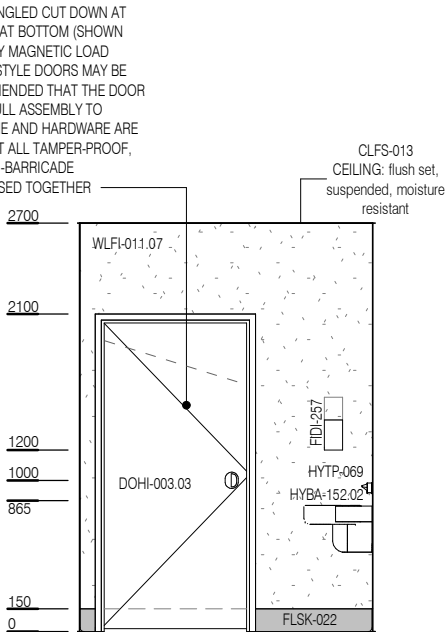
PLAN



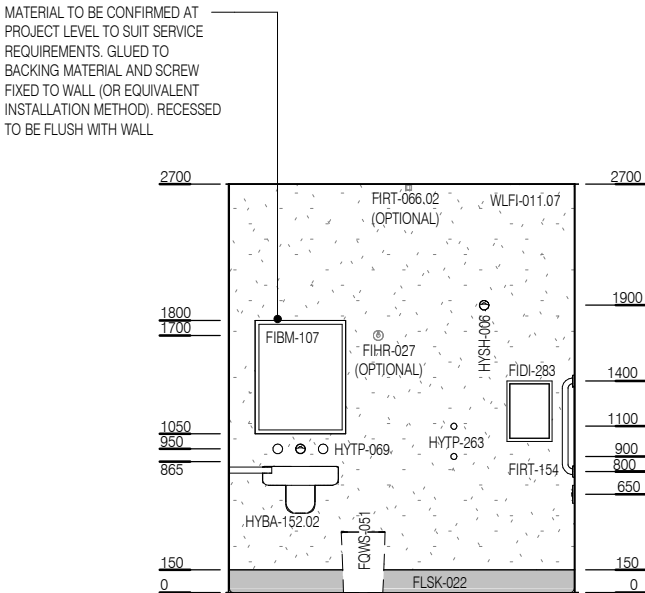
ELEVATION 1



ELEVATION 2



ELEVATION 3



ELEVATION 4