

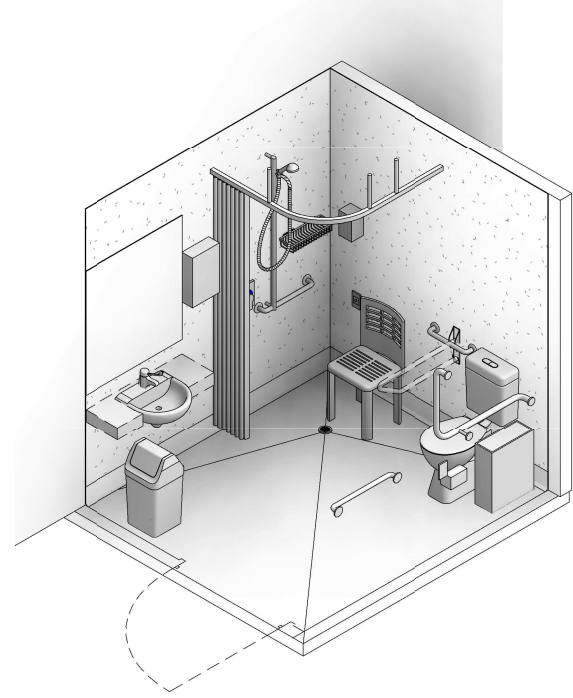
# AUSTRALASIAN HFG STANDARD COMPONENTS

Room Layout Sheet

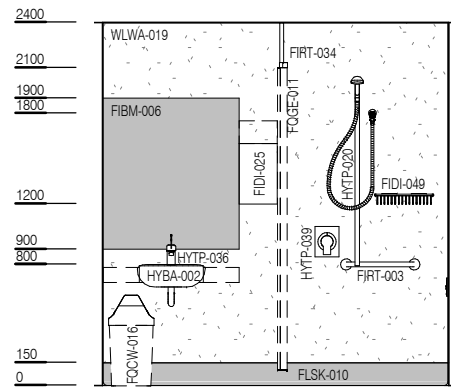
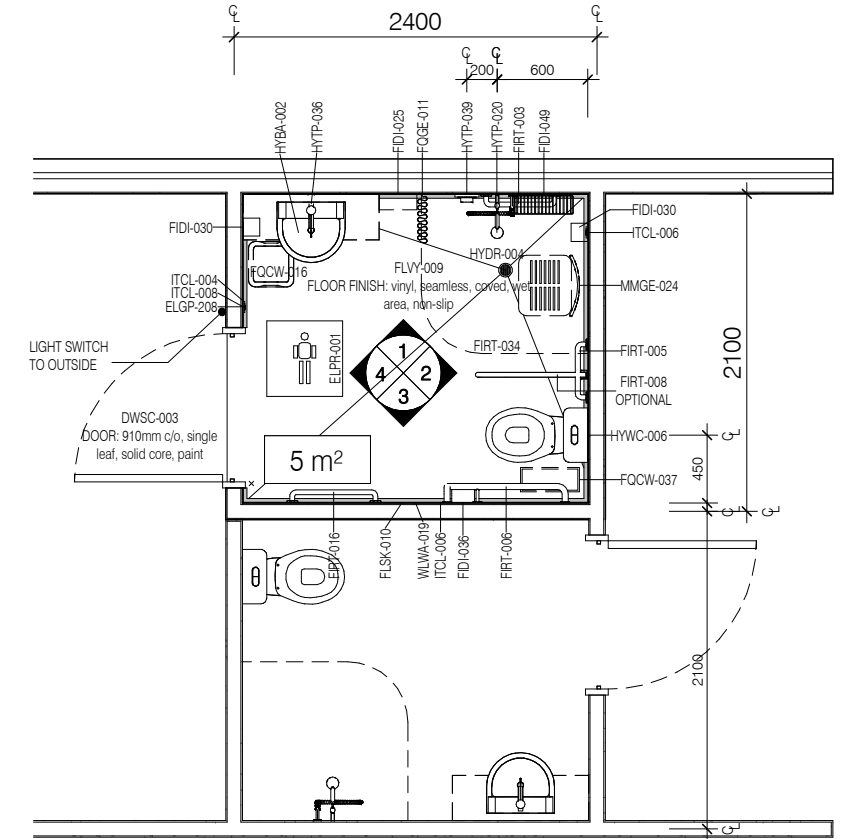
RLS Room Code: **ENS-ST-C**

Room Name:

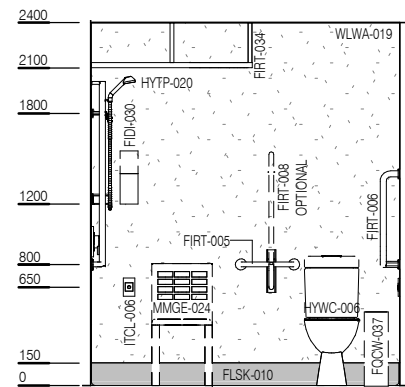
1:50 2.5m 2 1.5 1 0.5 0  
**ENSUITE - BACK TO BACK, 5m<sup>2</sup>**



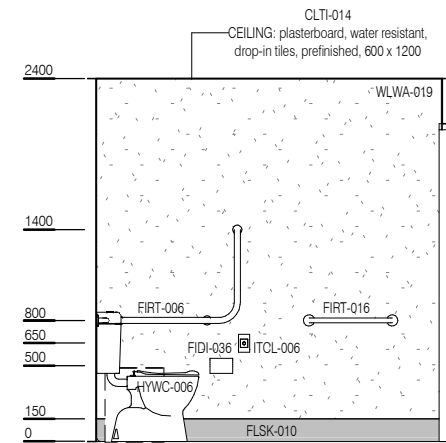
CODE	DESCRIPTION
DWPR-005	DOOR PROTECTION: protection plate to 900 AFFL
ELGP-208	GPO: double, wall mounted
ELPR-001	BODY PROTECTED ELECTRICAL AREA
FIBM-006	MIRROR: fixed, glass
FIDI-025	DISPENSER: paper/hand towel
FIDI-030	DISPENSER: soap
FIDI-036	DISPENSER: toilet paper
FIDI-049	HOLDER: soap/shampoo, non-recessed
FIHR-026	HOOK: coat
FIRT-003	GRAB RAIL: shower, horizontal
FIRT-005	GRAB RAIL: stainless steel
FIRT-006	GRAB RAIL: WC
FIRT-008	GRAB RAIL: WC, hinged
FIRT-016	RAIL: towel
FIRT-034	TRACK: curtain, shower, 90 deg
FLSK-010	SKIRTING: vinyl, floor vinyl coved, 150H, prefinished
FLVY-009	FLOOR FINISH: vinyl, seamless, coved, wet area, non-slip
FQCW-016	BIN: waste, general, 20L
FQCW-037	BIN: waste, sanitary
FQGE-011	CURTAIN: shower
HYBA-002	BASIN: ensuite, with vanity unit
HYDR-004	DRAIN: floor waste
HYTP-020	SHOWER: hand-held
HYTP-036	TAPWARE: mixer, basin, lever action
HYTP-039	TAPWARE: mixer, shower, lever action
HYWC-006	TOILET SUITE: patient
ITCL-004	BUTTON: nurse call, emergency
ITCL-006	BUTTON: nurse call, patient to staff
ITCL-008	BUTTON: nurse call, staff assist
MMGE-024	CHAIR: shower
WLWA-019	WALL FINISH: vinyl, full height



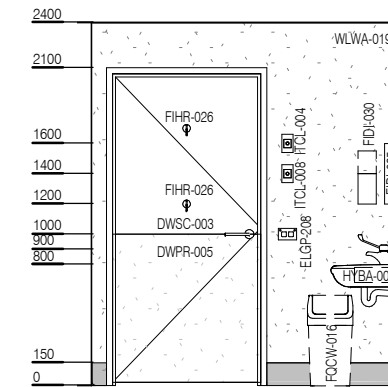
ELEVATION 1



ELEVATION 2



ELEVATION 3



ELEVATION 4

\*NOTE: PLACEMENT OF POWERPOINT TO COMPLY WITH AS 3000