

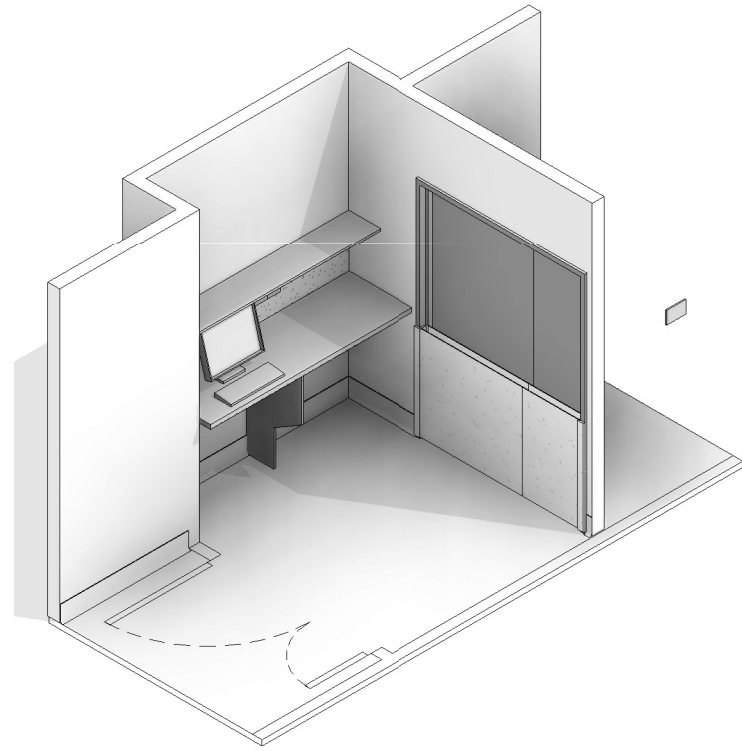
AUSTRALASIAN HFG STANDARD COMPONENTS

Room Layout Sheet

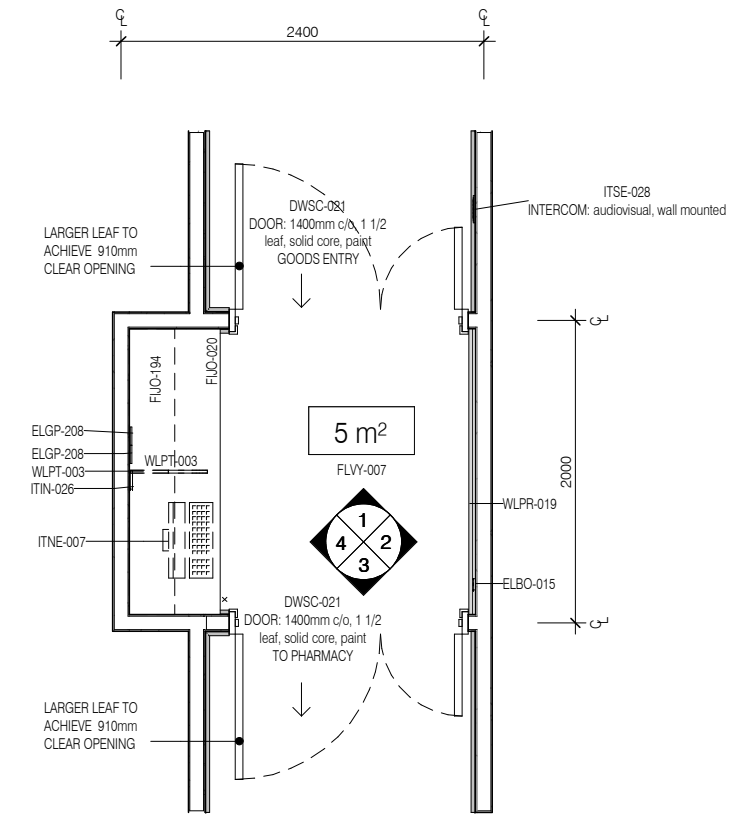
RLS Room Code: **GRE**

Room Name:

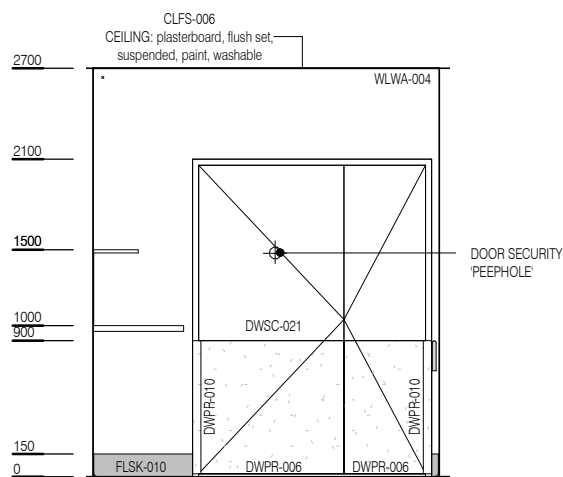
1:50 2.5m 2 1.5 1 0.5 0
GOODS RECEIPT - PHARMACY



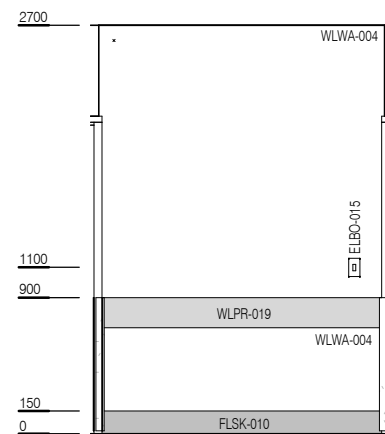
CODE	DESCRIPTION
DWPR-006	DOOR PROTECTION: protection plate, to 900 AFFL, PVC, prefinished
DWPR-010	DOOR PROTECTION: to door frame, PVC, prefinished
ELBO-015	SWITCH: light, single
ELGP-208	GPO: double, wall mounted
FIBM-013	NOTICEBOARD: fixed, fabric covered
FIJO-020	BENCH: 600D, open under, laminate finish
FIJO-194	SHELF: laminate
FLSK-010	SKIRTING: vinyl, floor vinyl coved, 150H, prefinished
FLVY-007	FLOOR FINISH: vinyl, seamless, coved, standard slip resistant
ITIN-026	OUTLET: data, double RJ45, wall mounted
ITNE-007	COMPUTER: desktop, with display screen
WLPR-019	WALL PROTECTION: crash rail, at 900 AFFL, prefinished PVC
WLPT-003	PARTITION: laminate
WLWA-004	WALL FINISH: paint, acrylic, washable



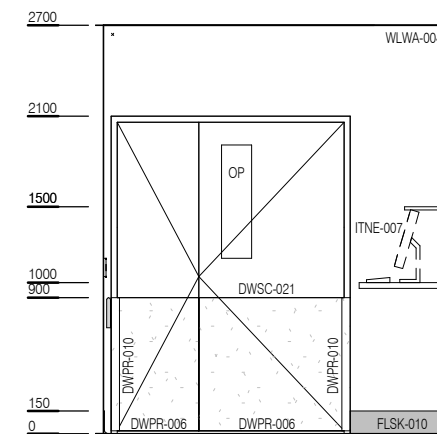
PLAN



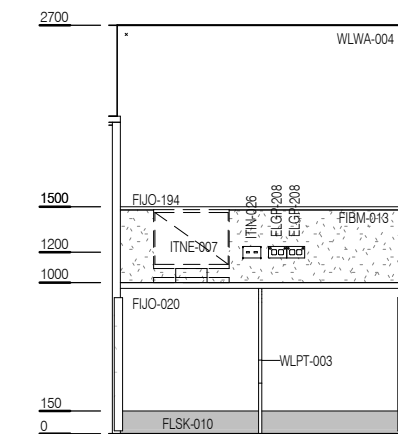
ELEVATION 1



ELEVATION 2



ELEVATION 3



ELEVATION 4



REV	DESCRIPTION	DATE
3	Coding and naming updated	20.03.2017

FOR GUIDANCE

SCALE	RLS Room Code	REV
1 : 50 @ A3	GRE	3